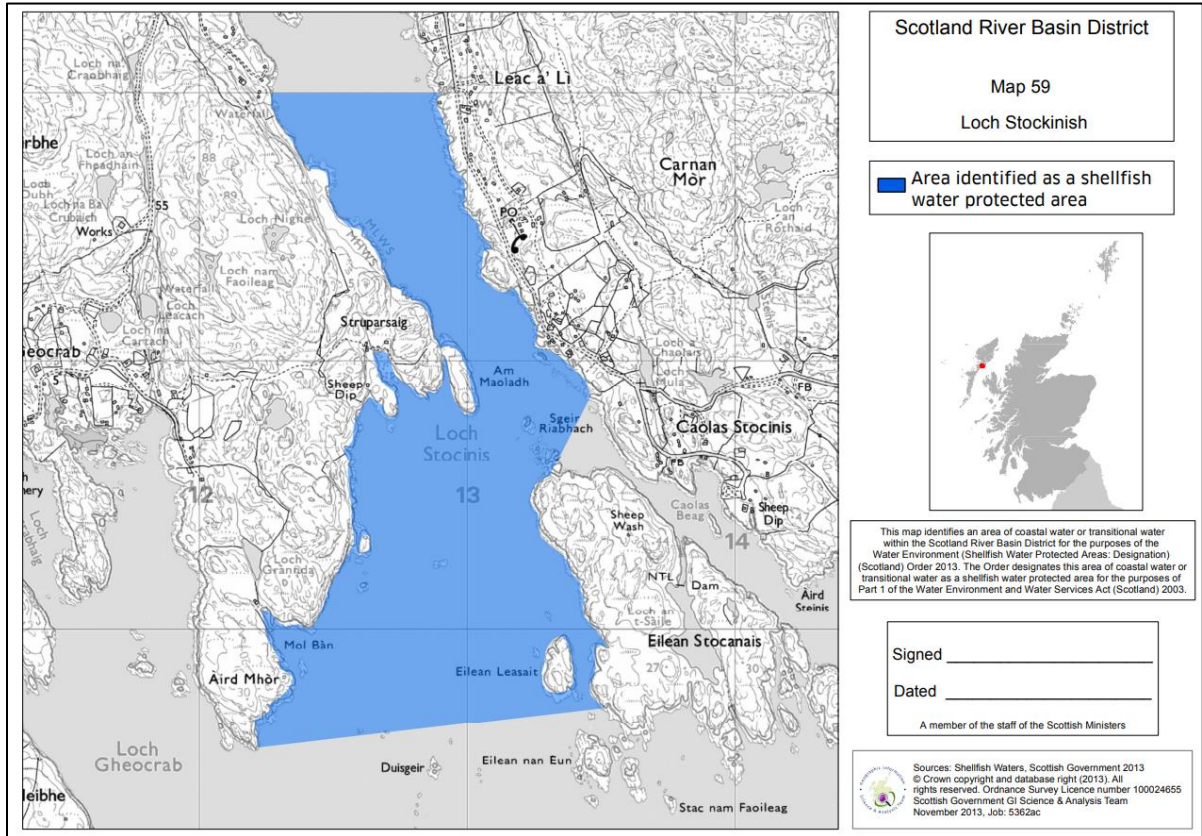


SWPA 59: Loch Stockinish

1. Map of Designated Shellfish Water Protected Area

[Shellfish water protected areas: maps - gov.scot \(www.gov.scot\)](http://www.gov.scot)



2. SWPA Classification History

SWPA Name	Area	2014	2015	2016	2018	2018 REVISED TERMINOLOGY UNDER NEW SHELLFISH FRAMEWORK
Loch Stockinish	SWPA59	Fair	Fair	Good	Good	Excellent

3. Associated Shellfish Production Areas FSS Classification

(Showing Common Mussels, Pacific Oysters and Native Oysters only)

Latest FSS classification can be found here:

[Shellfish safety and sanitation | Food Standards Scotland | Food Standards Scotland](#)

Production Area	Species	2017-2018	2018-2019	2019-2020	2020 - 2021	2021 - 2022
Loch Stockinish	Common mussels	2017= A - April to December 2018= A - January to March	2018= A : April to December 2019= A : January to March	Dormant 2019= A : April to December 2020= A : January to March	Declassified 2020	no classification

Notes on Classification:

SEPA generally uses the same data collected for FSS classification of Production Areas to classify the associated Shellfish Water Protection Area (often using data collected from multiple Production Areas).

Despite this, there can be differences between SWPA classifications and FSS Production Area classifications. This is due to the purpose for each classification and how the data is used: SWPA classification describes the general quality across multiple production areas, characterising the water quality over a greater spatial extent and longer time. By contrast, the FSS classifies the quality of a specific area to determine the seasonal risk and level of pre-market treatment required for periods as short as 3 months.

Although there may be differences due to the aggregation of data and how the data is assessed, the revision of Scottish Government Directions in 2021 helped to better align these classifications, e.g., the E. coli standard required for a “class A” Production Area classification now describes an “Excellent” SWPA classification. This change is a more accurate reflection of the quality of our shellfish waters in Scotland and allows us to target our resources to where they most needed – at industry agreed priority *production areas* failing to consistently achieve Class A.

Where there is no available data (i.e., no active production sites with FSS classification samples) then SEPA will usually not be able to classify the associated SWPA.

4. Production Area Sanitary Surveys

[Scotland - Cefas \(Centre for Environment, Fisheries and Aquaculture Science\)](#)

The sanitary survey provides an overview of pressures from human population, sewage discharges, land cover, farm animals and wildlife.