

## Bathing Water Profile for Kinghorn (Pettycur)

Kinghorn, Scotland

Current water classification <https://www2.sepa.org.uk/BathingWaters/Classifications.aspx>

### Description

The Kinghorn (Pettycur) bathing water is located to the south west of the town of Pettycur in Fife. It is a small sandy bay of about 0.8 km in length which slopes gently towards the water. The beach is popular with walkers.

During high and low tides the approximate distance to the water's edge can vary from 0m to 300m. For local tide information see:

<http://easytide.ukho.gov.uk/EasyTide/index.aspx>



### Site details

Local authority	Fife Council
Year of designation	1987
Water sampling location	NT 26435 86176

### Catchment description

The catchment draining into the Kinghorn (Pettycur) bathing water extends to 0.5 km<sup>2</sup>. The area is mixture of urban (52%) and rural (47%) land use with the rural areas used for horticulture and grassland. The main population centre is the town of Pettycur, located to the south of Kinghorn.

There are no main rivers within the bathing water catchment.

Kinghorn (Pettycur) bathing water is located within the Firth of Forth Ramsar site designated due to its internationally important bird populations.

### Risks to water quality

The principal risks and source of wet weather driven short term pollution at this bathing water arise from combined sewer overflows.

There is a risk that water pollution may occur after heavy rainfall.

**Bathing is not advised during or 1-2 days after heavy rainfall. This is due to the risk to bathers' health from water pollution.**

Our regulatory and scientific assessment indicates that potential sources of short-term faecal indicator pollution at this bathing water can originate from human or animal sources.

Map 1: Kinghorn (Pettycur) bathing water

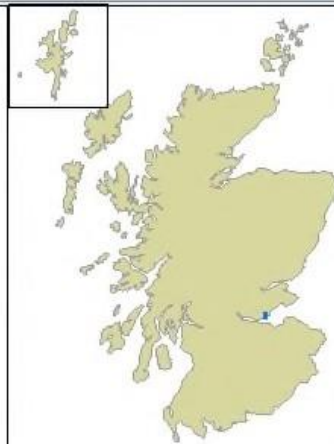


© 2010 Scottish Environment Protection Agency. This map is reproduced from Ordnance Survey material with the permission of Ordnance Survey on behalf of the Controller of Her Majesty's Stationery Office ©Crown Copyright. Any unauthorised reproduction infringes Crown copyright and may lead to prosecution or civil proceedings. SEPA lic. no. 100016991 (2010). Some features of this map are based on digital spatial data licensed from the Centre for Ecology and Hydrology, © CEH.

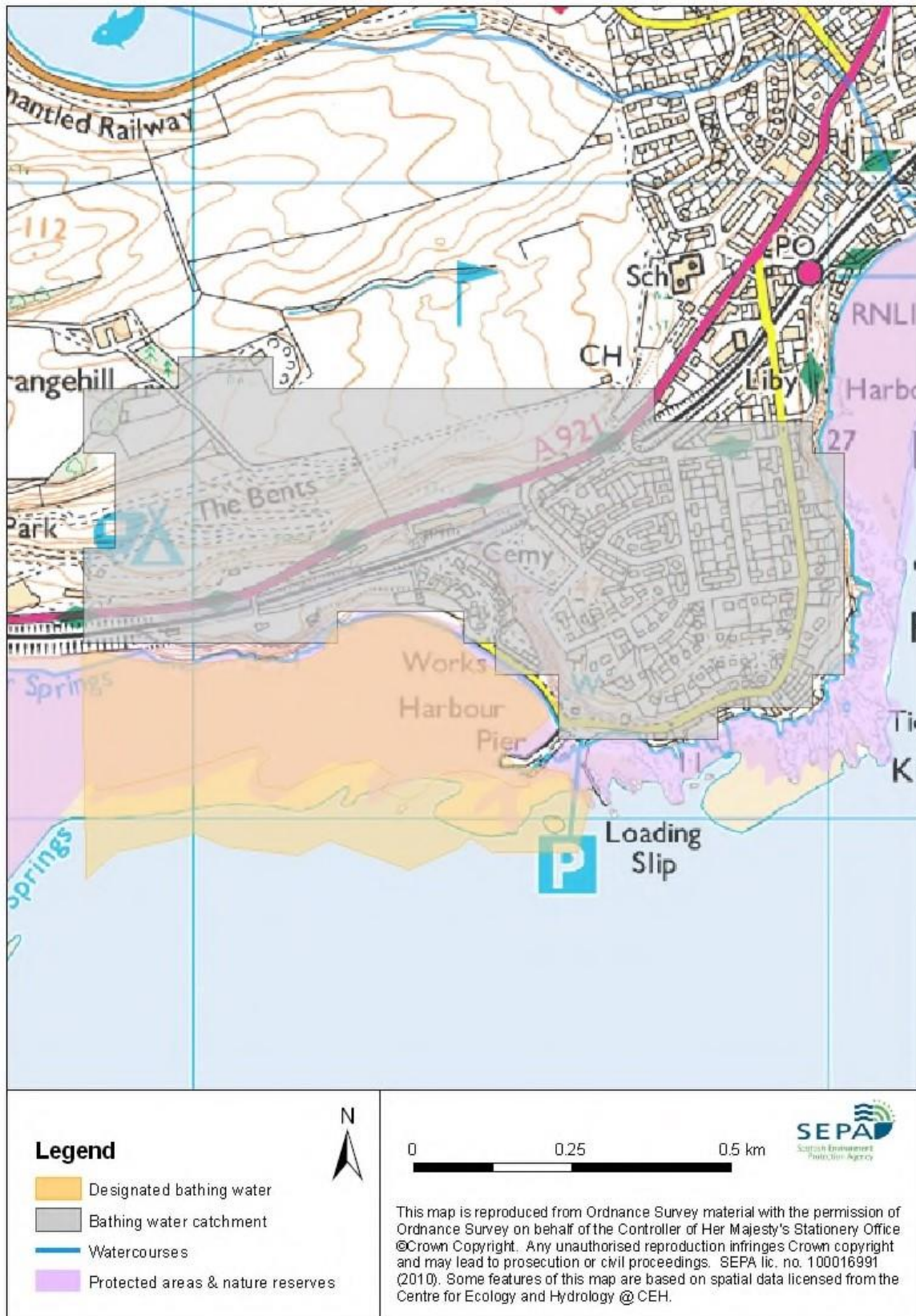


0 100 200 400 m

- Designated bathing water
- Bathing water sampling point
- Bathing water sampling transect
- Sewage effluent discharge
- X Combined sewer overflow
- Sewage pumping station



Map 2: Catchment draining into Kinghorn (Pettycur) bathing water



**Improving bathing water quality**

**Improving pollution from sewage and other discharges**

Scottish Water provides most waste water collection and treatment services in Scotland.

New treatment facilities and a long sea outfall pipe at Pettycur were commissioned in 1993. The scheme was extended to treat and discharge all of the sewage from the Kinghorn area.

**Cyanobacteria (blue-green algae)**

Marine waters are not at risk of cyanobacteria overproduction.

**Algae**

Current information suggests that this bathing water is not at risk of excessive growth of macroalgae (seaweed) or phytoplankton.

**Jellyfish**

There is a possibility of increased numbers of jellyfish in the water during summer months. This is a naturally occurring phenomenon. Most species common to the UK are harmless. The Marine Conservation Society advises to 'look but don't touch'.

**Responding to pollution incidents**

Please use our 24 hour hotline (0800 80 70 60) to report pollution. SEPA will investigate the incident and contact other relevant organisations. That may include Scottish Ministers, Scottish Water, the local authority and the relevant health board. Where necessary, measures will be put in place to resolve the problem.

If beach users or bathers are considered to be at risk, the local authority will warn the public by erecting signs at the bathing water. Information will also be available on our website.

SEPA will investigate whenever our sampling identifies pollution.

Beach users are encouraged to use the bins provided or to take litter home. Beach cleaning and litter clean-up is maintained by Fife Council for this bathing water.

**Contact details and information sources**

<p><b>SEPA Glenrothes office</b>                  Pentland Court                  The Saltire centre                  Glenrothes                  KY6 2DA 01592                  776910  <a href="http://www.sepa.org.uk">www.sepa.org.uk</a></p>	<p><b>Fife Council</b>                  Fife House                  North Street                  Glenrothes                  Fife                  KY7 5LT                  08451 55 00 00  <a href="mailto:fife.council@fife.gov.uk">fife.council@fife.gov.uk</a>  <a href="http://www.fife.gov.uk">www.fife.gov.uk</a></p>	<p><b>Keep Scotland Beautiful</b>                  01786 471333  <a href="mailto:beach@ksbscotland.org.uk">beach@ksbscotland.org.uk</a>  <a href="http://www.keepsotlandbeautiful.org">www.keepsotlandbeautiful.org</a></p>
---	---	---

**Scottish Government**

Victoria Quay, Edinburgh, EH6 6QQ

0131 244 0396

[eqcat@scotland.gsi.gov.uk](mailto:eqcat@scotland.gsi.gov.uk)[www.scotland.gov.uk/Topics/Environment/Water/15561/bathingwaters](http://www.scotland.gov.uk/Topics/Environment/Water/15561/bathingwaters)

<b>Version number:</b>	<b>Date:</b>	<b>Next review due:</b>
1.0	Nov 2010	
1.1	March 2014	
1.2	April 2015	
1.3	April 2020	
1.4	May 2023	