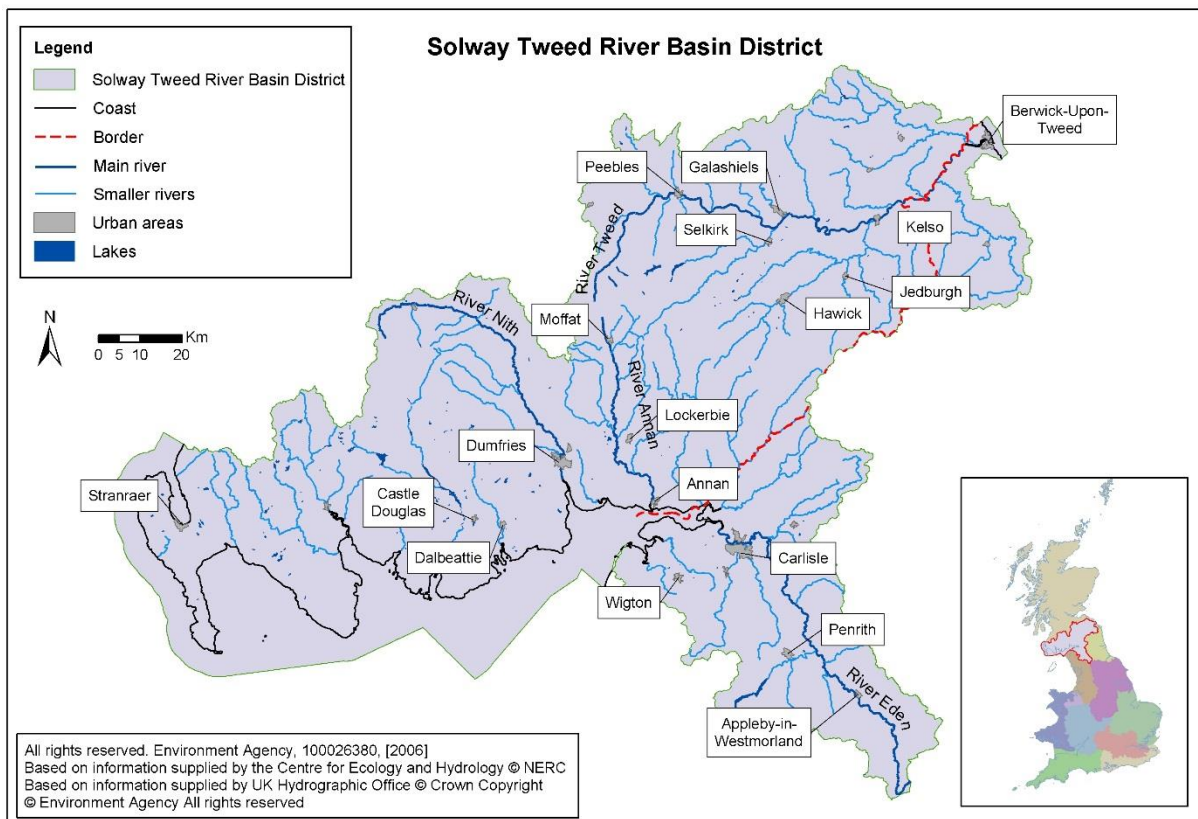


Working Together – Statement of consultation steps for the Solway Tweed river basin district

Introduction

SEPA and the Environment Agency share responsibility for river basin management planning for the Solway Tweed River Basin District. Considerable knowledge and expertise has developed over the previous river basin planning cycles. We are now better able to identify and work jointly with our partners to bring about improvements in catchments and water bodies that are shared between Scotland and England.



This consultation sets out the timetable and arrangements for how we will work with you to review and update the Solway Tweed river basin management plan. Further supporting information on working with partners arrangements in Scotland and England is available in the related documents below:

- Statement of Consultation Steps in Scotland:
<https://consultation.sepa.org.uk/communications/river-basin-management-planning-in-scotland-statem>
- Working Together for each river basin district in England:
<https://www.gov.uk/government/consultations/river-basin-planning-working-together>

Timetable

The proposed timetable for the review and update of the Solway Tweed river basin management plan is:

- 22 June 2018** **Working Together – Statement of consultation steps** – setting out the steps SEPA and Environment Agency will take to consult and engage with stakeholders on the preparation of the updated river basin management plan. The consultation will be open for six months.
- By 22 December 2019** **Significant water management issues report** – setting out the issues that adversely affect the quality of Solway Tweed water environment. These issues will form the basis for new or updated objectives and measures included in the draft update to the river basin management plan. The consultation will be open for six months.
- By 22 December 2020** **Draft River basin management plan** – draft version of the updated river basin management plan. This will be in the form a high level summary supported by interactive online tools, showing all the relevant data and draft objectives per water body. There will also be links to information on measures and on other requirements of the Water Framework Directive. The draft plan will be open for consultation for six months.
- By 22 December 2021** **Third River basin management plan published.**

SEPA and Environment Agency are committed to making information about the Solway Tweed easily and publically available. SEPA will continue to host the Solway Tweed river basin district consultations and reports. However, for the updated river basin management plan, we are proposing to make better use of information and data published in separate national repositories covering the Scotland and England parts of the river basin district respectively.

We will supplement this with information on how we coordinate our work for cross-border catchments and water bodies.

Working together

River basin planning is a continuous process of planning and implementing actions to protect and improve the water environment. Engagement is an integral part of this on-going process. Many of our partner organisations have experience in delivering a catchment approach and will be a crucial part of delivering the aims of the third cycle of river basin planning. We will work with partners at an appropriate scale, either locally or nationally, to make best use of this experience and to ensure that we are using all of our time and expertise wisely.

Consultation Questions

Based on the information provided in this document and supporting information referenced above, please answer the following consultation using the online survey (<https://consultation.sepa.org.uk/communications/working-together-statement-of-consultation-steps-f>).