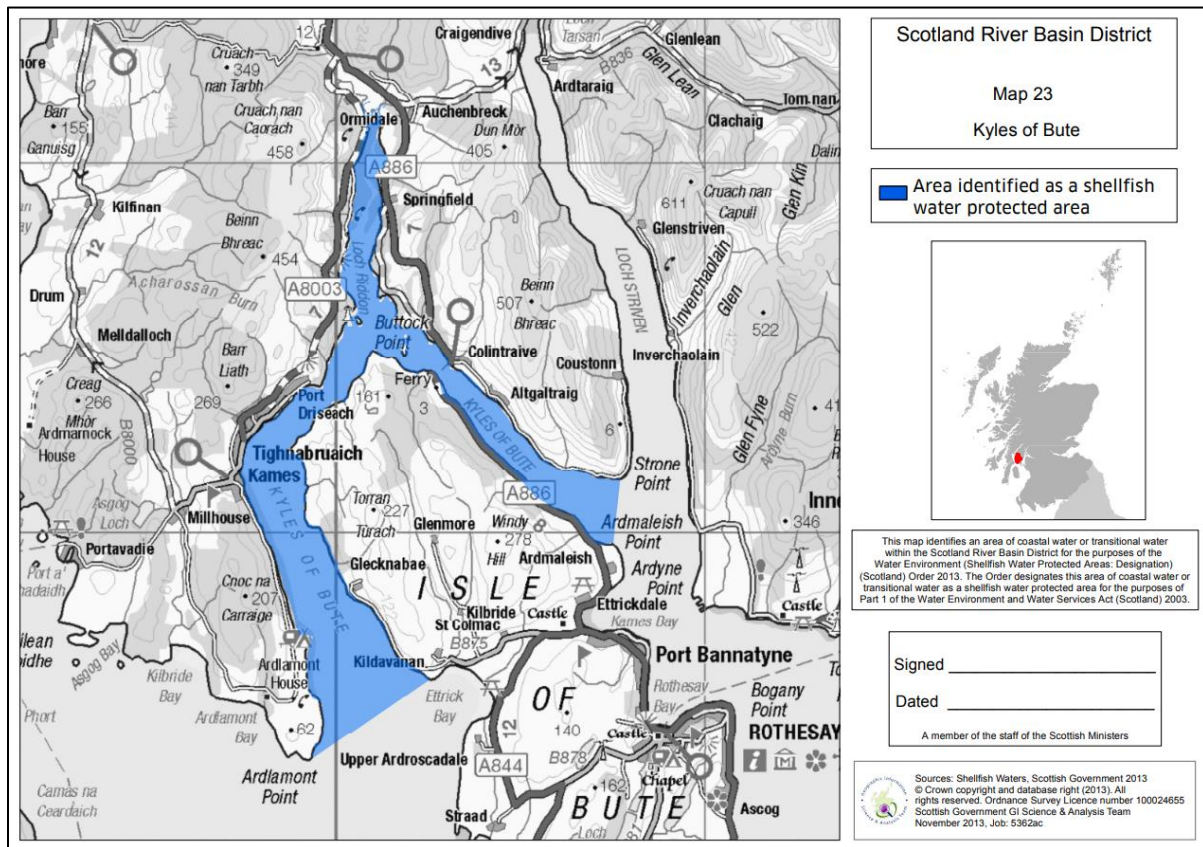


SWPA 23: Kyles of Bute

1. Map of Designated Shellfish Water Protected Area

[Shellfish water protected areas: maps - gov.scot \(www.gov.scot\)](http://www.gov.scot)



2. SWPA Classification History

SWPA Name	Area	2014	2015	2016	2018	2018 REVISED TERMINOLOGY UNDER NEW SHELLFISH FRAMEWORK
Kyles of Bute	SWPA23	Fair	Insufficient	Insufficient	No classification	No classification

3. Associated Shellfish Production Areas FSS Classification

(Showing Common Mussels, Pacific Oysters and Native Oysters only)

Latest FSS classification can be found here:

[Shellfish safety and sanitation | Food Standards Scotland | Food Standards Scotland](#)

No classified mussel or oyster production areas are currently associated with this SWPA

Notes on Classification:

SEPA generally uses the same data collected for FSS classification of Production Areas to classify the associated Shellfish Water Protection Area (often using data collected from multiple Production Areas).

Despite this, there can be differences between SWPA classifications and FSS Production Area classifications. This is due to the purpose for each classification and how the data is used: SWPA classification describes the general quality across multiple production areas, characterising the water quality over a greater spatial extent and longer time. By contrast, the FSS classifies the quality of a specific area to determine the seasonal risk and level of pre-market treatment required for periods as short as 3 months.

Although there may be differences due to the aggregation of data and how the data is assessed, the revision of Scottish Government Directions in 2021 helped to better align these classifications, e.g., the E. coli standard required for a “class A” Production Area classification now describes an “Excellent” SWPA classification. This change is a more accurate reflection of the quality of our shellfish waters in Scotland and allows us to target our resources to where they most needed – at industry agreed priority *production areas* failing to consistently achieve Class A.

Where there is no available data (i.e., no active production sites with FSS classification samples) then SEPA will usually not be able to classify the associated SWPA.

4. Production Area Sanitary Surveys

[Scotland - Cefas \(Centre for Environment, Fisheries and Aquaculture Science\)](#)

The sanitary survey provides an overview of pressures from human population, sewage discharges, land cover, farm animals and wildlife.