

# AQUACULTURE MODELLING SCREENING & RISK IDENTIFICATION REPORT: Loch Carnan (LCAR1)

Version One: January 2022

Every day SEPA works to protect and enhance Scotland's environment, helping communities and businesses thrive within the resources of our planet.

We call this **One Planet Prosperity**



For information on accessing this document in an alternative format or language please either contact SEPA by telephone on 03000 99 66 99 or by email to [equalities@sepa.org.uk](mailto:equalities@sepa.org.uk)

If you are a user of British Sign Language (BSL) the Contact Scotland BSL service gives you access to an online interpreter enabling you to communicate with us using sign language.

<http://contactscotland-bsl.org/> [www.sepa.org.uk](http://www.sepa.org.uk)

03000 99 66 99

Strathallan House, Castle Business Park, Stirling, FK9 4TZ

## Scope of report

As part of the SEPA Aquaculture Regulatory Framework it is recommended that a proposed application for a marine fin fish aquaculture site should undergo a Screening Modelling and Risk Identification process. SEPA carries out this work and this is described on the SEPA aquaculture website Pre-application section:

(<https://www.sepa.org.uk/regulations/water/aquaculture/pre-application/>)

This report presents information arising from that process. Screening modelling methods are outlined and maps and tables describing the modelled impacts are shown. Risks arising from consideration of the model output are listed. Conclusions and recommendations are made regarding the proposed site.

## Executive summary

SEPA has received a proposal for a new marine fin fish aquaculture site called Loch Carnan (LCAR1). The site is located to the North of the Isle of Gasaidh, at location: 084708 843928 (Easting, Northing). The proposed weight of fish to be farmed is 1467t.

Following screening modelling and risk identification we have concluded the following:

- It is possible that discharges from Loch Carnan (LCAR1) will be able to comply with the relevant aspects of the SEPA Aquaculture Regulatory Framework.
- Features at risk, identified at this stage, do not appear to influence the feasibility of the proposed site with respect to the regulatory framework.
- Loch Carnan (LCAR1) is suitable to progress to the next stage of the pre-application process outlined on the SEPA website.
- Contextual site information suggests Loch Carnan (LCAR1) may be able to comply with mixing zone standards. NewDepomod modelling should be undertaken for the proposed site. It is strongly recommended that default NewDepomod modelling is undertaken prior to any marine modelling, to ensure the proposed biomass can be supported.

## List of abbreviations

SEPA      Scottish Environment Protection Agency

## List of chemical abbreviations

AZA      Azamethiphos

---

## Contents

<b>1 Introduction .....</b>	<b>8</b>
1.1 The objectives of screening modelling and risk identification .....	8
1.2 Screening modelling methods .....	9
<b>2 Screening modelling .....</b>	<b>12</b>
2.1 Site proposal .....	12
2.2 Dispersion and erosion capacity maps .....	12
2.3 Sediment influence maps and analysis .....	13
2.4 Bath medicine influence maps and analysis .....	15
<b>3 Risk Identification .....</b>	<b>24</b>
3.1 Identified features which require attention .....	24
3.2 Additional comments on identified features .....	24
3.3 Risks identified from contextual site data .....	25
<b>4 Conclusions of screening modelling and risk identification</b>	<b>26</b>
4.1 Conclusions .....	26
4.2 Recommendations .....	27
<b>5 References .....</b>	<b>28</b>

## List of Figures

Figure 1: East Coast, Lewis and Harris model grid.....	11
Figure 2: Modelled average water speed (metres per second – m/s) in the sea area surrounding the proposed site (Loch Carnan (LCAR1)). .....	18
Figure 3: Modelled percentage of time the water flow speed is above 0.095 m/s in the sea area surrounding the proposed site (Loch Carnan (LCAR1)). .....	19
Figure 4: Modelled average sediment intensity over one month for the proposed site only (Loch Carnan (LCAR1)).....	20
Figure 5: Modelled average sediment intensity over one month for the proposed site (Loch Carnan (LCAR1)) and other relevant sites. ....	21
Figure 6: Modelled average Azamethiphos concentration over four days from neap tide release for the proposed site only (Loch Carnan (LCAR1))......	22
Figure 7: Modelled average Azamethiphos concentration over four days from neap tide release for the proposed site (Loch Carnan (LCAR1)) and other relevant sites. ....	23

## List of Tables

Table 1: Sediment influence information for each site. ....	15
Table 2: Azamethiphos influence information for each site. ....	17
Table 3: Table of identified features .....	24
Table 4: Table of licenced biomass from farms identified as likely to add to cumulative risks. .....	25

# 1 Introduction

Screening Modelling and Risk Identification are important steps in the SEPA regulatory framework for marine pen fish farms. They are carried out by SEPA at the pre-application stage, which is described in detail at:

<https://www.sepa.org.uk/regulations/water/aquaculture/pre-application/>.

This document briefly describes the objectives of screening and risk identification and summarises the methods used. Screening output for the proposed site is then presented with comments. Risks identified from the screening output are detailed. Conclusions and recommendations about the suitability of the proposed site are then made.

## 1.1 The objectives of screening modelling and risk identification

A summary of the modelling methods employed during screening modelling is outlined in section 1.2. The objectives of screening modelling and risk identification are outlined below.

### 1.1.1 Screening modelling

Marine Modelling technology can be used to simulate and predict the potential influence of discharges on the marine environment. SEPA will require the majority of proposed farms to conduct detailed marine modelling, as outlined in our Aquaculture Modelling guidance [1] and on the SEPA Website.

Marine modelling can also be used at an earlier stage to provide an initial estimate of the influence of material discharged from a proposed site.

SEPA will carry out marine modelling at the screening and risk identification stage. This is a simplified version of the detailed modelling required of the applicant. However, it will be sufficient to perform an initial risk assessment of a proposal. Screening marine modelling will also include discharges from other relevant aquaculture sites and major sources.

The objectives of the simplified screening modelling are to:

- Produce maps of the predicted dispersive and erosive capacity of the sea areas in the vicinity of aquaculture sites
- Produce maps of the predicted spread of sediment discharged from aquaculture sites
- Produce maps of the predicted spread of bath treatment medicines from aquaculture sites
- Present an analysis of the potential influence of sediment and bath treatment discharges from the proposed site alongside existing sites within the surrounding sea area



- Present information on the sensitive features and sites of interest within the surrounding sea area, which must be addressed during pre-application work
- Present a summary of the suitability of the proposal with respect to the dispersal of waste and how this may be modelled.

### 1.1.2 Risk identification

Maps and analysis of screening output will be compared to information relating to sensitive features and relevant areas of interest. These may include:

- Marine Protected Area (MPA)
- Special Area of Conservation (SAC)
- Priority Marine Feature (PMF)
- Any site identified via consideration of other permitted or regulatory activities.

SEPA Staff will meet to discuss screening model output and the relevant sensitive features information. Following this meeting, a list of identified risks will be added to this report.

### 1.1.3 Conclusion of screening modelling and risk identification

Following the identification of risks, SEPA will present a summary of the suitability of the proposal with respect to the:

- Dispersal of waste from the proposed site and other sources
- Risks posed to sensitive features
- Likely level of modelling that will be required to address the risks identified.

## 1.2 Screening modelling methods

Marine models divide the sea up into a “grid” of boxes or triangles (often called cells). Each of these is given a water depth. For the screening modelling presented in this report the Marine Scotland “East Coast, Lewis and Harris” (ECLH) has been used. An image of the ECLH model grid is shown in Figure 1. This grid has been set up within a marine modelling software package called MIKE 21 which is manufactured by the company DHI A/S (<https://www.dhigroup.com/>).

Marine models carry out calculations across a grid to work out how seawater moves and mixes in response to tidal and weather forces. Marine models can also be used to simulate how seawater moves and mixes due to salinity and temperature differences across an area, particularly in response to inputs of freshwater from rivers. For pollutant influence assessments the mixing (dispersion) of dissolved (bath medicine) and particulate (sediment) pollutants can also be estimated. Calculations within a marine model can be performed in three dimensions (3D), where the grid is split into layers to better represent how properties of the sea change with depth. Two dimensional (2D) models can also be created where processes over the water depth are simplified. The amount of mixing in a marine model can be varied using settings in the software.

Screening modelling is currently carried out with 2D models using average mixing settings in the model software. In many areas, this approach will be sufficient to make an initial estimate of the influence of a proposed site. Our screening assessment will take into account factors which may limit a 2D approach. We will also consider whether a particular location is adequately represented by the available models.

### 1.2.1 Water movement and mixing modelling

Water movement and mixing modelling (hydrodynamics) has been carried out to generate one month of results. The boundaries (edge(s) of) the model have been driven using the “wider domain” Scottish Shelf Model [2]. Wind forces and freshwater inputs have been applied to the model from the same source. The results generated are an estimate of the average water movement and mixing conditions within the model area.

### 1.2.2 Sediment waste modelling

Screening modelling provides a precautionary and **indicative** estimate of the size, location and intensity of waste organic material released from aquaculture sites.

The release of sediment from sources within the model area is simulated using one month of hydrodynamic results along with particle tracking modelling technology. Virtual particles are continually introduced to the model grid to represent the potential dispersion of sediment from the sources. Particles in the model are moved and mixed by the hydrodynamics. Additionally, particles are assigned simplified properties, which allow them to settle through the water and be re-suspended (eroded and lifted) from the sea bed.

### 1.2.3 Bath medicine modelling

Screening modelling provides a precautionary and **indicative** estimate of the size, location and concentration of bath medicine releases.

The release of bath treatment medicine from sources within the model area is simulated using hydrodynamic results along with particle tracking modelling technology. Virtual particles are introduced to the model grid to represent the potential dispersion of bath medicines from the sources. Particles in the model are moved and mixed by the hydrodynamics. Releases of bath medicines are simulated under worst case mixing (dispersion) conditions, which occur under neap tides. The maximum treatment amount likely to be used at each site is released into the model at the same time and plumes are tracked over the following 96 hours (4 days). Treatment amounts used at screening have been derived from an analysis of historical data. Additionally, all bath medicine particles are concentrated within the top 5 m of the sea area. As all bath medicines are likely to disperse in a similar way, only Azamethiphos (AZA) has been modelled at the screening stage.

### 1.2.4 Nutrient assessment

Whilst nutrients are not directly modelled during screening, the dispersion of bath medicine releases will give an indication of the likely level of nutrient dispersion. This will be considered alongside any pre-existing nutrient assessment information that may be available.

### 1.2.5 Analysis of modelling output

SEPA processes the screening modelling output and places it into a standard analysis application built in TIBCO Spotfire. The application allows for the production of standard maps and tables, which are presented below.

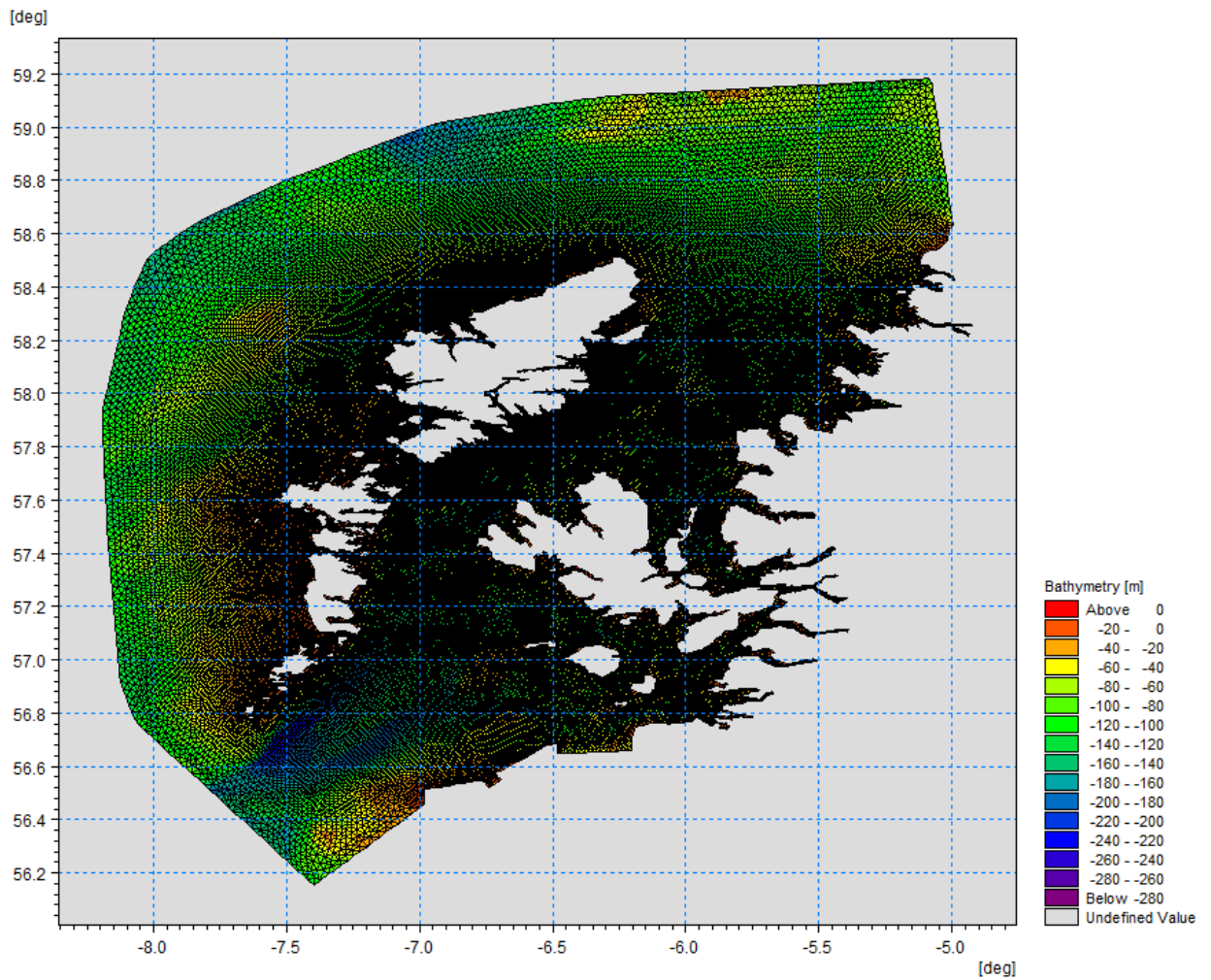


Figure 1: East Coast, Lewis and Harris model grid

## 2 Screening modelling

### 2.1 Site proposal

Screening modelling has been carried out for a proposal for a new farm: Loch Carnan (LCAR1). The proposal is to site the farm at location: 084708 843928 (Easting, Northing). The proposed weight of fish to be farmed is 1467t. For the screening modelling presented here all relevant licenced sites and current applications have been modelled in conjunction with the proposed site.

#### 2.1.1 Accuracy of model in the area surrounding the proposal

The East Coast, Lewis and Harris model used for screening modelling has a relatively low resolution in this area. Comparison against various sources of observed current meter data indicates that the model provides a moderate description of the physical processes in the vicinity of the proposed site.

### 2.2 Dispersion and erosion capacity maps

Modelled water movement in a sea area can be analysed and presented to show the capacity of the water to move and disperse discharged substances. It is also possible to show the capacity available to erode substances from the seabed. This information is a useful guide to the potential size of a marine fin fish aquaculture farm at a particular location.

Marine fin fish aquaculture farms using open-net pens will benefit from operating in locations where there are strong, repeating, water currents to erode and disperse waste.

For the purposes of screening we consider locations which meet the following water flow criteria to be generally suitable for larger farms:

Locations with average water flow speeds of greater than, or equal to, 0.12 metres per second (0.23 knots)

Locations where water flow speeds are often above the threshold of 0.095 meters per second (0.18 knots).

Locations with these properties are likely to disperse discharged material rapidly, and regularly erode sediment discharged to the seabed. In general, we would look for these properties to be maintained over a large area around a proposed site.

The thresholds stated above are indicative.

A map of modelled average water flow speed for the area surrounding the proposed site is shown in Figure 2. The average water flow speed in each cell of the model grid (see section 1.2) has been assigned a shade. The key for the shading is shown in the top left of the figure. Grid cells that have average speeds less than 0.12 m/s (metres per second) are marked on the figure. The greater the shading, the slower the average current speed and the lower the capacity for dispersion.

Figure 3 is a map of the percentage of time the modelled water flow speed in a grid cell is above 0.095 m/s (metres per second). The greater the shading, the lower the capacity for material to be eroded from the seabed.

Licensed aquaculture farms in the vicinity of the proposed site are also marked on Figure 2 and Figure 3. Discharges of material from these sites have been included in the screening modelling.

Based on the maps of the modelled water flow properties we can make the following observations about the proposed site location:

- It lies in a moderate dispersion area.
- It lies in an area where water flow has a relatively low capacity to erode material on the seabed.

## 2.3 Sediment influence maps and analysis

Modelled particles in a sea area can be analysed for each modelled grid cell and presented to show the potential influence of discharged sediment on the surrounding sea area.

### 2.3.1

Figure 4 shows a map of the modelled average sediment intensity over one month (time average) for the proposed site only. Grid cells within the model that are influenced by modelled sediment are shaded according to the intensity of the influence in grams per square metre ( $\text{g}/\text{m}^2$ ).

Values less than  $1 \text{ g}/\text{m}^2$  have been excluded from the map and subsequent calculations. These low concentration cells are produced by the particle tracking approach but they are not considered to be representative of the main influence of a discharge.

The shading key is shown in the top left of the figure. Cells which are shaded black are similar to the average intensity in the total area of influence shown in the map. Cells shaded pink are similar to the median (middle value in the range) intensity value shown on the map. White shaded cells are similar to the minimum intensity value shown on the map.

- The average and median sediment intensity over the area of influence is  $10.22 \text{ g}/\text{m}^2$  and  $2.82 \text{ g}/\text{m}^2$  respectively.

- A small number of cells influenced by the proposed site appear to lie close to other modelled farm sites.

Figure 5 shows a map of the modelled average sediment intensity over one month for the proposed site and other relevant sites. Grid cells within the model that are influenced by modelled sediment are shaded according to the intensity of the influence in grams per square metre (g/m<sup>2</sup>). The shading key is shown in the top left of the figure and is in a similar format as that shown in Figure 4. The average sediment intensity, after including all relevant sites, is decreased, but the median is increased.

- The average and median sediment intensity over the area of influence is 8.13 g/m<sup>2</sup> and 3.16 g/m<sup>2</sup> respectively.
- A small number of cells influenced by other modelled sites appear to lie close to the proposed site.

### 2.3.2 Sediment influence analysis

Model grid cells can be analysed to estimate the size and concentration of the potential sediment influence from the modelled sites.

- The total area of sediment influenced by the nine sites modelled is estimated to be 4.29 square kilometres (km<sup>2</sup>).
- As shown in Figure 5, the average and median intensity over this area is 8.13 and 3.16 g/m<sup>2</sup> respectively.
- The total weight of fish that generates this modelled influence is 5665.5 tonnes.

Table 1 shows the information for each individual site modelled. It is important to note that the total area of influence for all sites is not the sum of the numbers in Table 1. The total area of influence worked out above takes into account that the individual areas of influence from different sites will overlap.

Table 1: Sediment influence information for each site.

Site Name	Average Intensity (g/m <sup>2</sup> )	Area of Influence (km <sup>2</sup> )	Median Intensity (g/m <sup>2</sup> )	Max weight Of Fish (tonnes)
LCAR1	10.22	1.22	2.82	1467
HMR1	7.48	0.64	2.34	473.5
HOL2	1.40	0.35	1.41	311
ILC1	7.59	0.71	8.32	410
KIL1	Less than 1	0	Less than 1	450
PPN1	Less than 1	0	Less than 1	654
SAN1	11.84	0.40	12.58	500
SFE1	3.35	1.42	2.49	800
SFOR1	2.71	0.84	1.57	600

There are no Environmental Standards for sediment intensity. However, we consider that:

- underneath farm pens, an intensity of 2000 g/m<sup>2</sup> or less is likely to lead to an acceptable sea bed ecological outcome
- at the edge of the mixing zone, an intensity of 250 g/m<sup>2</sup> or less is likely to lead to an acceptable sea bed mixing zone outcome

The estimate of influence detailed above is indicative. The values presented are lower than the sediment intensity values given above. However, we recognise that low sediment concentrations may be useful for the identification of risks.

## 2.4 Bath medicine influence maps and analysis

Modelled particles in a sea area can be analysed for each modelled grid cell and presented to show the potential influence of discharged bath medicine on the surrounding sea area. Results presented are for the AZA medicine (see section 1.2.3).

### 2.4.1

Figure 6 shows a map of the modelled average AZA concentration over four days for the proposed site only. Grid cells within the model which experience an AZA influence are shaded according to the concentration of AZA in nanograms per litre (ng/l).

Values less than 10 ng/l have been excluded from the map and subsequent calculations. These low concentration cells are produced by the particle tracking approach but they are not considered to be representative of the main influence of a discharge.

Please note that the Environmental Standard for Azamethiphos with the lowest concentration is 40 ng/l. This must be met 72 hours after the material has been discharged. The estimate of influence detailed here is precautionary. In the information presented below areas of influence above 40 ng/l have been quoted. However the average and median concentrations are quoted for the entire area of influence above 10 ng/l.

The shading key is shown in the top left of the figure. Cells which are shaded black are similar to the average concentration in the total area of influence shown in the map. Cells shaded pink are similar to the median (middle value in the range) concentration shown on the map. White shaded cells are similar to the minimum concentration value shown on the map.

- The average and median concentration over the total area of influence is 22.65 ng/l and 19.97 ng/l respectively.
- A small number of cells influenced by the proposed site appear to lie close to other modelled farm sites.

Figure 7 shows a map of the modelled average AZA influence over four days for the proposed site and other relevant sites. The average AZA influence, after including all relevant sites, is increased.

- The average and median AZA concentration over the total area of influence is 30.24 ng/l and 18.40 ng/l respectively.
- A small number of cells influenced by other modelled sites appear to lie close to the proposed site.

#### 2.4.2 Bath medicine influence analysis

Model grid cells can be analysed to estimate the size and concentration of the potential AZA influence from the modelled sites.

- The area of AZA influenced above 40 ng/l from all sites modelled is estimated to be 1.50 square kilometres (km<sup>2</sup>).
- As shown in Figure 7, the average and median concentration over the total area of influence is 30.24 and 18.40 ng/l respectively.
- The total weight of fish that generates this modelled influence is 5665.5 tonnes.

Table 2 shows the information for each individual site modelled. It is important to note that the total area of influence above 40ng/l for all sites quoted above is not the sum of the numbers



in Table 2. The total area of influence worked out above takes into account that the individual areas of influence above 40 ng/l from different sites will overlap.

Table 2: Azamethiphos influence information for each site.

Site Name	Average Conc. (ng/l)	Area of Influence Above 40 ng/l (km <sup>2</sup> )	Median Conc. (ng/l)	Weight Of Fish (tonnes)
LCAR1	22.65	0.17	19.97	1467
HMR1	Less than 10	0	Less than 10	473.5
HOL2	14.67	0	13.69	311
ILC1	77.33	0.90	54.10	410
KIL1	23.89	0	22.09	450
PPN1	Less than 10	0	Less than 10	654
SAN1	17.34	0.23	12.39	500
SFE1	14.67	0	13.95	800
SFOR1	25.05	0.19	25.15	600

Please note that the Environmental Standard for Azamethiphos with the lowest concentration is 40 ng/l. This must be met 72 hours after the material has been discharged. The estimate of influence detailed above is precautionary. The values presented are close to the 40 ng/l standard. Detailed modelling will be required to demonstrate compliance with all Environmental Standards.

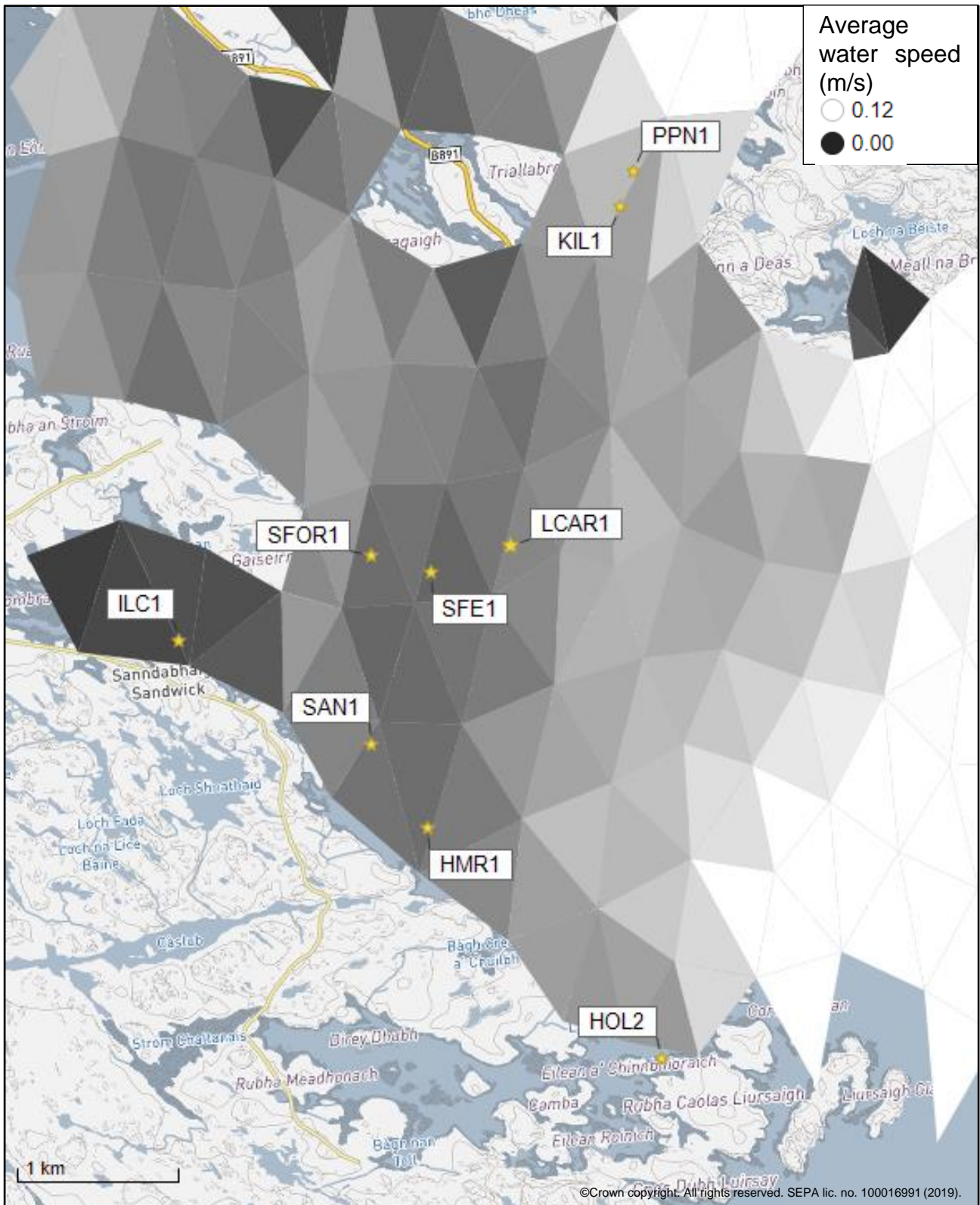


Figure 2: Modelled average water speed (metres per second – m/s) in the sea area surrounding the proposed site (Loch Carnan (LCAR1)).

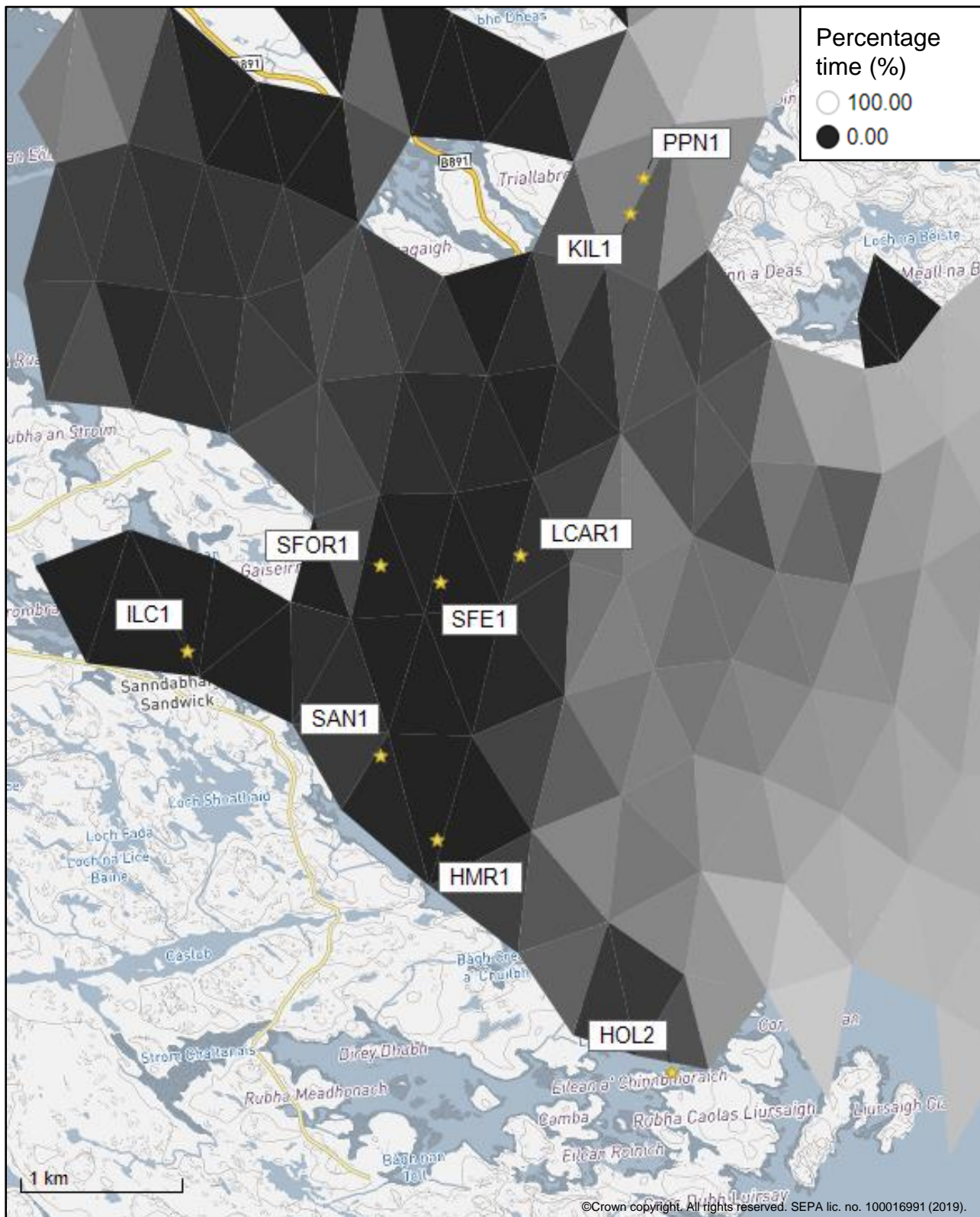


Figure 3: Modelled percentage of time the water flow speed is above 0.095 m/s in the sea area surrounding the proposed site (Loch Carnan (LCAR1)).

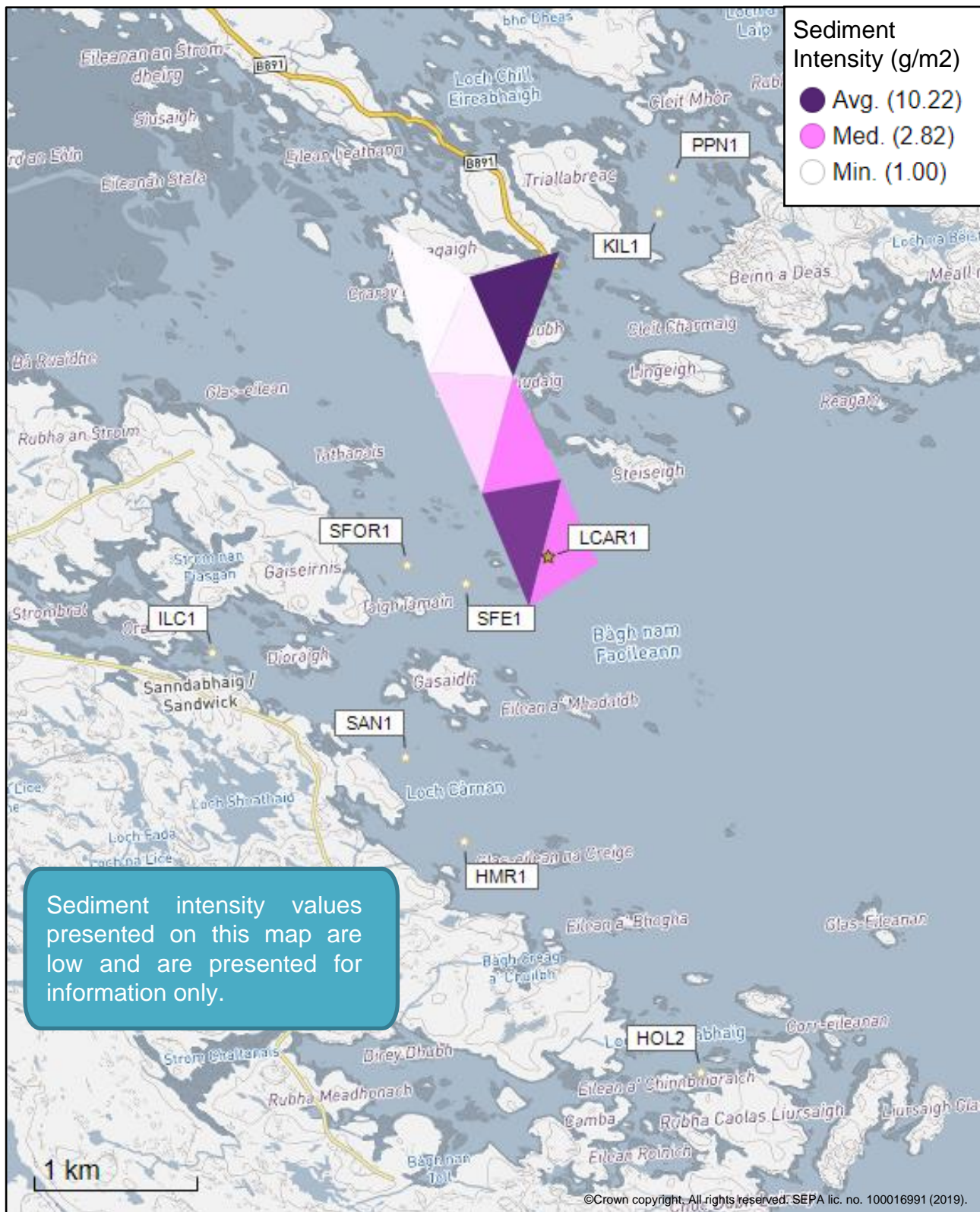


Figure 4: Modelled average sediment intensity over one month for the proposed site only (Loch Carnan (LCAR1)).

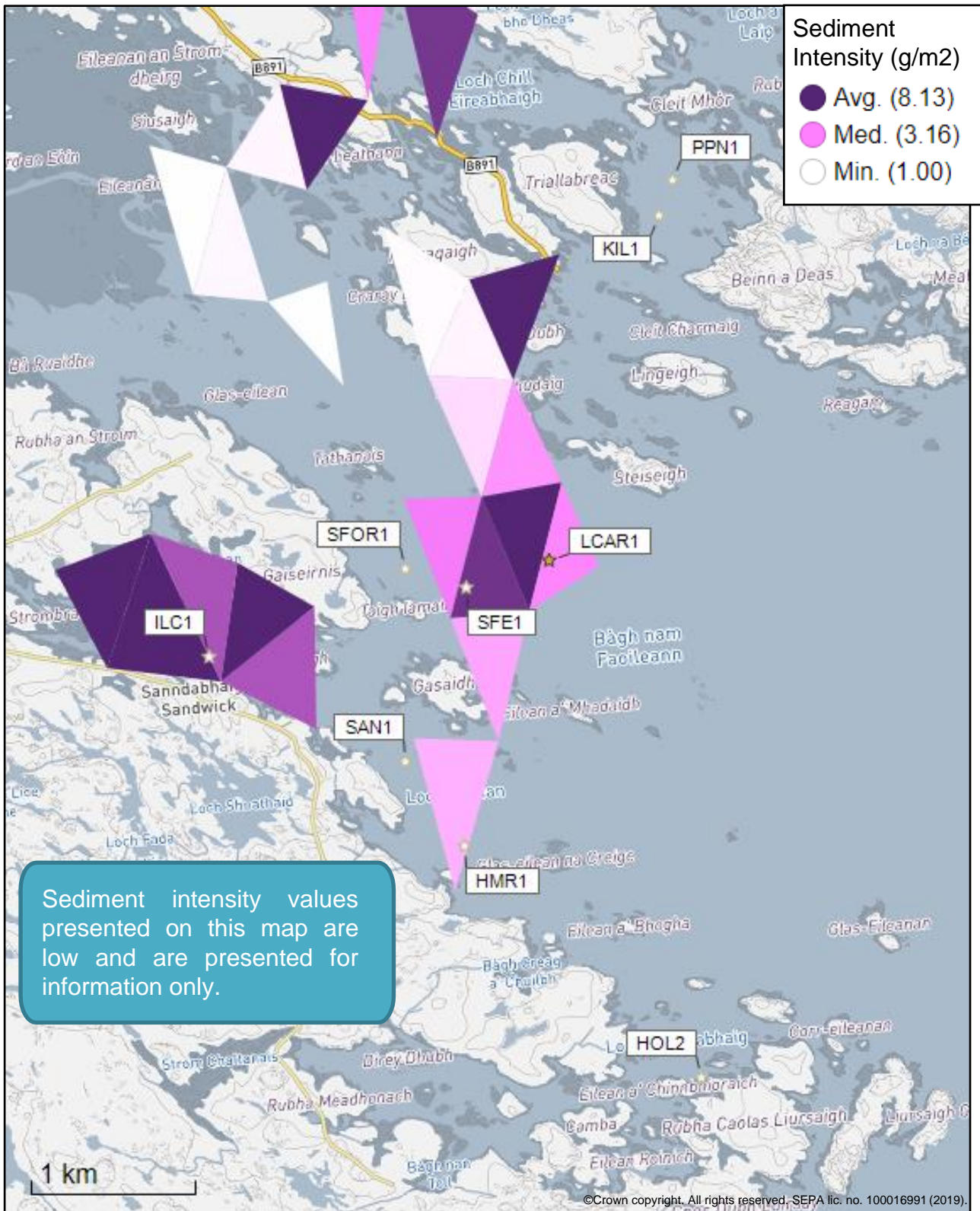


Figure 5: Modelled average sediment intensity over one month for the proposed site (Loch Carnan (LCAR1)) and other relevant sites.

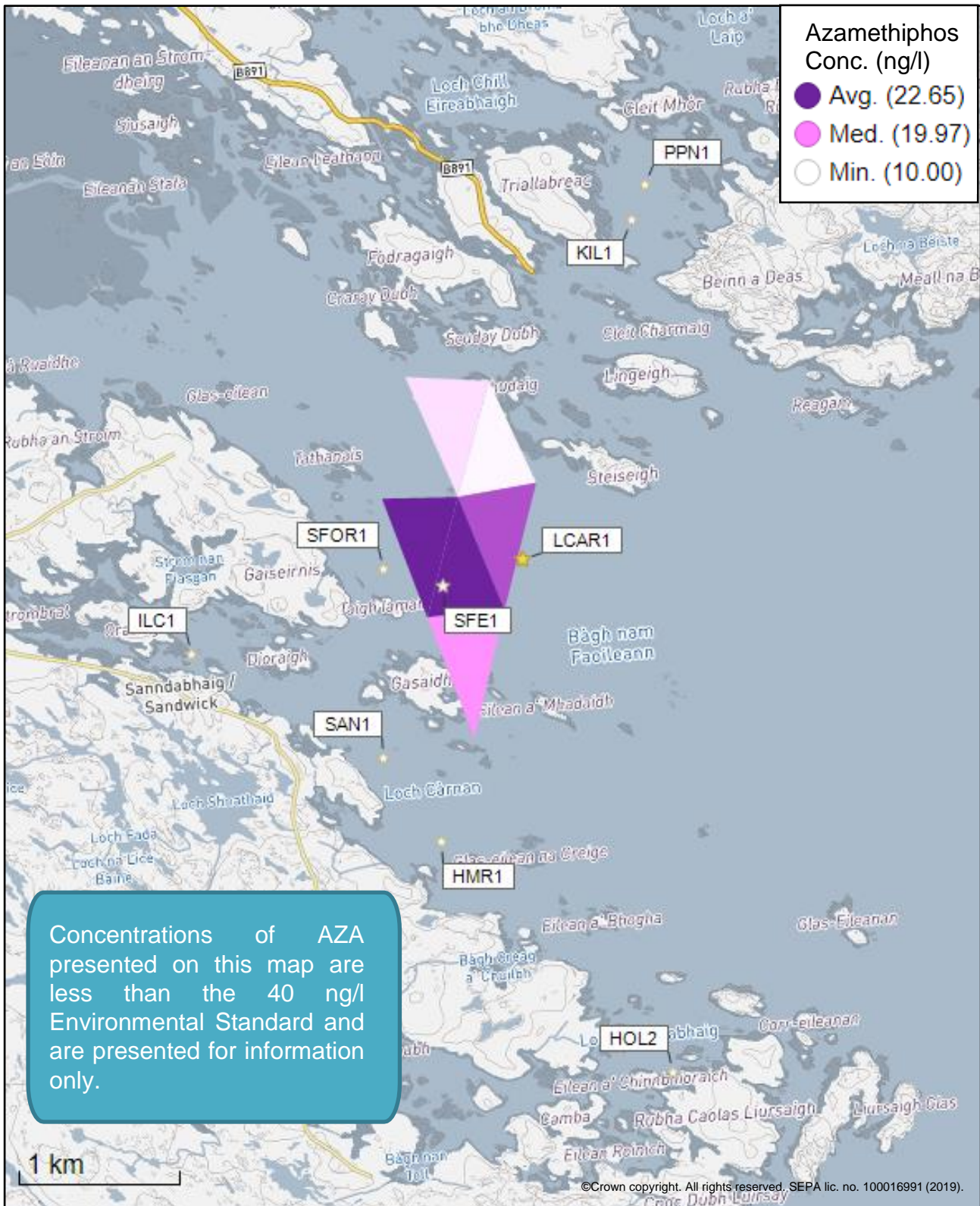


Figure 6: Modelled average Azamethiphos concentration over four days from neap tide release for the proposed site only (Loch Carnan (LCAR1)).

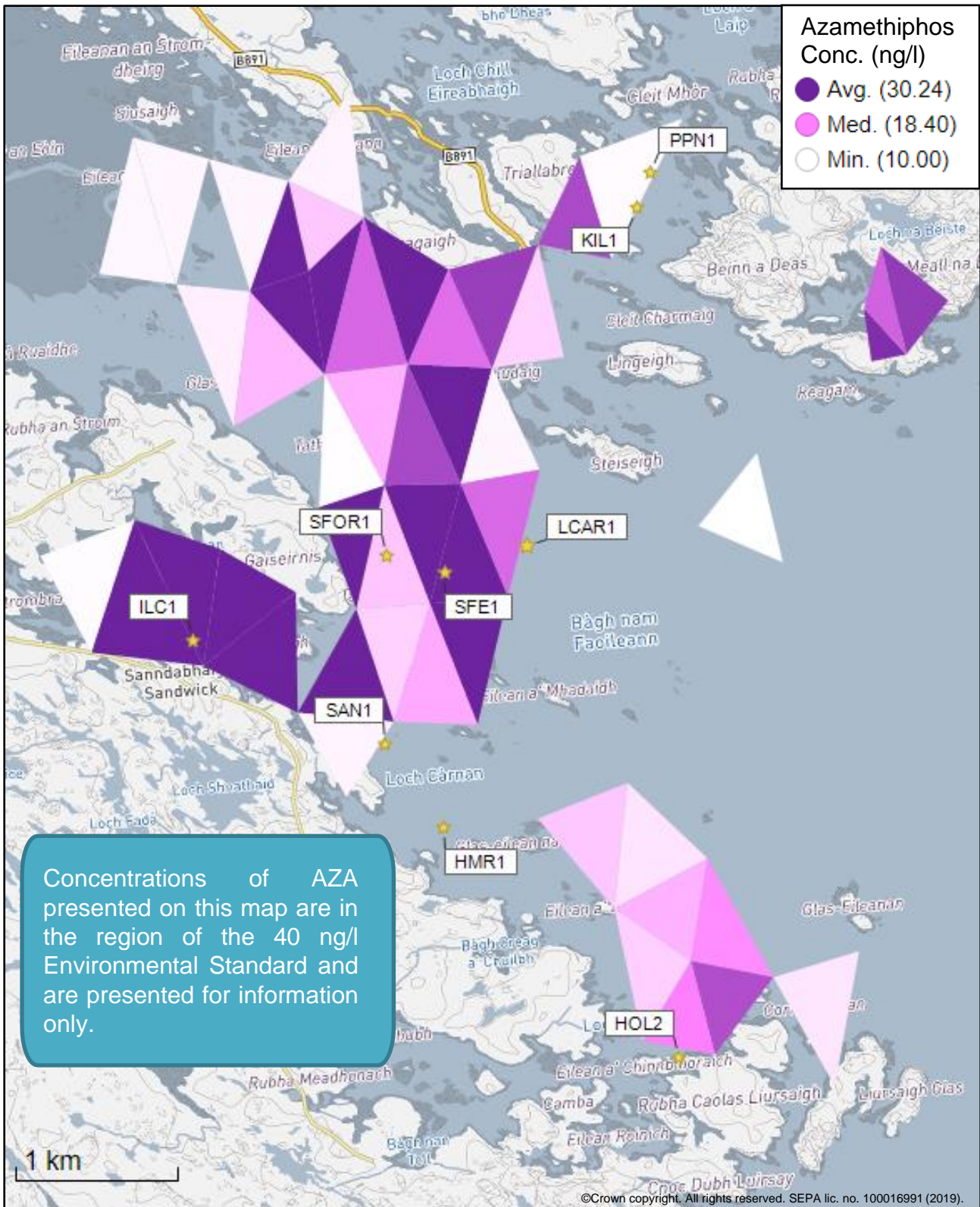


Figure 7: Modelled average Azamethiphos concentration over four days from neap tide release for the proposed site (Loch Carnan (LCAR1)) and other relevant sites.

### 3 Risk Identification

The screening modelling output summarised in section 2 is compared against available information on features of interest (see section 1.1.2). Features which require attention are presented with any additional comments. Identified features will need to be considered during the pre-application phase.

These should be addressed in the applicant "Method Statement". Please refer to the Modelling Method Statement section on the SEPA Website. (<https://www.sepa.org.uk/regulations/water/aquaculture/pre-application/>)

#### 3.1 Identified features which require attention

##### 3.1.1 Table of identified features

Based on screening output the following features of interest have been identified.

Table 3: Table of identified features

No.	Feature Name	Feature Type	Location (Easting, Northing)	Brief Reason For Identification
1				
2				
3				

#### 3.2 Additional comments on identified features

Screening modelling predicts relatively low sediment influence from Loch Carnan (LCAR1). The site is not near any identified sensitive features, however there a number of neighbouring farms, with potential for interaction. The relatively low biomass of these other farms means the risk from solids is considered to be low. However, should this farm require an increased bath medicine amount than that allowed through BathAuto, marine modelling will be required. This will need to include bath medicine discharges from all sites identified in this screening report.

The relatively low flow speeds in this area, mean this site is more likely to struggle with having high enough dispersion to meet mixing zone criteria. Given it is a new site, default NewDepomod will be required. It is highly recommended that NewDepomod modelling is undertaken prior to proceeding further with this application.



### 3.3 Risks identified from contextual site data

Should this application proceed, the total licenced biomass in this area would be 12341t.

Table 4: Table of licenced biomass from farms identified as likely to add to cumulative risks.

<b>Site Name</b>	<b>Location (Easting, Northing)</b>	<b>Biomass (tonnes)</b>	<b>Last Production Cycle</b>
<b>LCAR1</b>	84708, 843928	1467	Proposed
<b>HMR1</b>	84060, 842230	473.5	No record of use
<b>HOL2</b>	85400, 840700	311	Fish last on site Jun 05
<b>ILC1</b>	82600, 843500	410	Fish last on site May 03
<b>KIL1</b>	85547, 845966	450	Fish last on site Jul 19
<b>PPN1</b>	85645, 846176	654	Fish last on site Jul 19
<b>SAN1</b>	83740, 842770	500	Fish last on site Mar 21
<b>SFE1</b>	84193, 843798	800	Fish last on site Sep 21
<b>SFOR1</b>	83835, 843935	600	Fish last on site Dec 17

## 4 Conclusions of screening modelling and risk identification

Following screening modelling and risk identification we make a number of conclusions and recommendations.

### 4.1 Conclusions

#### 4.1.1 Screening Modelling

- According to screening modelling, the proposed site (Loch Carnan (LCAR1)) is in an area of moderate dispersion and has a relatively low capacity for erosion of material on the sea bed.
- From sediment and bath treatment modelling:
  - Information presented in section 2 indicates that the relative influence of Loch Carnan (LCAR1) is likely to be similar to other sites for a similar tonnage.
  - The influence on the surrounding sea area from Loch Carnan (LCAR1) is likely to be moderate.
  - The areas of influence from Loch Carnan (LCAR1), and other sites modelled appear to interact at low levels.
  - It is likely that discharges of bath medicines from Loch Carnan (LCAR1) will be dispersed to moderate levels over a relatively small area.
  - Loch Carnan (LCAR1) is likely to result in an increase in the total influence of all sites modelled. This is likely to interact with other areas of influence generated by existing sites.
- Due to the relatively low dispersion nature of the waters surrounding the site, nutrient discharges from Loch Carnan (LCAR1) may have an influence, however the relatively low proposed biomass means it is unlikely to have a strong influence on the surrounding sea area.

#### 4.1.2 Risk identification

The modelled influence from Loch Carnan (LCAR1) does not appear to impact any features of interest. Therefore, unless a bath medicine quantity, greater than that allowed through the conservative BathAuto, is required, marine modelling will not be required for this site.

It is likely, due to the low dispersion nature of the waters surrounding the farm, that the mixing zone conditions may struggle to be met. Therefore, it is recommended that default NewDepomod modelling is carried out, prior to undertaking any further work at this site.

## 4.2 Recommendations

### 4.2.1 Site suitability

Consideration of screening modelling and risk identification suggests that it is possible that discharges from the proposed site will be able to comply with the relevant aspects of the SEPA Aquaculture Regulatory Framework.

It is also possible that the site will be able to comply with our mixing zone regulatory framework. This will need to be demonstrated using the NewDepomod model.

No features at risk have been identified at this stage.

Following the engagement meeting(s), this report will be revised and this should allow to the applicant to submit a method statement which address the issues raised in this document.

### 4.2.2 Further modelling

- Due to the size of the proposed farm, and the lack of identified risks, 2D marine modelling is not required for this farm.
- However, should an insufficient bath medicine quantity be granted through BathAuto, then 2D marine modelling of baths will need to be undertaken. The size of the marine model should include discharges from all sites identified in this report. The resolution of the marine model should be relatively fine around the proposed site and identified features at risk.
- NewDepomod modelling should be undertaken for the proposed site. It is strongly recommended that default NewDepomod modelling is undertaken prior to any marine modelling, to ensure the local impacts of the proposed biomass are acceptable.

## 5 References

- [1] *Regulatory Modelling Guidance For The Aquaculture Sector. Published on SEPA website..*
- [2] <http://marine.gov.scot/information/wider-domain-scottish-shelf-model>.

