

AQUACULTURE MODELLING SCREENING & RISK IDENTIFICATION REPORT: Hellisay (HEL1)

Version One: August 2021

Every day SEPA works to protect and enhance Scotland's environment, helping communities and businesses thrive within the resources of our planet.

We call this **One Planet Prosperity**



For information on accessing this document in an alternative format or language please either contact SEPA by telephone on 03000 99 66 99 or by email to equalities@sepa.org.uk

If you are a user of British Sign Language (BSL) the Contact Scotland BSL service gives you access to an online interpreter enabling you to communicate with us using sign language.

<http://contactscotland-bsl.org/> www.sepa.org.uk

03000 99 66 99

Strathallan House, Castle Business Park, Stirling, FK9 4TZ

Scope of report

As part of the SEPA Aquaculture Regulatory Framework it is recommended that a proposed application for a marine fin fish aquaculture site should undergo a Screening Modelling and Risk Identification process. SEPA carries out this work and this is described on the SEPA aquaculture website Pre-application section:

(<https://www.sepa.org.uk/regulations/water/aquaculture/pre-application/>)

This report presents information arising from that process. Screening modelling methods are outlined and maps and tables describing the modelled impacts are shown. Risks arising from consideration of the model output are listed. Conclusions and recommendations are made regarding the proposed site.

Executive summary

SEPA has received a proposal to vary an existing marine fin fish aquaculture site called Hellisay (HEL1). The site is located in the Sound of Barra, currently at location: 75993, 803169 (Easting, Northing). The existing maximum biomass is 2150t at this location. No increase in biomass is proposed. This proposal is to replace the current 12 x 120m circumference pens with 5 x 200m circumference pens, with a small change in location to: 75858, 803190.

Following screening modelling and risk identification we have concluded the following:

- It is possible that discharges from Hellisay (HEL1) will be able to comply with the relevant aspects of the SEPA Aquaculture Regulatory Framework.
- Features at risk, identified at this stage, do not appear to influence the feasibility of the proposed site with respect to the regulatory framework. Detailed marine modelling of solids should be undertaken, to ensure the risk to the wider Sound of Barra SAC is low.
- Hellisay (HEL1) is suitable to progress to the next stage of the pre-application process outlined on the SEPA website.
- NewDepomod modelling has been undertaken and assessed for this site and shows the under pen and mixing zone impacts are not predicted to exceed environmental standards. NewDepomod modelling of the licensed, currently on site and proposed farm layouts predicts minimal change in area of impact. Operator compliance monitoring and SAC condition monitoring does not show any significant change has occurred during the running of the current site. A comparison of the percentage cover of maerl patches >5% reported from the 2013, 2016, 2018 and 2020 maerl surveys will be required as part of this application.

List of abbreviations

SEPA Scottish Environment Protection Agency

List of chemical abbreviations

AZA Azamethiphos

Contents

1 Introduction	9
1.1 The objectives of screening modelling and risk identification	9
1.2 Screening modelling methods	10
2 Screening modelling	13
2.1 Site proposal	13
2.2 Dispersion and erosion capacity maps	13
2.3 Sediment influence maps and analysis	14
2.4 Bath medicine influence maps and analysis	16
3 Risk Identification	25
3.1 Identified features which require attention	25
3.2 Additional comments on identified features	26
3.3 NewDepomod	26
3.4 Risks identified from contextual site data	28
4 Conclusions of screening modelling and risk identification	30
4.1 Conclusions	30
4.2 Recommendations	31
5 References	32

List of Figures

Figure 1: East Coast, Lewis and Harris model grid.....	12
Figure 2: Modelled average water speed (metres per second – m/s) in the sea area surrounding the proposed site (Hellisay (HEL1)).	19
Figure 3: Modelled percentage of time the water flow speed is above 0.095 m/s in the sea area surrounding the proposed site (Hellisay (HEL1)).	20
Figure 4: Modelled average sediment intensity over one month for the proposed site only (Hellisay (HEL1)).	21
Figure 5: Modelled average sediment intensity over one month for the proposed site (Hellisay (HEL1)) and other relevant sites.	22
Figure 6: Modelled average Azamethiphos concentration over four days from neap tide release for the proposed site only (Hellisay (HEL1)).	23
Figure 7: Modelled average Azamethiphos concentration over four days from neap tide release for the proposed site (Hellisay (HEL1)) and other relevant sites.	24
Figure 8. 2019 MOWI survey of Maerl coverage near the Hellisay (HEL1) site.	26
Figure 9: NewDepomod default run output for the currently licenced farm.	27
Figure 10: NewDepomod default run output for the currently operational farm.	27
Figure 11: NewDepomod default run output for the proposed farm.	28

List of Tables

Table 1: Sediment influence information for each site.	16
Table 2: Azamethiphos influence information for each site.	18
Table 3: Table of identified features	25
Table 4: Table of licenced biomass from farms identified as likely to add to cumulative risks.	28

1 Introduction

Screening Modelling and Risk Identification are important steps in the SEPA regulatory framework for marine pen fish farms. They are carried out by SEPA at the pre-application stage, which is described in detail at:

<https://www.sepa.org.uk/regulations/water/aquaculture/pre-application/>.

This document briefly describes the objectives of screening and risk identification and summarises the methods used. Screening output for the proposed site is then presented with comments. Risks identified from the screening output are detailed. Conclusions and recommendations about the suitability of the proposed site are then made.

1.1 The objectives of screening modelling and risk identification

A summary of the modelling methods employed during screening modelling is outlined in section 1.2. The objectives of screening modelling and risk identification are outlined below.

1.1.1 Screening modelling

Marine Modelling technology can be used to simulate and predict the potential influence of discharges on the marine environment. SEPA will require the majority of proposed farms to conduct detailed marine modelling, as outlined in our Aquaculture Modelling guidance [1] and on the SEPA Website.

Marine modelling can also be used at an earlier stage to provide an initial estimate of the influence of material discharged from a proposed site.

SEPA will carry out marine modelling at the screening and risk identification stage. This is a simplified version of the detailed modelling required of the applicant. However, it will be sufficient to perform an initial risk assessment of a proposal. Screening marine modelling will also include discharges from other relevant aquaculture sites and major sources.

The objectives of the simplified screening modelling are to:

- Produce maps of the predicted dispersive and erosive capacity of the sea areas in the vicinity of aquaculture sites
- Produce maps of the predicted spread of sediment discharged from aquaculture sites
- Produce maps of the predicted spread of bath treatment medicines from aquaculture sites
- Present an analysis of the potential influence of sediment and bath treatment discharges from the proposed site alongside existing sites within the surrounding sea area

- Present information on the sensitive features and sites of interest within the surrounding sea area, which must be addressed during pre-application work
- Present a summary of the suitability of the proposal with respect to the dispersal of waste and how this may be modelled.

1.1.2 Risk identification

Maps and analysis of screening output will be compared to information relating to sensitive features and relevant areas of interest. These may include:

- Marine Protected Area (MPA)
- Special Area of Conservation (SAC)
- Priority Marine Feature (PMF)
- Any site identified via consideration of other permitted or regulatory activities.

SEPA Staff will meet to discuss screening model output and the relevant sensitive features information. Following this meeting, a list of identified risks will be added to this report.

1.1.3 Conclusion of screening modelling and risk identification

Following the identification of risks, SEPA will present a summary of the suitability of the proposal with respect to the:

- Dispersal of waste from the proposed site and other sources
- Risks posed to sensitive features
- Likely level of modelling that will be required to address the risks identified.

1.2 Screening modelling methods

Marine models divide the sea up into a “grid” of boxes or triangles (often called cells). Each of these is given a water depth. For the screening modelling presented in this report the Marine Scotland “East Coast Lewis and Harris” (ECLH) has been used. An image of the ECLH model grid is shown in Figure 1. This grid has been set up within a marine modelling software package called MIKE 21 which is manufactured by the company DHI A/S (<https://www.dhigroup.com/>).

Marine models carry out calculations across a grid to work out how seawater moves and mixes in response to tidal and weather forces. Marine models can also be used to simulate how seawater moves and mixes due to salinity and temperature differences across an area, particularly in response to inputs of freshwater from rivers. For pollutant influence assessments the mixing (dispersion) of dissolved (bath medicine) and particulate (sediment) pollutants can also be estimated. Calculations within a marine model can be performed in three dimensions (3D), where the grid is split into layers to better represent how properties of the sea change with depth. Two dimensional (2D) models can also be created where processes over the water depth are simplified. The amount of mixing in a marine model can be varied using settings in the software.

Screening modelling is currently carried out with 2D models using average mixing settings in the model software. In many areas, this approach will be sufficient to make an initial estimate of the influence of a proposed site. Our screening assessment will take into account factors which may limit a 2D approach. We will also consider whether a particular location is adequately represented by the available models.

1.2.1 Water movement and mixing modelling

Water movement and mixing modelling (hydrodynamics) has been carried out to generate one month of results. The boundaries (edge(s) of) the model have been driven using the “wider domain” Scottish Shelf Model [2]. Wind forces and freshwater inputs have been applied to the model from the same source. The results generated are an estimate of the average water movement and mixing conditions within the model area.

1.2.2 Sediment waste modelling

Screening modelling provides a precautionary and **indicative** estimate of the size, location and intensity of waste organic material released from aquaculture sites.

The release of sediment from sources within the model area is simulated using one month of hydrodynamic results along with particle tracking modelling technology. Virtual particles are continually introduced to the model grid to represent the potential dispersion of sediment from the sources. Particles in the model are moved and mixed by the hydrodynamics. Additionally, particles are assigned simplified properties, which allow them to settle through the water and be re-suspended (eroded and lifted) from the sea bed.

1.2.3 Bath medicine modelling

Screening modelling provides a precautionary and **indicative** estimate of the size, location and concentration of bath medicine releases.

The release of bath treatment medicine from sources within the model area is simulated using hydrodynamic results along with particle tracking modelling technology. Virtual particles are introduced to the model grid to represent the potential dispersion of bath medicines from the sources. Particles in the model are moved and mixed by the hydrodynamics. Releases of bath medicines are simulated under worst case mixing (dispersion) conditions, which occur under neap tides. The maximum treatment amount likely to be used at each site is released into the model at the same time and plumes are tracked over the following 96 hours (4 days). Treatment amounts used at screening have been derived from an analysis of historical data. Additionally, all bath medicine particles are concentrated within the top 5 m of the sea area. As all bath medicines are likely to disperse in a similar way, only Azamethiphos (AZA) has been modelled at the screening stage.

1.2.4 Nutrient assessment

Whilst nutrients are not directly modelled during screening, the dispersion of bath medicine releases will give an indication of the likely level of nutrient dispersion. This will be considered alongside any pre-existing nutrient assessment information that may be available.

1.2.5 Analysis of modelling output

SEPA processes the screening modelling output and places it into a standard analysis application built in TIBCO Spotfire. The application allows for the production of standard maps and tables, which are presented below.

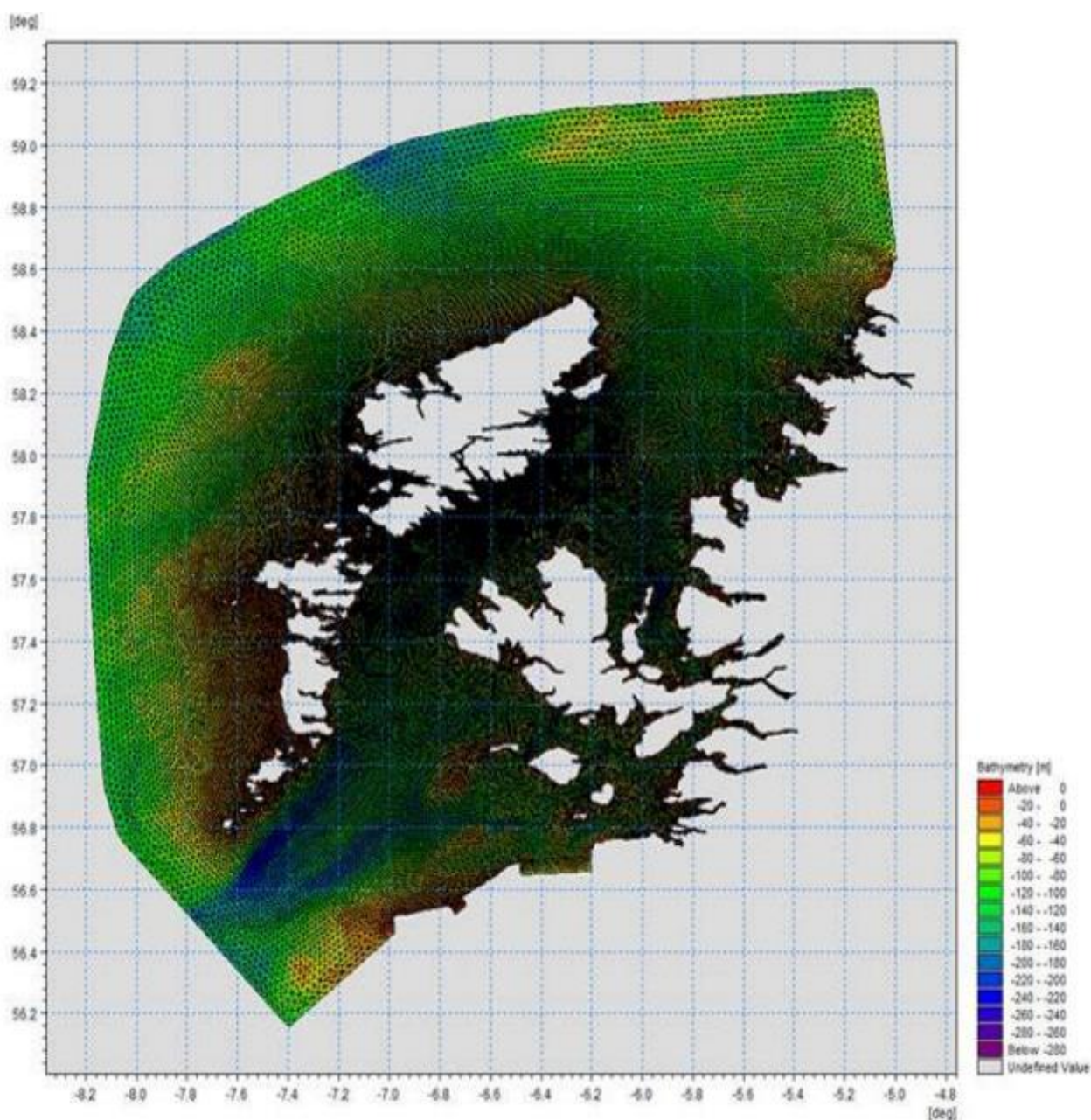


Figure 1: East Coast, Lewis and Harris model grid

2 Screening modelling

2.1 Site proposal

SEPA has received a proposal to vary an existing marine fin fish aquaculture site called Hellisay (HEL1). The site is located in the Sound of Barra, currently at location: 75993, 803169 (Easting, Northing). The existing maximum biomass is 2150t at this location. No increase in biomass is proposed. This proposal is to replace the current 12 x 120m circumference pens with 5 x 200m circumference pens, with a small change in location to: 75858, 803190.

2.1.1 Accuracy of model in the area surrounding the proposal

The East Coast Lewis and Harris model used for screening modelling has a relatively low resolution in this area, so output needs to be treated with a degree of caution. However, it has been compared against various sources of observed current meter data and this comparison indicates that the model provides a reasonable description of the physical processes in the vicinity of the proposed site.

2.2 Dispersion and erosion capacity maps

Modelled water movement in a sea area can be analysed and presented to show the capacity of the water to move and disperse discharged substances. It is also possible to show the capacity available to erode substances from the seabed. This information is a useful guide to the potential size of a marine fin fish aquaculture farm at a particular location.

Marine fin fish aquaculture farms using open-net pens will benefit from operating in locations where there are strong, repeating, water currents to erode and disperse waste.

For the purposes of screening we consider locations which meet the following water flow criteria to be generally suitable for larger farms:

Locations with average water flow speeds of greater than, or equal to, 0.12 metres per second (0.23 knots)

Locations where water flow speeds are often above the threshold of 0.095 meters per second (0.18 knots).

Locations with these properties are likely to disperse discharged material rapidly, and regularly erode sediment discharged to the seabed. In general, we would look for these properties to be maintained over a large area around a proposed site.

The thresholds stated above are indicative.

A map of modelled average water flow speed for the area surrounding the proposed site is shown in Figure 2. The average water flow speed in each cell of the model grid (see section 1.2) has been assigned a shade. The key for the shading is shown in the top left of the figure. Grid cells that have average speeds less than 0.12 m/s (metres per second) are marked on the figure. The greater the shading, the slower the average current speed and the lower the capacity for dispersion.

Figure 3 is a map of the percentage of time the modelled water flow speed in a grid cell is above 0.095 m/s (metres per second). The greater the shading, the lower the capacity for material to be eroded from the seabed.

Licensed aquaculture farms in the vicinity of the proposed site are also marked on Figure 2 and Figure 3. Discharges of material from these sites have been included in the screening modelling.

Based on the maps of the modelled water flow properties we can make the following observations about the proposed site location:

- It lies in a moderate - high dispersion area.
- It lies in an area where water flow has a moderate capacity to erode material on the seabed.

2.3 Sediment influence maps and analysis

Modelled particles in a sea area can be analysed for each modelled grid cell and presented to show the potential influence of discharged sediment on the surrounding sea area.

2.3.1 Sediment influence maps

Figure 4 shows a map of the modelled average sediment intensity over one month (time average) for the proposed site only. Grid cells within the model that are influenced by modelled sediment are shaded according to the intensity of the influence in grams per square metre (g/m²).

Values less than 1 g/m² have been excluded from the map and subsequent calculations. These low concentration cells are produced by the particle tracking approach but they are not considered to be representative of the main influence of a discharge.

The shading key is shown in the top left of the figure. Cells which are shaded purple are similar to the average intensity in the total area of influence shown in the map. Cells shaded pink are similar to the median (middle value in the range) intensity value shown on the map. White shaded cells are similar to the minimum intensity value shown on the map.

- The average and median sediment intensity over the area of influence is <1 g/m² and <1 g/m² respectively.

- Cells influenced by the proposed site do not appear to lie close to other modelled farm sites.

Figure 5 shows a map of the modelled average sediment intensity over one month for the proposed site and other relevant sites. Grid cells within the model that are influenced by modelled sediment are shaded according to the intensity of the influence in grams per square metre (g/m²). The shading key is shown in the top left of the figure and is in a similar format as that shown in Figure 4. The average sediment intensity, after including all relevant sites, is increased.

- The average and median sediment intensity over the area of influence is <1 g/m² and <1 g/m² respectively.
- Cells influenced by other modelled sites do not appear to lie close to the proposed site.

2.3.2 Sediment influence analysis

Model grid cells can be analysed to estimate the size and concentration of the potential sediment influence from the modelled sites.

- The total area of sediment influenced by the four sites modelled is estimated to be 0 square kilometres (km²).
- As shown in Figure 5, the average and median intensity over this area is <1g/m² and <1 g/m² respectively.
- The total weight of fish that generates this modelled influence is 4721.9 tonnes.

Table 1 shows the information for each individual site modelled. It is important to note that the total area of influence for all sites is not the sum of the numbers in Table 1. The total area of influence worked out above takes into account that the individual areas of influence from different sites will overlap.

Table 1: Sediment influence information for each site.

Site Name	Average Intensity (g/m ²)	Area of Influence (km ²)	Median Intensity (g/m ²)	Max weight Of Fish (tonnes)
HEL1	Less than 1	0	Less than 1	2150
ENC1	Less than 1	0	Less than 1	80.2
GIGH1	Less than 1	0	Less than 1	2400
RCN1	Less than 1	0	Less than 1	91.7

There are no Environmental Standards for sediment intensity. However, we consider that:

- underneath farm pens, an intensity of 2000 g/m² or less is likely to lead to an acceptable sea bed ecological outcome
- at the edge of the mixing zone, an intensity of 250 g/m² or less is likely to lead to an acceptable sea bed mixing zone outcome

The estimate of influence detailed above is indicative. The values presented are lower than the sediment intensity values given above. However, we recognise that low sediment concentrations may be useful for the identification of risks.

2.4 Bath medicine influence maps and analysis

Modelled particles in a sea area can be analysed for each modelled grid cell and presented to show the potential influence of discharged bath medicine on the surrounding sea area. Results presented are for the AZA medicine (see section 1.2.3).

2.4.1 Bath medicine influence maps

Figure 6 shows a map of the modelled average AZA concentration over four days for the proposed site only. Grid cells within the model which experience an AZA influence are shaded according to the concentration of AZA in nanograms per litre (ng/l).

Values less than 10 ng/l have been excluded from the map and subsequent calculations. These low concentration cells are produced by the particle tracking approach but they are not considered to be representative of the main influence of a discharge.

Please note that the Environmental Standard for Azamethiphos with the lowest concentration is 40 ng/l. This must be met 72 hours after the material has been discharged. The estimate of influence detailed here is precautionary. In the information presented below areas of influence above 40 ng/l have been quoted. However the average and median concentrations are quoted for the entire area of influence above 10 ng/l.

The shading key is shown in the top left of the figure. Cells which are shaded black are similar to the average concentration in the total area of influence shown in the map. Cells shaded pink are similar to the median (middle value in the range) concentration shown on the map. White shaded cells are similar to the minimum concentration value shown on the map.

- The average and median concentration over the total area of influence is <10 ng/l and <10ng/l respectively.
- Cells influenced by the proposed site do not appear to lie close to other modelled farm sites.

Figure 7 shows a map of the modelled average AZA influence over four days for the proposed site and other relevant sites. The average AZA influence, after including all relevant sites, is increased.

- The average and median AZA concentration over the total area of influence is 17.91 ng/l and 16.46 ng/l respectively.
- Cells influenced by other modelled sites do not appear to lie close to the proposed site.

2.4.2 Bath medicine influence analysis

Model grid cells can be analysed to estimate the size and concentration of the potential AZA influence from the modelled sites.

- The area of AZA influenced above 40 ng/l from all sites modelled is estimated to be 0 square kilometres (km²).
- As shown in Figure 7, the average and median concentration over the total area of influence is 17.91 and 16.46 ng/l respectively.
- The total weight of fish that generates this modelled influence is 4721.9 tonnes.

Table 2 shows the information for each individual site modelled. It is important to note that the total area of influence above 40ng/l for all sites quoted above is not the sum of the numbers

in Table 2. The total area of influence worked out above takes into account that the individual areas of influence above 40 ng/l from different sites will overlap.

Table 2: Azamethiphos influence information for each site.

Site Name	Average Conc. (ng/l)	Area of Influence Above 40 ng/l (km ²)	Median Conc. (ng/l)	Weight Of Fish (tonnes)
HEL1	<1	0	<1	2150
ENC1	16.95	0	16.61	80.2
GIGH1	<1	0	<1	2400
RCN1	14.95	0	14.72	91.7

Please note that the Environmental Standard for Azamethiphos with the lowest concentration is 40 ng/l. This must be met 72 hours after the material has been discharged. The estimate of influence detailed above is precautionary. The values presented are close to the 40 ng/l standard. Detailed modelling will be required to demonstrate compliance with all Environmental Standards.

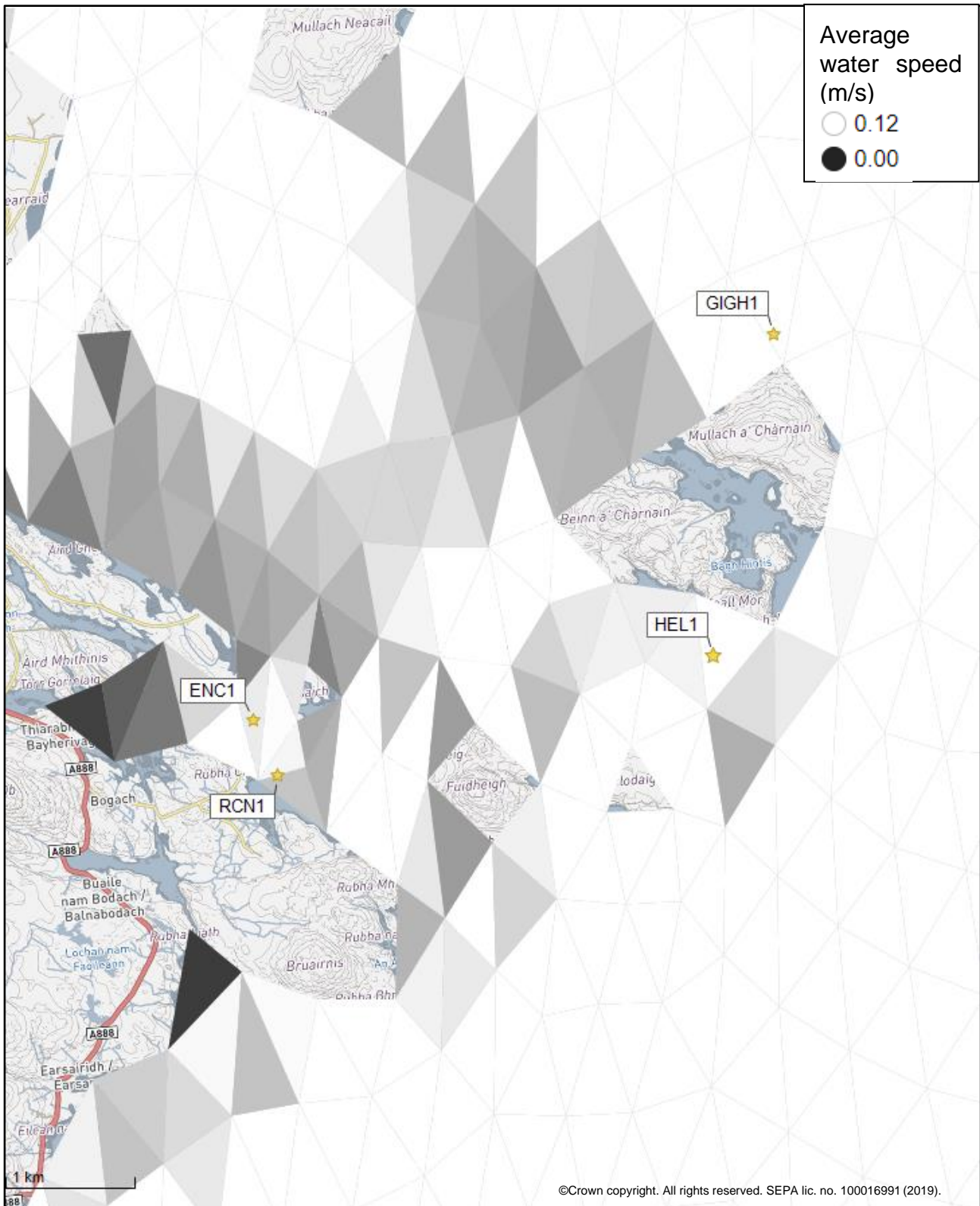


Figure 2: Modelled average water speed (metres per second – m/s) in the sea area surrounding the proposed site (Hellisay (HEL1)).

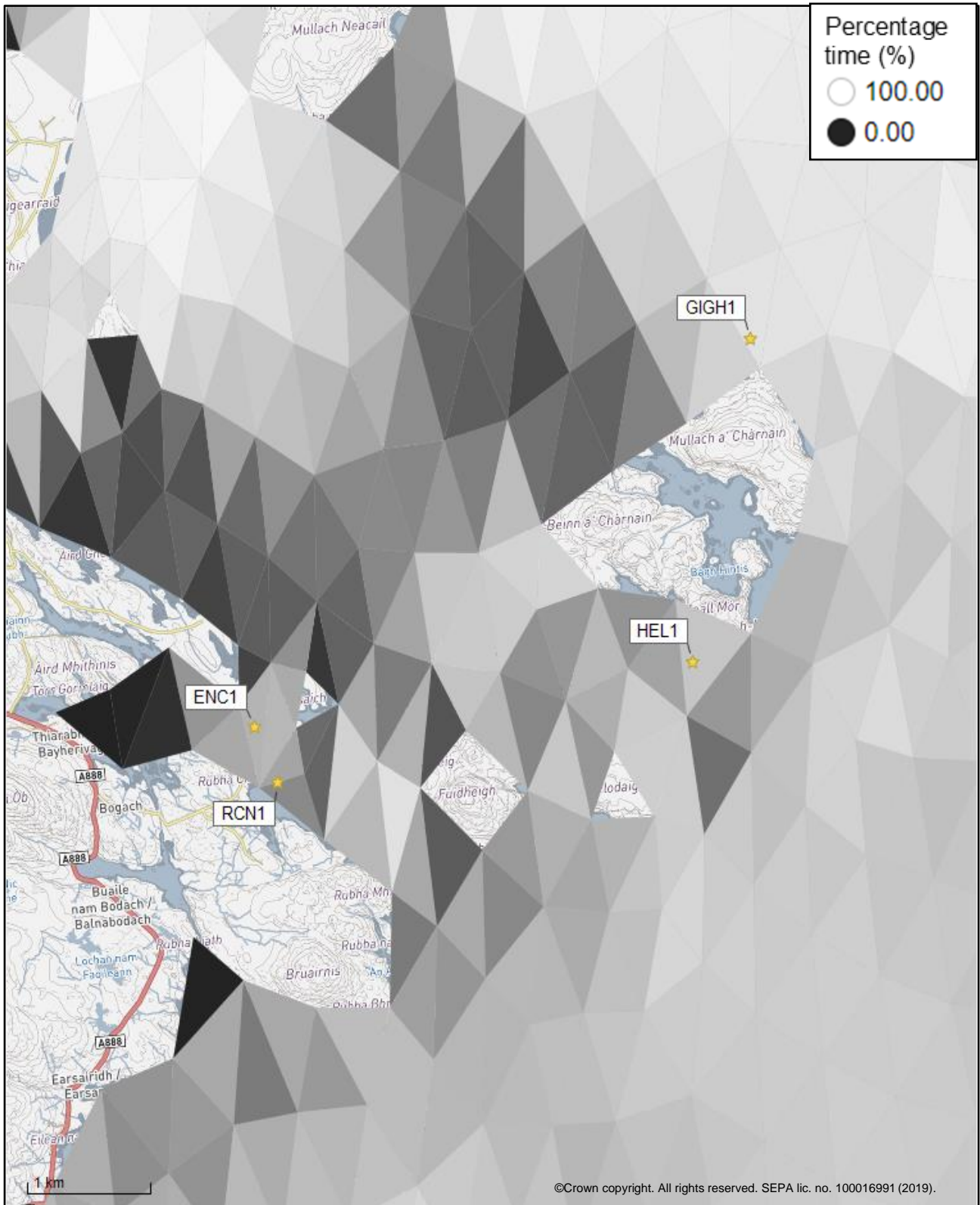


Figure 3: Modelled percentage of time the water flow speed is above 0.095 m/s in the sea area surrounding the proposed site (Hellisay (HEL1)).

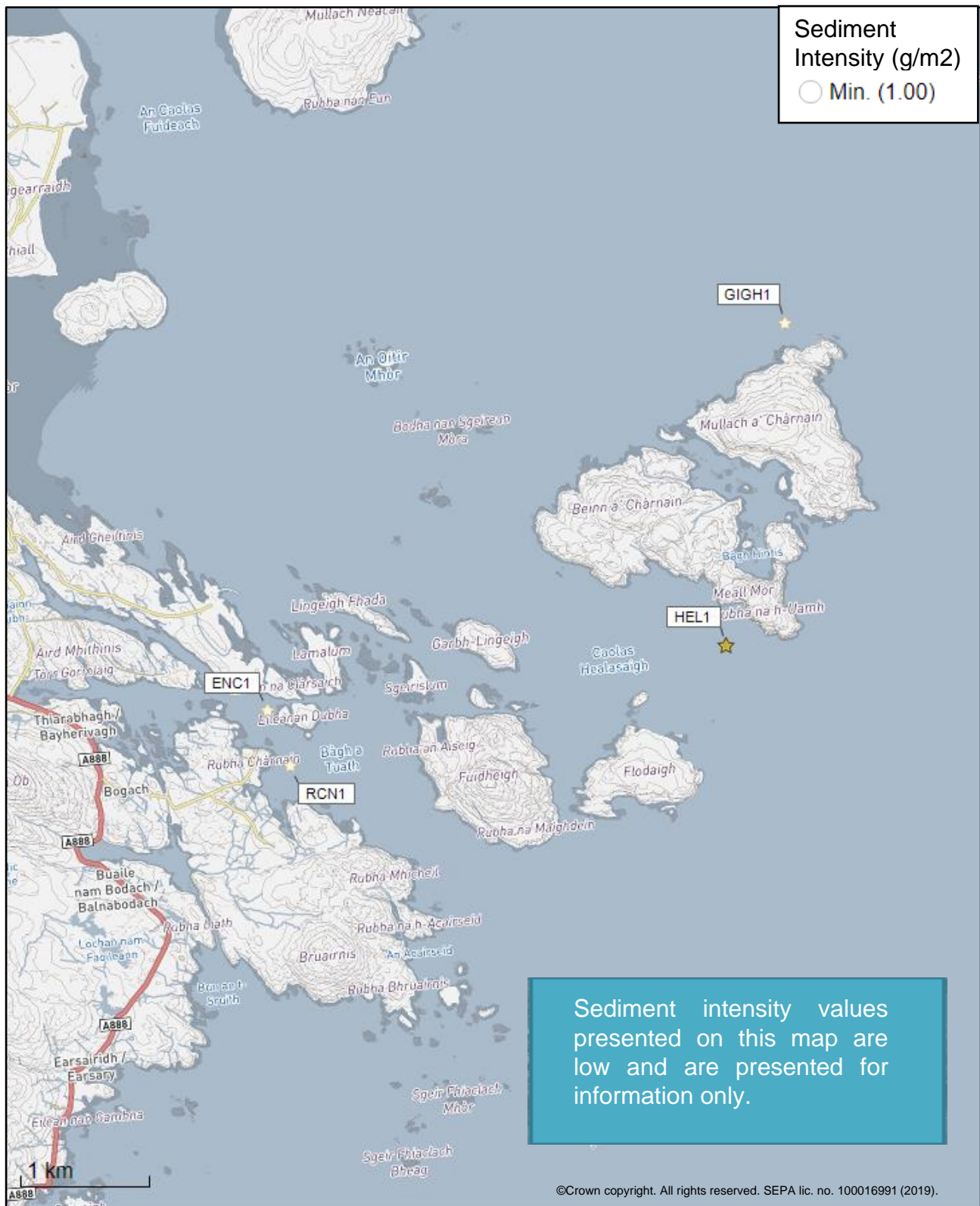


Figure 4: Modelled average sediment intensity over one month for the proposed site only (Hellisay (HEL1)).

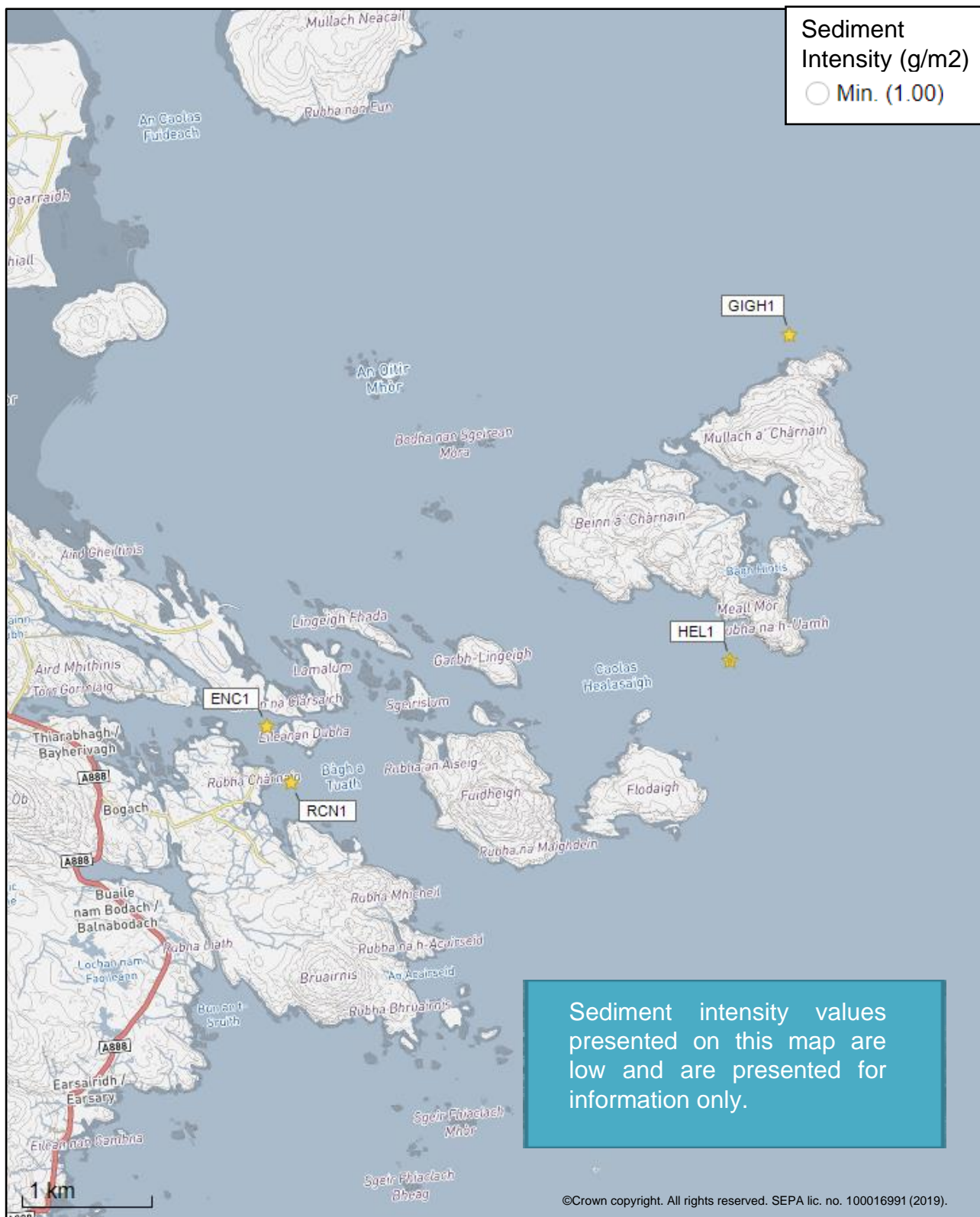


Figure 5: Modelled average sediment intensity over one month for the proposed site (Hellisay (HEL1)) and other relevant sites.

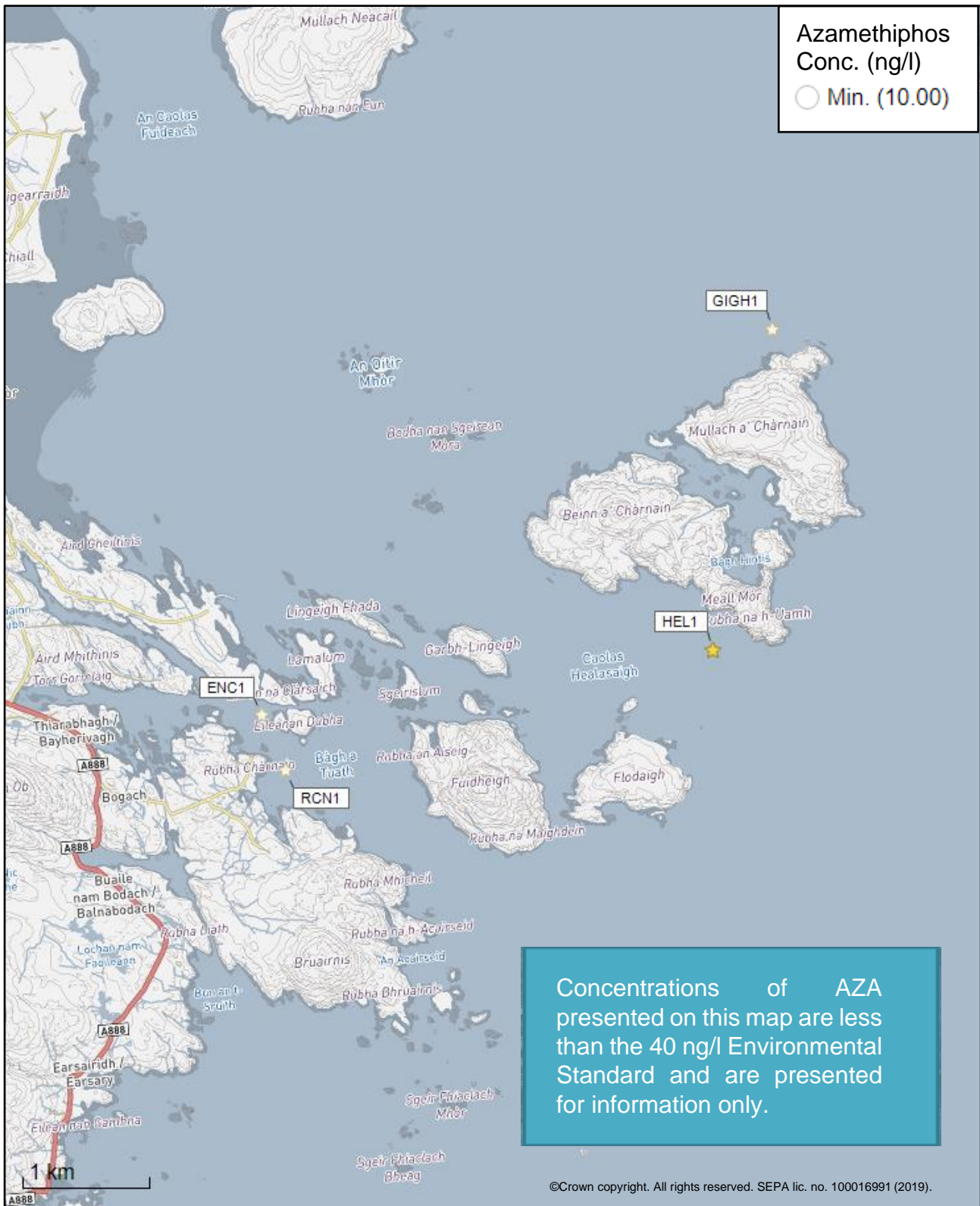


Figure 6: Modelled average Azamethiphos concentration over four days from neap tide release for the proposed site only (Hellisay (HEL1)).

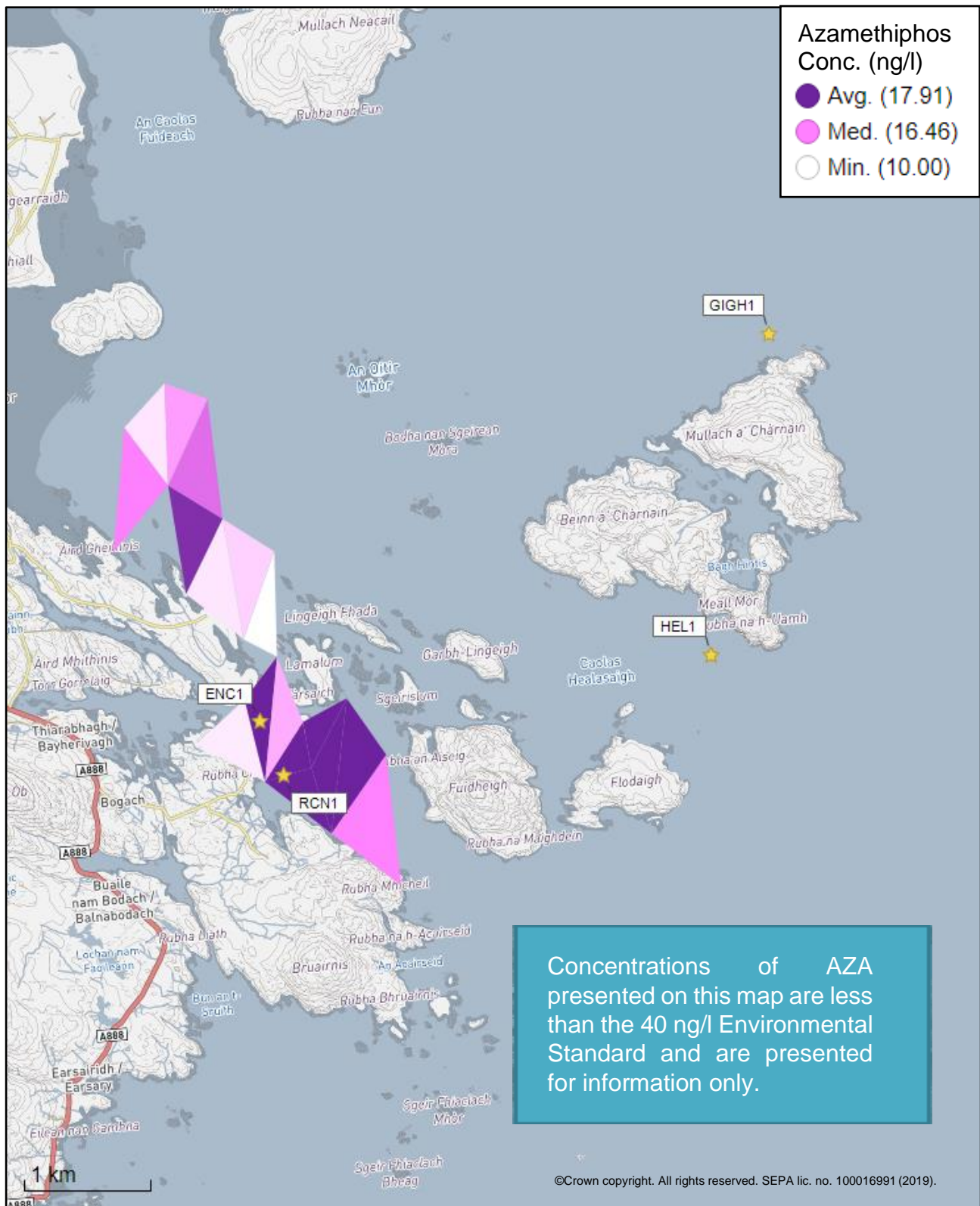


Figure 7: Modelled average Azamethiphos concentration over four days from neap tide release for the proposed site (Hellisay (HEL1)) and other relevant sites.

3 Risk Identification

The screening modelling output summarised in section 2 is compared against available information on features of interest (see section 1.1.2). Features which require attention are presented with any additional comments. Identified features will need to be considered during the pre-application phase.

These should be addressed in the applicant "Method Statement". Please refer to the Modelling Method Statement section on the SEPA Website. (<https://www.sepa.org.uk/regulations/water/aquaculture/pre-application/>)

3.1 Identified features which require attention

3.1.1 Table of identified features

Based on screening output the following features of interest have been identified.

Table 3: Table of identified features

No.	Feature Name	Feature Type	Location (Easting, Northing)	Brief Reason For Identification
1	Subtidal sandbanks (inc. maerlbeds)		Fig.8	At risk from sediment influence.
2	Reefs		Fig.8	At risk from sediment influence.
3				

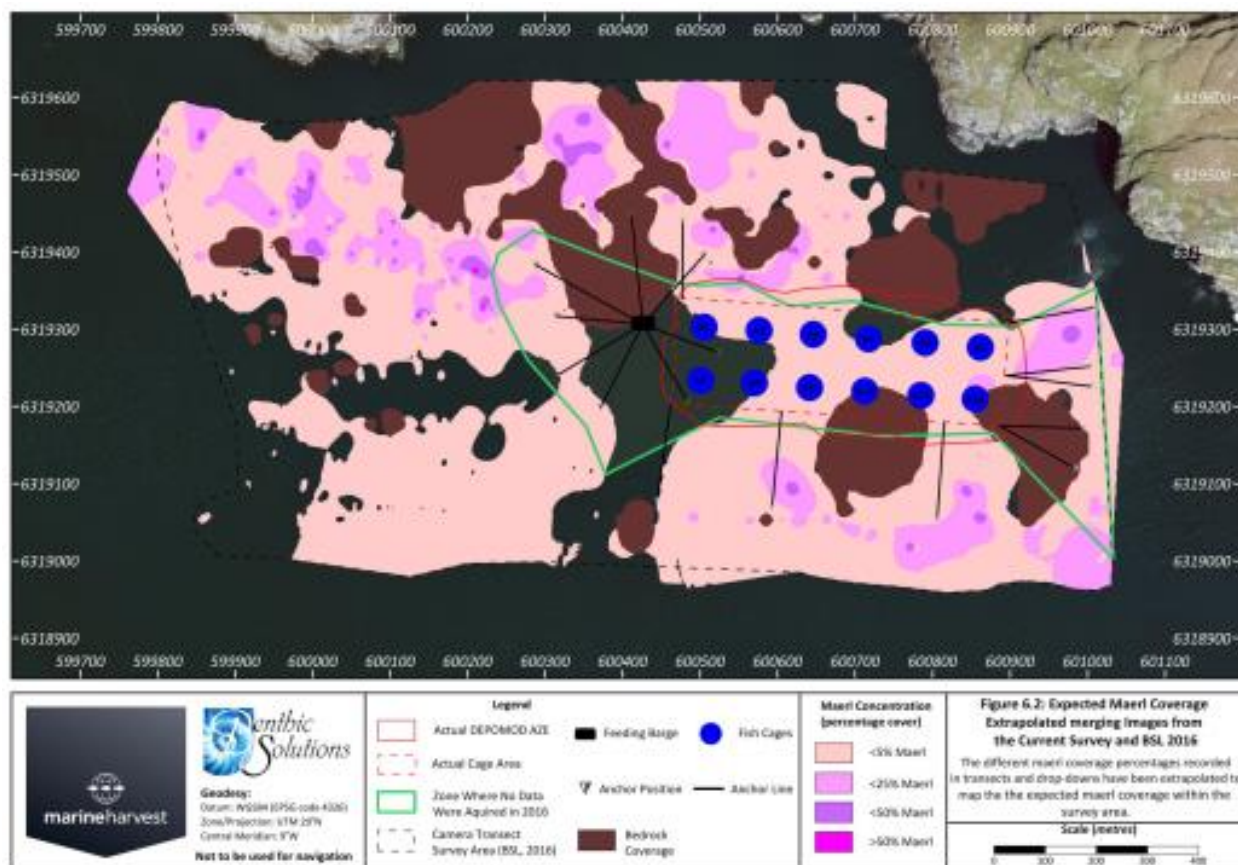


Figure 8. 2019 MOWI survey of Maerl coverage near the Hellsay (HEL1) site.

3.2 Additional comments on identified features

Screening modelling predicts the impacts to the wider environment from solids and bath medicines will be low. Given there is no increase in biomass at this site, the impact to the wider environment should not be significantly increased by this change in pen layout, however the resolution of screening in this area is low and the site is within an SAC. Therefore, marine modelling of solids will be required for this site, to ensure there is no significant impact on the wider SAC.

Due to the dispersive nature of water in this area, and the lack of proximity with other farms, cumulative modelling of solids will not be required.

Screening does not predict any impact from bath medicines, Therefore, unless a bath medicine quantity, greater than that allowed through the conservative BathAuto, is required, marine modelling of baths will not be needed for this site.

3.3 NewDepomod

Compliance and habitat mapping surveys have shown protected features of the SAC in the vicinity of the farm, with maerl beds particularly sensitive to sediment deposition. Much of the maerl in the area occurs in the troughs of sand ripples and therefore is mobile

in nature. NewDepomod modelling has been undertaken to demonstrate that the risk to maerl from the farm is not going to increase with the proposed pen layout.

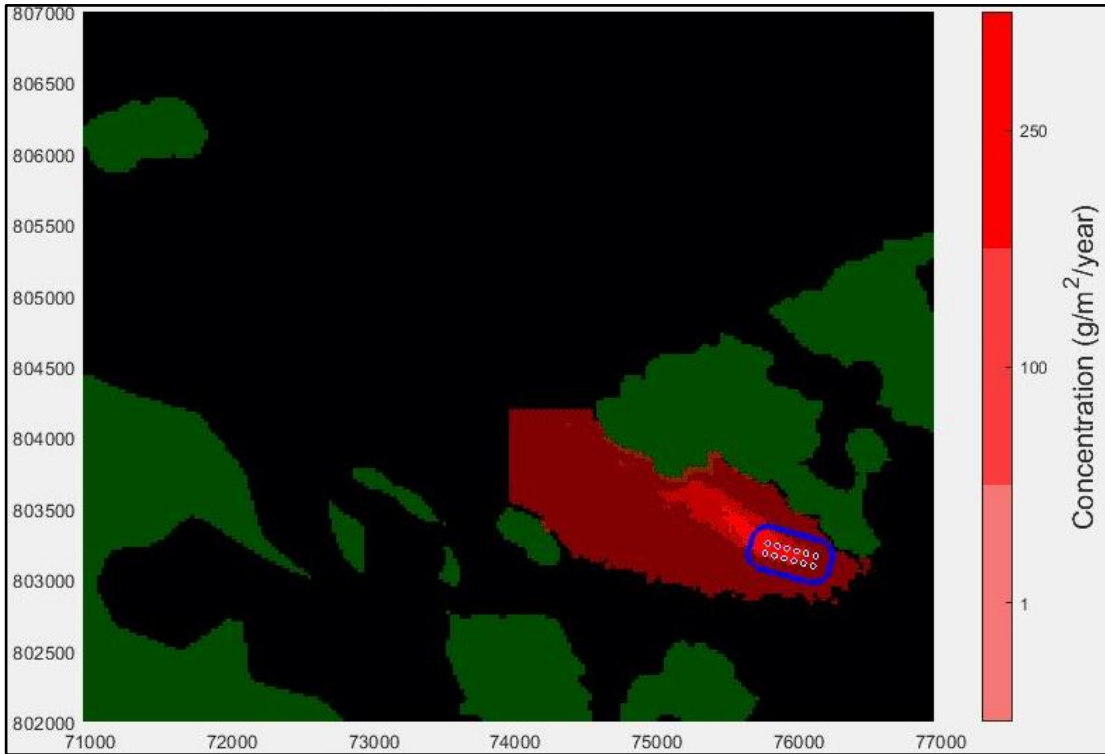


Figure 9: NewDepomod default run output for the currently licenced farm.

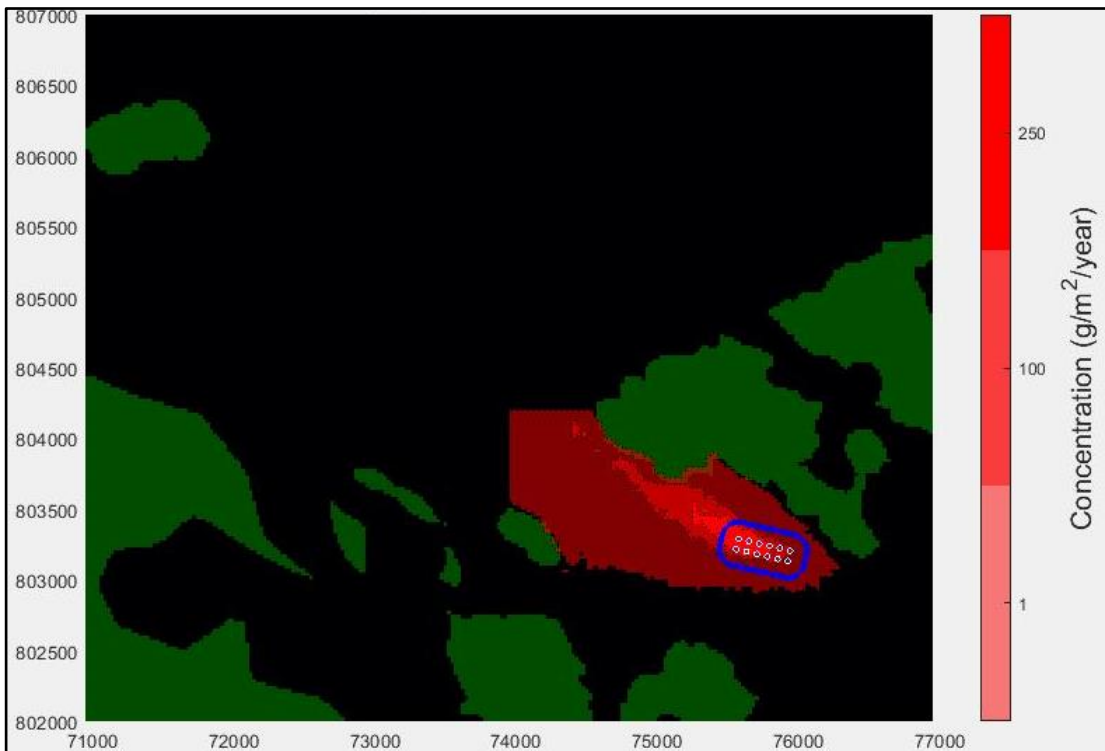


Figure 10: NewDepomod default run output for the currently operational farm.

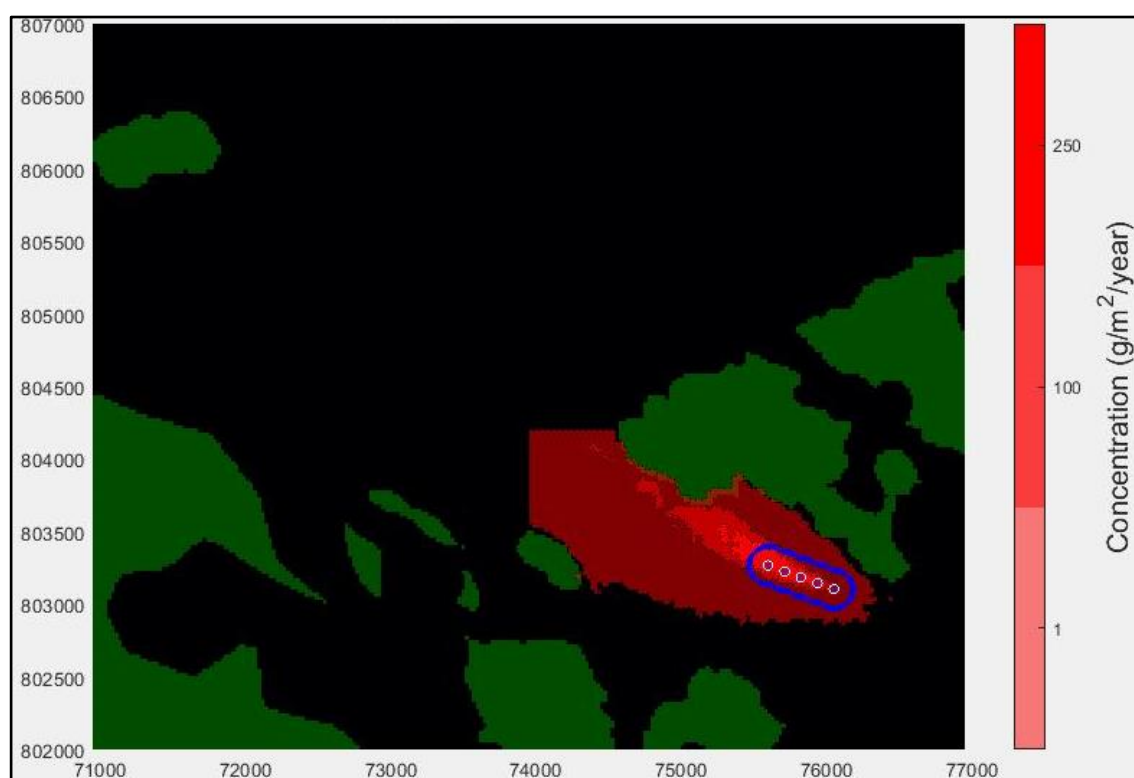


Figure 11: NewDepomod default run output for the proposed farm.

3.4 Risks identified from contextual site data

The 2 most recent compliance surveys of this farm (both under the current pen configuration) passed the pen edge standard. No increase in biomass is being applied for, and the proposed pen layout change as shown by NewDepomod modelling is likely to result in no significant change to the size or intensity of the under-pen impact.

The impact on the maerl in the vicinity of the farm is the main cause for concern with this proposal. This site has been operating in a similar location for 10 years without any downgrading of the SAC. While there is no obvious evidence of loss of maerl in the proximity to the farm, comparison of the percentage cover of maerl patches >5% reported from the 2013, 2016, 2018 and 2020, maerl surveys are required to investigate any potential decline.

Should this application proceed, the total licenced biomass in this area would be 4721.9t.

Table 4: Table of licenced biomass from farms identified as likely to add to cumulative risks.

Site ID	Site Name	Location (Easting, Northing)	Biomass (tonnes)	Last Production Cycle
HEL1	Hellisay	75858, 803190	2150	Proposed Currently stocked (since Apr 21) for

				current biomass of 2150.
ENC1	Eilean na Clarsaich	72390, 802950	80.2	Not used since record begins (2002) Shellfish farm in situ
GIGH1	Gighay	76647, 805607	2400	Not used since record begins (2002)
RCN1	Rubha Charnain	72540, 802510	91.7	Not used since record begins (2002) Shellfish farm in situ

4 Conclusions of screening modelling and risk identification

Following screening modelling and risk identification we make a number of conclusions and recommendations.

4.1 Conclusions

4.1.1 Screening Modelling

- According to screening modelling, Hellisay (HEL1) is in an area of moderate - high dispersion and has a moderate capacity for erosion of material on the sea bed.
- From sediment and bath treatment modelling:
 - Information presented in section 2 indicates that the relative influence of Hellisay (HEL1) is likely to be lower than other sites for a similar tonnage.
 - The influence on the surrounding sea area from Hellisay (HEL1) is likely to be low.
 - The areas of influence from Hellisay (HEL1), and other sites modelled do not appear to interact.
 - It is likely that discharges of bath medicines from Hellisay (HEL1) will be dispersed to low levels over a large area.
 - The pen layout change at Hellisay (HEL1) is likely to result in no increase in the total influence of all sites modelled.
- The moderate - high dispersion nature of the waters surrounding the site, and the relatively low biomass proposed at this site means nutrient discharges from Hellisay (HEL1) are unlikely to have a strong influence on the surrounding sea area.

4.1.2 Risk identification

While the modelled influence on the wider environment from Hellisay (HEL1) appears to be low, screening model resolution in this area is low, and the maerl in the vicinity of the farm has been identified as at risk from solids. Therefore, marine modelling of solids will be required, to ensure the risk of any increase in impact to the maerl is not significant

The modelled bath influence does not appear to impact areas with records of features of interest, and this site has already operated in this area previously. Therefore, unless a bath medicine quantity, greater than that allowed through the conservative BathAuto, is required, marine modelling of bath medicines will not be required for this site.

4.2 Recommendations

4.2.1 Site suitability

Consideration of screening modelling and risk identification suggests that it is possible that discharges from the proposed site will be able to comply with the relevant aspects of the SEPA Aquaculture Regulatory Framework.

NewDepomod modelling provided demonstrates that the site will be able to comply with our mixing zone regulatory framework.

Features at risk, identified at this stage, do not appear to influence the feasibility of the proposed site, with respect to the regulatory framework. These risks should be examined using a detailed marine model.

Following the engagement meeting(s), this report will be revised and this should allow to the applicant to submit a method statement which address the issues raised in this document.

4.2.2 Further modelling

- Due to being situated within an SAC, marine modelling of solids is required for this site.
- Unless a bath medicine quantity, greater than that allowed through the conservative BathAuto, is required, marine modelling of baths will not be required for this site.
- Due to the lack of proximity with other sites, the marine model does not need to include cumulative impacts from the other sites identified in this screening report.
- The resolution of the marine model should be relatively fine around the site and identified features at risk.
- NewDepomod modelling has been undertaken for the proposed modification to this site.
- A comparison of the percentage cover of maerl patches >5% reported from the 2013, 2016, 2018 and 2020 maerl surveys will also be required as part of this application.

5 References

- [1] *Regulatory Modelling Guidance For The Aquaculture Sector. Published on SEPA website..*
- [2] <http://marine.gov.scot/information/wider-domain-scottish-shelf-model>.