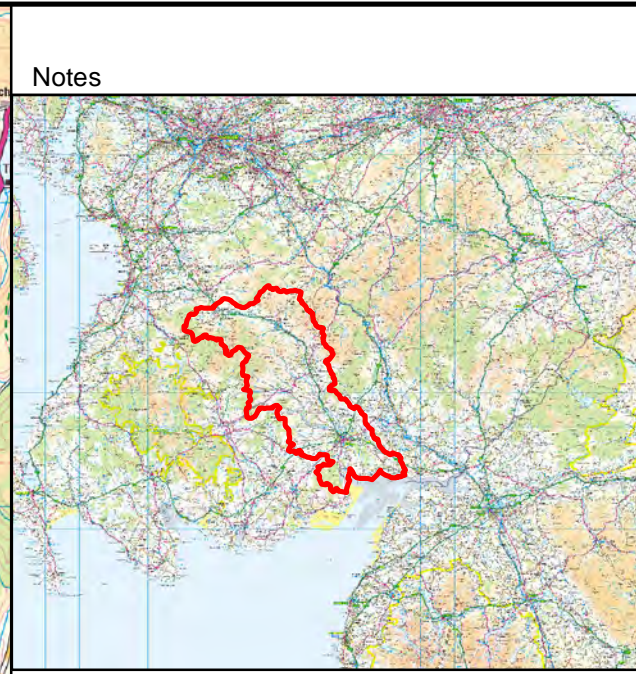
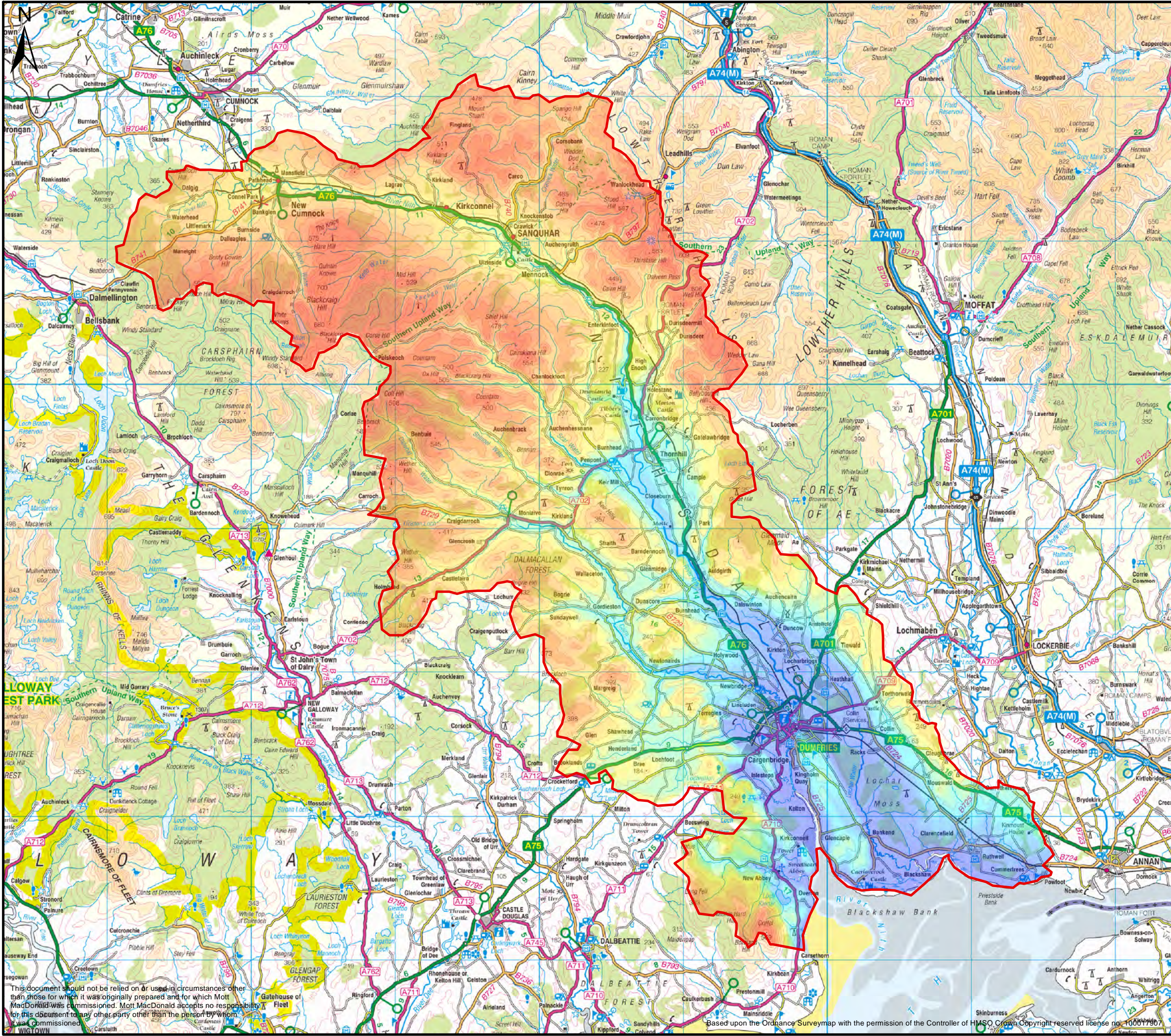


APPENDIX G

Maps of catchment characteristics used in NFM assessment



Notes

Legend

- Gauging Stations
- Raingauges
- High WFD Classification
- Good WFD Classification
- Moderate WFD Classification
- Poor WFD Classification
- Bad WFD Classification
- Poor Ecological Potential WFD Classification
- Catchment Boundary

DTM (meters)

500

300

150

50

-0.051

1 Atlantic Quay
Broomfield
Glasgow
G2 8JB
United Kingdom
Tel +44 (0)141 222 4500
Web www.mottmac.com

Client

Title

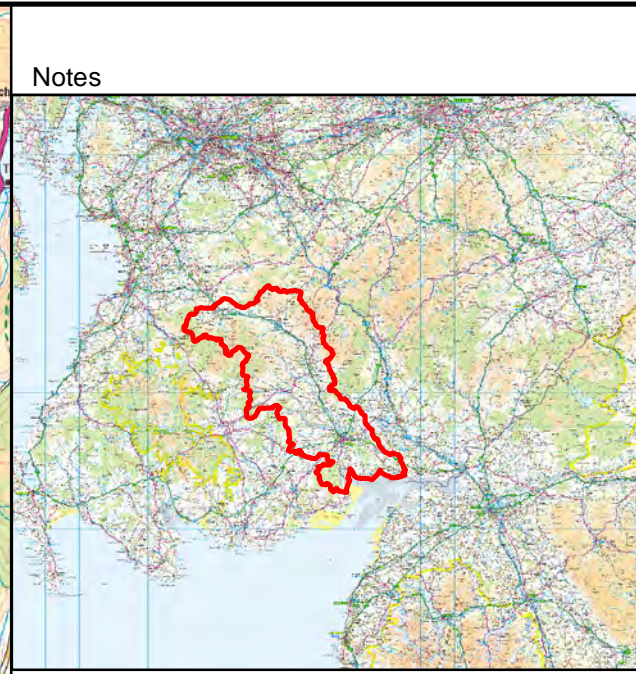
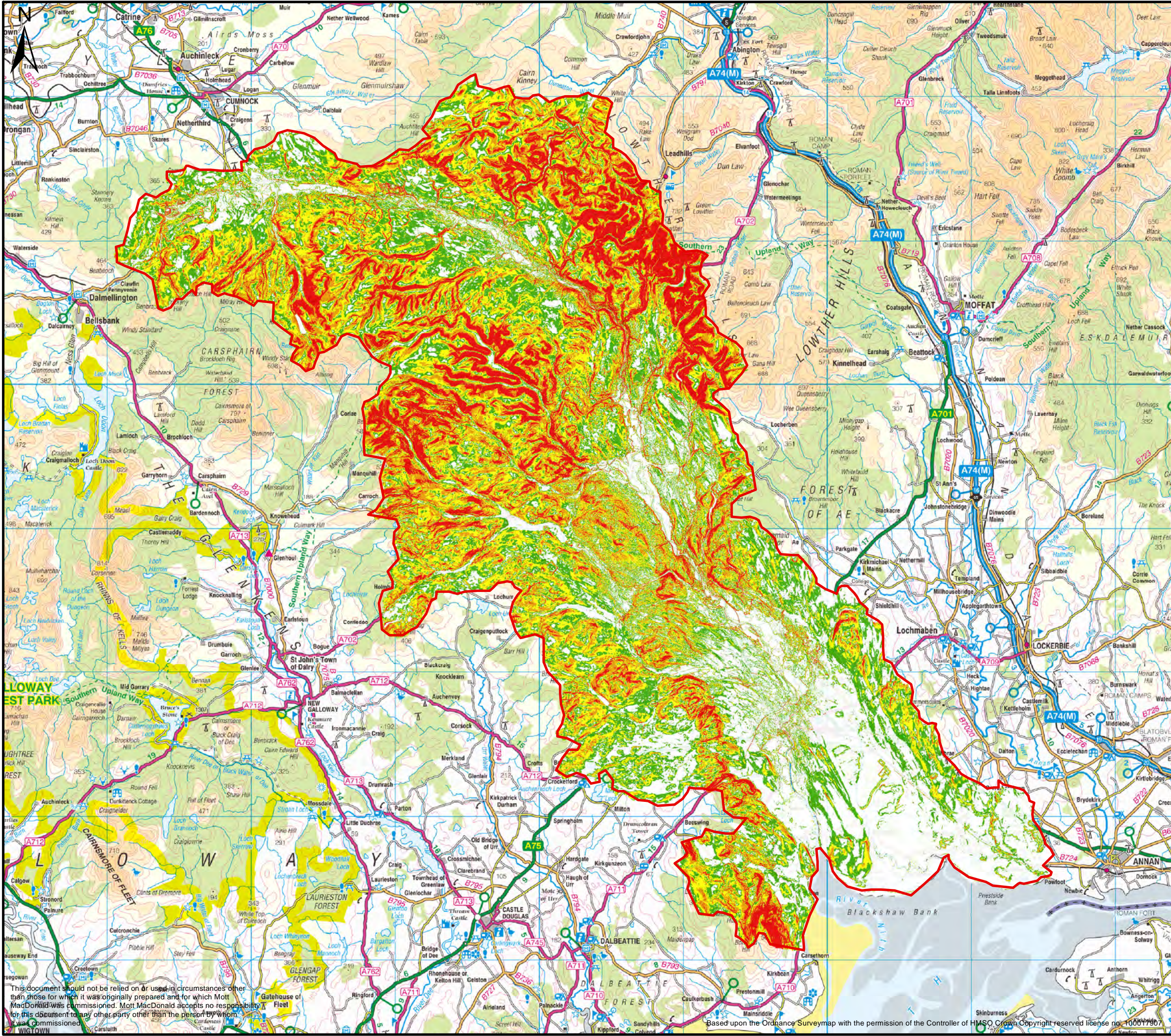
Nith River Restoration

Figure G.1 Hydrometry & Elevation Map

Drawn	AR	Co-ord.	N/A
Dwg. Chk.	JL	Approved	TJ
Scale at A3	1:250,000		Status
Dwg No.	MMD-318688-NR-GIS-001		Rev
			01

This document should not be relied on or used in circumstances other than those for which it was originally prepared and for which Mott MacDonald was commissioned. Mott MacDonald accepts no responsibility for this document to any other party other than the person by whom it was commissioned.

Based upon the Ordnance Survey map with the permission of the Controller of HMSO. Crown Copyright reserved license no. 100017907



Notes

Legend

Slope Angle Distribution

- 0° - 3°
- 3° - 6°
- 6° - 10°
- 10° - 15°
- > 15°
- Catchment Boundary

1 Atlantic Quay
Broomfield
Glasgow
G2 8JB
United Kingdom
Tel +44 (0)141 222 4500
Web www.mottmac.com

Client

Title

Nith River Restoration

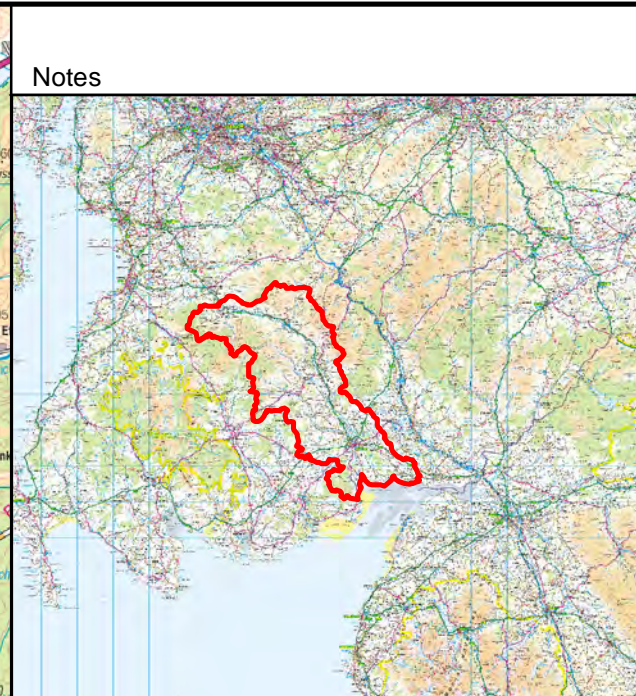
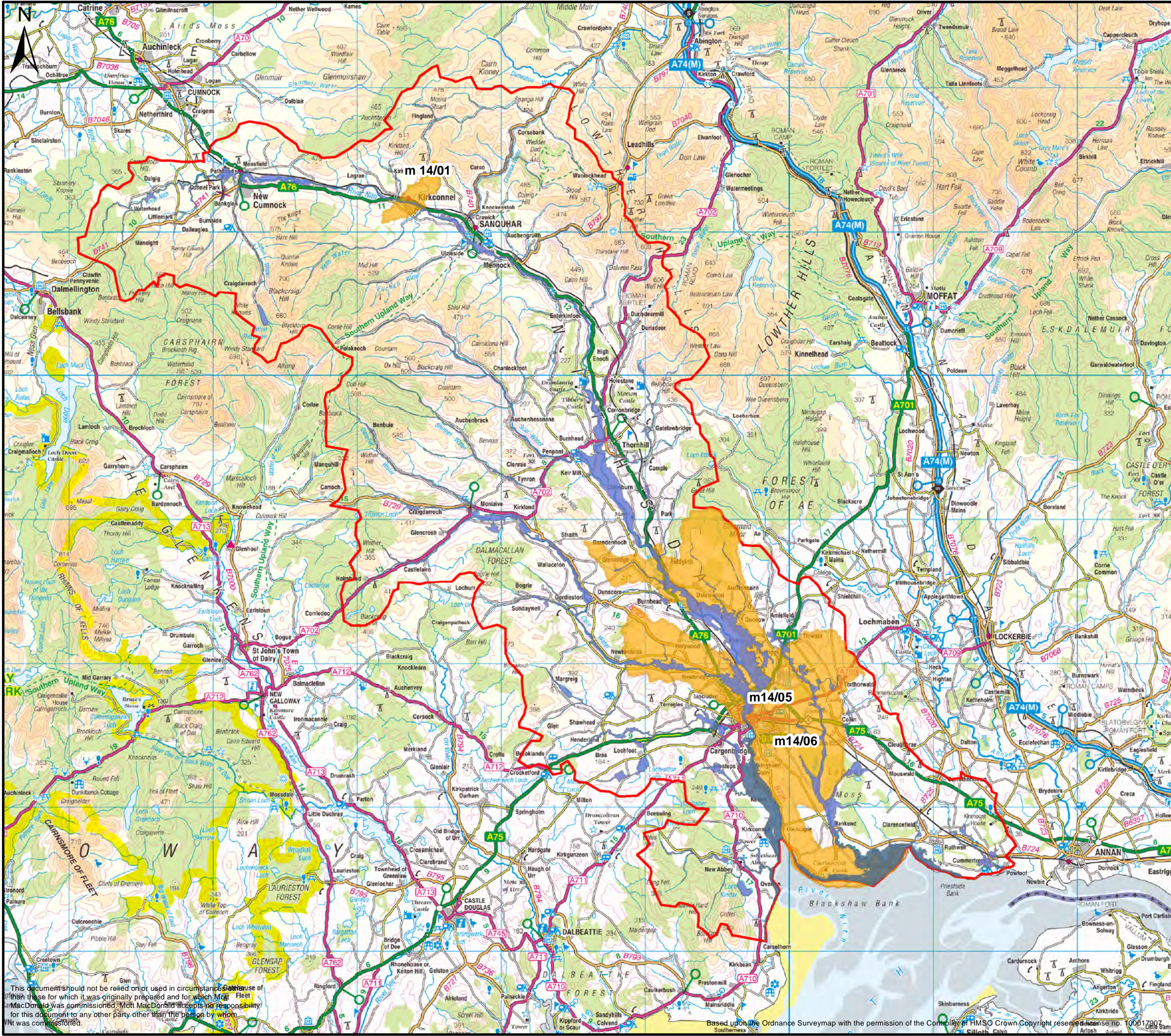
Figure G.2

Slope Map

Drawn	AR	Co-ord.	N/A
Dwg. Chk.	JL	Approved	TJ
Scale at A3	1:250,000	Status	INF
Dwg No.	MMD-318688-NR-GIS-002	Rev	01

This document should not be relied on or used in circumstances other than those for which it was originally prepared and for which Mott MacDonald was commissioned. Mott MacDonald accepts no responsibility for this document to any other party other than the person by whom it was commissioned.

Based upon the Ordnance Survey map with the permission of the Controller of HMSO. Crown Copyright reserved license no. 100017907



Notes

Legend

- Fluvial Flood Outline 200 yr
- Coastal Flood Outline 200 yr
- PVAs
- Catchment Boundary



Client

Title

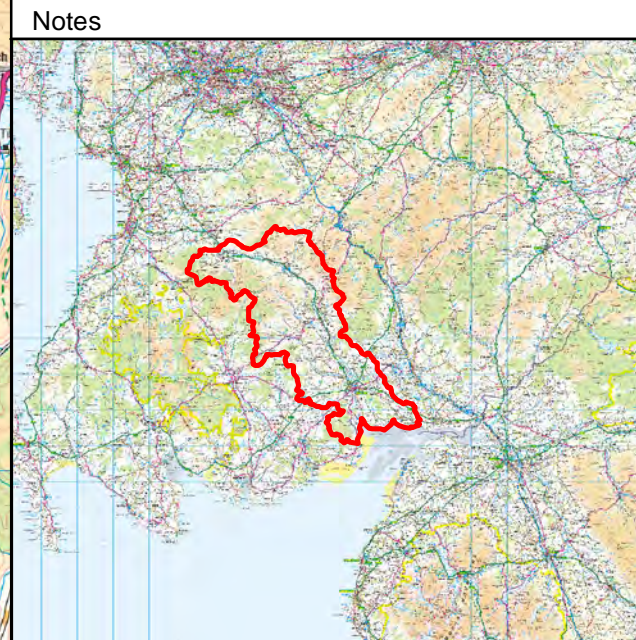
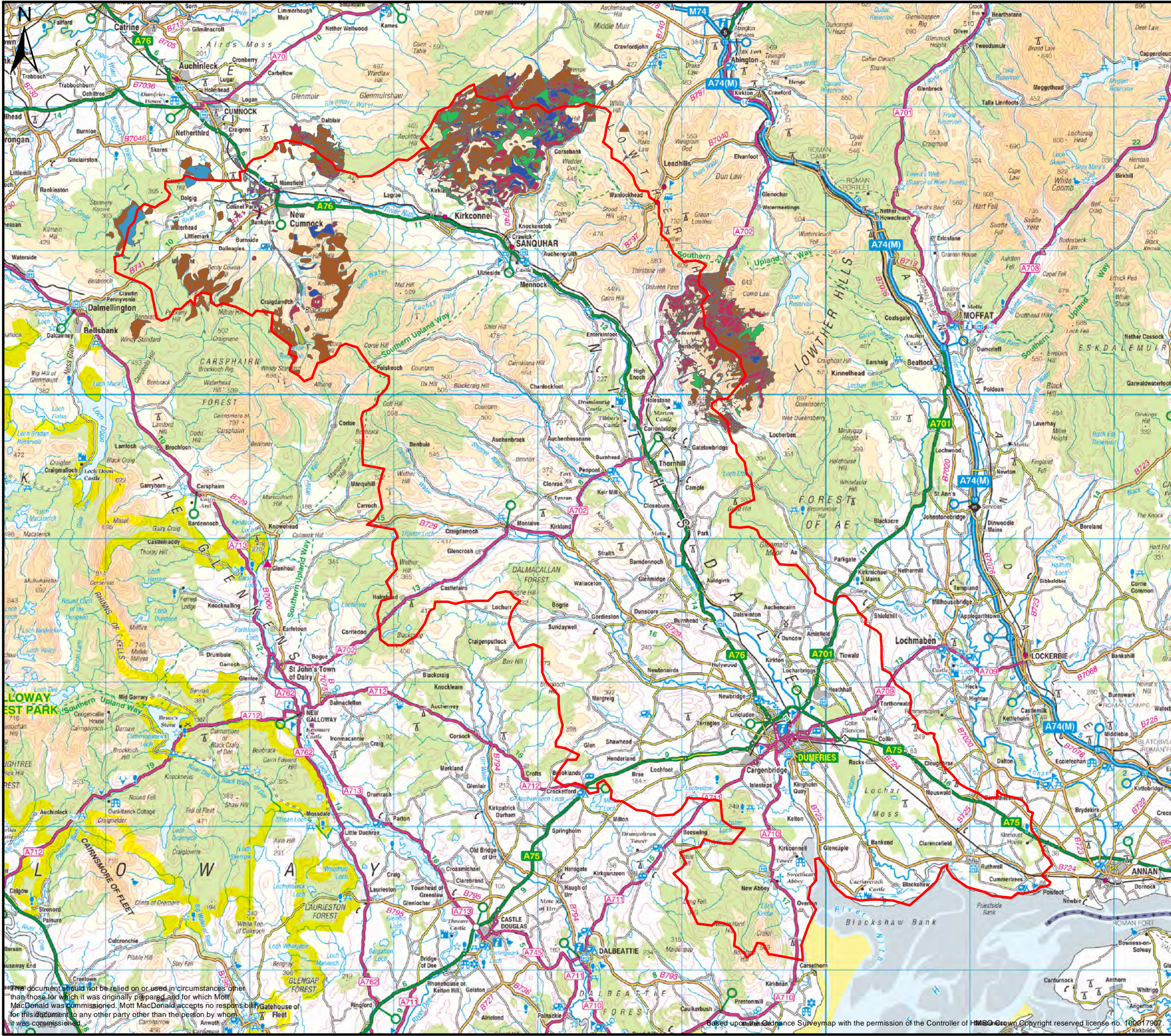
Nith River Restoration

Figure G.3 Indicative Flood Map

Drawn	AR	Co-ord.	
Dwg. Chk.	JL	Approved	TJ
Scale at A3	1:250,000		Status
Dwg No.	MMD-318688-NR-GIS-003		INF
			Rev
			01

This document should not be relied on or used in circumstances other than those for which it was originally prepared and for which Mott MacDonald was commissioned. Mott MacDonald accepts no responsibility for this document to any other party other than the person by whom it was commissioned.

Based upon the Ordnance Survey map with the permission of the Controller of HMSO Crown Copyright reserved. License no. 100017907



Notes

Legend

- Fen
- Non-Specific Wetland
- Peat Bog
- Springs, flushes and seepages
- Swamp
- Wet Grassland
- Wet Heath
- Wet Woodland
- Catchment Boundary



Client

Title

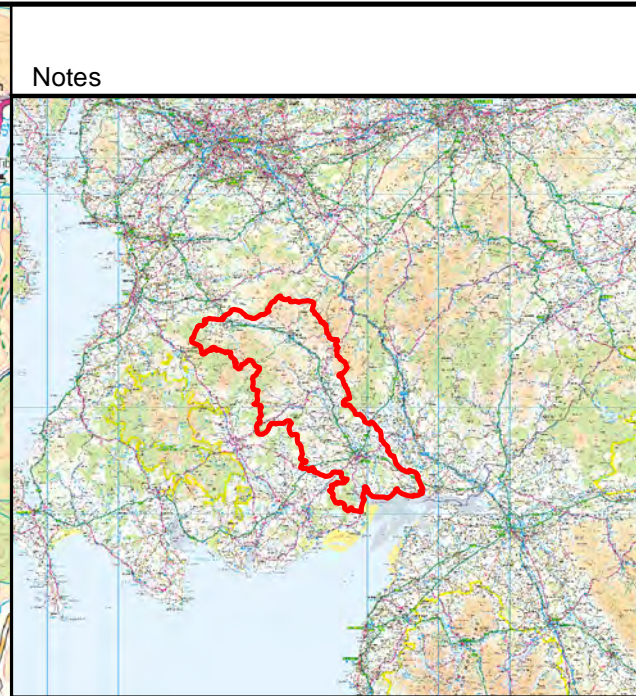
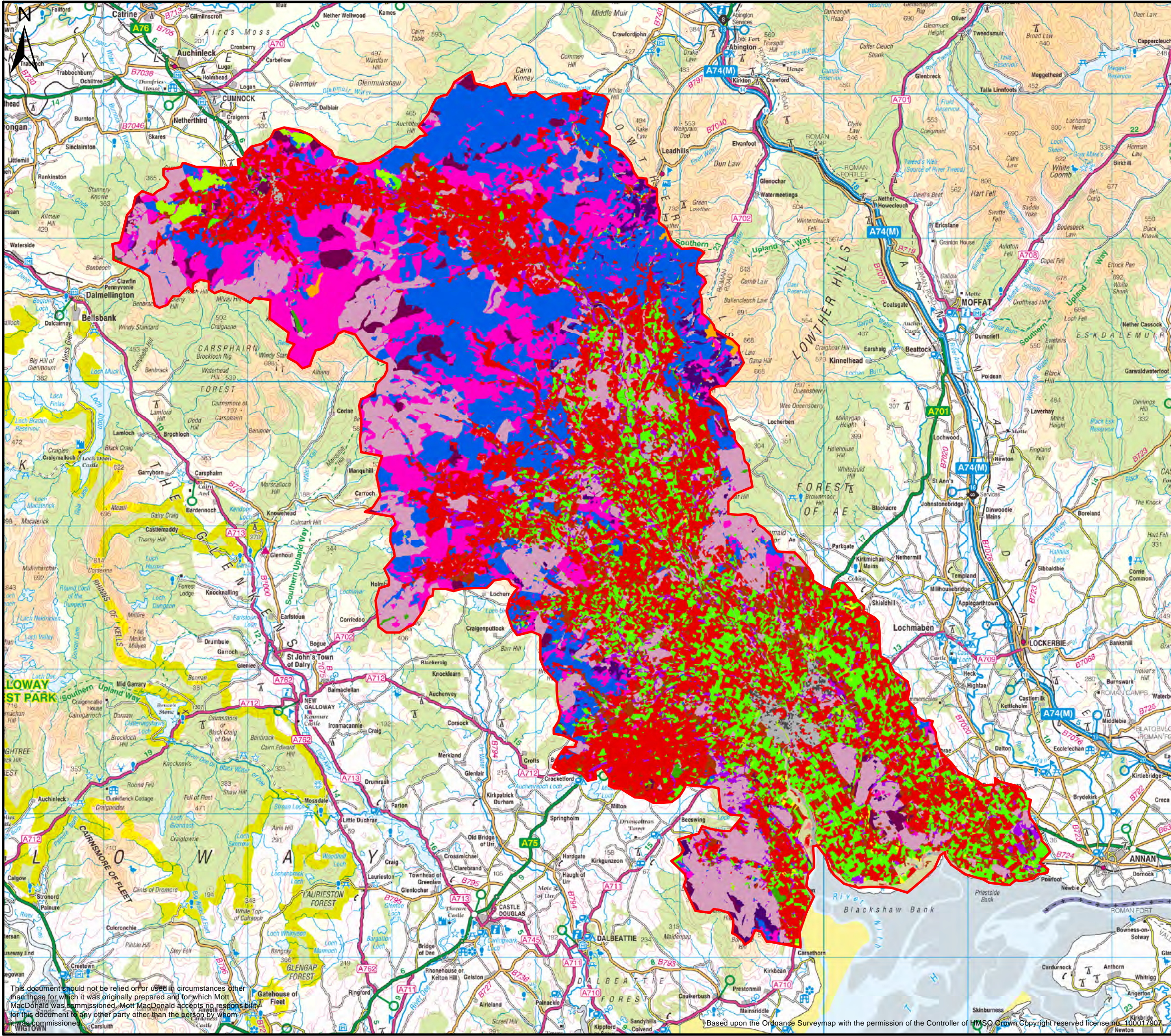
Nith River Restoration

Figure G.4 Wetlands Map

Drawn	AR	Co-ord.	
Dwg. Chk.	JL	Approved	TJ
Scale at A3	1:250,000		Status
Dwg No.	MMD-318688-NR-GIS-004		INF
			Rev
			01

This document should not be relied on or used in circumstances other than those for which it was originally prepared and for which Mott MacDonald was commissioned. Mott MacDonald accepts no responsibility for this document to any other party other than the person by whom it was commissioned.

Based upon the Ordnance Survey map with the permission of the Controller of HMSO Crown Copyright reserved license no. 100017907



Legend

Aggregate Class	(%)
Acid grassland	17.06
Arable and Horticulture	11.03
Bog	2.01
Broadleaved woodland	3.71
Coniferous Woodland	15.70
Fen, Marsh and Swamp	0.001
Freshwater	0.30
Heather	1.23
Heather grassland	12.75
Improved Grassland	28.23
Inland Rock	0.87
Littoral Rock	0.06
Littoral sediment	0.17
Montane Habitats	0.16
Neutral Grassland	0.14
Rough grassland	4.87
Saltmarsh	0.52
Saltwater	0.001
Suburban	0.93
Supra-littoral Sediment	0.07
Urban	0.25
Catchment Boundary	



Title

Nith River Restoration

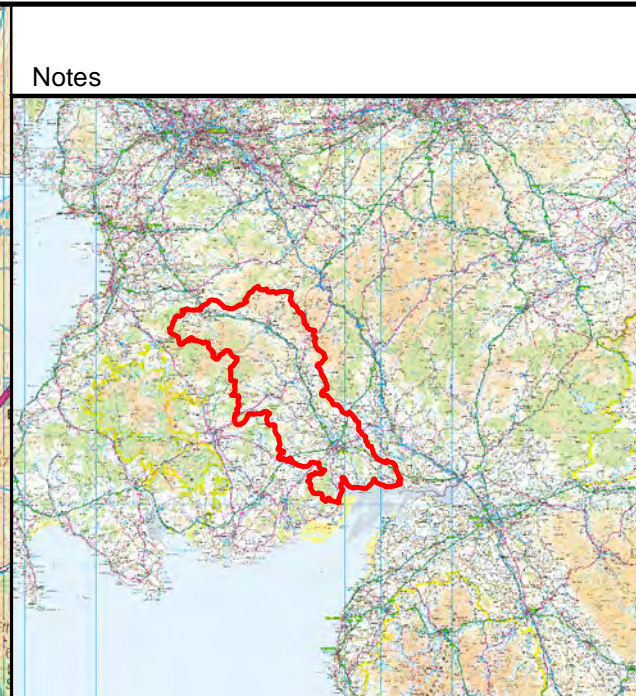
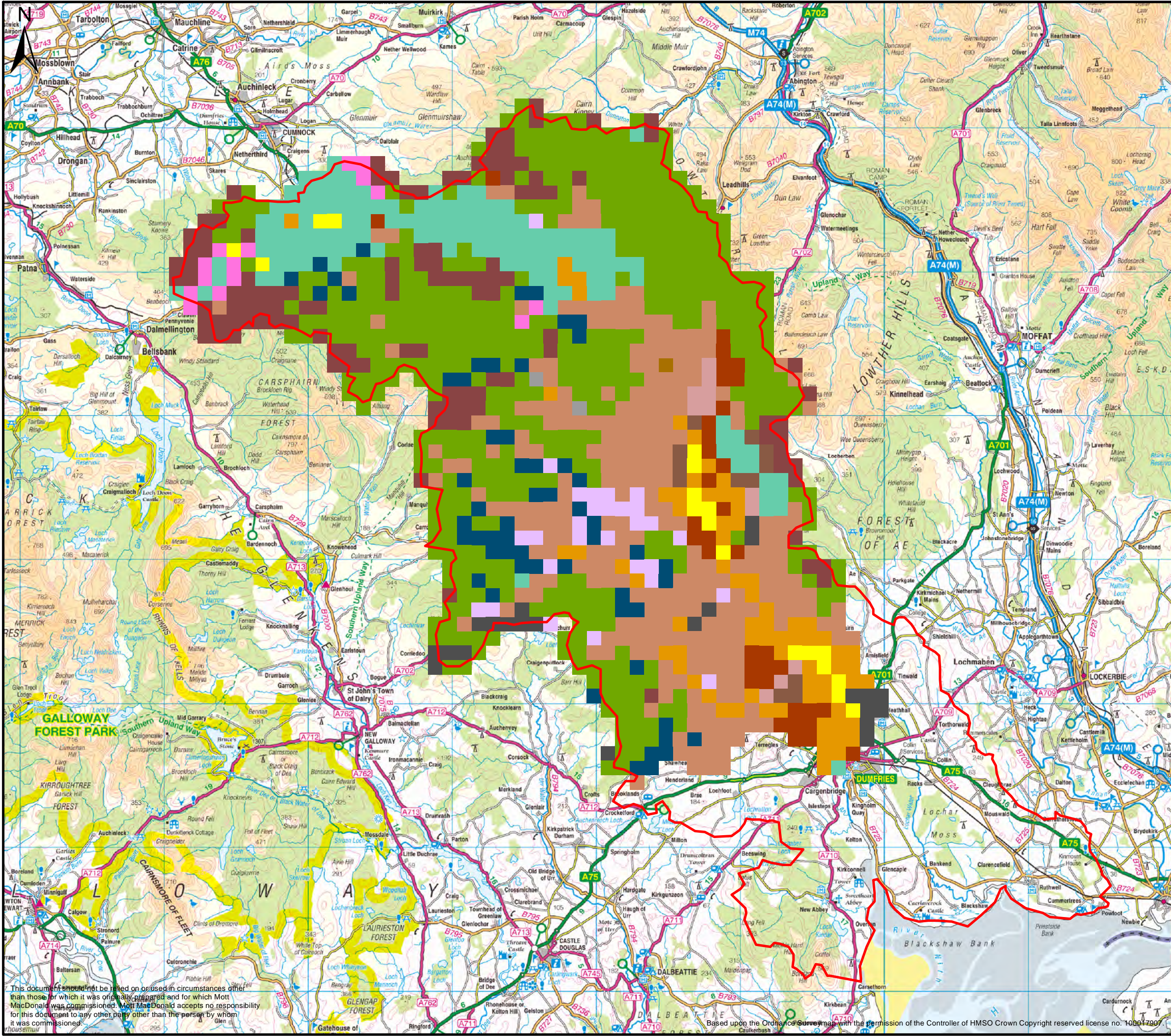
Figure G.5

Land Cover Map

Drawn	AR	Co-ord.	N/A	
Dwg. Chk.	JL	Approved	TJ	
Scale at A3	1:250,000			Status
Dwg No.	MMD-318688-NR-GIS-005			INF
				Rev
				01

This document should not be relied upon or used in circumstances other than those for which it was originally prepared and for which Mott MacDonald was commissioned. Mott MacDonald accepts no responsibility for this document to any other party other than the person by whom it was commissioned.

Based upon the Ordnance Survey map with the permission of the Controller of HMSO. Crown Copyright reserved license no. 100017907



Notes

Legend

Dominate Soils Types	(%)
Peaty gleys (wetness class V to VI)	0.08
Blanket peats (organic soils) often more than 1 metre deep	0.16
Freely drained (wetness class I) brown earths, humus-iron podzols, brown and podzolic rankers, brown rendzinas and lithols. They are often shallow	0.88
Freely drained brown earths, humus-iron podzols, subalpine soils and alpine soils (arctic soils)	0.96
Freely drained brown earths, humus-iron podzols, subalpine soils, some brown magnesian soils and alpine soils	1.20
Mineral non-calcareous gley soils with wetness class II to III	1.44
Freely drained brown earths and humus-iron podzols (wetness class I)	1.76
Poorly drained mineral non-calcareous gleys and humic gleys (wetness class IV) often associated with flushes and spring lines	2.24
Brown rankers, podzolic rankers and lithols	2.88
Weakly gleyed brown earths and humus-iron podzols (wetness class II - III) often with a compact, indurated subsols	5.85
Immature free and imperfectly drained, coarse textured alluvial soils (wetness class I-III)	4.65
Peaty gley, peaty podzols and peaty rankers on porous rock types (wetness class V and VI)	9.29
Non-calcareous mineral gleys with wetness class III or IV	10.58
Freely drained (wetness class I) brown earths and humus-iron podzols with some subalpine podzols	21.39
Semi-confined peats and raised moss peats predominantly peaty gleys, peaty alluvial soils and occasionally peaty podzols (wetness class V-VII)	36.62
Catchment Area	



Title

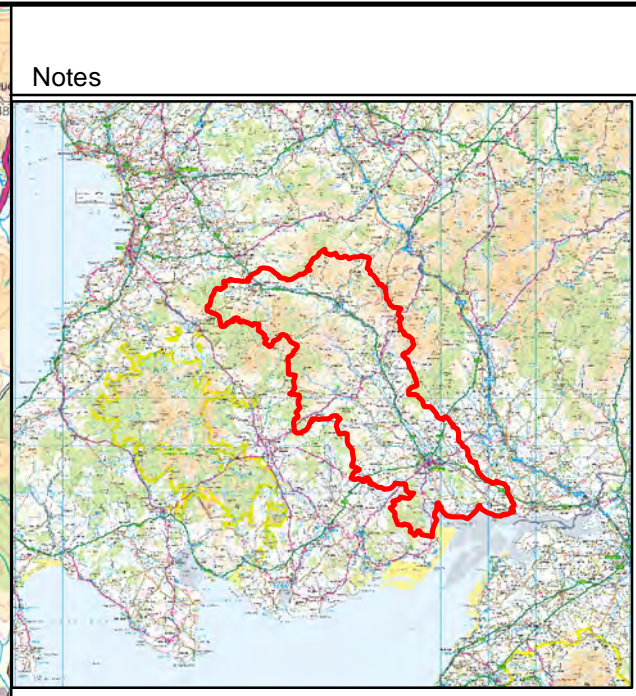
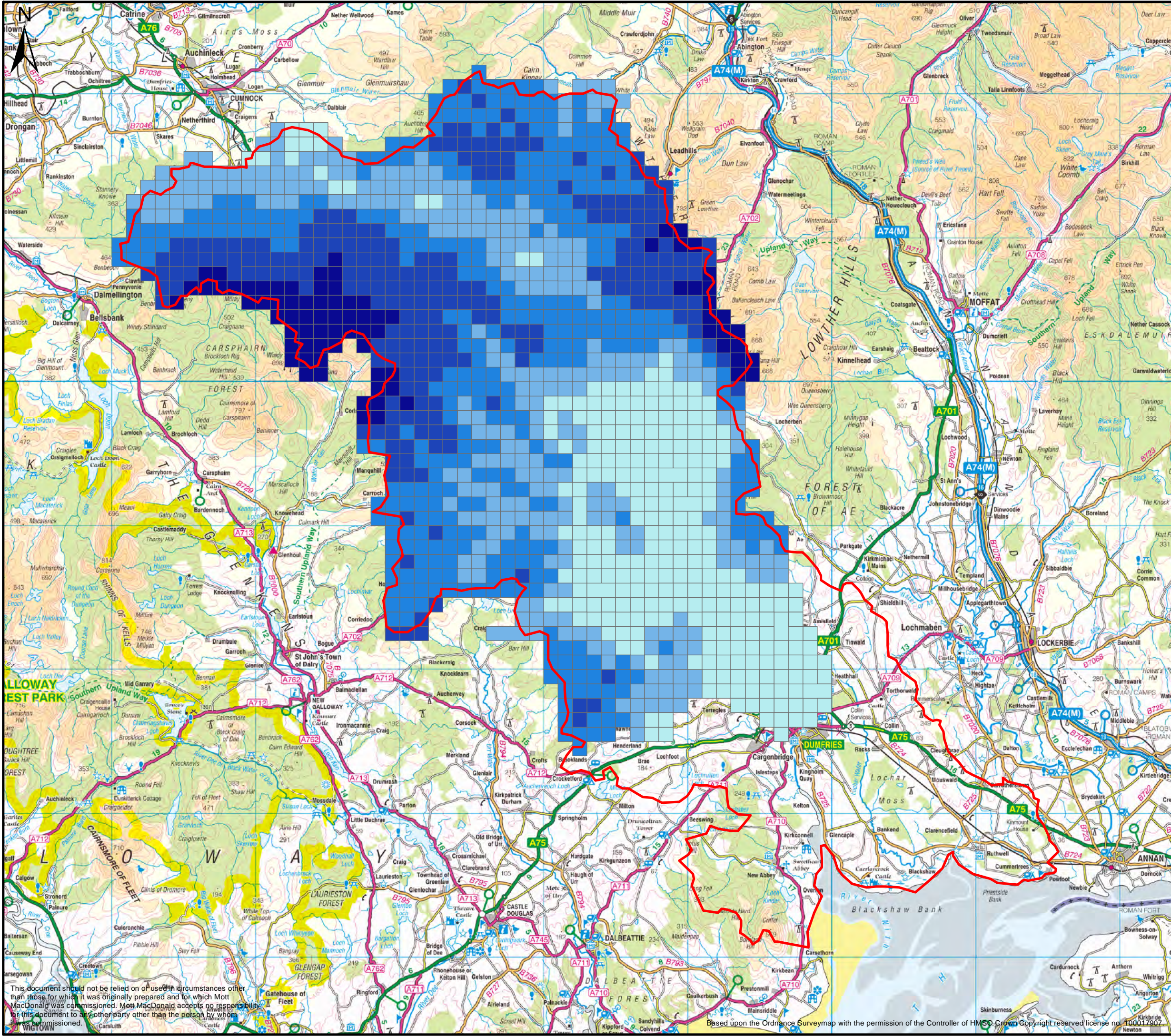
Nith River Restoration

Figure G.6

Soil Map

Drawn	AR	Co-ord.	N/A
Dwg. Chk.	JL	Approved	TJ
Scale at A3	1:250,000	Status	INF
Dwg No.	MMD-318688-NR-GIS-006	Rev	01

This document should not be relied on or used in circumstances other than those for which it was originally prepared and for which Mott MacDonald was commissioned. Mott MacDonald accepts no responsibility for this document to any other party other than the person by whom it was commissioned.



Notes

Legend

Nith Average Annual Rainfall (1961 - 1990)
SAAR_MM

- 1009 - 1300
- 1301 - 1450
- 1451 - 1620
- 1621 - 1880
- 1881 - 2441
- Catchment Boundary

1 Atlantic Quay
Broomfield
Glasgow
G2 8JB
United Kingdom
Tel +44 (0)141 2224500
Web www.mottmac.com

Client

Title

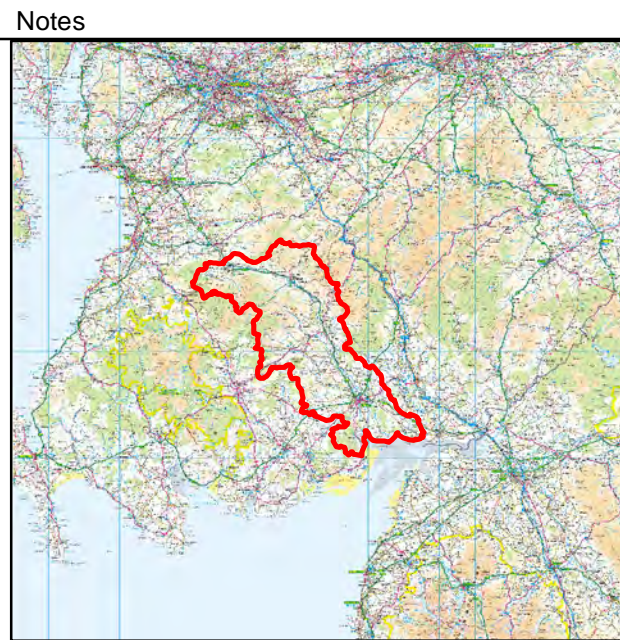
Nith River Restoration

Figure G.7 Spatial Distribution of SAAR

Drawn	AR	Co-ord.	N/A
Dwg. Chk.	JL	Approved	TJ
Scale at A3	1:250,000		Status
Dwg No.	MMD-318688-NR-GIS-007		Rev
			01

This document should not be relied on or used in circumstances other than those for which it was originally prepared and for which Mott MacDonald was commissioned. Mott MacDonald accepts no responsibility for this document to any other party other than the person by whom it was commissioned.

Based upon the Ordnance Survey map with the permission of the Controller of HMSO. Crown Copyright reserved license no. 100017907



Notes

Legend

Aggregate Class	(%)
Acid grassland	2.95
Arable and Horticulture	26.02
Bog	1.36
Broadleaved woodland	5.97
Coniferous Woodland	4.33
Freshwater	4.47
Heather	0.45
Heather grassland	2.54
Improved Grassland	38.37
Inland Rock	1.46
Neutral Grassland	0.37
Rough grassland	10.16
Saltmarsh	0.14
Suburban	1.15
Supra-littoral Sediment	0.01
Urban	0.23
PVAs	
Catchment Boundary	



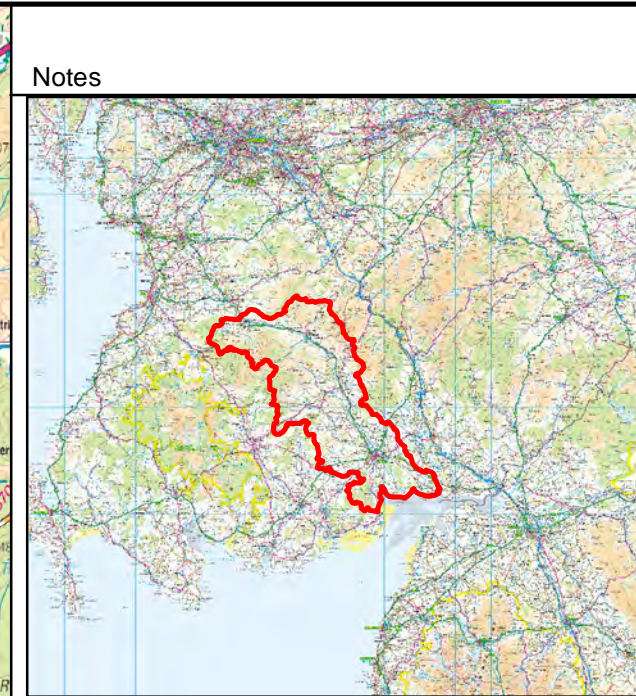
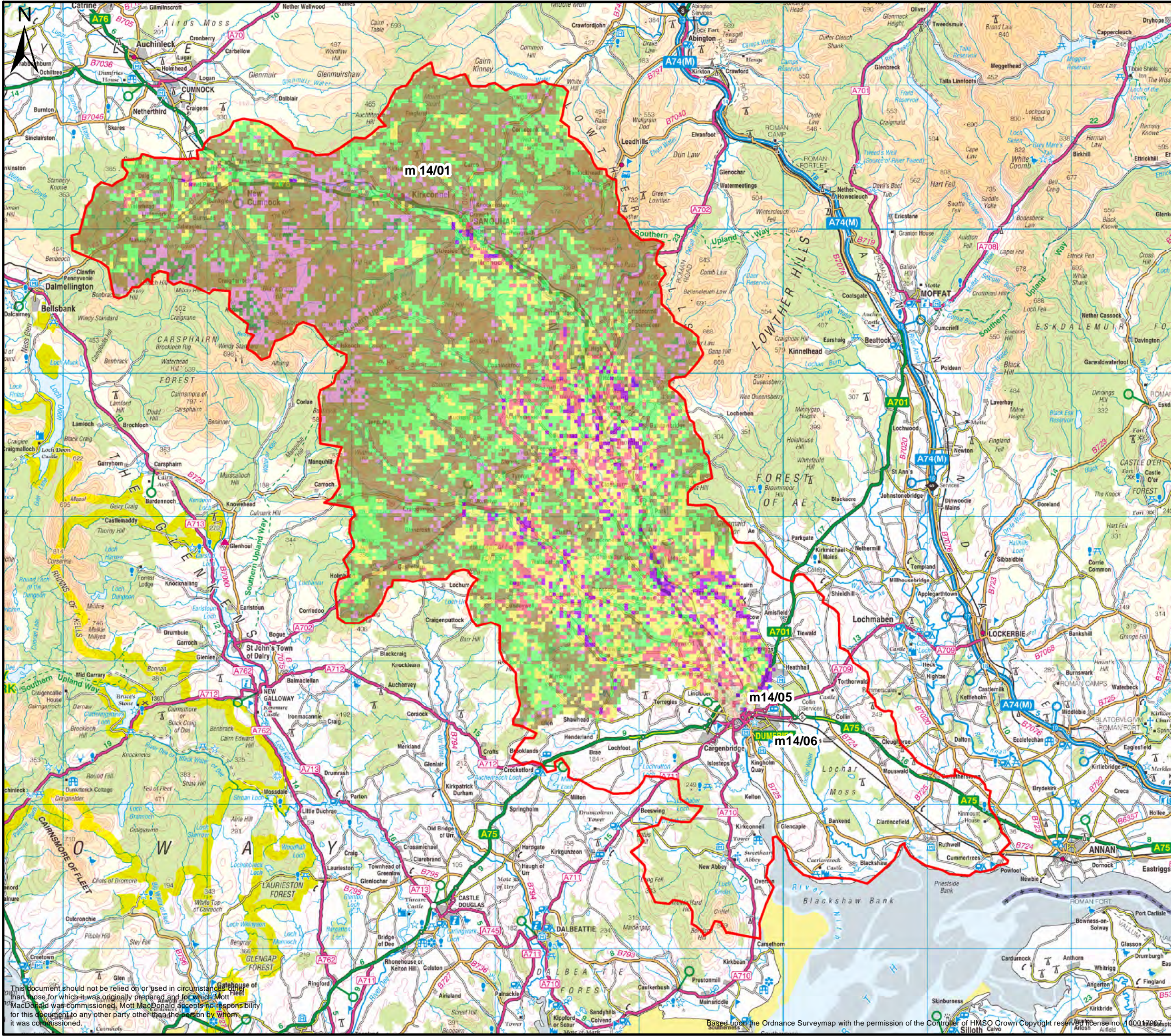
Title

Nith River Restoration
 Figure G.8
 Flood Plain Land Cover Map

Drawn	AR	Co-ord.	N/A
Dwg. Chk.	JL	Approved	TJ
Scale at A3	1:250,000	Status	PRE
Dwg No.	MMD-318688-NR-GIS-008	Rev	01

This document should not be relied on or used in circumstances other than those for which it was originally prepared and for which Mott MacDonald was commissioned. Mott MacDonald accepts no responsibility for this document to any other party other than the person by whom it was commissioned.

Based upon the Ordnance Survey map with the permission of the Controller of HMSO Crown Copyright reserved license no. 100017907



Notes

Legend

Combined Sensitivity

- 1.25
- 1.5
- 1.75
- 2
- 2.25
- 2.5
- 2.75
- 3
- 3.25
- 3.5
- Catchment Boundary



Title

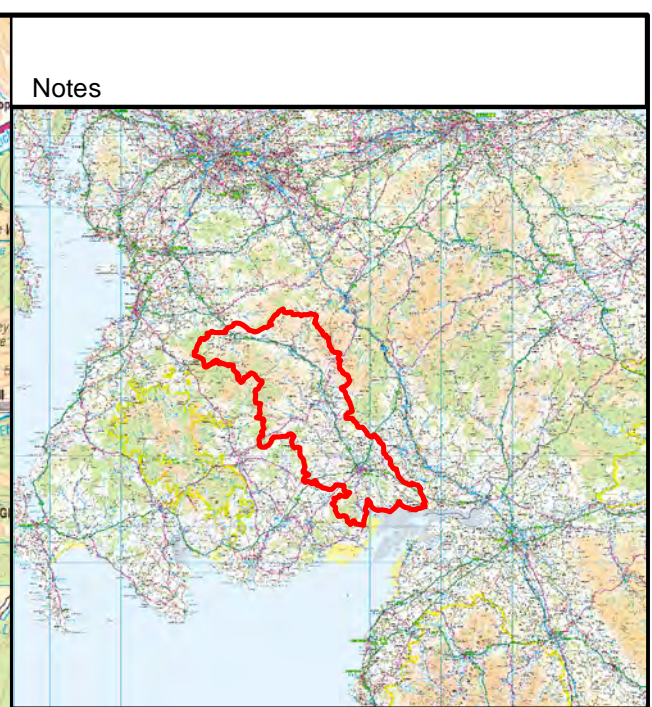
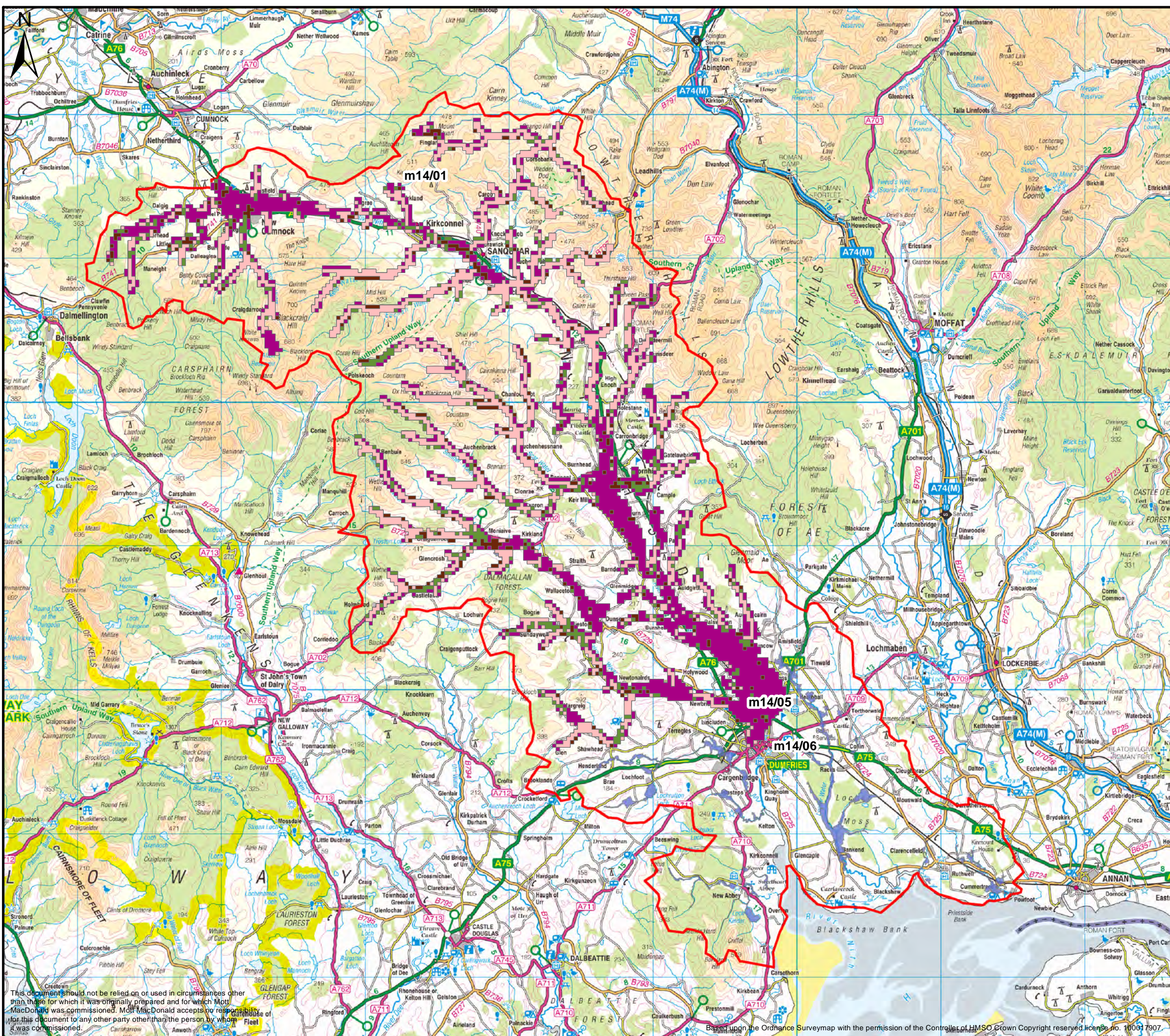
Nith River Restoration

Figure G.9: Screening A

Areas of High Runoff Generation

Drawn	AR	Co-ord.	N/A	
Dwg. Chk.	JL	Approved	TJ	
Scale at A3	1:250,000			Status
Dwg No.	MMD-318688-NR-GIS-009			PRE
				Rev
				01

This document should not be relied on or used in circumstances other than those for which it was originally prepared and for which Mott MacDonald was commissioned. Mott MacDonald accepts no responsibility for this document to any other party other than the person by whom it was commissioned.



Notes

Legend

Slope Screening	(%)
1	16.65
2	19.44
3	17.89
4	46.01
Catchment Boundary	

This document should not be relied on or used in circumstances other than those for which it was originally prepared and for which Mott MacDonald was commissioned. Mott MacDonald accepts no responsibility for this document to any other party other than the person by whom it was commissioned.

Based upon the Ordnance Survey map with the permission of the Controller of HMSO Crown Copyright reserved license no. 100017907



1 Atlantic Quay
Broomfield
Glasgow
G2 8JB
United Kingdom
Tel +44 (0)141 2224500
Web www.mottmac.com

Client

Title

Nith River Restoration Figure G.10: Screening B Floodplain Storage Potential Slope Screening

Drawn	AR	Co-ord.	N/A
Dwg. Chk.	JL	Approved	TJ
Scale at A3	1:250,000		Status
Dwg No.	MMD-318688-NR-GIS-010		PRE
			Rev
			01