

Rural Diffuse Pollution: Reprioritisation of catchments

Brian McCreadie, SEPA Senior Environment
Quality Officer (Diffuse Pollution)

Why Reprioritise?

Previous Prioritisation considerations

	Prioritisation Factors
"MUST DO" PRIORITISATION CRITERIA	Bathing Waters
	Declining Natura Sites
	WFD deterioration (surface waters)
	WFD deterioration (groundwaters)
	Prioritisation Factors
SECONDARY PRIORITISATION CRITERIA	Public Drinking Water Supply (river catchments)
	WFD Ecology Impact (waterbodies)
	WFD Groundwater Impact (waterbodies)
	Unfavourable Natura Sites
	Priority Shellfish Waters
	Other impacted shellfish waters

Why Reprioritise?

Significant Changes to Impact Assessment

	Prioritisation Factors
"MUST DO" PRIORITISATION CRITERIA	Bathing Waters
	Declining Natura Sites
	WFD deterioration (surface waters)
	WFD deterioration (groundwaters)
	Prioritisation Factors
SECONDARY PRIORITISATION CRITERIA	Public Drinking Water Supply (river catchments)
	WFD Ecology Impact (waterbodies)
	WFD Groundwater Impact (waterbodies)
	Unfavourable Natura Sites
	Priority Shellfish Waters
	Other impacted shellfish waters

Primary Drivers for Reprioritisation

- **The 2013 WFD classification** is now available and shows a marked difference in ecological impacts compared to the WFD 2011 classification previously used for prioritisation. The primary reason for this change is the revision in standards for diatoms and macroinvertebrates.
- **Shellfish Waters** have been reassessed using a new classification methodology (2013) and a total of 53 shellfish waters now identified to be at less than good status. Of these, 14 are a priority for measures due to increased risk to oyster production.

Why Reprioritise?

Opportunities to improve strategic approach

	Prioritisation Factors
"MUST DO" PRIORITISATION CRITERIA	Bathing Waters
	Declining Natura Sites
	WFD deterioration (surface waters)
	WFD deterioration (groundwaters)
	Prioritisation Factors
SECONDARY PRIORITISATION CRITERIA	Public Drinking Water Supply (river catchments)
	WFD Ecology Impact (waterbodies)
	WFD Groundwater Impact (waterbodies)
	Unfavourable Natura Sites
	Priority Shellfish Waters
	Other impacted shellfish waters

Why Reprioritise?

Opportunities to improve strategic approach - Grouping



Original PC Scenarios

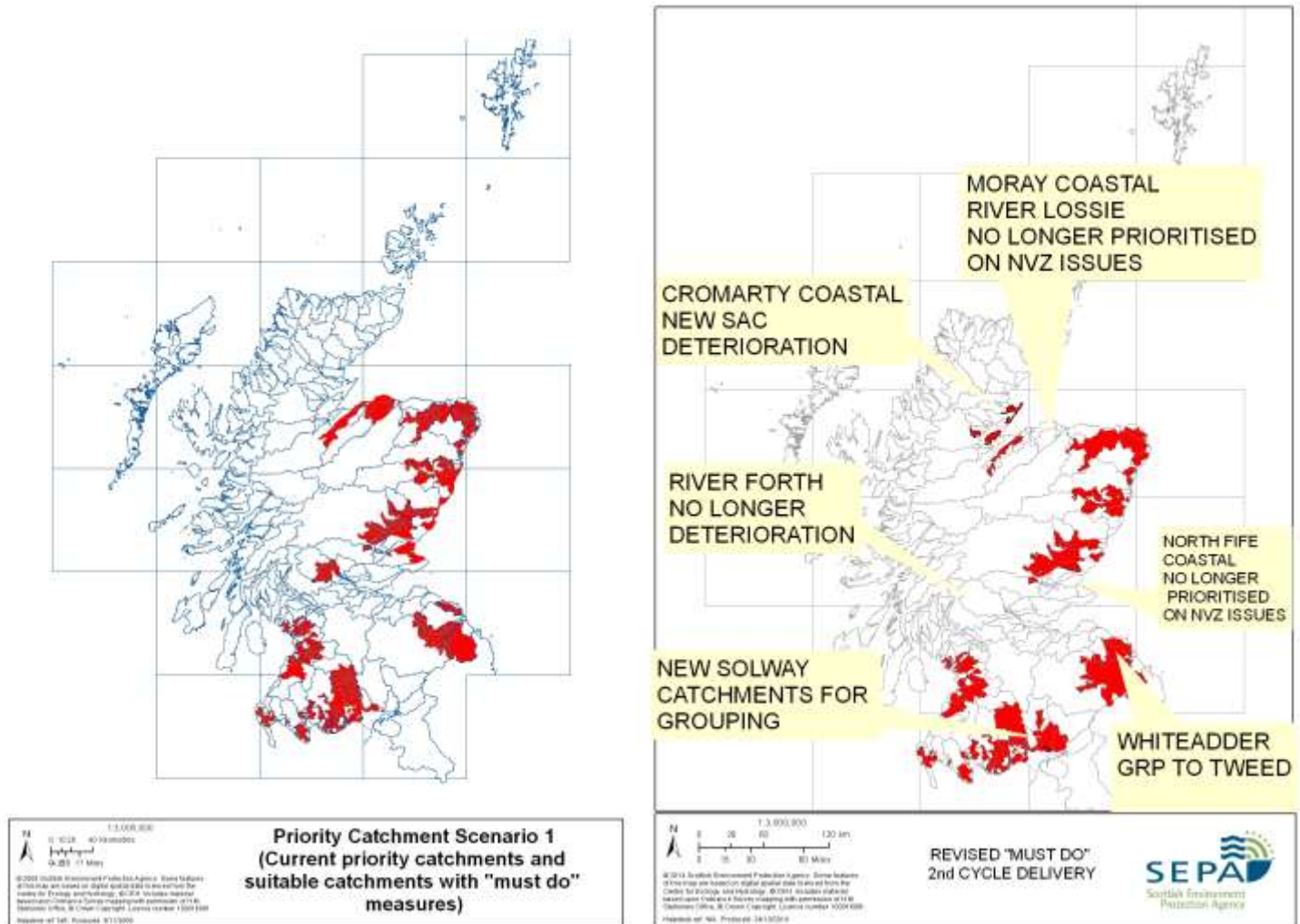
	Scenario 1	Scenario 2	Scenario 3
Criteria	Current PC (14)	Current PC (14)	Current PC (14)
Criteria	catchments with "must do" measures (15)	catchments with "must do" measures (15)	catchments with "must do" measures (15)
Criteria		High priority catchments (14)	High priority catchments (14)
Criteria			Remaining catchments suitable for PC approach (16)
Total Number of main catchments in each scenario	30	43	59

Revised PC Scenarios

	Scenario 1	Scenario 2	Scenario 3
	↓	↓	↓
	"MINIMUM SCENARIO" 2nd cycle delivery	"MEDIUM SCENARIO" 2nd cycle delivery	"MAXIMUM SCENARIO" 2nd cycle delivery
Criteria	Current PC (14)	Current PC (14)	Current PC (14)
Criteria	catchments with "must do" measures (15)	catchments with "must do" measures (15)	catchments with "must do" measures (15)
Criteria		High priority catchments (14)	High priority catchments (14)
Criteria			Remaining catchments suitable for PC approach (14)
Total Number of main catchments in each scenario	30	43	57

Changes to PC Scenario 1

Current PC and “Must Do” catchments



Rural diffuse pollution

Baseline scenario

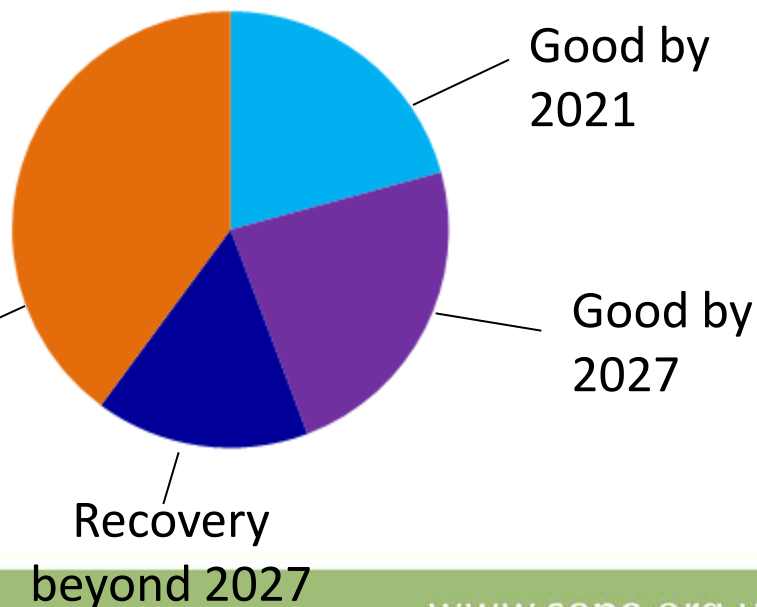
- Roll forward existing programme – no step change in approach
- 15 of priority catchments left until after 2027
- No work in action areas

Period	2 nd cycle	3 rd cycle	Post 2027
New start priority catchments	15	14	14
New start action areas	0	0	0

Over 360 water bodies affected

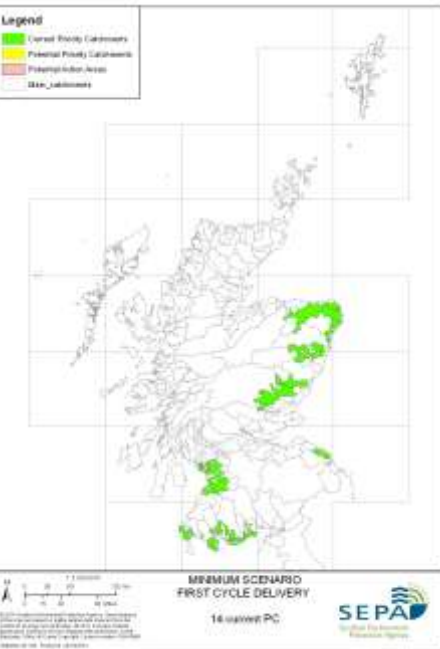
Based on all pollution reduction measures, including for point sources

Need to justify non-delivery: less stringent objective

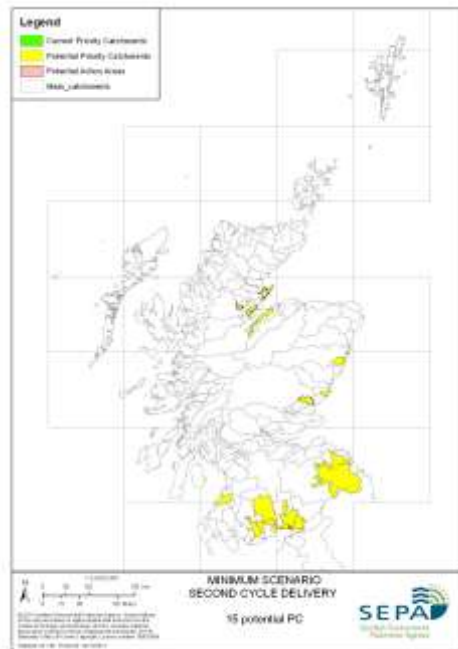


REVISED MINIMUM SCENARIO (baseline scenario)

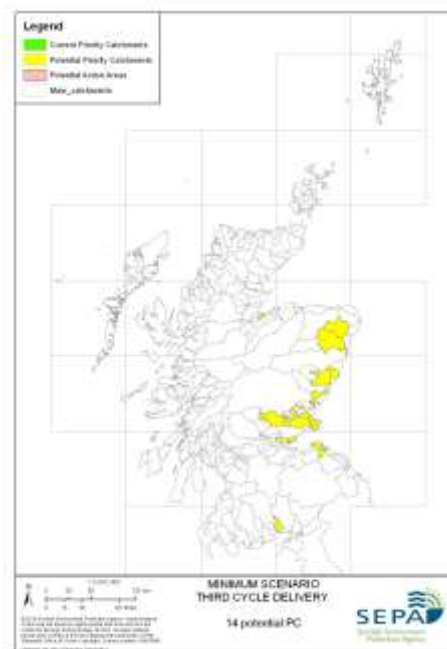
FIRST CYCLE



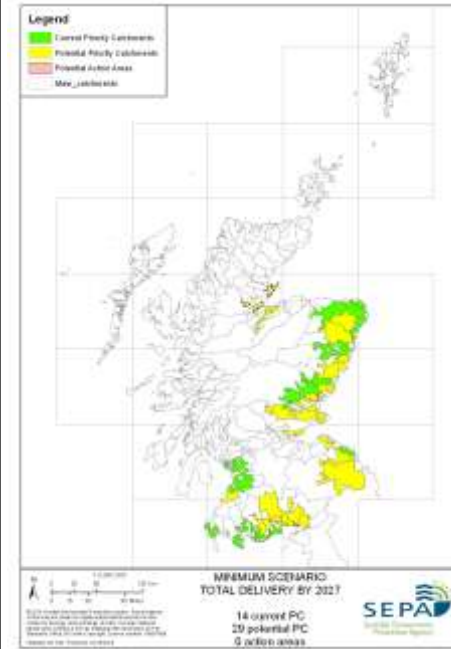
SECOND CYCLE



THIRD CYCLE



TOTAL DELIVERY BY 2027





Proposed step change 1 scenario

- Work started in all priority catchments & action areas by **2027**
- Improvements from 3rd cycle work not expected until post 2027

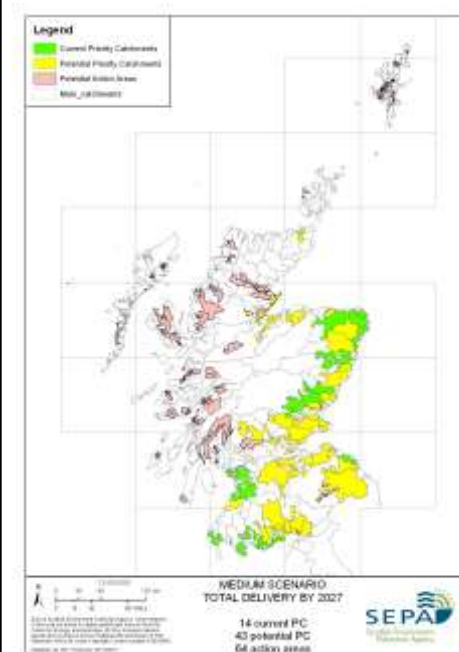
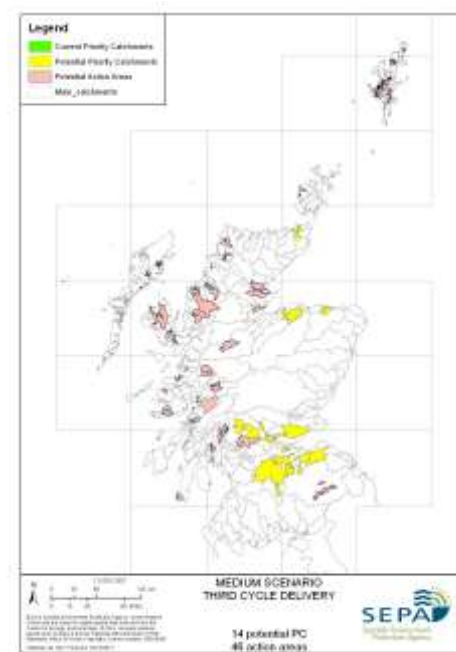
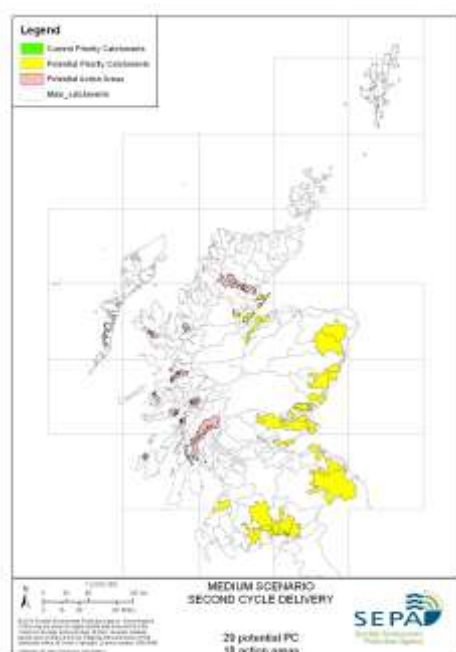
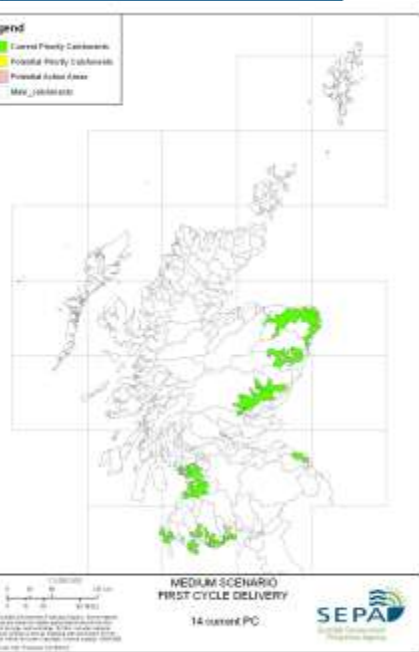
	2 nd cycle	3 rd cycle	Post 2027
New start priority catchments	29	14	n/a
New start action areas	18	46	n/a

Proposed step change 2 scenario

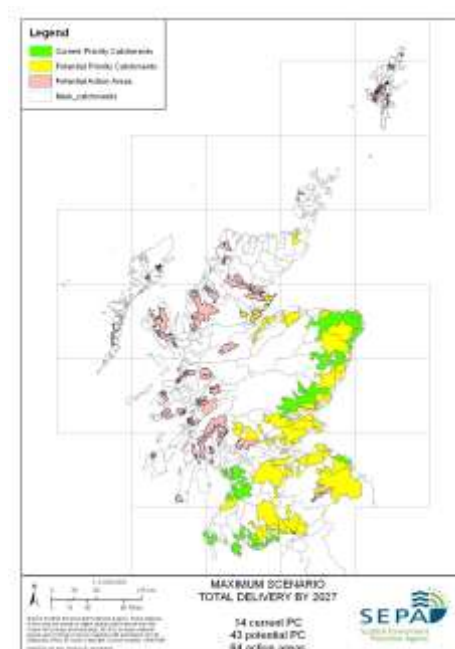
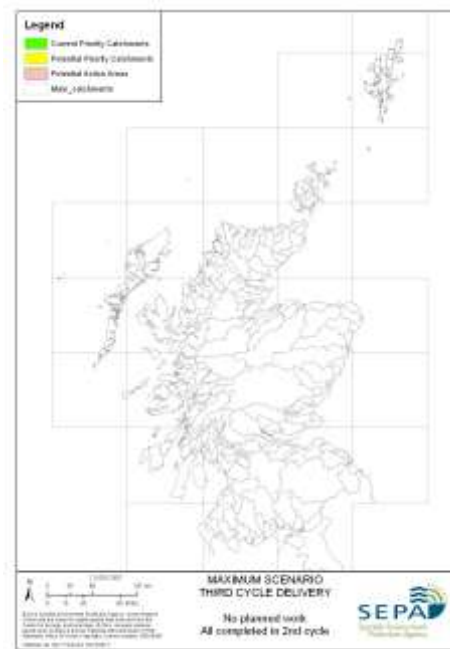
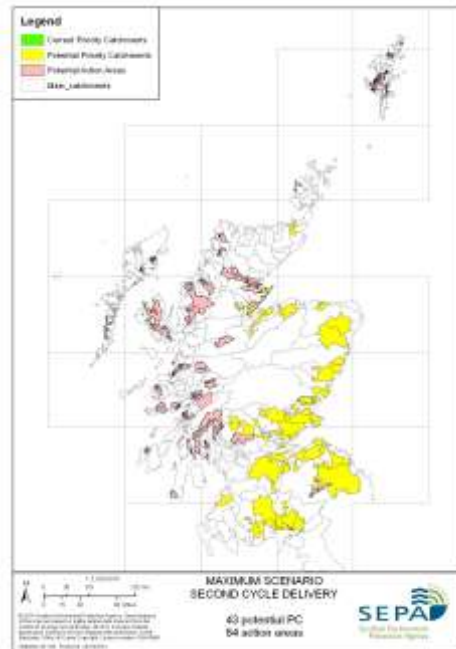
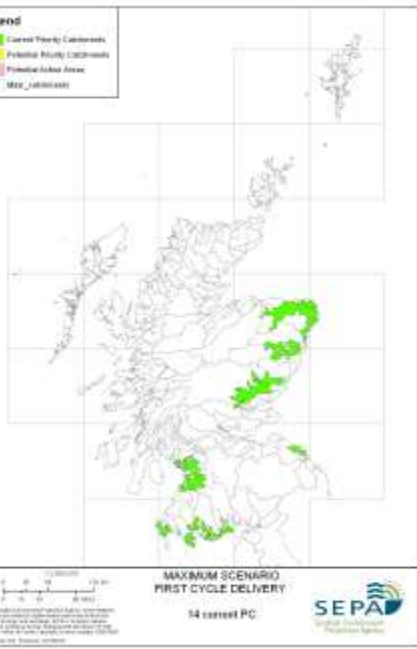
- Work started in all priority catchments & action areas by **2021**
- Maximises no. water bodies with potential to reach good status by 2027

	2 nd cycle	3 rd cycle	Post 2027
New start priority catchments	43	0	n/a
New start action areas	64	0	n/a

REVISED MEDIUM SCENARIO (Step Change 1)



REVISED MAXIMUM SCENARIO (Step Change 2)



Questions?