

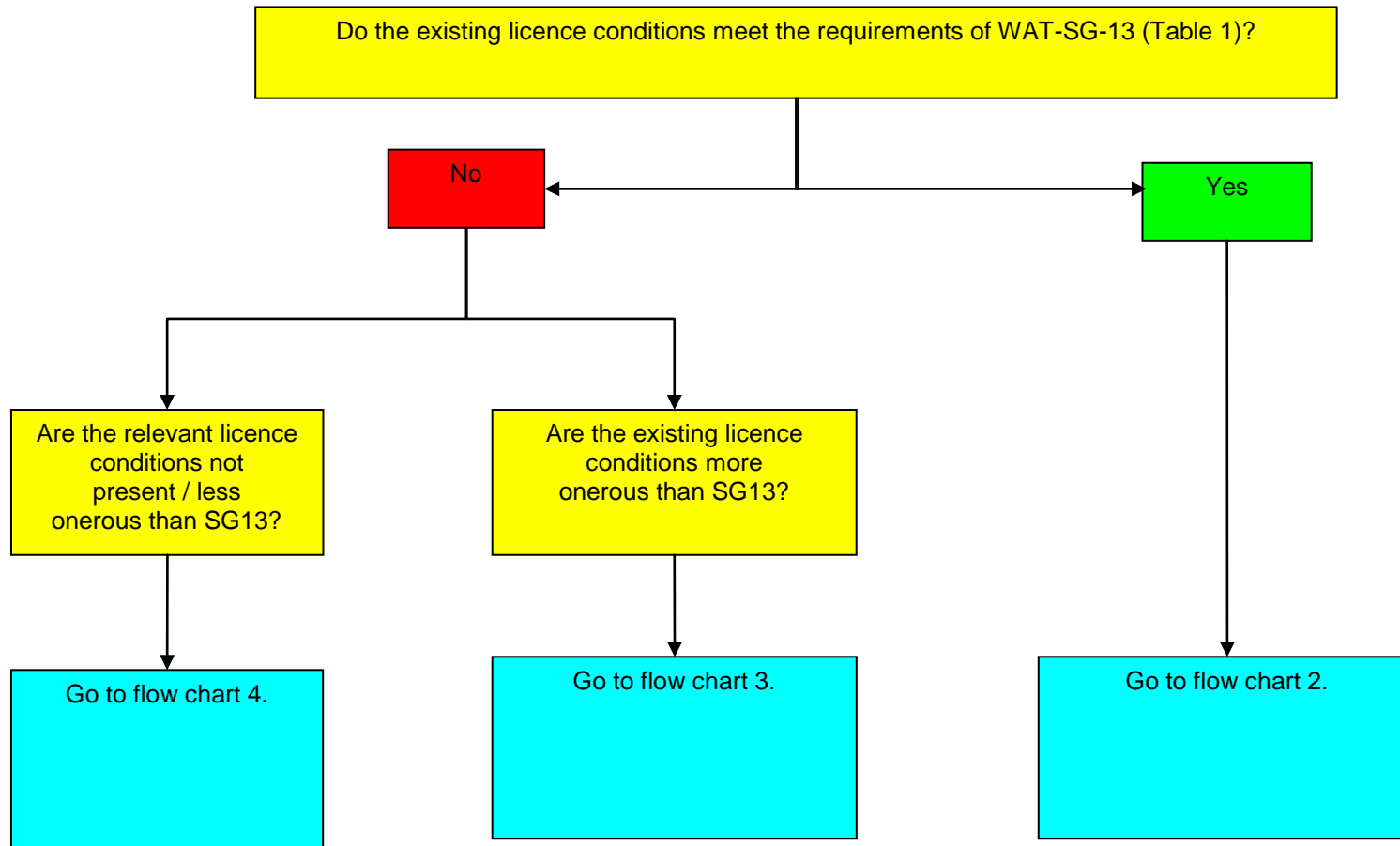
SCOTTISH ENVIRONMENT PROTECTION AGENCY	Procedure No: CAS-G-003
Operational Quality Manual	Page no Page 1 of 5
Compliance Assessment Scheme	Issue No: 2
Flow/Event Monitoring at STW's	Issue date: 06 January 2017
	Originator: Phil Leeks
	Issued by: Quality Manager
	Authorised by: Jennifer Leonard

Flow/Event Monitoring at Scottish Water STWs: Supplementary CAS Guidance

Compliance Assessment Scheme:
Assessing licence conditions

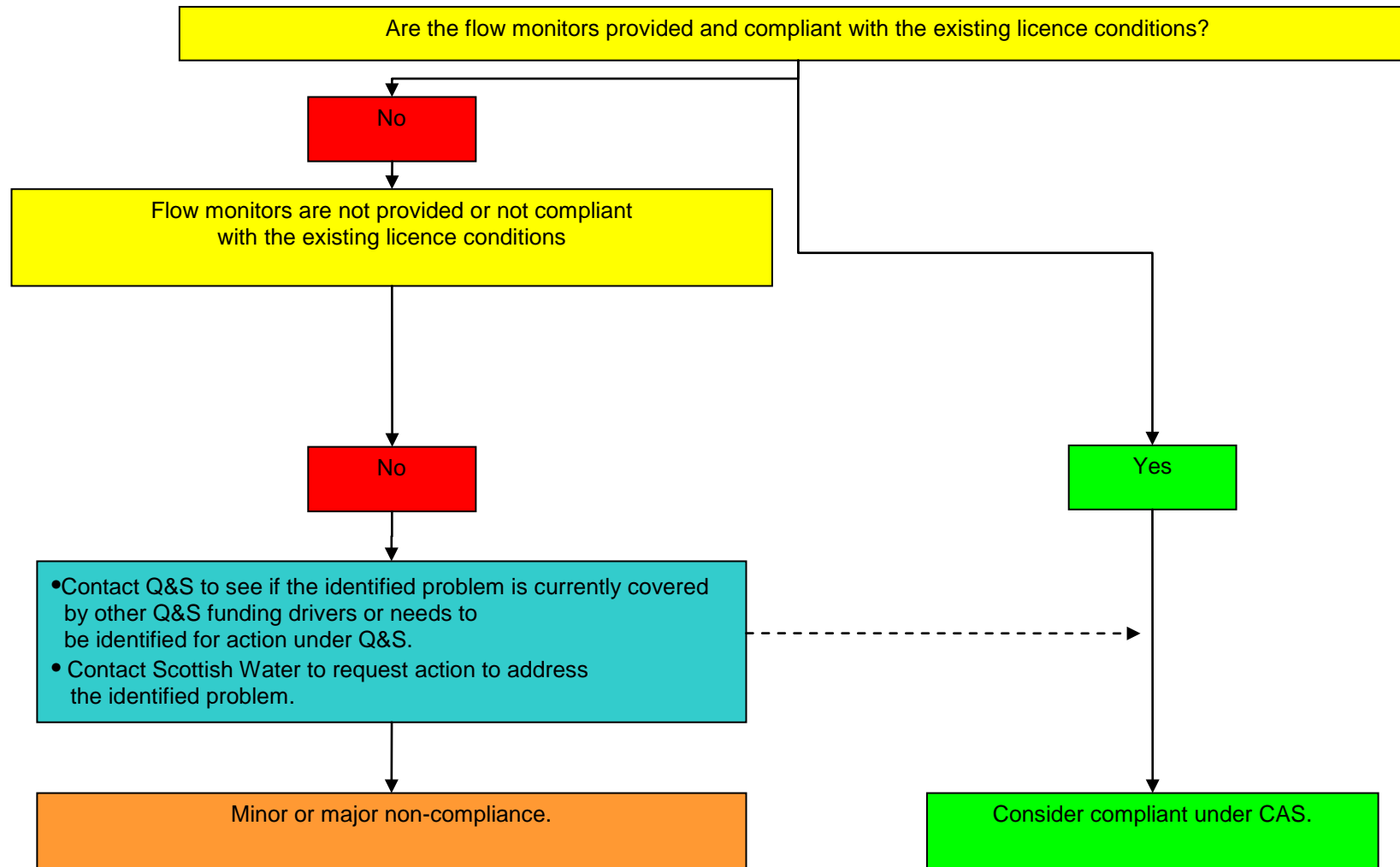
SCOTTISH ENVIRONMENT PROTECTION AGENCY	Procedure No: CAS-G-003
Operational Quality Manual	Page no Page 2 of 5
Compliance Assessment Scheme	Issue No: 2
Flow/Event Monitoring at STW's	Issue date: 06 January 2017
	Originator: Phil Leeks
	Issued by: Quality Manager
	Authorised by: Jennifer Leonard

Flow Chart 1: Assessing existing licence conditions for flow & event monitoring against WAT-SG-13 (Table 1)



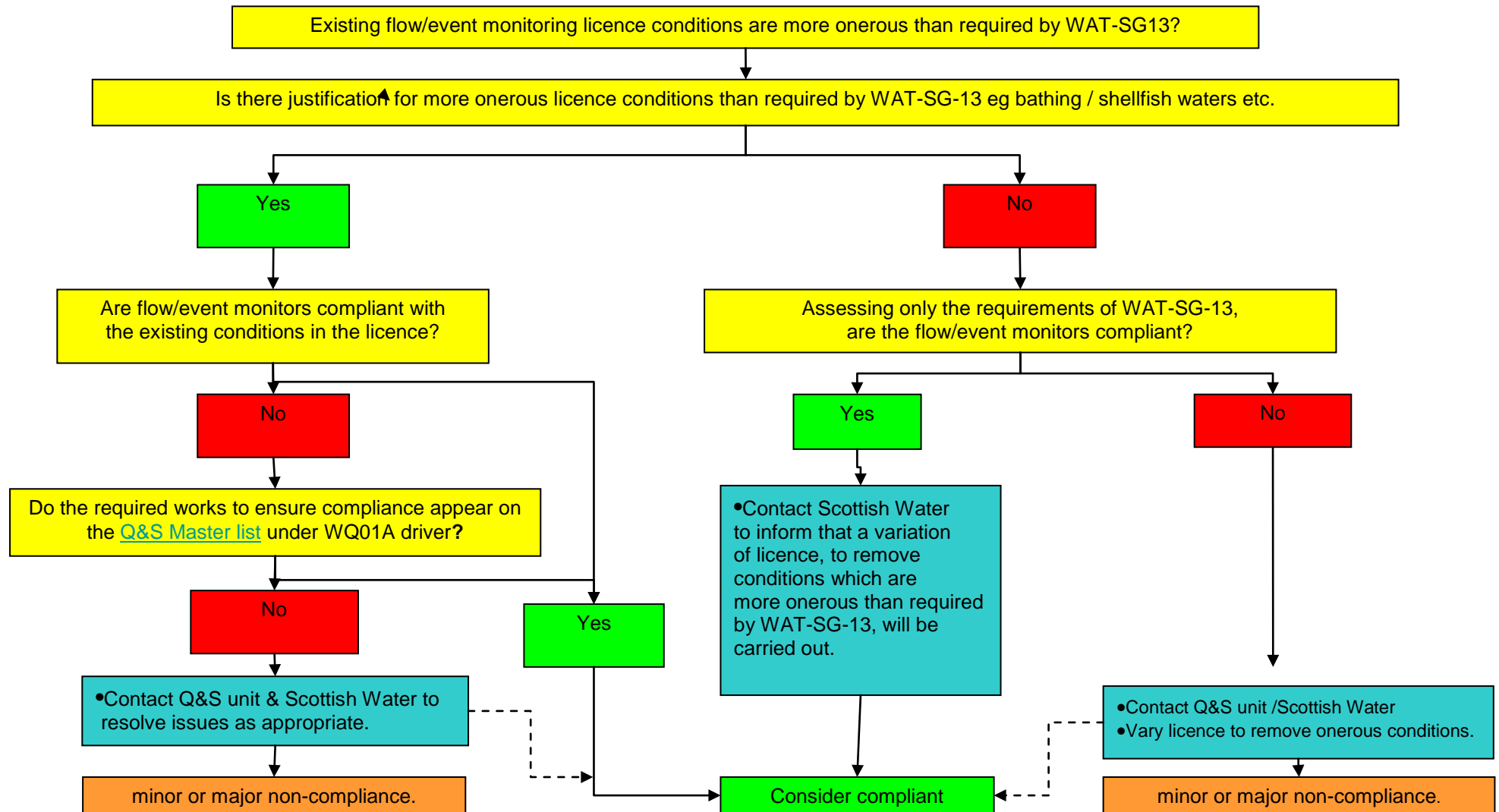
SCOTTISH ENVIRONMENT PROTECTION AGENCY	Procedure No: CAS-G-003
Operational Quality Manual	Page no Page 3 of 5
Compliance Assessment Scheme	Issue No: 2
Flow/Event Monitoring at STW's	Issue date: 06 January 2017
	Originator: Phil Leeks
	Issued by: Quality Manager
	Authorised by: Jennifer Leonard

Flow Chart 2: Assessing compliance where existing licence conditions meet the requirements of WAT-SG-13 (Table 1)



SCOTTISH ENVIRONMENT PROTECTION AGENCY	Procedure No: CAS-G-003
Operational Quality Manual	Page no Page 4 of 5
Compliance Assessment Scheme	Issue No: 2
Flow/Event Monitoring at STW's	Issue date: 06 January 2017
	Originator: Phil Leeks
	Issued by: Quality Manager
	Authorised by: Jennifer Leonard

Flow Chart 3: Assessing compliance where existing licence conditions are more onerous than requirements of WAT-SG-13 (Table1)



SCOTTISH ENVIRONMENT PROTECTION AGENCY	Procedure No: CAS-G-003
Operational Quality Manual	Page no Page 5 of 5
Compliance Assessment Scheme	Issue No: 2
Flow/Event Monitoring at STW's	Issue date: 06 January 2017
	Originator: Phil Leeks
	Issued by: Quality Manager
	Authorised by: Jennifer Leonard

Flow Chart 4: Assessing compliance where licence conditions not present or less onerous than requirements of WAT-SG-13 (Table 1)

