



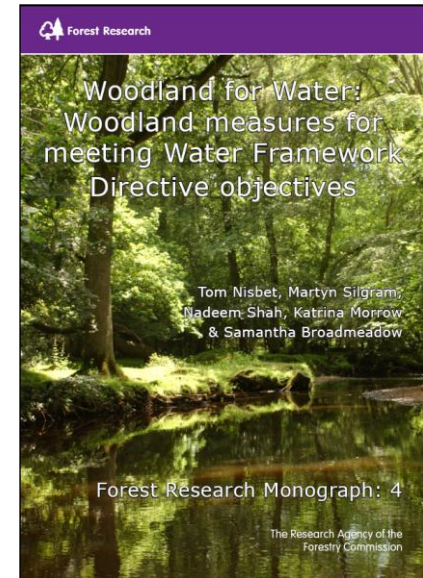
Initiatives for addressing diffuse pollution in the forestry sector

Julia Garritt, FCS Policy adviser for
water, soils and species

julia.garritt@forestry.gsi.gov.uk

- Gathering information:
 - Opportunity mapping project
 - SEPA sitting on FCS water resources group
 - RBMP workshops
- Communicating best practice
 - (Internal) Rough guide to water legislation
 - FC practice guides
 - Water training films
 - Sediment management group
 - Forestry & Water Scotland initiative
- Incentivising
 - Woodlands for water higher payment rate under new SRDP
 - Programme to support this

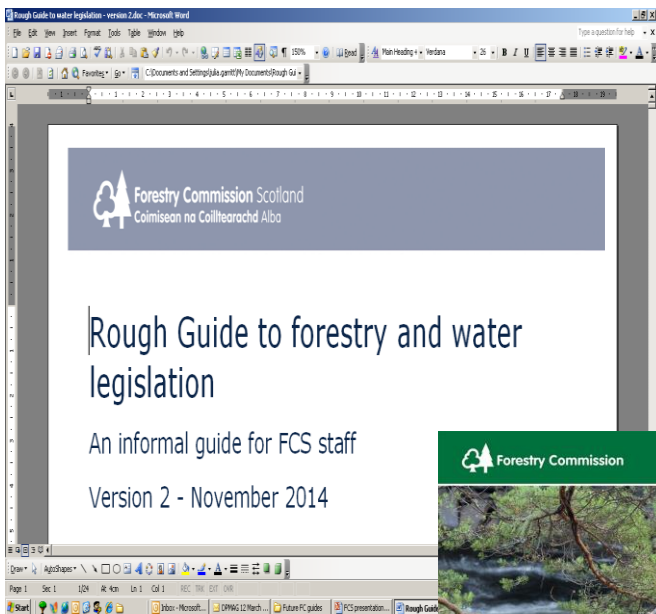
- Work by Forest Research showed the potential for woodlands, planted in the right place and managed in the right way, to help protect and improve the water environment.
- From this, FCS and SEPA ran a project that used GIS data to identify the best areas to plant trees to help reduce flood risk and reduce diffuse pollution.
- Called the “opportunity mapping” project – based on 14 DP priority catchments in 1st RBMP cycle; used same datasets as for NFM maps.
- Led to the target areas identified for the SRDP higher payment rate.



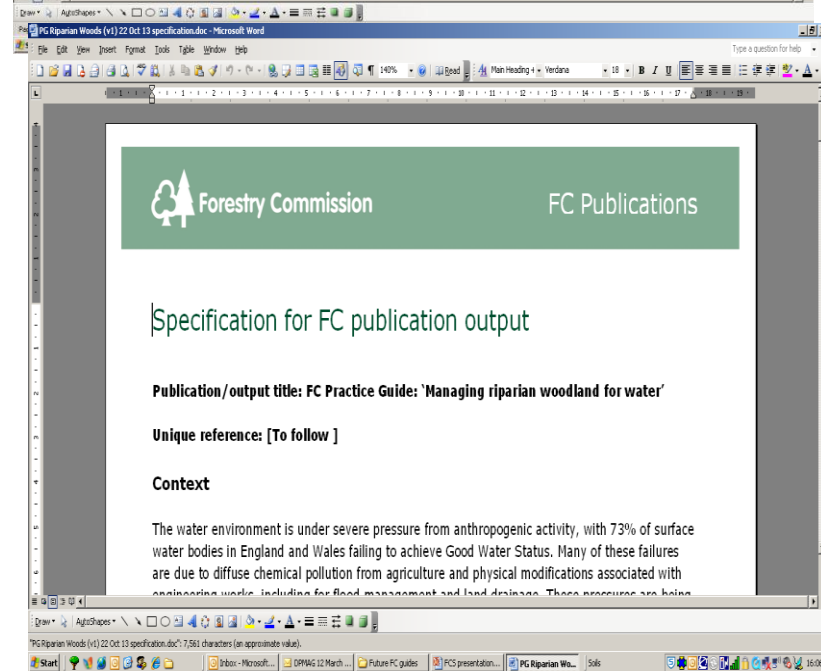
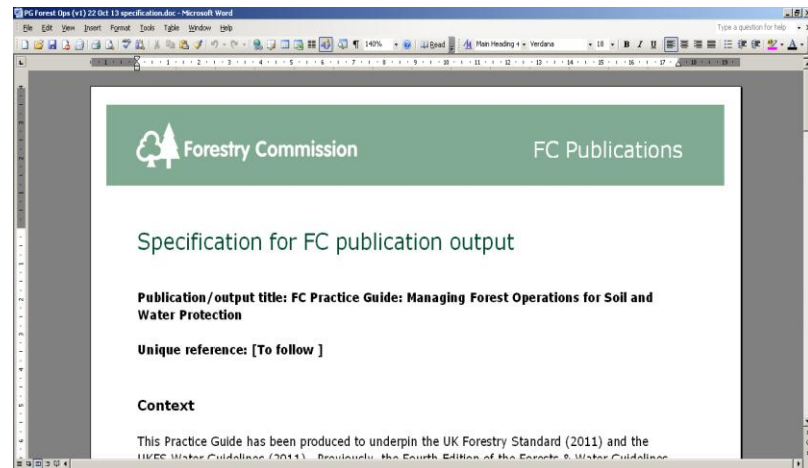
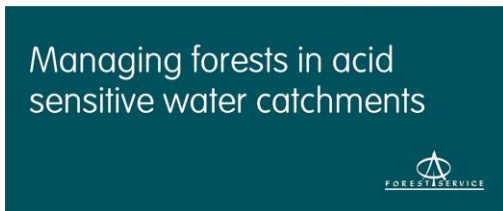
- SEPA now sits permanently on FCS water resources group – brings us together to sort out generic problems, find out each others' perspectives, and develop shared approaches and initiatives.
- The projects that have come from it are very important – but no less so is the familiarity and trust we've built up.
- It also gives us leverage at higher management level – we now have an annual FCS-SEPA senior managers meeting which triggers commitment, resources, help.

- We used the water resources group to decide a new way of engaging – Conservancy-based workshops.
- Brought together local and national staff to sense-check potential forestry pressures from water body data, and to agree objectives, measures and timescales.
- Took c. 40 days staff time from each organisation but was well worth it.





Practice Guide



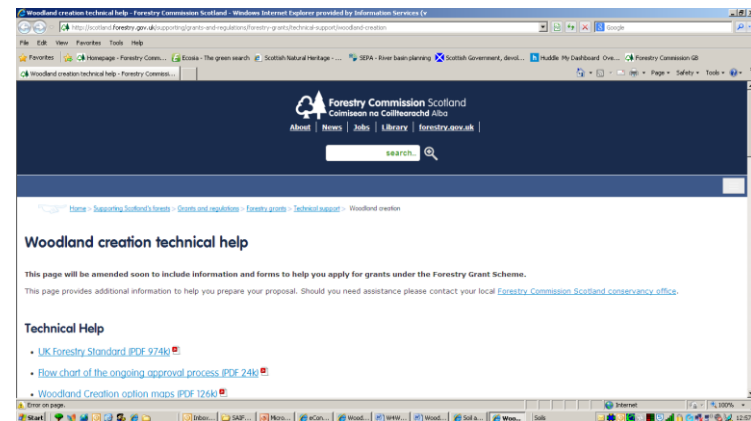
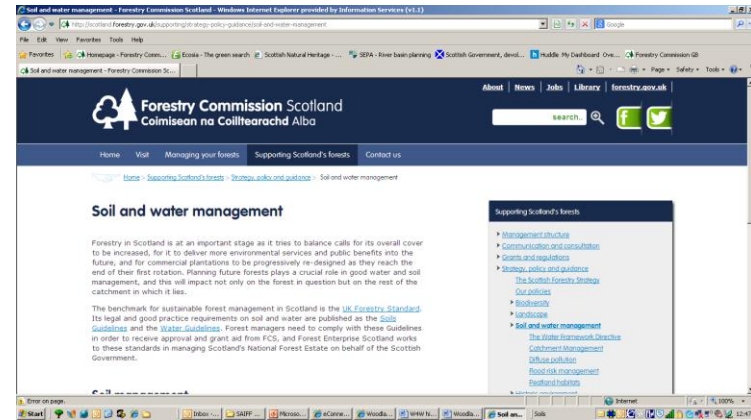
- Managing water in forests
 - New sites, harvesting and restocking, and what can go wrong
 - Aimed at all forest managers and contractors.
- Sediment management
 - How to construct sediment traps etc
 - Originally for FES staff and contractors, but may be suitable for external audience.
- FCS appeared on SEPA 'Our Soils Matter' video
 - Link between soil and water – planning is the key.

- One meeting so far, Jan 2015.
- SEPA, FCS, SG, SNH, SLE, Confor, and Forest Contractors Association.
- Unanimous agreement to produce simple rules to use on site with informative pictures, to support both UK Forestry Standard and CAR.
- Agreed that the project should be phased:
 - 1. Develop field material;
 - 2. Consider how to ensure a consistent high standard throughout publications, demonstration events etc;
 - 3. Identify specifications for forestry contracts;
 - 4. Consider if/ how this could lead to certification.
- Agreed that the initiative will work closely with users and try to develop a sense of community for a shared approach to improving water quality.

Eligible woodland creation applications will get a higher payment rate under SRDP if they plant a 'woodland for water' in a target area. Target areas derived from the opportunity mapping project – seen as a GIS layer on the FCS Map Viewer.



- We're working with SLE, NFUS, SEPA and SNH on a booklet to encourage woodlands for water to be planted in the target areas.
- It will describe the typical characteristics of this type of woodland and the typical planting and active management specifications needed.
- Due mid-summer 2015, as printed booklet and on FCS website (via Woodland Creation technical help).
- We'll run a training seminar if needed and make sure Conservancies are up to speed.



- Finalise the woodlands for water booklet
- Publicise the water training films
- Get funding and a project manager for the FWS initiative
- Make sure the W4W higher payment rate is implemented smoothly
- Make sure RBMP 2 is implemented smoothly
- Work with partners on the FC practice guides