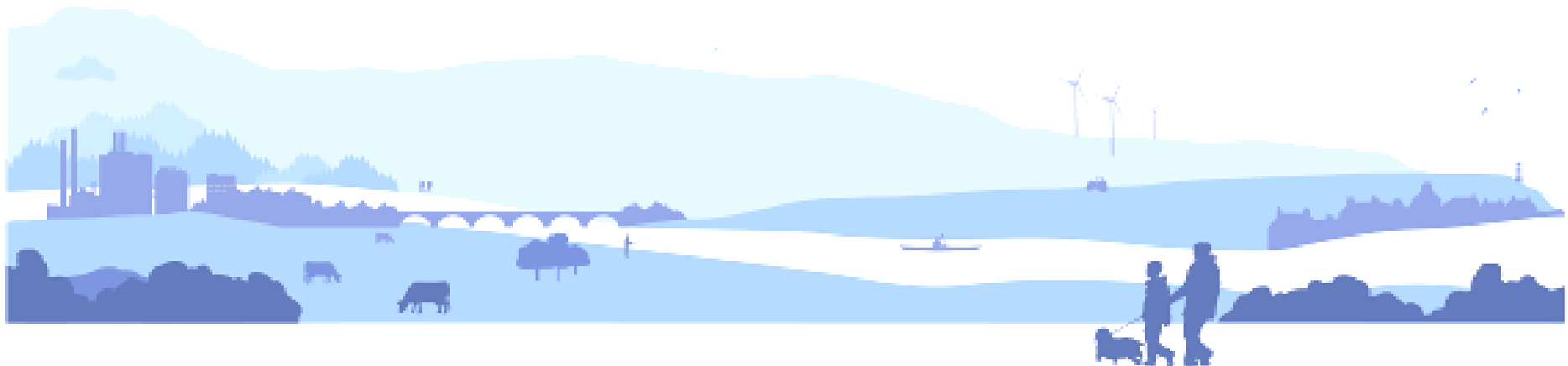


RBMP update

Plans, progress, people's views

Eilidh Johnston and David Harley



The consultation set out options for strategic implementation

- **Approaches for**
 - water pollution from land contamination and toxic pollution
- **Scenarios for**
 - Rural diffuse pollution
 - Restoring physical condition of beds, banks and shores
 - Restoring fish passage at man-made barriers

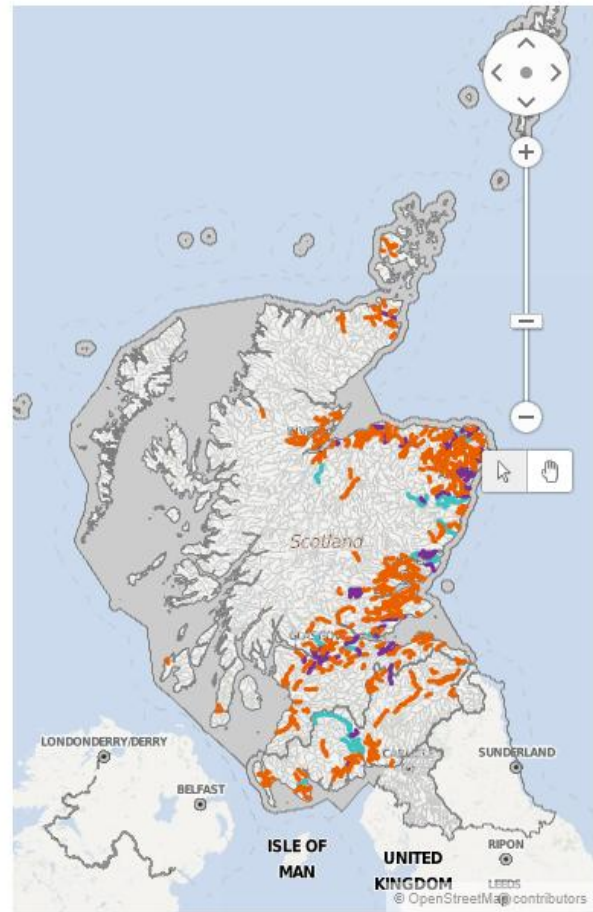
Overall consultation responses

- Other water quality pressures – agreed with approach
- HMWBs – generally supportive
- General comments; further investigations where we have uncertainty, partnership working, integrating planning and projects for multiple benefits, engagement

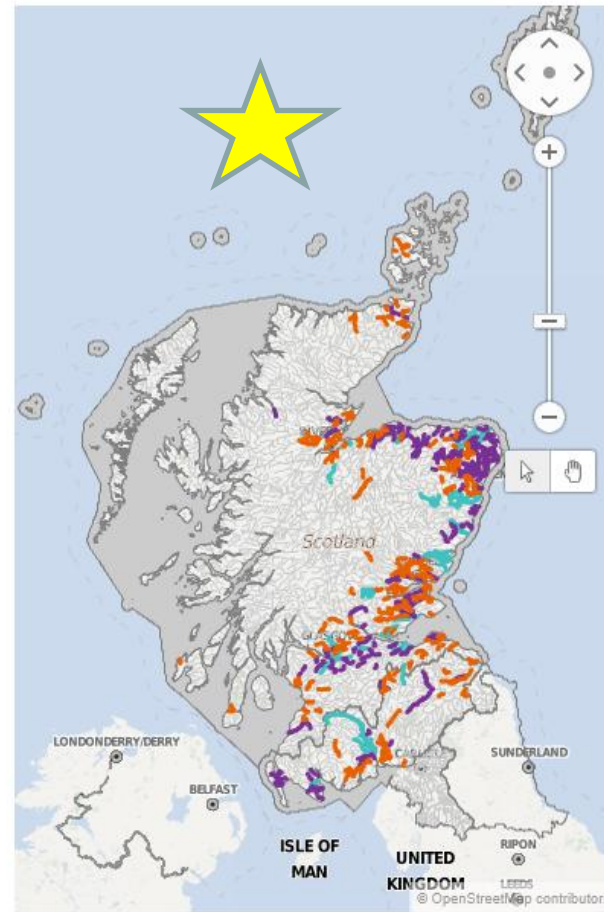


Physical condition responses

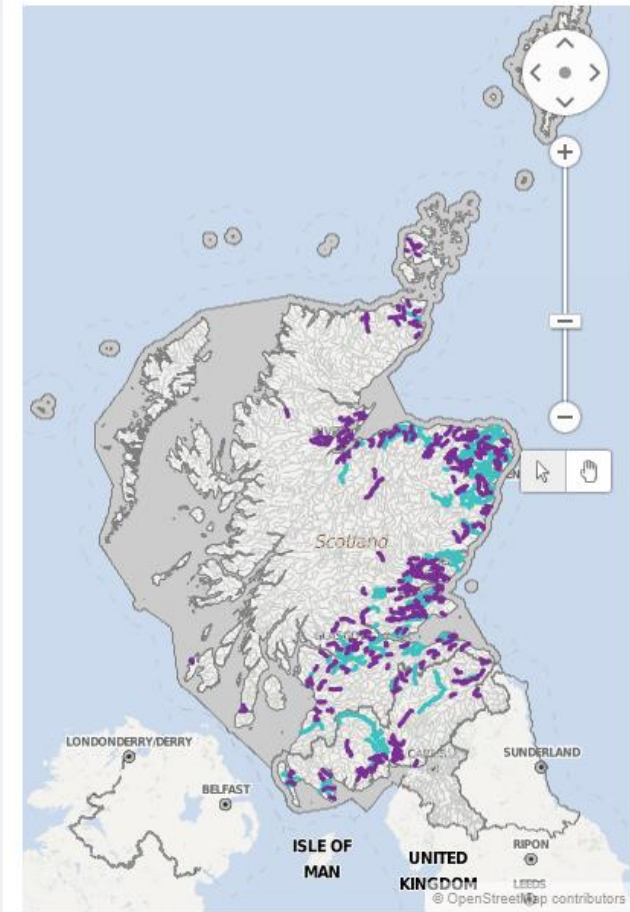
Physical condition baseline objectives



Physical condition step change 1 objectives



Physical condition step change 2 objectives

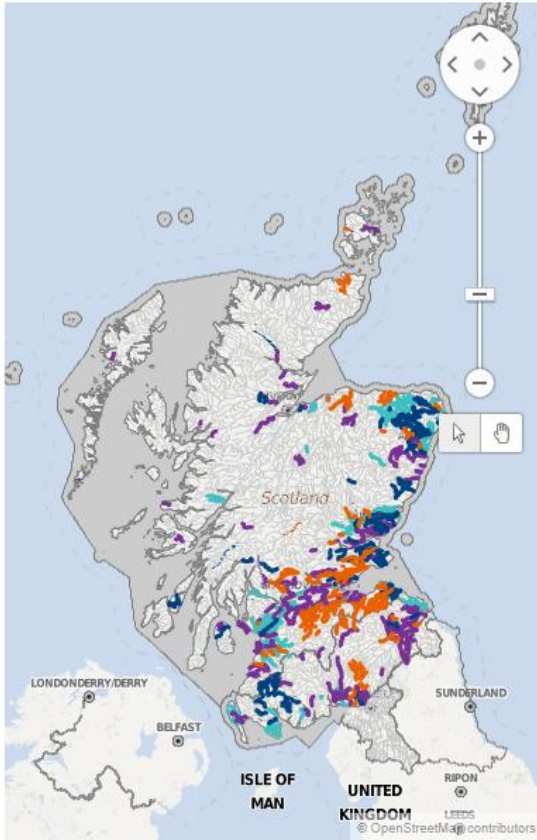


Fishery responses on physical condition

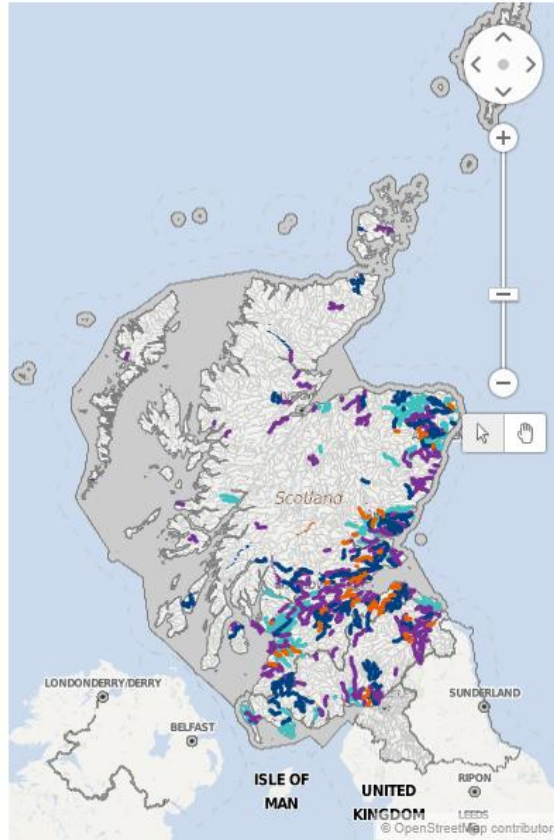
- Need clear evidence of ecological impacts (e.g. consider evidence that low gradient straightened streams can be good for juvenile salmonids)
- Consider riparian vegetation more in classification
- Prioritisation must take account of fish ecology and protected areas
- Consider pressures in a joined up way – e.g. look at diffuse pollution, hydro dams, sediment movement and restoration
- Look at simple and feasible techniques, partnership delivery.

Rural diffuse pollution responses

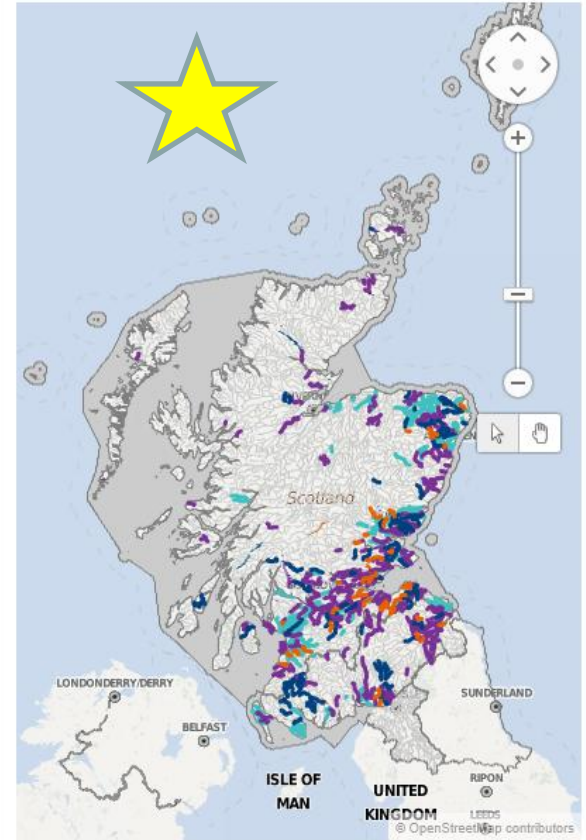
Water quality baseline objectives



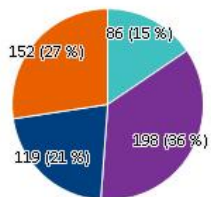
Water quality step change 1 objectives



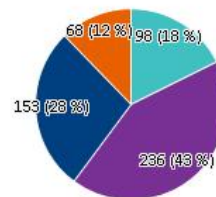
Water quality step change 2 objectives



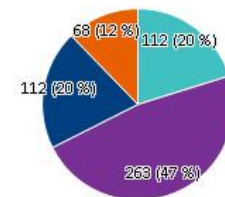
Proposed Water quality objectives for baseline (number and %)



Proposed Water quality objectives for step change 1 (number and %)

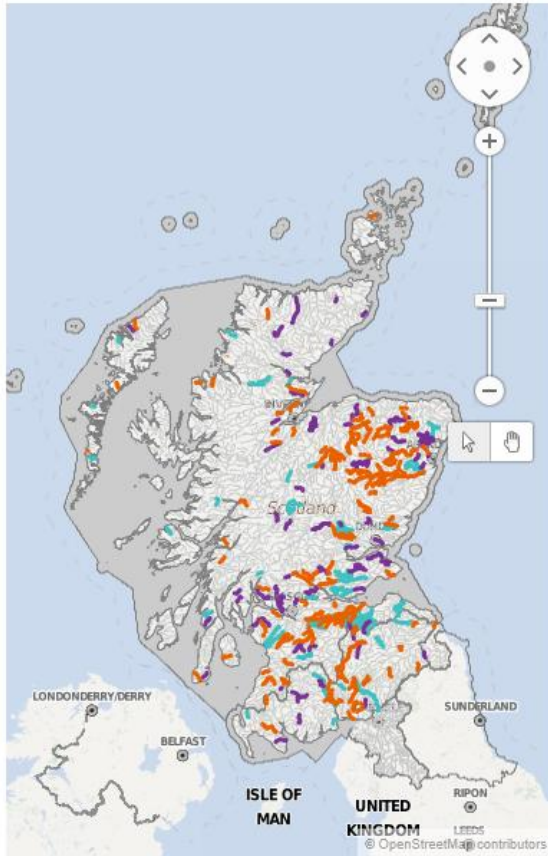


Proposed Water quality objectives for step change 2 (number and %)

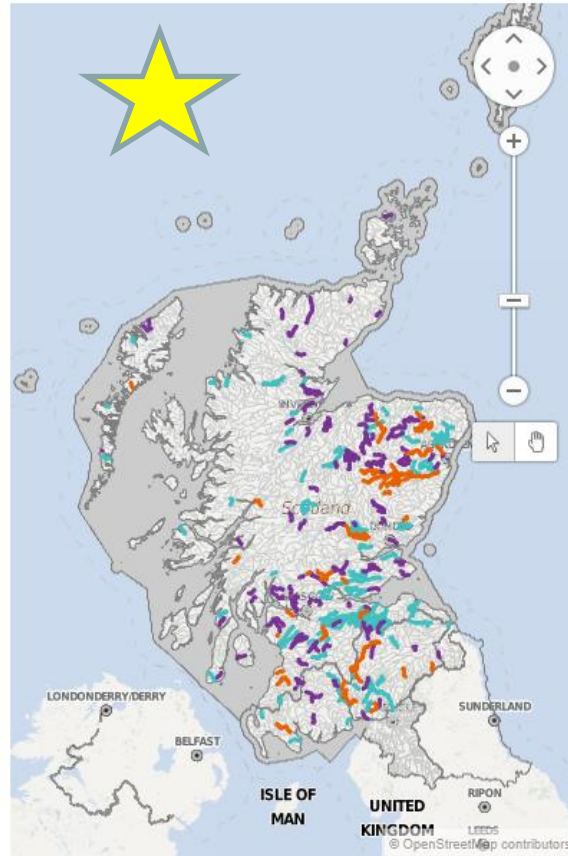


Fish barrier responses

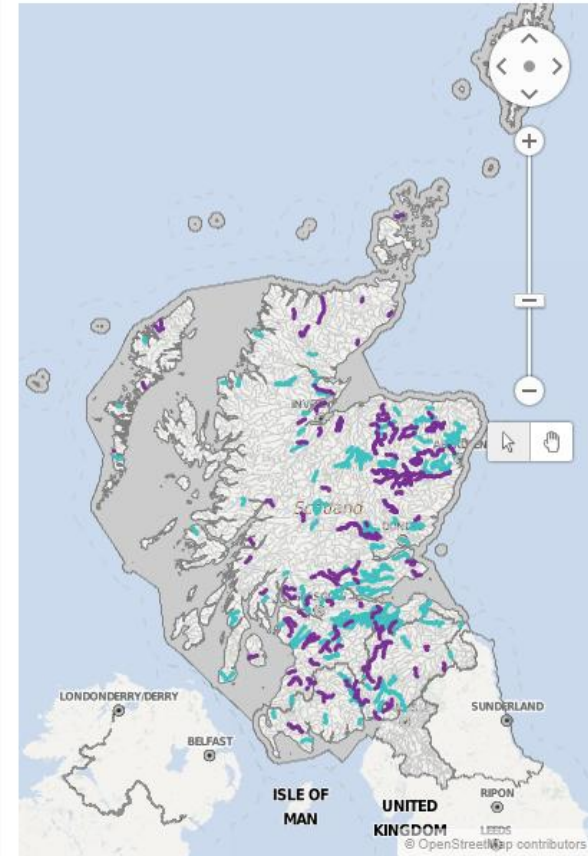
Barriers to fish movement baseline objectives



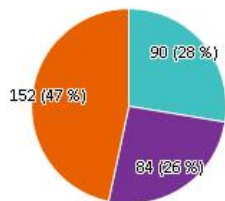
Barriers to fish movement step change 1 objectives



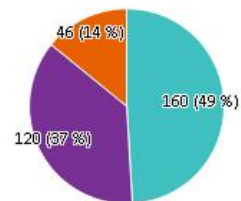
Barriers to fish movement step change 2 objectives



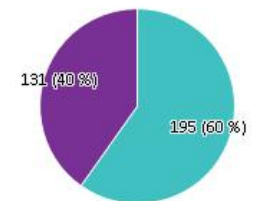
Proposed Barriers to fish movement objectives for baseline (number and %)



Proposed Barriers to fish movement objectives for step change 1 (number and %)



Proposed Barriers to fish movement objectives for step change 2 (number and %)



Barrier responses – fishery themes

- Support for the prioritisation process, but queries about specific water bodies
- Need for more action by public authorities
- Mechanism for demonstrating disproportionate costs
- Need to consider downstream migration of juveniles and smolts, partial barriers and cumulative effects
- Consider role of barriers in sediment transport – links with physical condition
- Removal favoured over fish passes – for multiple benefits

INNS responses

- Focus on need for control strategies as well as prevention
- Concerns about data and responsibilities for control
- Need to build biosecurity into restoration projects

Engagement since our last meeting

- Worked with local authorities and some fishery trusts to:
 - Refine our information on fish barriers
 - Look at areas where there may be scope for partnership working on morphology

Next steps

- Continue to refine prioritisation & delivery based on feedback received
- Solway Tweed closes 9th June 2015
- Minister feedback on preferred level of ambition end of May 2015
- Digest of consultation responses to be published September, final plans in December 2015
- Scottish Government restoration regulations to be published in autumn
- Review of engagement

