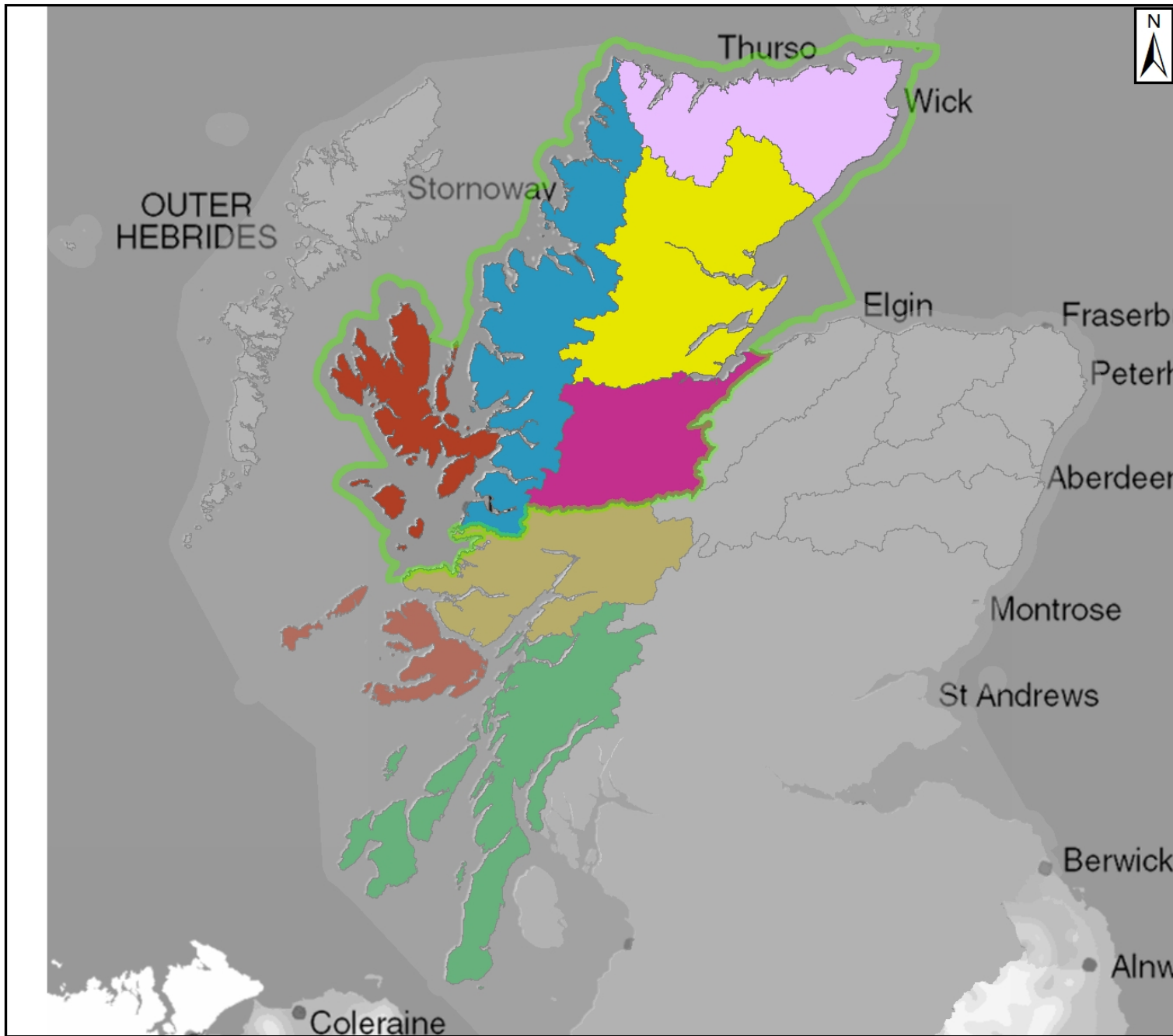


Highland Local Advisory Group

Dingwall, 20th June



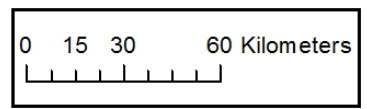
Highland catchments

Local Advisory Groups

- other LAG areas
- Highland

Catchments

- other catchment
- Wick and Thurso
- Ness & Beaulieu
- Loch Linnhe, Lochy and Loch Sheil
- Loch Aish, Loch Maree and Laxford
- Inner Hebrides
- Helmsdale, Shin and Conon
- Fyne, Clyde, Awe, Etive and Kintyre



©Crown copyright . All rights reserved.
SEPA lic. no. 100016991 (2016).

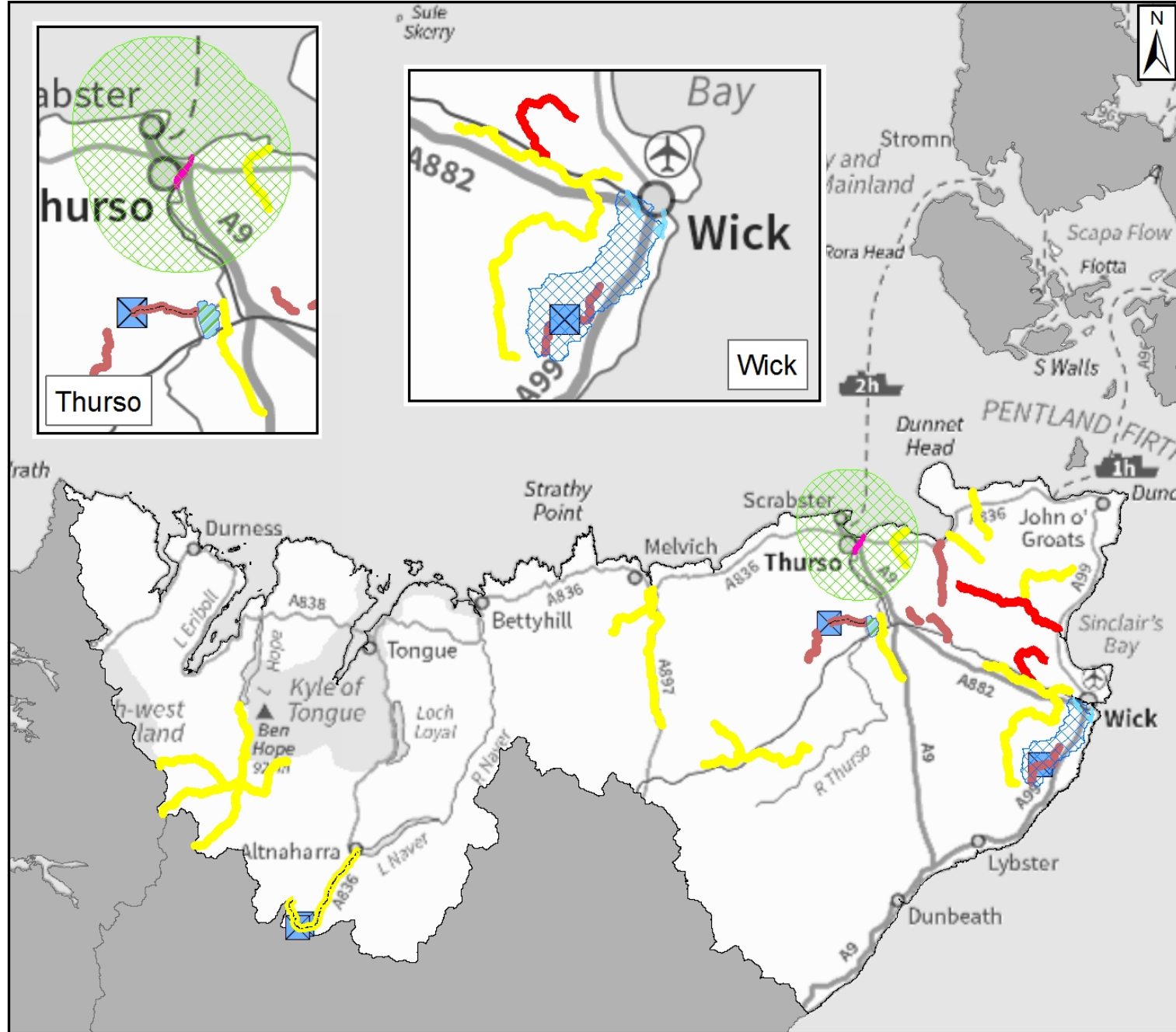
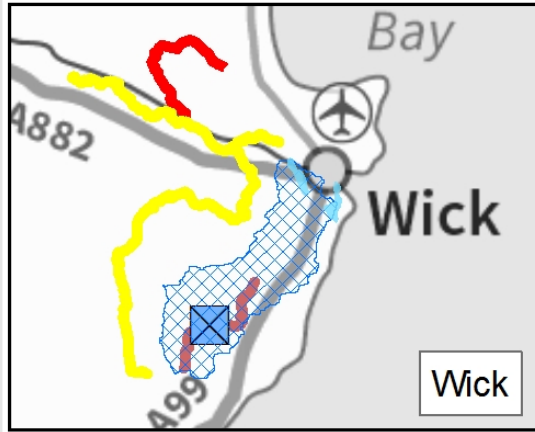
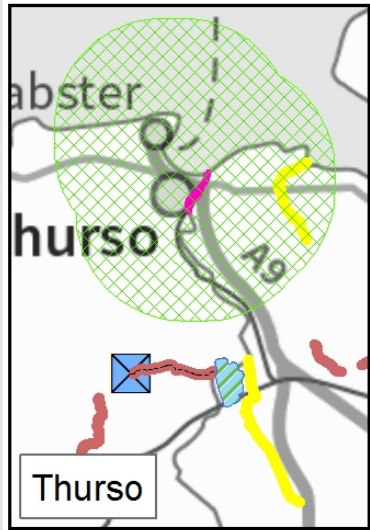
LPD actions

- Awareness raising
- Emergency plans / response
- Planning policies
- Maintenance
- Self help
- Flood forecasting



WICK AND THURSO

Wick and Thurso



Actions

- Flood protection study
- Strategic mapping and modelling
- Indicative SWMP area
- Coastal mapping
- River mapping

2014 River classification

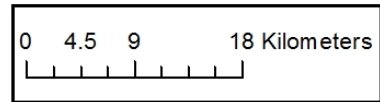
- Bad
- Poor ecological potential
- Poor
- Moderate ecological potential
- Moderate

Obstacles to fish

- Active, 2027

Catchments

- other catchment
- Wick and Thurso



Action	2016	2017	2018	2019	2020	2021
The Highland Council will undertake a hydraulic study in Thurso to improve understanding of coastal flooding, including wind and wave action, and river flooding.						
Scottish Water will undertake sewer catchment mapping and modelling.	Halkirk and Thurso					
	Wick					
SEPA will improve the river flood hazard mapping in the Loch Hempriggs area.						
SEPA will improve surface water mapping in the Wick area.						

NESS AND BEAULY

Ness and Beauly



Obstacles to fish

- Asset, 2021
- Asset, 2027

Actions

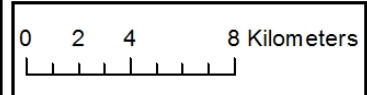
- Flood protection scheme/works
- Flood protection study
- Maintain flood protection scheme
- Natural flood management study
- Indicative SWMP area
- Indicative NFM

2014 River classification

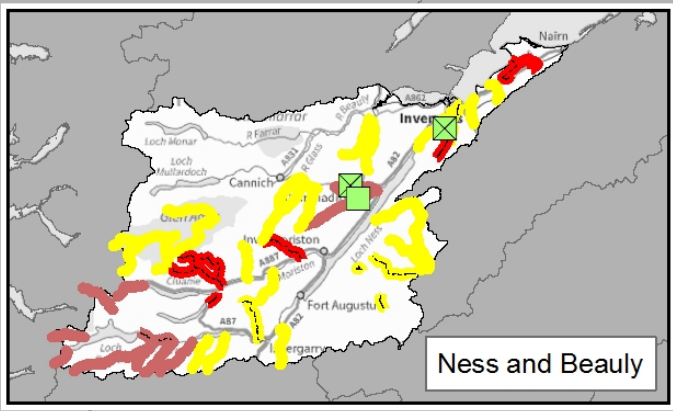
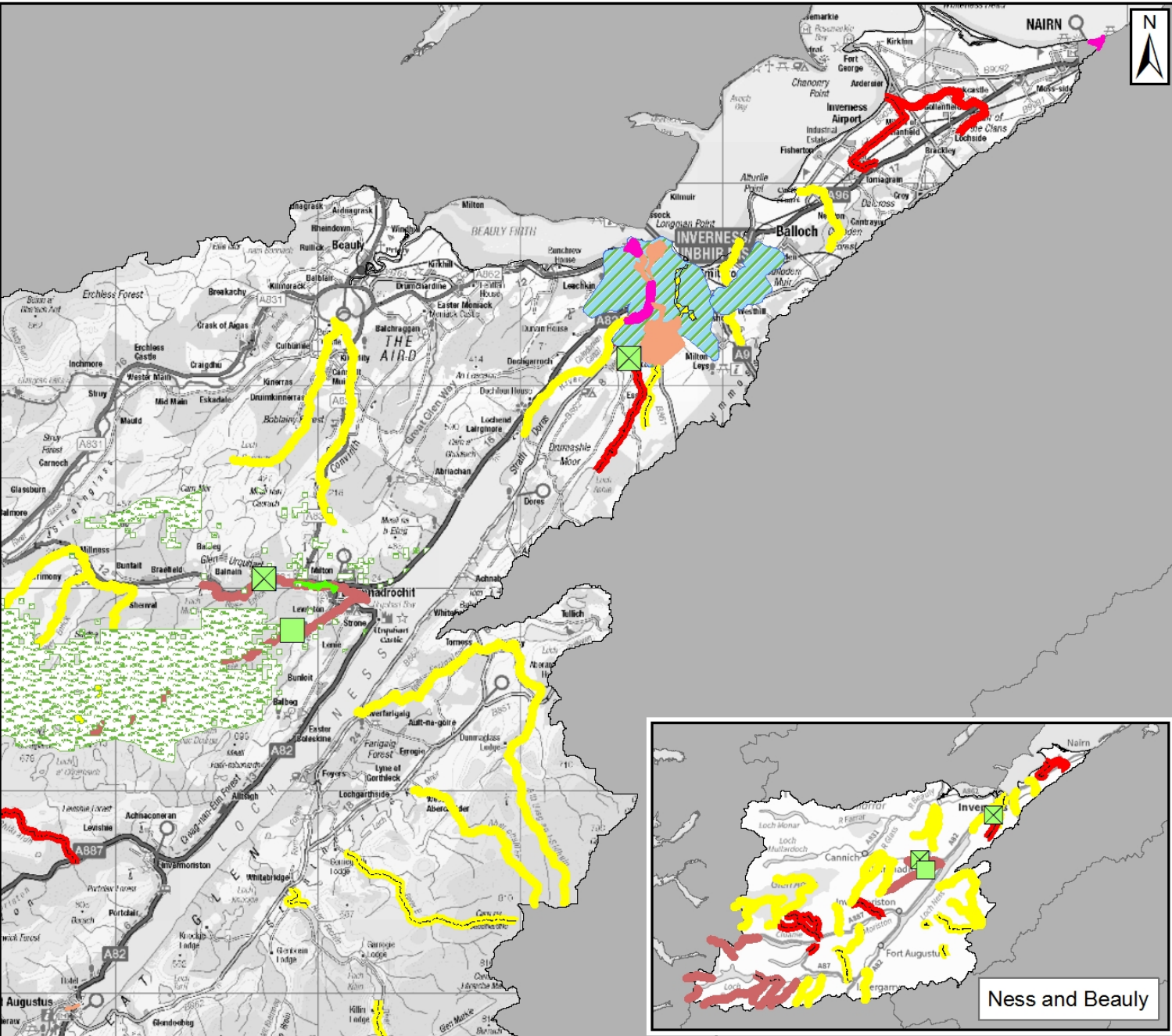
- Bad ecological potential
- Bad
- Poor
- Moderate ecological potential
- Moderate

Catchments

- other catchment
- Ness & Beauly



©Crown copyright . All rights reserved.
SEPA lic. no. 100016991 (2016).



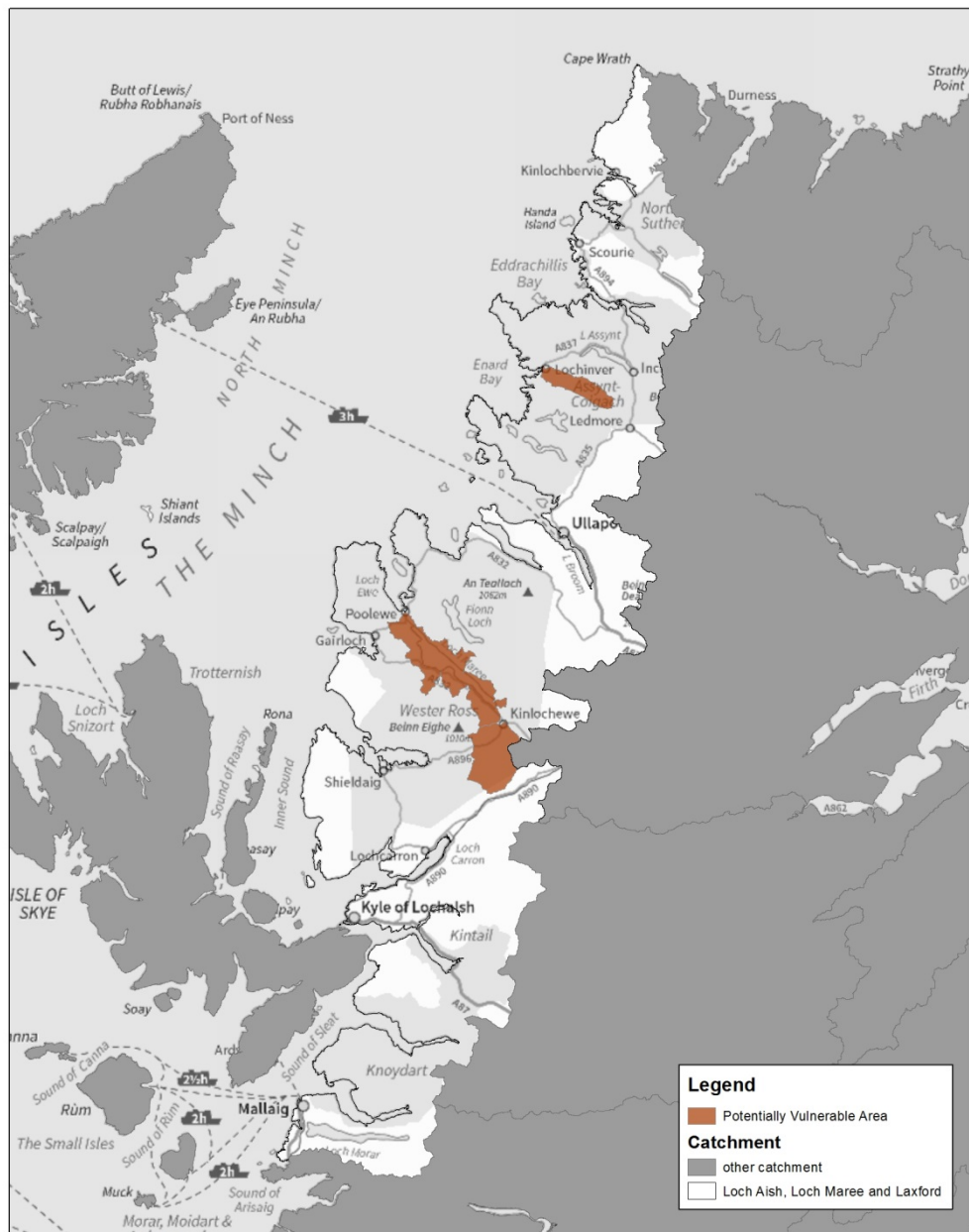
Ness and Beauly

Action	2016	2017	2018	2019	2020	2021
The Highland Council will undertake a flood study to address risk in Nairn from coastal and river (River Nairn and Auldearn Burn) flooding. The study will investigate opportunities for natural flood management on the Auldearn Burn.						
The Highland Council will undertake a flood study in the South Kessock area of Inverness to address coastal flood risk.						
The Highland Council will carry out a flood protection study in Inverness to address flood risk from The River Ness between ness bridge and Ness islands.						
The Highland Council will continue to maintain the River Ness Flood Alleviation Scheme (Tidal section), the South West Inverness Flood Protection Scheme and the Fort Augustus Flood Protection Scheme (River Oich).						
The Highland Council will implement phase 4 of the flood protection scheme in Smithton and Culloden to alleviate surface water flooding. Phases 1-3 are already implemented.						
The Highland Council will implement a flood protection scheme to reduce flood risk in Inverness from the Mill Burn.						



Action	2016	2017	2018	2019	2020	2021
The Highland Council will implement a flood protection scheme in Drumnadrochit to protect properties from the River Enrick. Potential for natural flood management will be investigated.						
The Highland Council will carry out a natural flood management study to reduce flood risk from the River Enrick in Drumnadrochit. This will tie in with the Drumnadrochit flood prevention scheme.						
The Highland Council will develop a Highland-wide surface water management plan with focus areas in Smithton and Culloden, Inverness						
Scottish Water will lead on an integrated catchment study for Inverness and Smithton and Culloden.						
Scottish Water will improve sewer catchment modelling.	Ardersier					
			Nairn, Highland PFI			
SEPA will improve 1,200km ² of surface water hazard and risk mapping in the Highland and Argyll Local Plan District.						
There is a community flood action group, the Glen Urquhart Land Use Partnership, in Drumnadrochit.						

LOCH AISH, LOCH MAREE AND LAXFORD



N
 0 5 10 20 km
 0 4.25 8.5 17 Miles

© 2016 Scottish Environment Protection Agency. Some features of this map are based on digital spatial data licenced from the Centre for Ecology and Hydrology. © CEH. Includes material based upon Ordnance Survey mapping with permission of H.M. Stationery Office. © Crown Copyright. Licence number 100016991.
 Helpdesk ref: N/A. Produced: 10/06/2016

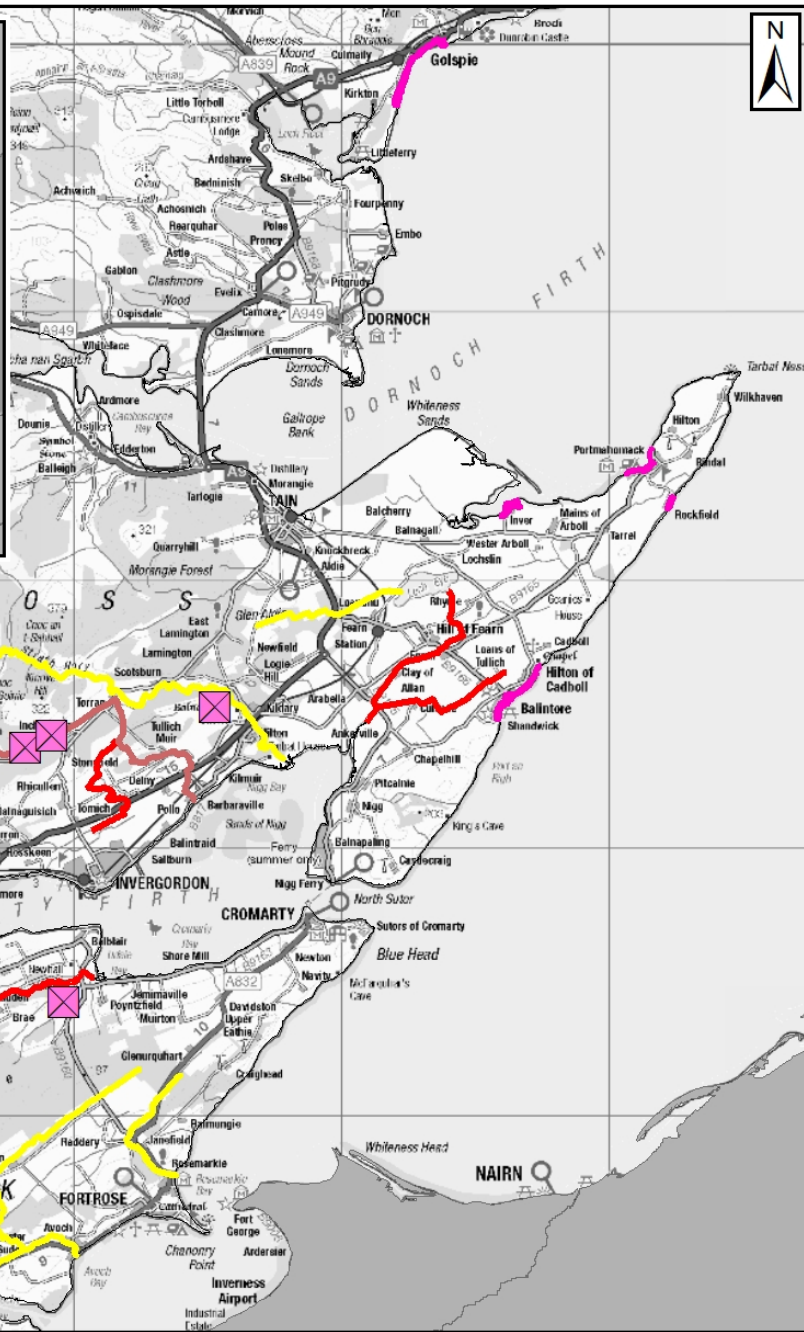
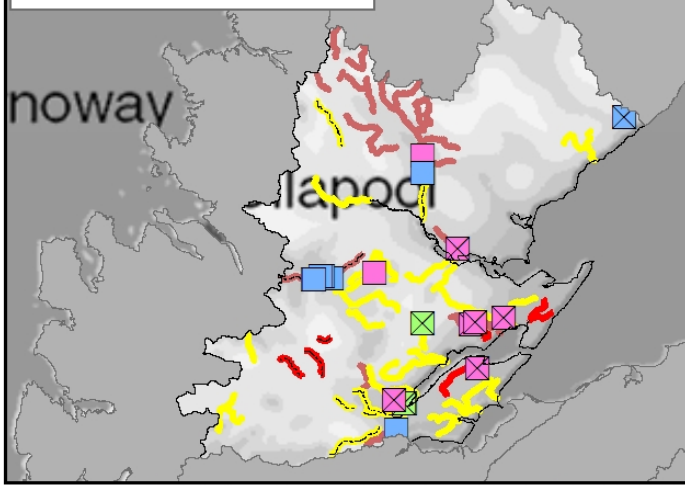
Loch Aish, Loch Maree and Laxford



Action	2016	2017	2018	2019	2020	2021
The Highland Council will work with a school in Lochinver to create a site protection plan.						

HELMSDALE, SHIN AND CONON

Helmsdale, Shin and Conon



Helmsdale, Shin and Conon

- Catchments**
- other catchment
 - Helmsdale, Shin and Conon Group

Obstacles to fish

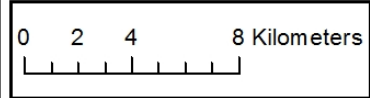
- Active, 2021
- Active, 2027
- Asset, 2021
- Asset, 2027
- Historic, 2021
- Historic, 2027

Actions

- Flood protection study
- Maintain flood protection scheme
- Strategic mapping and modelling
- Indicative NFM
- Indicative SWMP

2014 River classification

- Bad
- Poor ecological potential
- Poor
- Moderate ecological potential
- Moderate



Action	2016	2017	2018	2019	2020	2021
The Highland Council will undertake a hydraulic study to improve modelling of coastal flooding in Golspie.						
The Highland Council will undertake a flood study in Tarbat Ness, focussing on the villages of Inver, Skinnerton, Balintore, Portmahomack and Rockfield to address risk from coastal flooding, including wave action.						
The Highland Council will carry out a flood study in Dingwall and Strathpeffer to address flood risk from the River Peffery and coast.						
The Highland Council will continue to maintain the existing Dingwall Flood Protection Scheme, which includes flood embankments along parts of the River Pefferey in Dingwall and the River Conon Flood Protection Scheme in Conon.						
The Highland Council will develop a Highland-wide surface water management plan. Focus areas will include Dingwall, Strathpeffer						



Action	2016	2017	2018	2019	2020	2021
Community flood action groups in Golspie						
The Highland Council will work with a school and a care home in Alness and a school in Garve to create site protection plans.						
SEPA will improve modelling of the River Alness / Avern in Alness.						
SEPA will improve 1,200km ² of surface water mapping in the Highland and Argyll Local Plan District, including Golspie, Contin and Garve, Conon bridge and Muir of Ord						
Scottish Water will undertake sewer catchment modelling in Golspie (2016 – 2020), Balintore and Dingwall and Strathpeffer (2016 – 2017), Invergordon and Alness (2016 – 2018), Conon Bridge and Muir of Ord (2016 – 2019)	Golspie					
	Balintore, Dingwall, Strathpeffer					
	Invergordon, Alness					
	Conon Bridge and Muir of Ord					
Transport Scotland will carry out civil engineering works, which will reduce flood risk, on the A853 in Contin and Garve						



LOCH LINNHE, LOCHY AND LOCH SHIEL

Loch Linnhe, Lochy and Loch Sheil



Actions

Flood protection scheme/works

Flood protection study

Indicative SWMP areas

2014 River classification

Bad ecological potential

Poor ecological potential

Poor

Moderate ecological potential

Moderate

Active, 2027

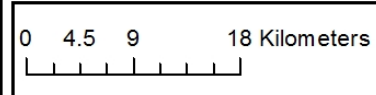
Asset, 2027

Historic, 2027

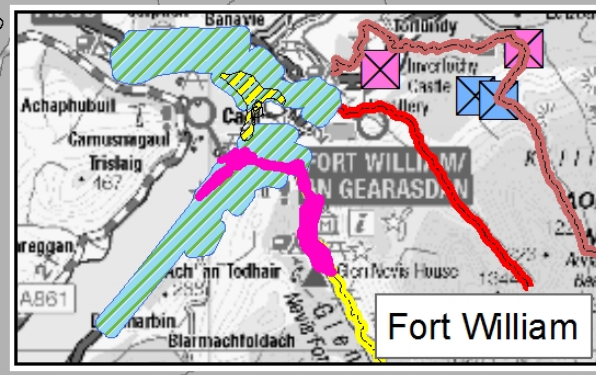
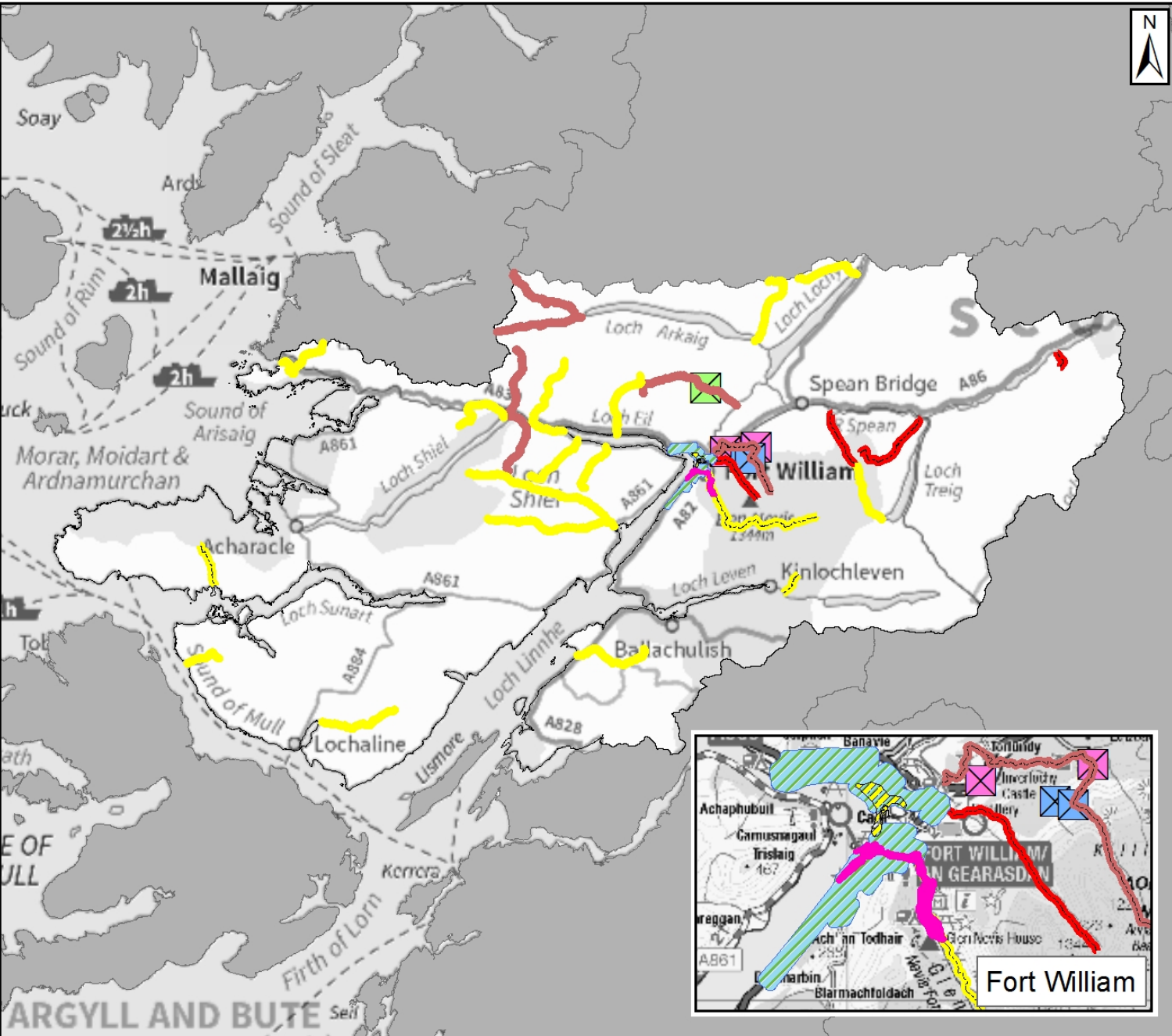
Catchments

other catchment

Loch Linnhe, Lochy and Loch Sheil



©Crown copyright . All rights reserved.
SEPA lic. no. 100016991 (2016).



Action	2016	2017	2018	2019	2020	2021
The Highland Council will undertake a flood study in Fort William to address risk from Loch Linnhe and the River Nevis.						
The Highland Council will progress a flood protection scheme in Caol to reduce flood risk from Loch Linnhe and the River Lochy.						
The Highland Council will develop a Highland-wide surface water management plan. Focus areas will include Fort William and Corpach.						
Transport Scotland will carry out works on the A830 (Lochailort) and A82 (Fort William, Ballachulish and Glencoe)						
Scottish Water will undertake sewer modelling in Corpach and Fort William (sewer catchment.						



INNER HEBRIDES

Inner Hebrides



Potentially Vulnerable Areas

2014 River classification

Poor

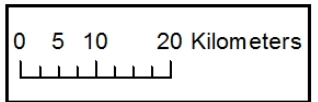
Moderate ecological potential

Moderate

Catchments

other catchment

Inner Hebrides



©Crown copyright. All rights reserved.
SEPA lic. no. 100016991 (2016).

