

River Basin Management Plans

- Second Plan for Scotland River Basin District published on 21 December 2015
- Solway Tweed published 18 February 2016
- Strategic plan covering all our water environment work until 2027





**The river basin management plan for the
Scotland river basin district 2015 - 2027**

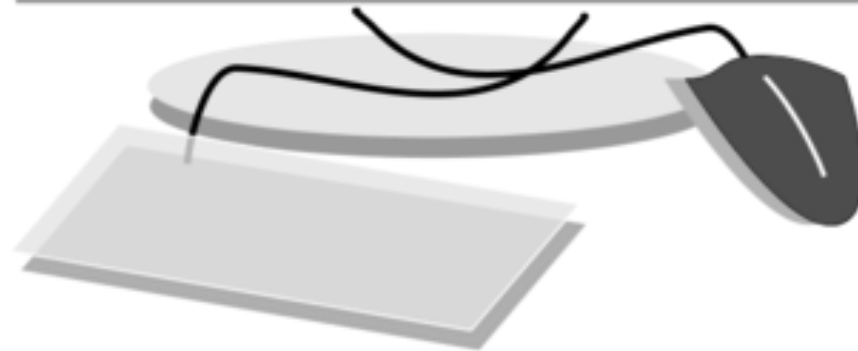
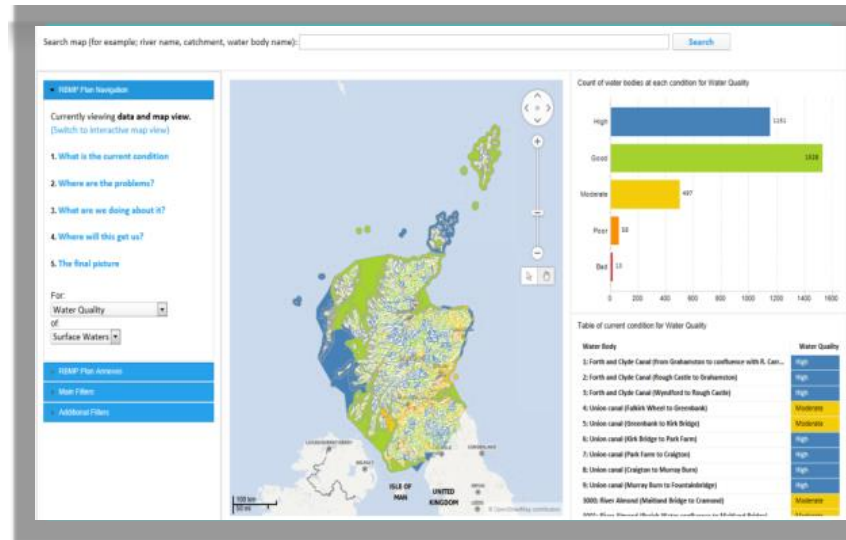


**Working together to protect and improve our water
environment**

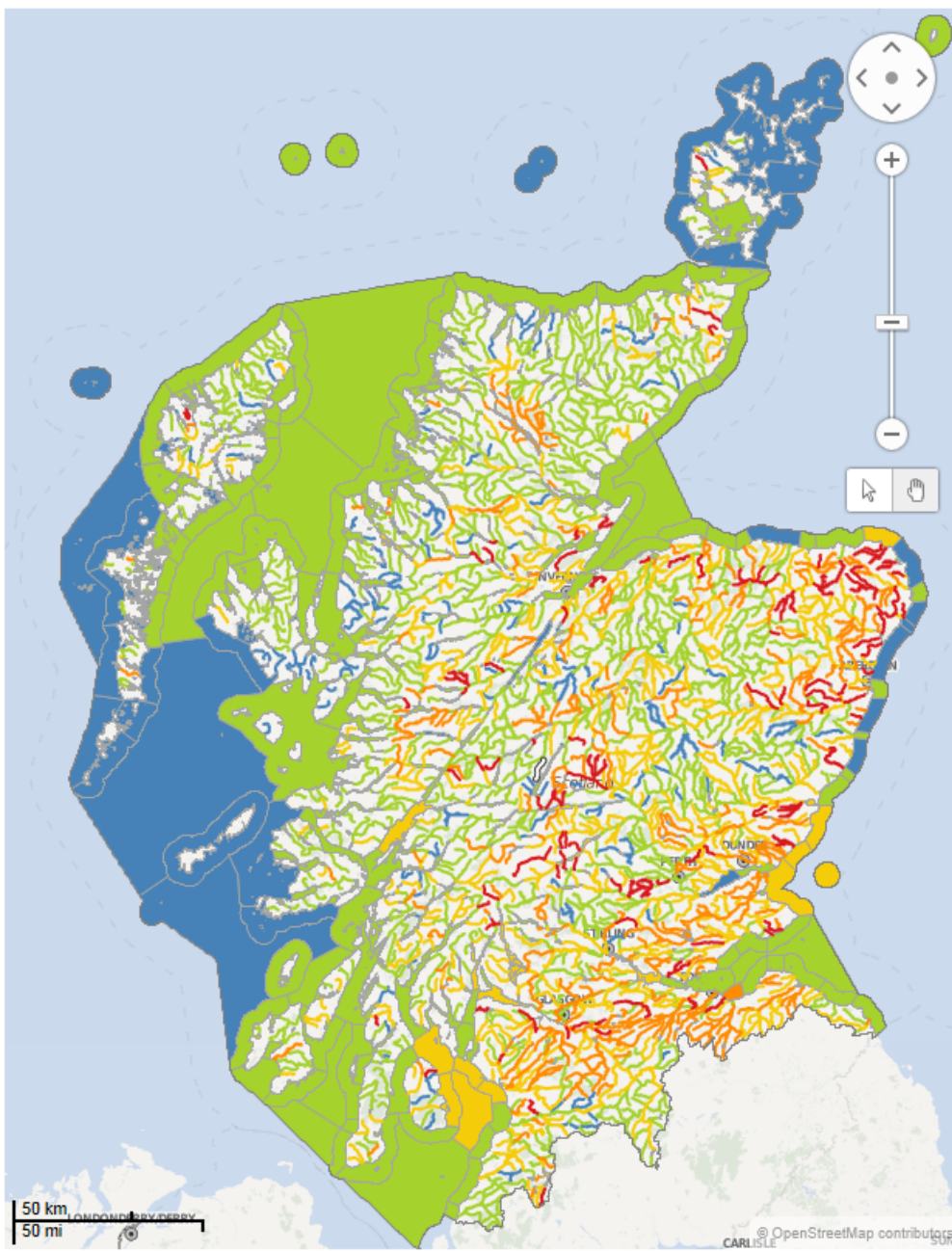
The RBMPs set out;

- scale of pressures
- action needed
- what we expect to achieve by 2021 and 2027
- Organised around 5 themes:
 - water quality
 - physical condition
 - fish barriers
 - flows and levels
 - INNS

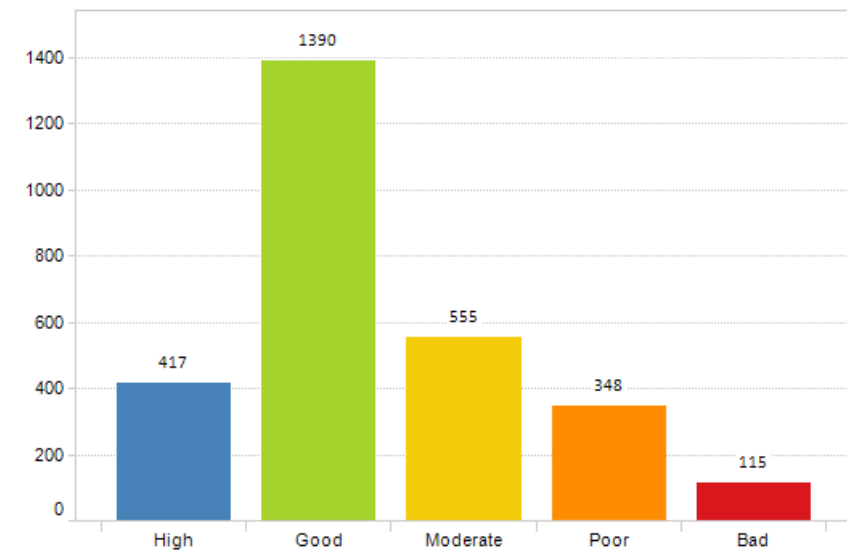
SEPA Water Environment Hub



This map displays the overall condition of bodies of surface waters in 2014



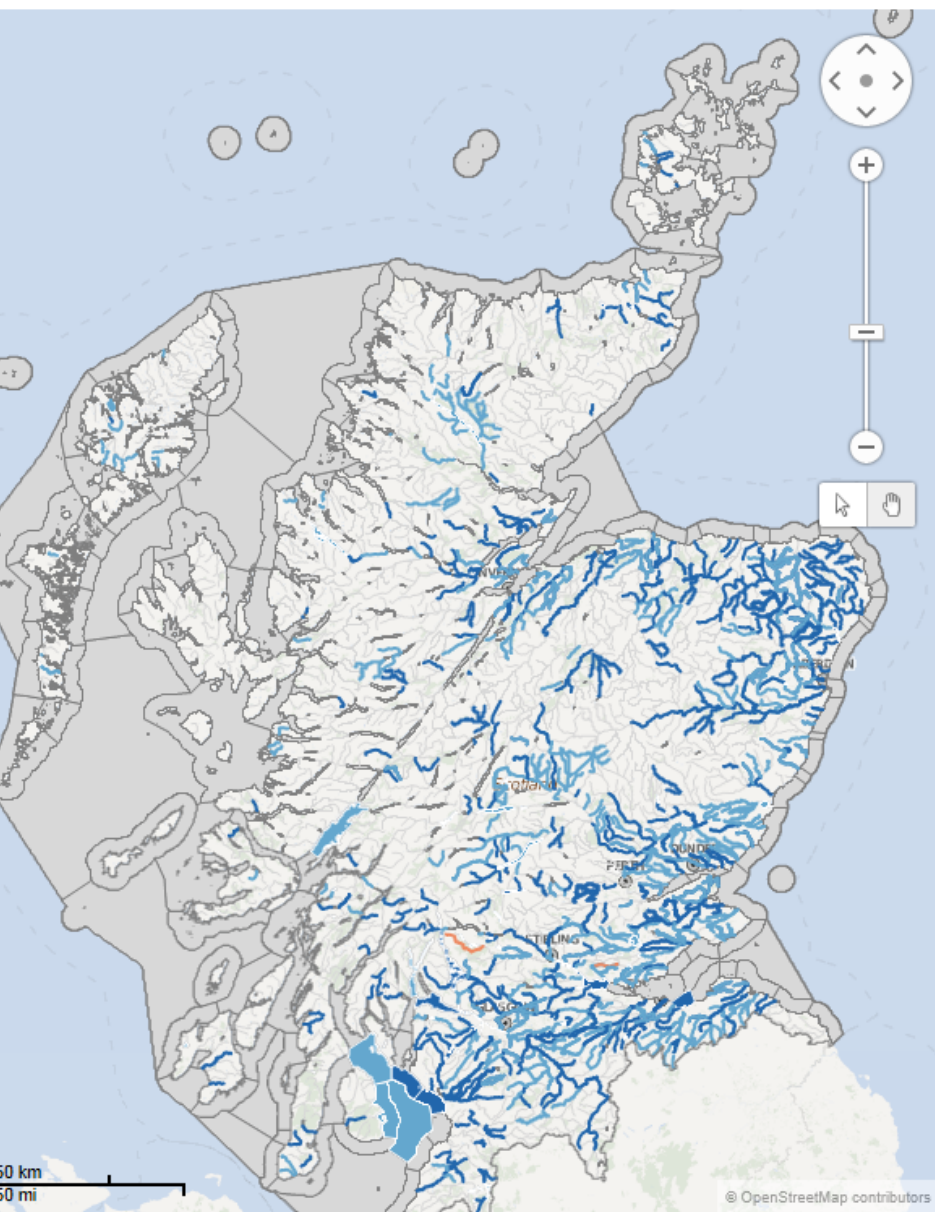
Overall condition of surface waters - number of surface waters



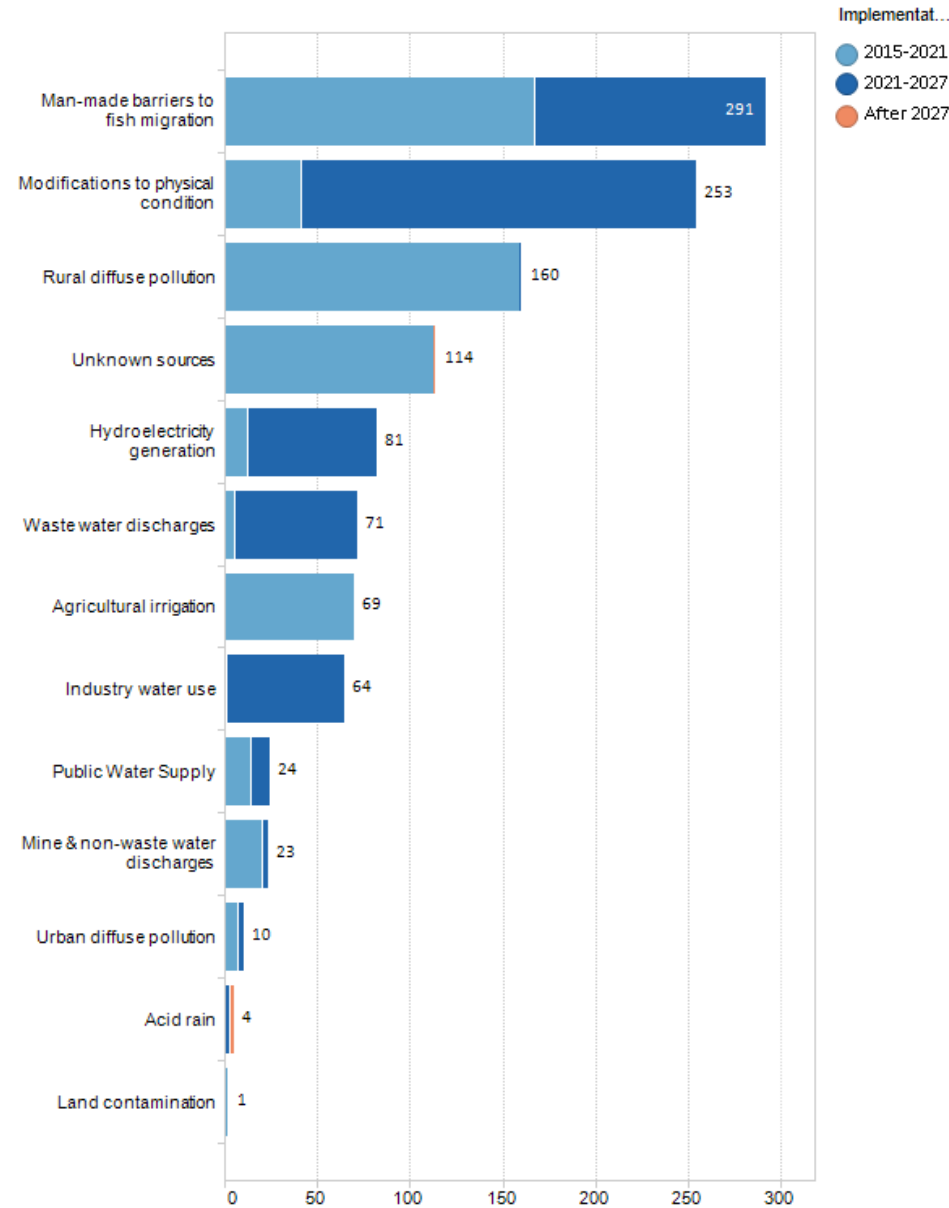
Information on the Overall condition of individual bodies of surface waters in 2014

Name	Overall
1; Forth and Clyde Canal (from Grahamsto...	Good
2; Forth and Clyde Canal (Rough Castle to...	Good
3; Forth and Clyde Canal (Wyndford to Ro...	Good
4; Union canal (Falkirk Wheel to Greenbank)	Moderate
5; Union canal (Greenbank to Kirk Bridge)	Moderate
6; Union canal (Kirk Bridge to Park Farm)	Good
7; Union canal (Park Farm to Craigton)	Good
8; Union canal (Craigton to Murray Burn)	Good
9; Union canal (Murray Burn to Fountainbr...	Good
3000; River Almond (Maitland Bridge to Cr...	Poor
3001; River Almond (Breich Water conflue...	Poor
3002; River Almond (Foulshiels Burn to Br...	Poor
3003; River Almond (Source to Foulshiels...	Poor
3004; Gogar Burn (Union Canal to River Al...	Bad

Period in which action will be taken to address pressures affecting the overall condition of surface waters



Number of surface waters in which action will be taken to address pressures affecting Overall condition



How will this be delivered ?

- Scotland's plan, not just SEPA!
- Catchment working
- Increased delivery role for Responsible Authorities
- More tools including remedial measure notices, spot fines etc.

Engagement with partners

- AAG forum extended to a wider network
- Fewer formal meetings
- Focus on delivery partnerships/ focused groups
- Multiple benefits and efficiencies in delivery are key drivers
- Align engagement and delivery with other workstreams such as Flood Risk Management and Diffuse Pollution

Diffuse pollution

- Additional Priority catchments starting very soon all associated with Bathing Water PAs
- Starting in the Nairn area in August
- Focus Area investigations are being carried out during this cycle, includes Special Areas of Conservation, SACs and Shellfish Water Protected Areas, SWPAs

Physical condition

- The Water Environment (Remedial Measures) (Scotland) Regulations 2015 – 01/04/16
- Pilot catchments and integration with FRM measures
- Water Environment Fund, WEF
- Data gathering underway
- Rural straightening and rHMWBs

Most will require coordinated partnership approach across the catchment lead by a relevant public body or delivery group and present opportunities for multiple benefits.

Barriers to fish migration

- Active - CAR provisions/ licence review
- Assets - often not associated with a controlled activity but typically responsibility lies with local or national authority. Addressed through asset management programmes and remedial notices
- Historic – financial support through WEF

Most will require coordinated partnership approach lead by a relevant public body or delivery group.

Next steps

- Prioritising work and understanding resource availability with partners.
- More coordinated catchment based working – with partnership groups focused on delivery where needed.
- Maintain a wider network of stakeholders using AAG boundaries.
- Strengthen links with Flood Risk Management (both SEPA & LA).



Environment

- Air
- Biodiversity
- Climate change
- Energy
- Environmental data
- Land
- Radioactive substances
- Waste
- Water**
 - » Aquaculture
 - » Bathing Waters
 - » Classification
 - » Flooding
 - » Monitoring
 - » Rainfall
 - » River basin management planning
 - » Water levels
 - » Water environment fund
- Making the case for the environment

You are here: [Home](#) > [Environment](#) > Water

Water



Scotland's water environment is a unique resource and must be protected and managed to ensure it continues to be healthy, safe and sustainable.

Much of our water environment is already in a good condition and subject to fewer pressures than most other European waters.

However, there are a number of significant environmental problems including diffuse pollution, discharges, abstractions and historic physical alterations.

The [river basin management planning \(RBMP\)](#) process sets objectives to protect, manage and improve the water environment throughout the country. We are the lead authority in delivering the river basin management plans and their objectives.

We are also the lead authority for Flood Risk Management Planning and SEPA is the [flood warning authority for Scotland](#).

We monitor the water environment by assessing water [quality](#) and [quantity](#).

We monitor Scotland's [bathing waters](#) and we are committed to supporting Scotland in achieving full compliance with EC Bathing Water Directive Standards.

Protecting, managing and improving Scotland's water environment is also fundamental to safeguarding [biodiversity](#), ensuring that our unique aquatic wildlife is protected.

It is important that we maintain effective working relationships with partners, water users

Related items

- [Water environment hub](#)
- [SoE - Water](#)
- [Map View Water](#)
- [SEWeb - Water](#)
- [Environment Infographic \(animated\)](#)
- [Get Learning - Water](#)