



River Basin Management Planning

RBMP Update

June 2017

The update paper contains the following topics;

1	RBMP Data- where to look for what you need.....	1
2	RBMP Delivery Priorities.....	2
3	Shellfish waters.....	3

1 RBMP Data- where to look for what you need

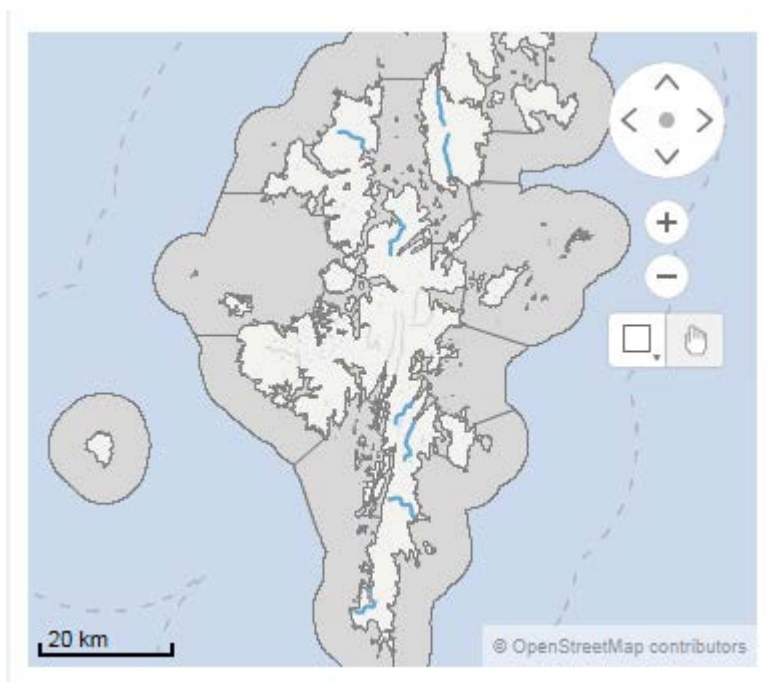
The second River Basin Management Plans were published using 2014 classification data. All of the information for the Scotland river basin district can be found in the [Water environment hub](#). It provides information on each waterbody, pressures, measures and the objectives (targets) that we have set. To view Shetland data, please set the local authority (under the Geographical filters section) to Shetland Islands.

The 2015 classification data will shortly be found at the SEWeb – water body classification page. Please note that if a waterbody has changed status it may not necessarily change an objective set in the RBMPs.

Figure 1 shows where we need to deliver improvements in Shetland's water environment.

Please contact Eilidh Johnston if you have any questions or queries about where to access the data you need, via ShetlandAAG@sepa.org.uk.

Figure 1 – Shetland water bodies where improvements need to be delivered to achieve good status



The 2014 RBMP data shows that 77 of Shetland's 87 surface water bodies are at good or high status. For the remaining waterbodies, nine are at moderate status and one at poor status. Eight of these water bodies are affected by rural diffuse pollution, one (Burn of Laxobigging) by a barrier to migratory fish, and one (Burn of Roerwater) by water abstraction and flow regulation. The 2015 classification has seen improvements to some of the water bodies with diffuse pollution pressures, and the classification of Burn of Laxobigging. Changes in classification will be discussed at the meeting on 15 June 2017.

2 RBMP Delivery Priorities

The second RBMPs set out Scotland's objectives for protecting and improving water bodies up to 2027. In the second cycle (2016 - 21) the plans include objectives to improve the physical condition of 52 water bodies and ease fish passage across 76 historic barriers to fish migration. The plans recognised that this would require a significant increase in funding.

In the current climate of public sector budget constraints, we are now planning for a scenario where funding levels and timing are different from those original assumptions. We therefore need to prioritise projects for delivery based on this level of funding.

The Water Environment Fund has published updated funding guidance and priorities as a result of this process – see www.sepa.org.uk/environment/water/water-environment-fund/ The fish barrier on the Burn of Laxobigging is currently on this list, and we are currently scoping priority fish barriers to decide on next steps.

3 Shellfish waters

The river basin management plan showed that only nine of Shetland's shellfish water protected areas met their target objectives, while 12 did not. This is shown in Figure 2, and further information on shellfish water protected areas, including maps, is available at www.gov.scot/Topics/Environment/Water/15561/ShellfishWaters

To address this, additional work is about to be undertaken to investigate pressures at Cat Firth and Wadbister Voe. Further monitoring, research and investigation is planned, along with work to reduce rural diffuse pollution. A more detailed national paper on Shellfish Waters is available for those who would like more information.

Figure 2 – Shellfish Waters in Shetland (green sites are at target objective, orange sites are below target objective of good)

