

Bathing Water Profile for Rosehearty

Rosehearty, Scotland

Current water classification <https://www2.sepa.org.uk/BathingWaters/Classifications.aspx>

Description Rosehearty bathing water is situated adjacent to the town of Rosehearty in Aberdeenshire. The sandy beach is approximately 1 km long and nestles between the harbour to the west and rocky outcrops to the east. It and is backed by Rosehearty golf course.

During high and low tides the approximate distance to the water's edge can vary from 0–360 metres.



Site details	Local authority	Aberdeenshire Council
	Year of designation	1999
	Water sampling location	NJ 93391 67651
	EC bathing water ID	UKS7616048

Catchment description

The catchment draining into the Rosehearty bathing water extends to 1.5 km². The catchment varies in topography from gentle hills (maximum elevation 65 metres) in the south to the low-lying areas (average elevation 5 metres) along the coast.

There are no main rivers discharging into the designated bathing water. However, there is a culverted water course/road drain adjacent to the golf course which discharges into the bathing water.

There is a Site of Special Scientific Interest located partially within the bathing water catchment.

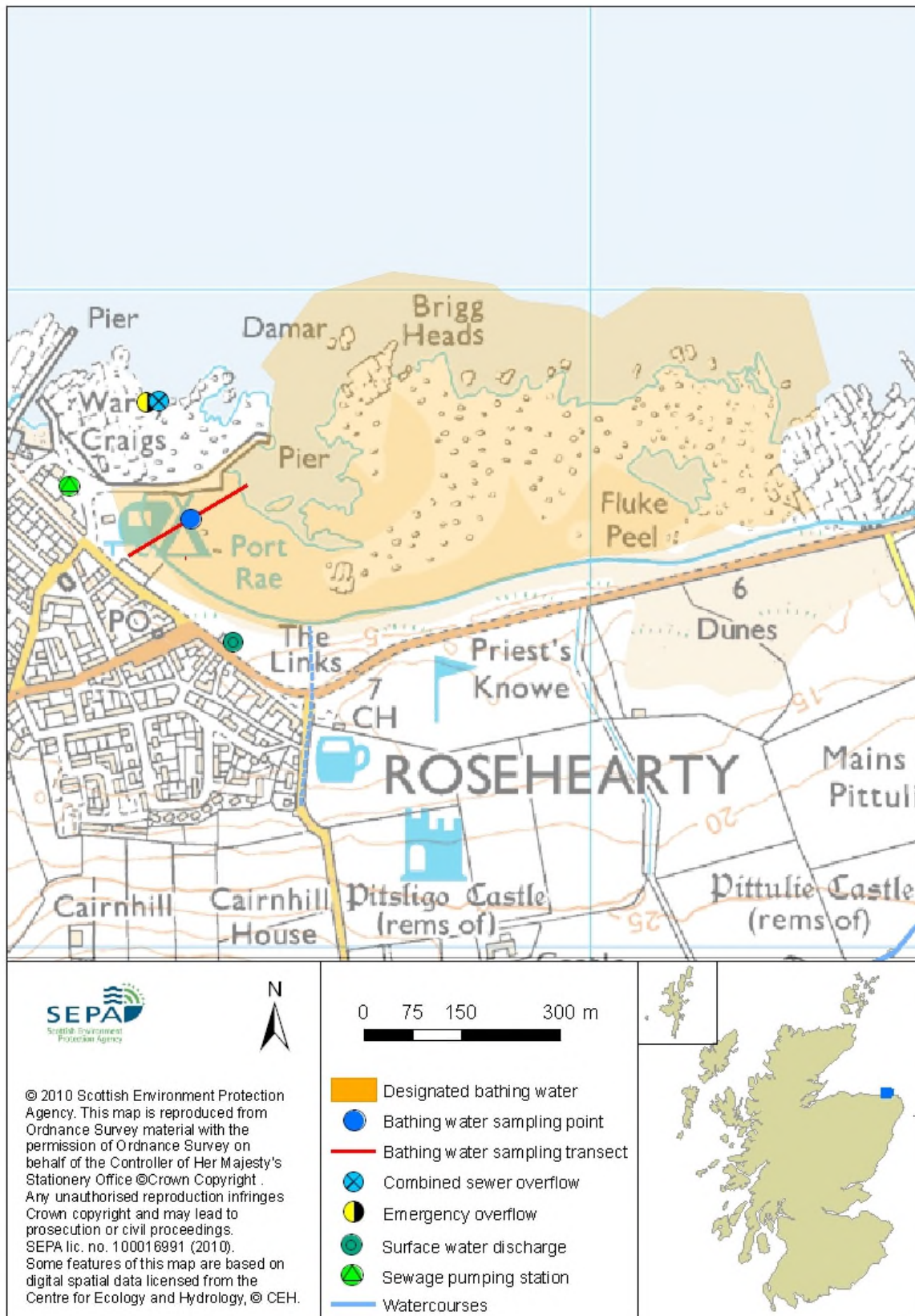
Rosehearty bathing water catchment lies within a Nitrate Vulnerable Zone.

Risks to water quality

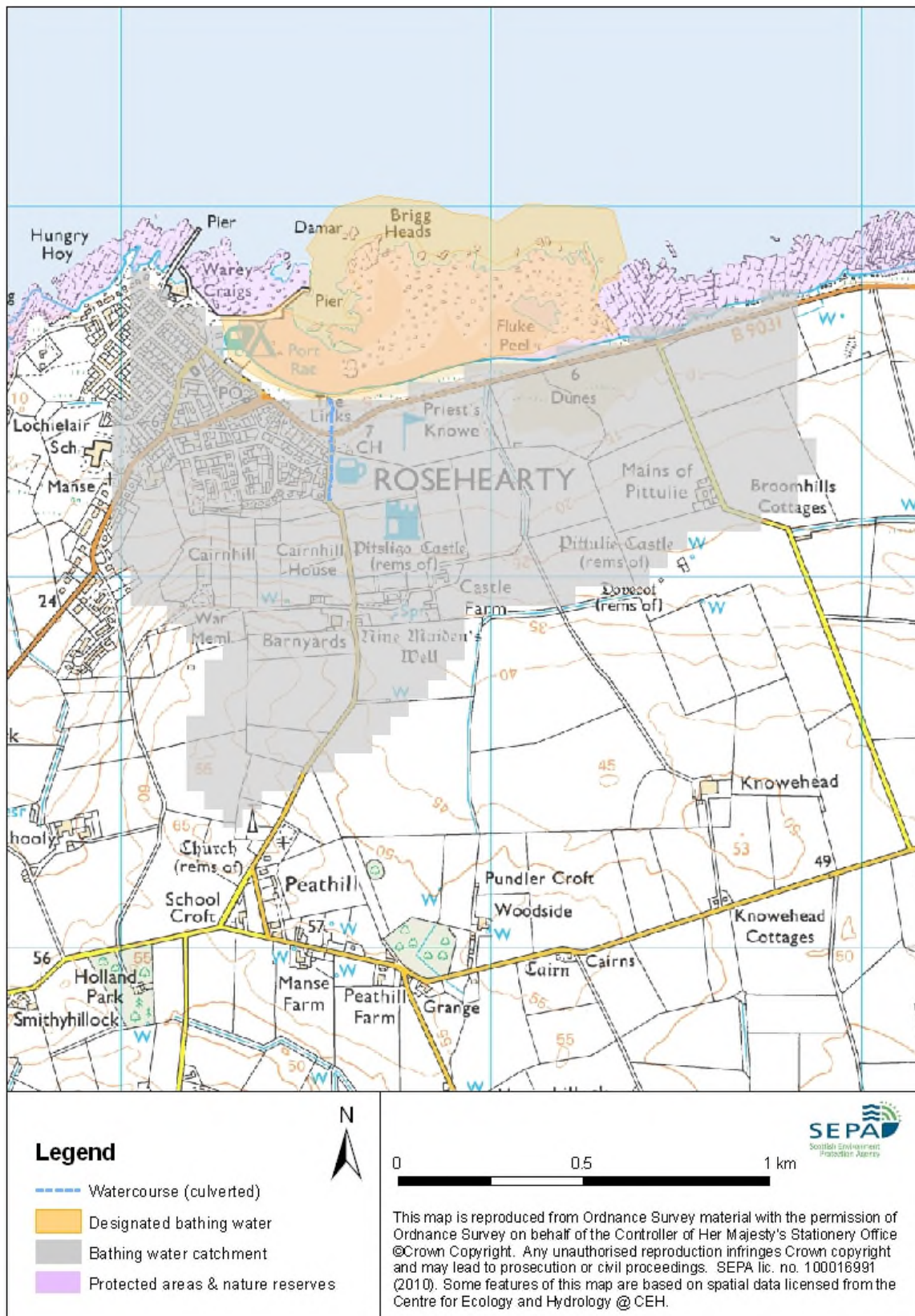
The principal risks and source of wet weather driven short term pollution at this bathing water arise from agricultural run-off, combined sewer overflows and treated sewage effluent.

Our regulatory and scientific assessment indicates that potential sources of short-term faecal indicator pollution at this bathing water can at times originate from human or animal sources.

Map 1: Rosehearty bathing water



Map 2: Catchment draining into Rosehearty bathing water



Improving bathing water quality

Improving diffuse pollution from agricultural sources

Rosehearty bathing water is within the Buchan Coastal catchment. Farm visits were undertaken in the catchment during 2014. These visits looked to identify diffuse pollution sources and pathways by which pollutants could impact on bathing waters. Discussions took place with land manager to agree appropriate mitigation measures.

Rosehearty bathing water catchment lies within a Nitrate Vulnerable Zone and as such will already have measures in place to reduce and prevent further nitrate contamination.

Improving pollution from sewage and other discharges

Scottish Water provides most waste water collection and treatment services in Scotland.

The only discharge within the immediate vicinity of the bathing water is an intermittent discharge from Rosehearty pumping station. Under wet weather or emergency conditions this discharge has the potential to affect the bathing water quality. We carry out joint inspections with Scottish Water of this discharge before the bathing season to verify that appropriate measures are in place to protect the bathing water.

Cyanobacteria (blue-green algae)

Marine waters are not at risk of cyanobacteria overproduction.

Algae

Current information suggests that this bathing water is not at risk of excessive growth of macroalgae (seaweed) or phytoplankton.

Jellyfish

There is a possibility of increased numbers of jellyfish in the water during summer months. This is a naturally occurring phenomenon. Most species common to the UK are harmless. The Marine Conservation Society advises to 'look but don't touch'.

Responding to pollution incidents

Please use our 24 hour hotline (0800 80 70 60) to report pollution. SEPA will investigate the incident and contact other relevant organisations. That may include Scottish Ministers, Scottish Water, the local authority and the relevant health board. Where necessary, measures will be put in place to resolve the problem.

If beach users or bathers are considered to be at risk, the local authority will warn the public by erecting signs at the bathing water. Information will also be available on our website.

SEPA will investigate whenever our sampling identifies pollution.

Beach users are encouraged to use the bins provided or to take litter home. Beach cleaning and litter clean-up is maintained by Aberdeenshire Council for this bathing water.

Contact details and information sources

SEPA Fraserburgh office Shaw House Mid Street Fraserburgh AB43 9JN 01346 510502 www.sepa.org.uk	Aberdeenshire Council Woodhill House Westburn Road Aberdeen Aberdeenshire AB16 5GB 08456 081207 www.aberdeenshire.gov.uk	Keep Scotland Beautiful 01786 471333 beach@ksbscotland.org.uk www.keepsotlandbeautiful.org
Scottish Government Victoria Quay, Edinburgh, EH6 6QQ 0131 244 0396 eqcat@scotland.gsi.gov.uk www.scotland.gov.uk/Topics/Environment/Water/15561/bathingwaters		

Version number:	Date:	Next review due:
1.0	September 2010	
1.1	May 2014	
1.2	April 2015	
1.3	April 2020	