

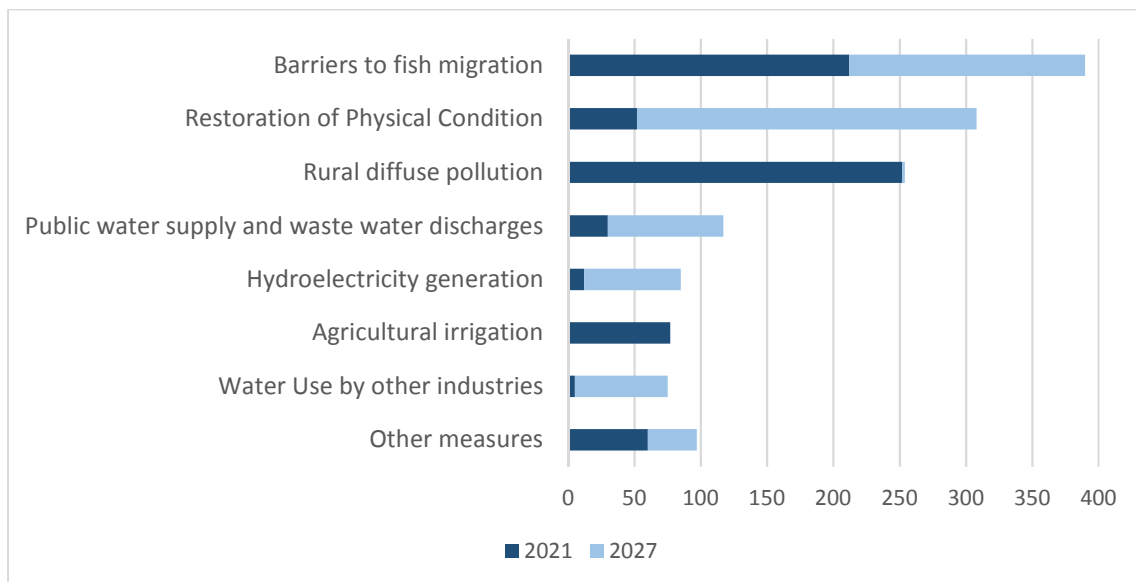


Advisory Group Network Update

SPRING 2019

RBMP Delivery Update

The [second RBMPs](#) set out a programme of 1403 improvement measures up to 2027. These are broken down as follows:



Work is complete to remove or ease 18 **fish barriers**, opening up several hundred kilometres of rivers to migratory fish. Scoping and design work is underway on a further 209 fish barriers.

Four **river restoration projects** have been delivered on the Eddleston Water in the Scottish Borders, Pow Burn in Angus, Stane Gardens in North Lanarkshire and the River Nairn in the Highland Council area. A further 19 projects are currently under development across Scotland. Projects are prioritised and developed into projects either through the Water Environment Fund, [WEF](#).

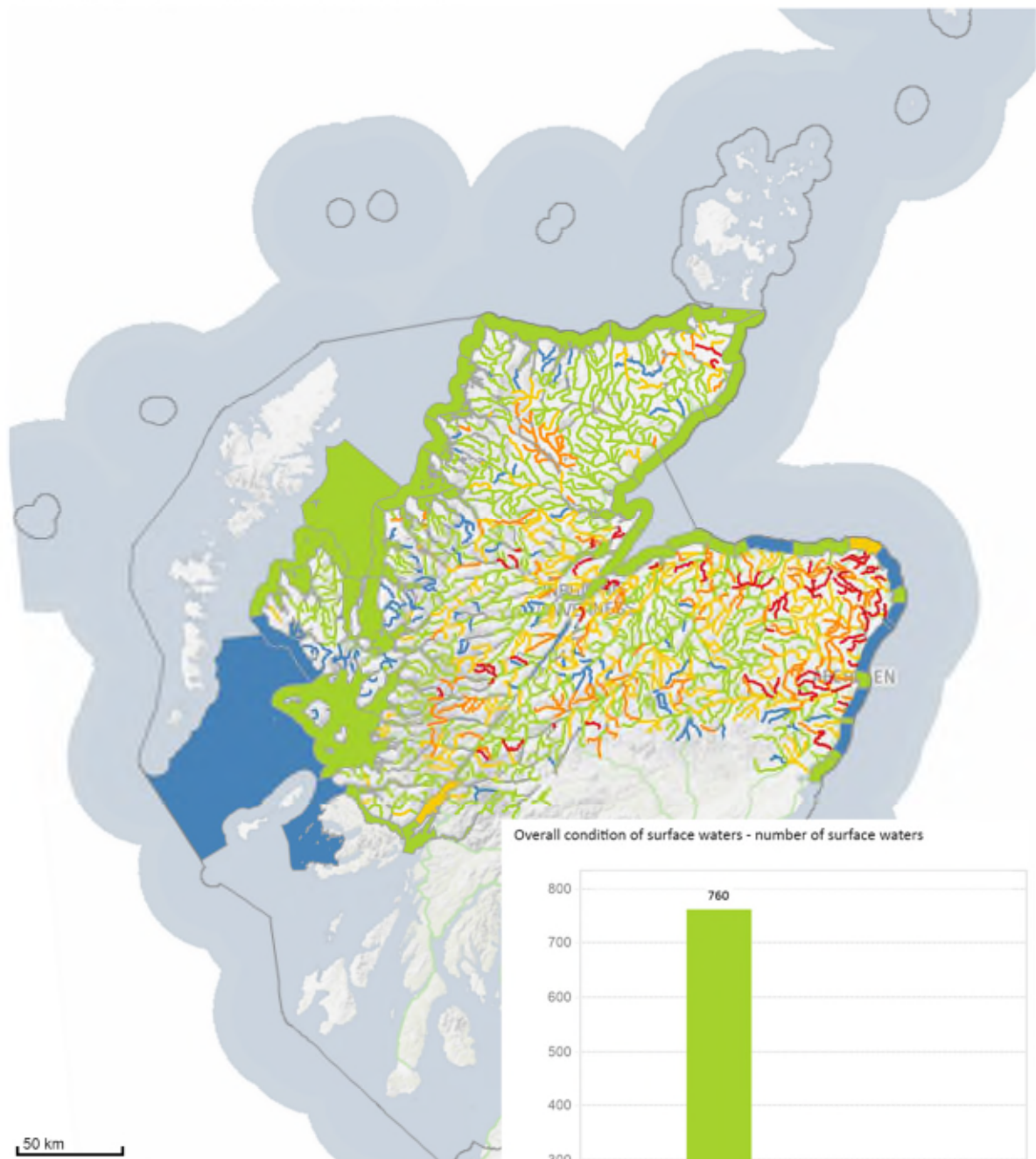
Examples of case studies for restoration of physical condition and access for migratory fish can be found here; https://www.sepa.org.uk/media/413209/wef_case_studies.pdf

Action to reduce **rural diffuse pollution**, by working with land managers to improve compliance with General Binding Rules is underway in 39 priority catchments. Action in a further 14 catchments is yet to start but is on track for completion by 2021. The 2012 [rural diffuse pollution plan](#) for Scotland aims to ensure that the key stakeholders in Scotland work in a co-ordinated way to reduce diffuse pollution from rural sources. The plan was updated following the publication of the second River Basin Management Plans in 2017 [Rural Diffuse Pollution Delivery Plan](#).

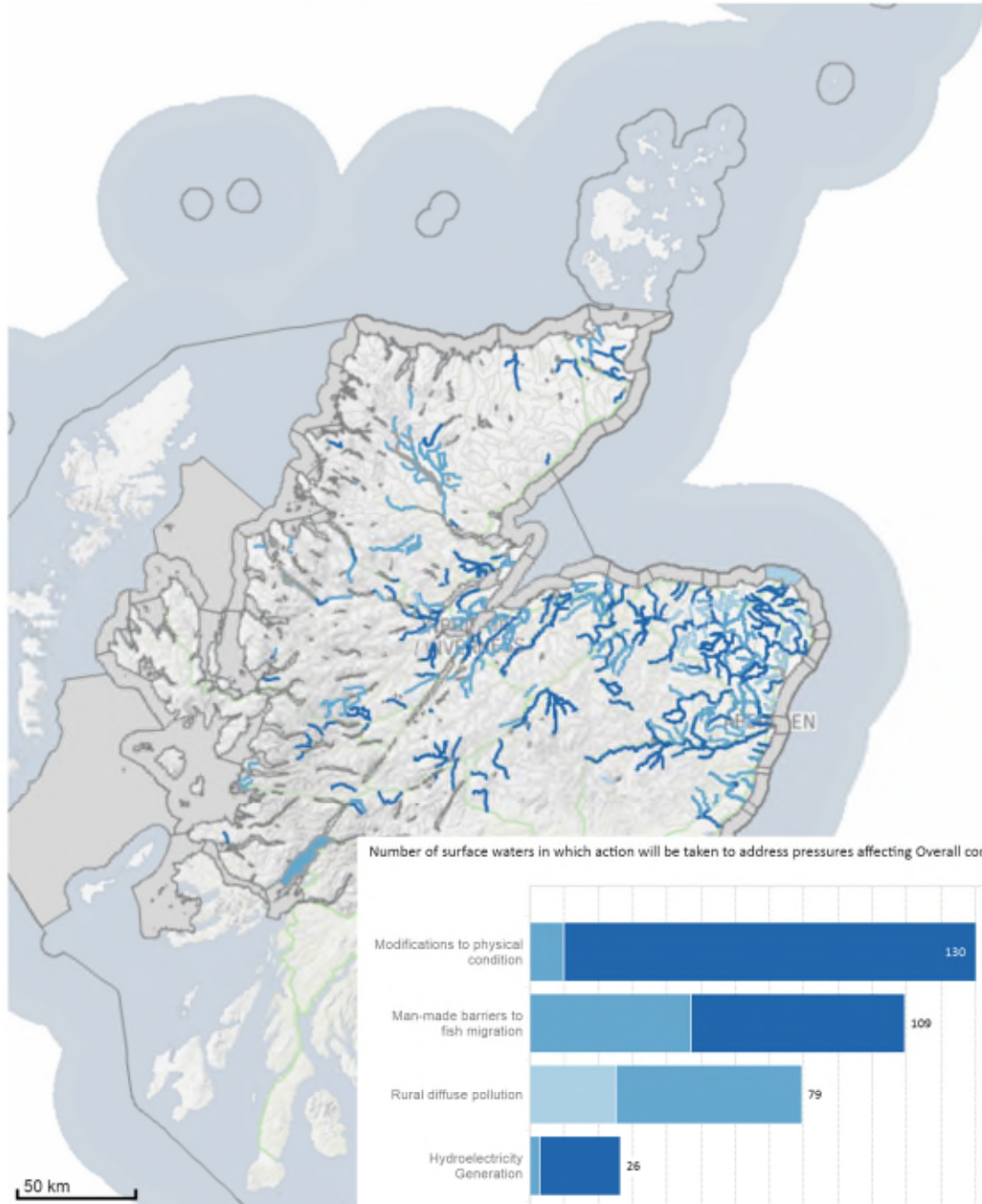
Regulatory measures to tackle impacts through hydro-electricity generation, waste water discharges, urban diffuse pollution and impacts from other industries are progressing. Agreement of controls for agricultural irrigation have been introduced on 9 water bodies and this process is on track for completion in the remaining 68 water bodies by 2021.

North of Scotland

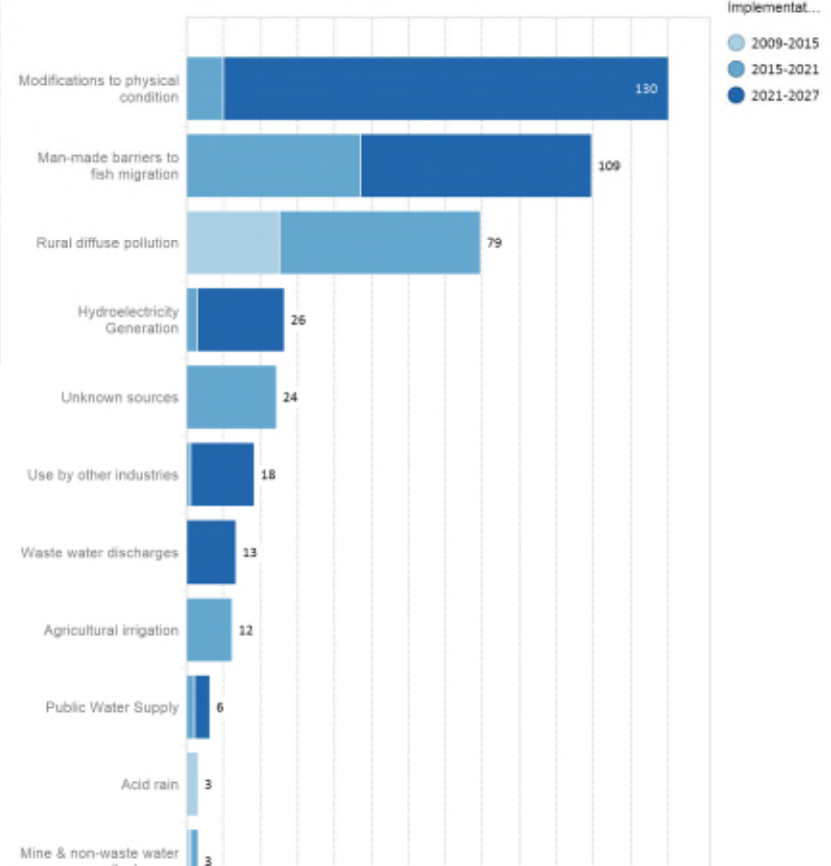
This map displays the overall condition of bodies of surface waters in 2014
©Crown Copyright. SEPA Licence Number 100016991 (2015).



Period in which action will be taken to address pressures affecting the overall condition of surface waters
 © Crown Copyright. SEPA Licence Number 100016991 (2015).



Number of surface waters in which action will be taken to address pressures affecting Overall condition



SEPA's Delivery Mechanisms

SEPA has undertaken some changes to our regulatory model that will help us deliver our RBMP objectives. [One Planet Prosperity](#) – SEPA's new regulatory strategy outlines how we can protect and improve our environment while creating social and economic success for Scotland. The principles are intrinsically linked with those of the RBMP process.

This involves moving from a single site approach to sector based solutions. Sector plans are at the heart of delivering our one planet living aspirations, and aim to shape our interactions with every industry sector we regulate and the businesses within them.

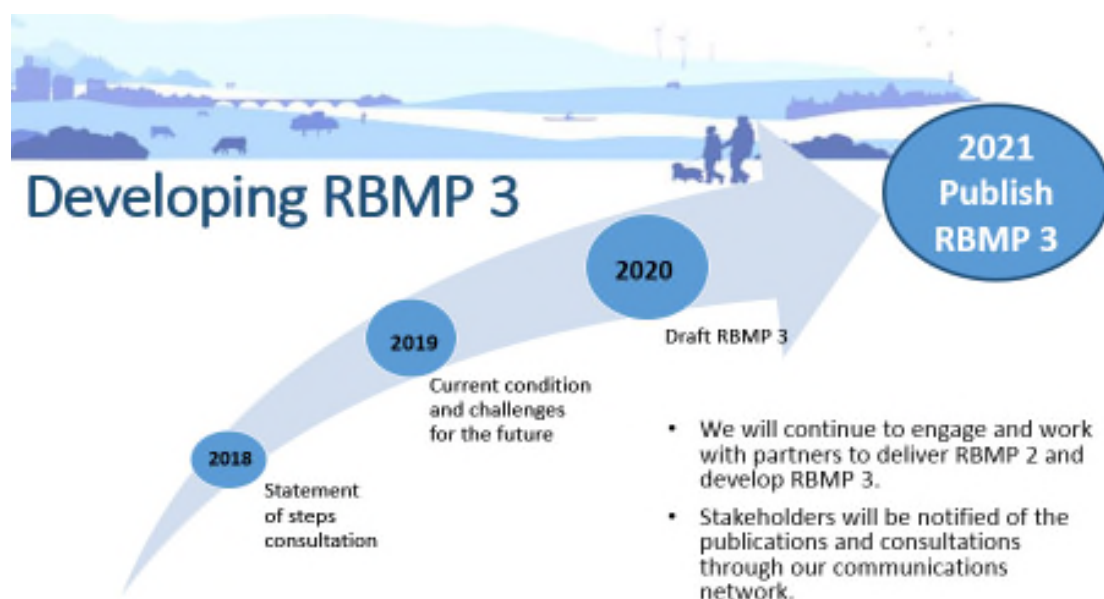
For every sector we regulate, we will have two simple aims. These are to ensure that:

- every regulated business fully meets their compliance obligations, and
- as many regulated businesses as possible will go beyond the compliance standards.

[Sector plans](#) will identify the compliance issues that need to be tackled by the sector, including the RBMP objectives and where the biggest opportunities are for us to help the sector to go beyond compliance. This will help regulated businesses operate successfully within the means of one planet.

We are preparing sector plans for every sector that we regulate, which will be published over the next two years.

Developing the Third RBMPs



Alongside progressing the delivery of our RBMP objectives we ran a consultation about how you can be involved in the development of the next set of river basin plans for the Scotland and Solway Tweed districts (due in 2021). The consultations set out the milestones to the next iteration of river basin plans, our interaction methods with stakeholders and links to other plans and policies.

Responses were received from a variety of well-informed stakeholders who agreed with the proposed consultation steps and timescales set out in the consultation. The respondents were very supportive of the proposed partnership approach and integration with plans and policies. They felt this was the most efficient way to use resource and delivery multiple benefits. Some respondents sought clarification about the format of engagement and more detail about how RBMP would be integrated into other plans and policies.

Given the supportive nature of the responses SEPA will progress with the proposals outlined.

SEPA will publish a communication and engagement strategy geared to the publication of the third plans to provide further detail to stakeholders.

Please go to the SEPA website at <https://www.sepa.org.uk/environment/water/river-basin-management-planning/publications/>

We are now working to develop the Current Condition and Challenges for the Future documents for Scotland and the Solway Tweed district that will be published for consultation later this year. This will include:

- a description of the current condition of the water environment
- an assessment of the progress towards achieving the improvement targets set for 2021; and
- identification of significant water management challenges.

This will provide the foundation for the development of the draft third plans in 2020.

Overlaps with the Flood Risk Management Plan timescales can be seen in **Appendix 1**.

RBMP Data and Information

All of the information for river basin planning can be found in the [Water environment hub](#). It provides information on each waterbody, pressures, measures and the objectives (targets) that we have set.

The latest classification data can be found at the [Water classification hub](#). Please note that if a waterbody has changed classification it may not necessarily change an objective set in the RBMPs

RBMP Contact

Please [contact us](#) if you have any questions or queries.

Appendix 1

