

Change in benthic monitoring requirements

Existing benthic ecology monitoring

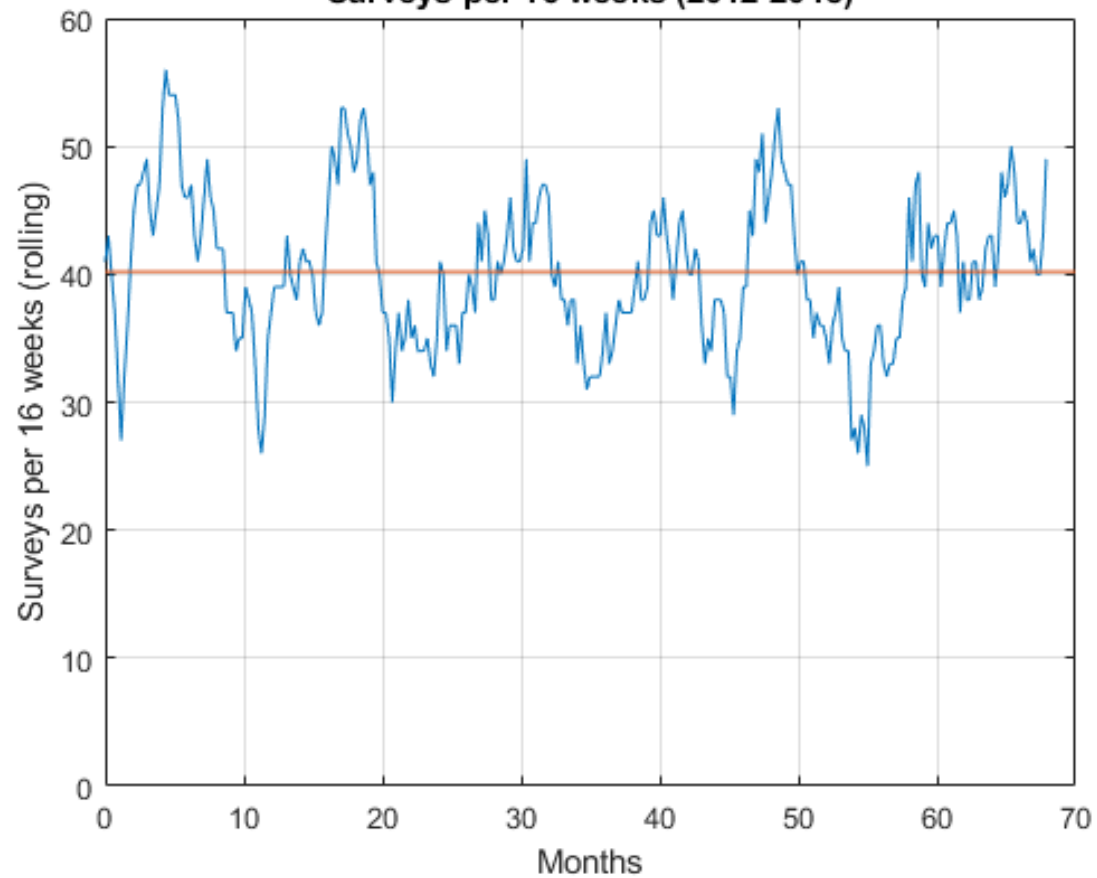
- 6 seabed samples, once per growth cycle

Future benthic ecology monitoring

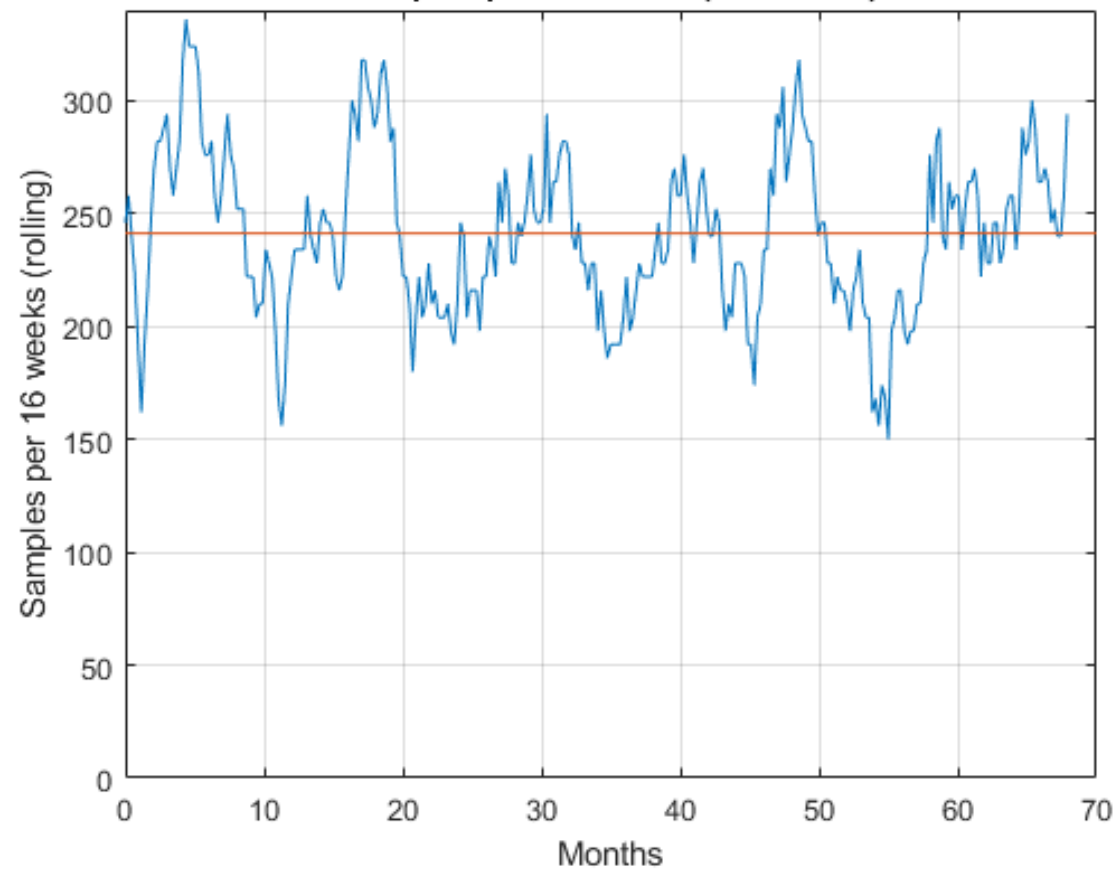
- 28 seabed samples, once per growth cycle

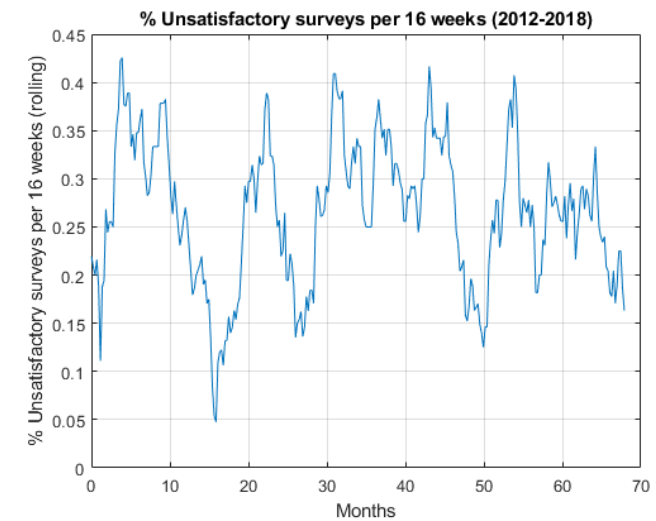
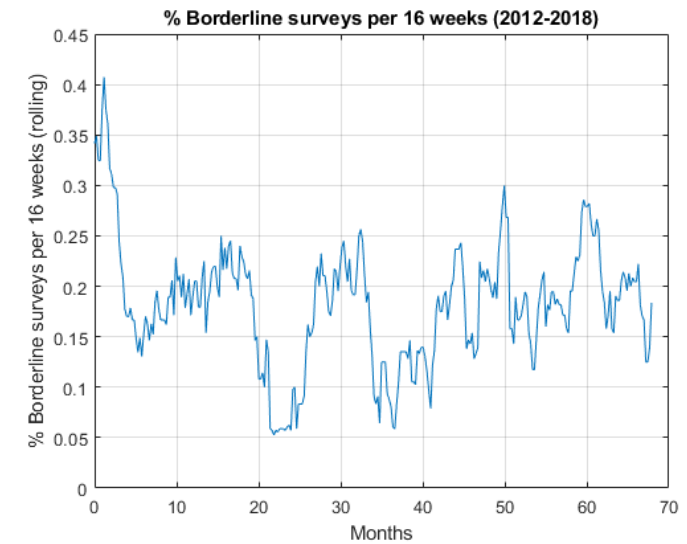
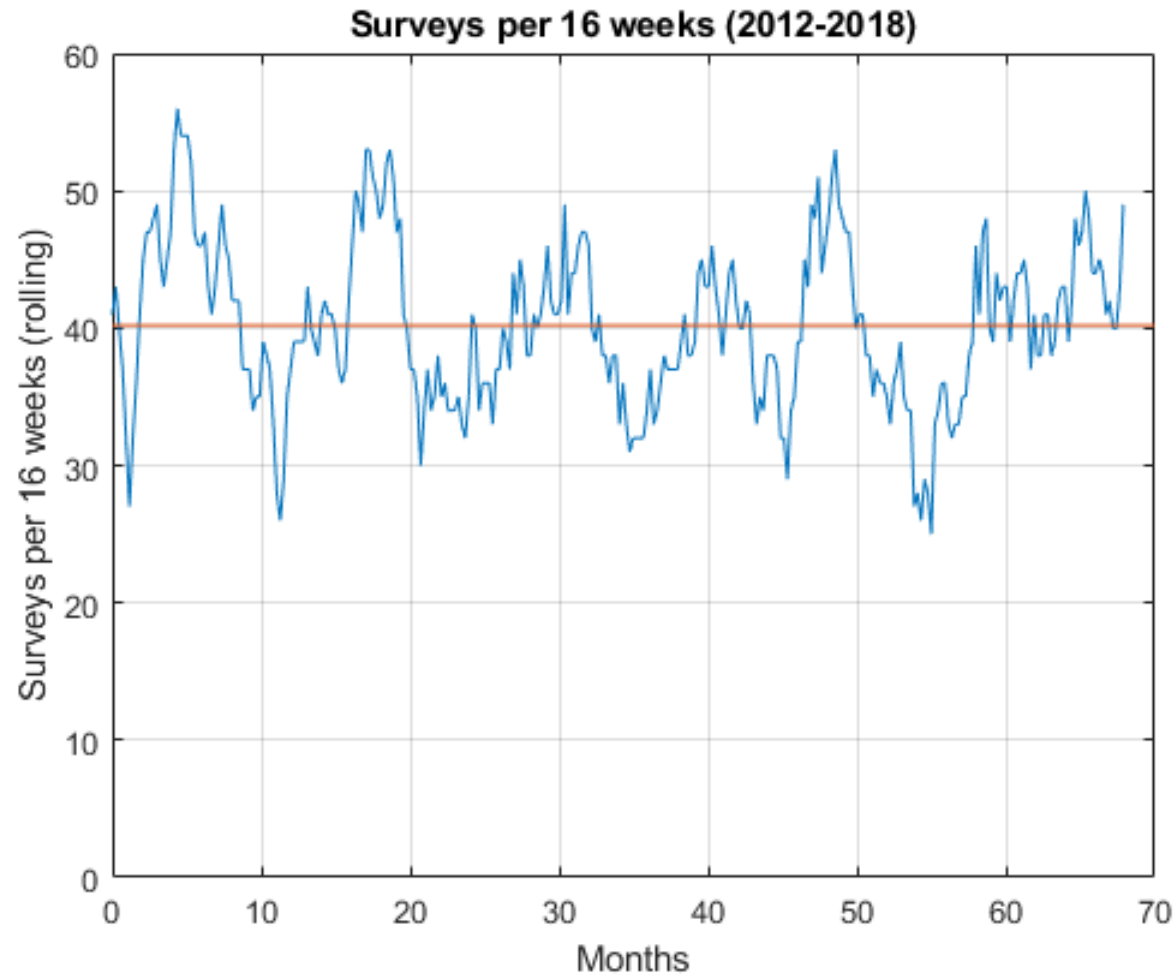
How can we scale up from old requirements to new?

Surveys per 16 weeks (2012-2018)



Samples per 16 weeks (2012-2018)

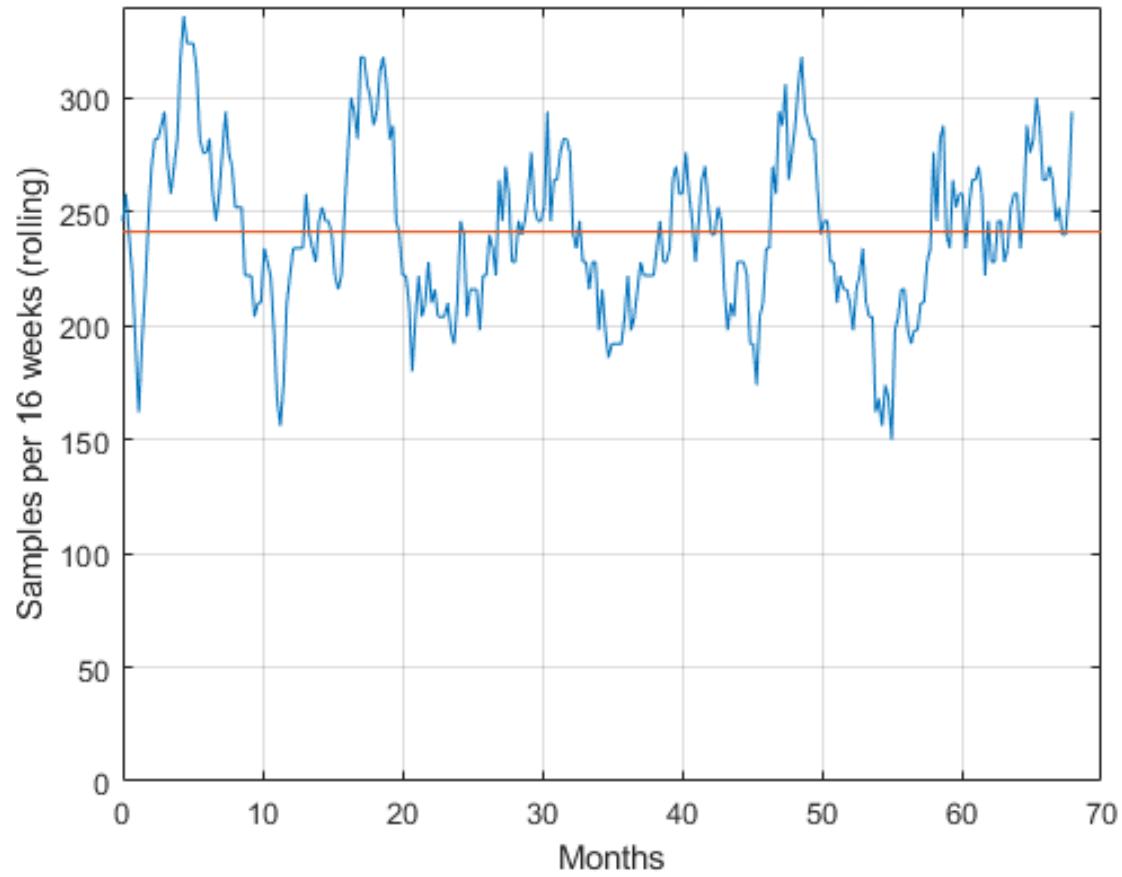




Incremental growth in monitoring

- June 2020: *unsatisfactory* sites required to collect **28 samples** within **16 week window**
- January 2021: *unsatisfactory AND borderline* sites required to collect **28 samples** within **16 week window**
- January 2021: *Satisfactory* sites required to collect **28 samples** within **32 week window**
- January 2022: All sites required to collect 28 samples within 16 week window

Samples per 16 weeks (2012-2018)



Projected samples per 16 week period

