

Overview of our response to the sector plan consultation

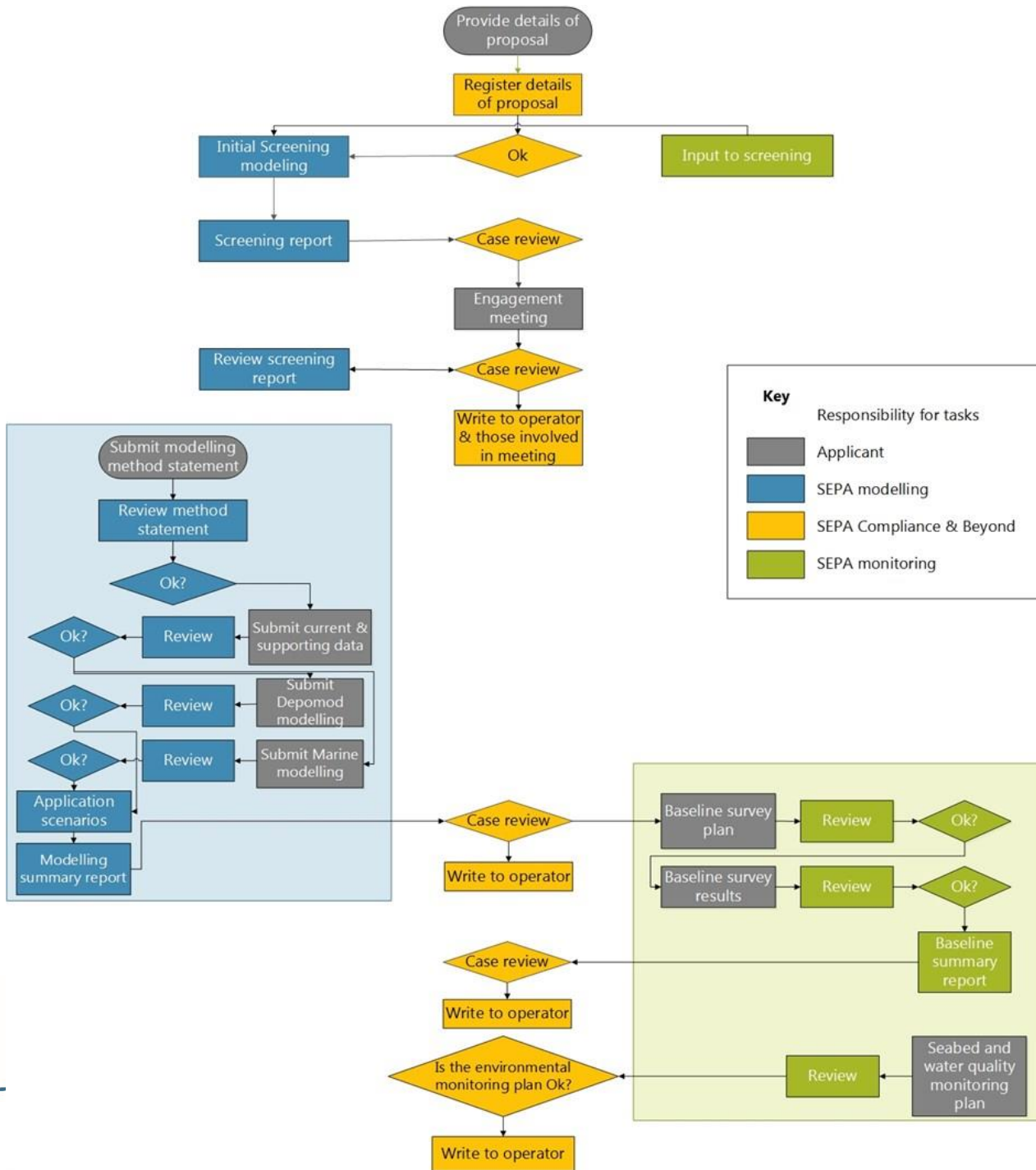
Mike Montague

1 June 2019

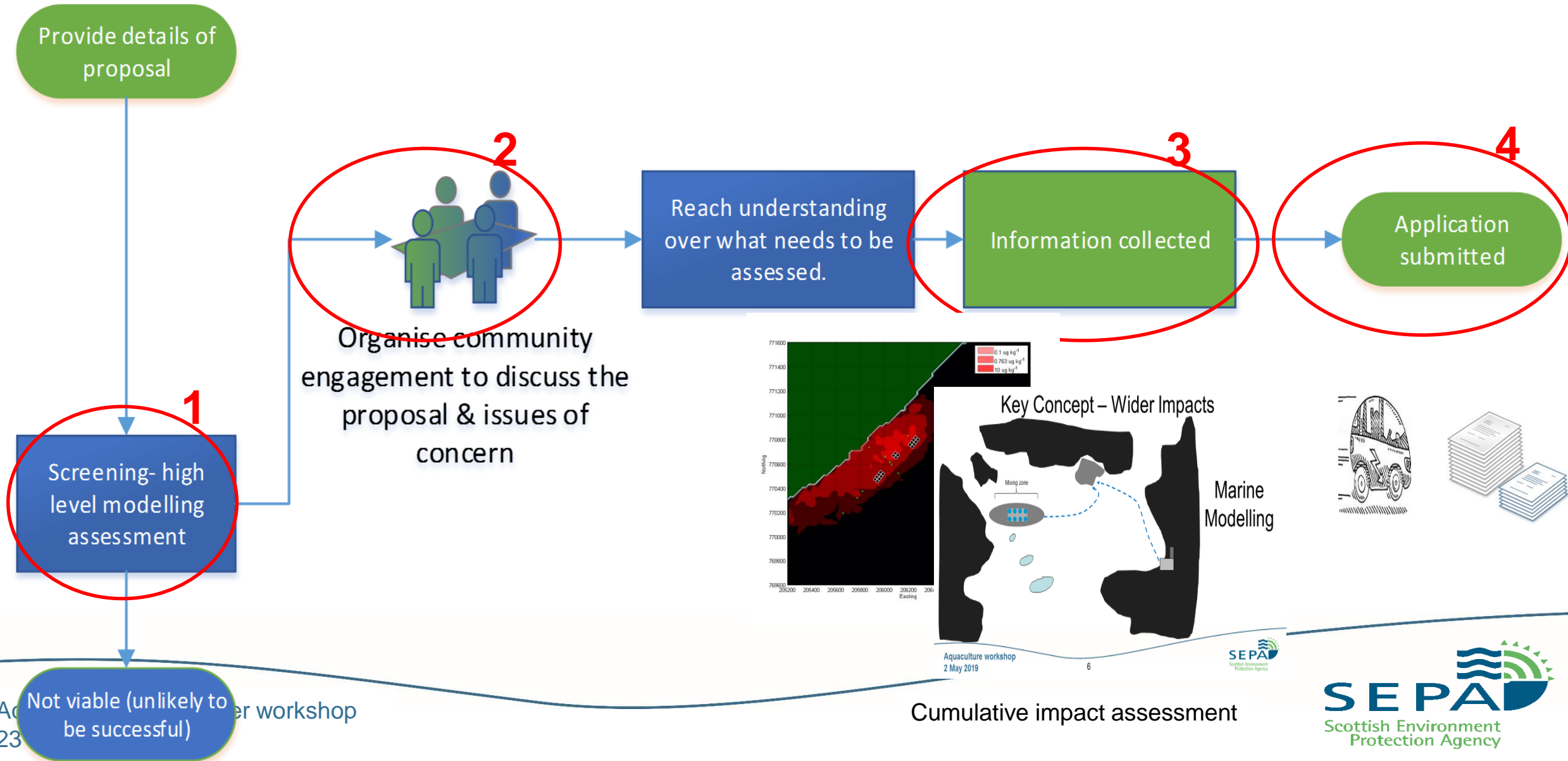
PROTECTION OF THE MARINE ENVIRONMENT

DISCHARGES FROM MARINE PEN FISH FARMS

A STRENGTHENED REGULATORY FRAMEWORK



Regulatory Framework



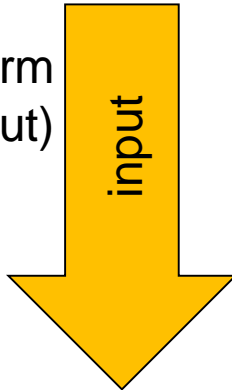
23 Aquaculture workshop

Cumulative impact assessment

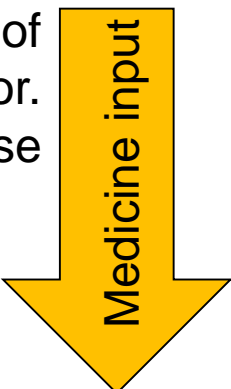


Controlling main impacts

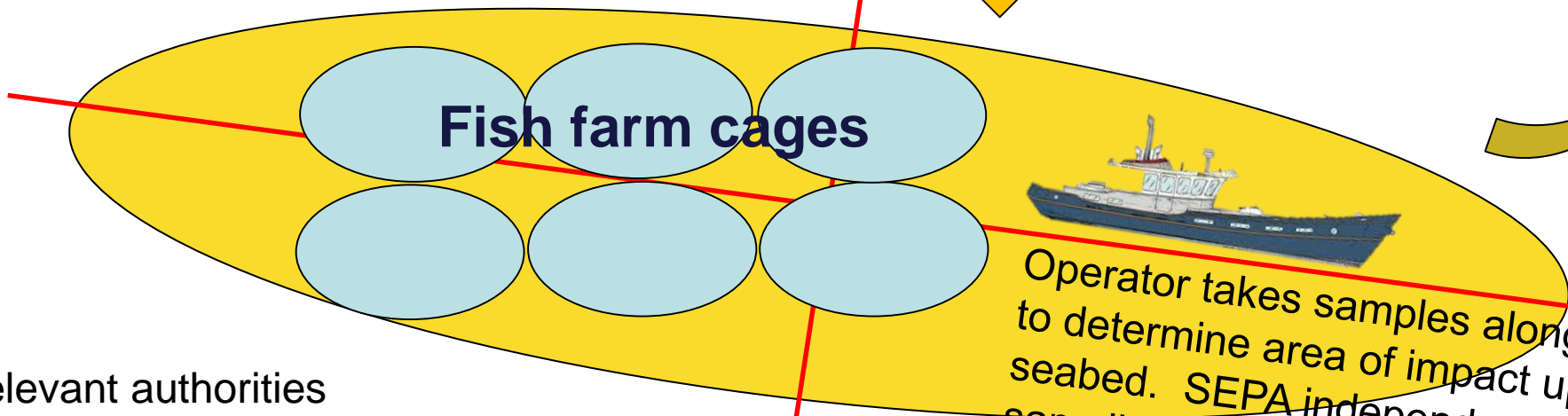
Limit scale of farm (biomass/feed input)



Pre-notification with audit of records of supplier & operator. Occasional inspection of use



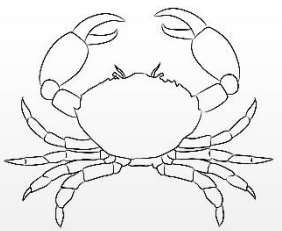
SEPA monitors predicted cumulative impacts (benthic & nutrients).



Fish farm cages

Operator takes samples along transects to determine area of impact upon seabed. SEPA independent audit sampling.

Relevant authorities monitor possible sensitive receptors



SEPA introduces quality assurance scheme for monitoring/ analysis.

Regulatory Framework: June 19 to June 20

Compliance & enforcement



Biomass & feed consultation



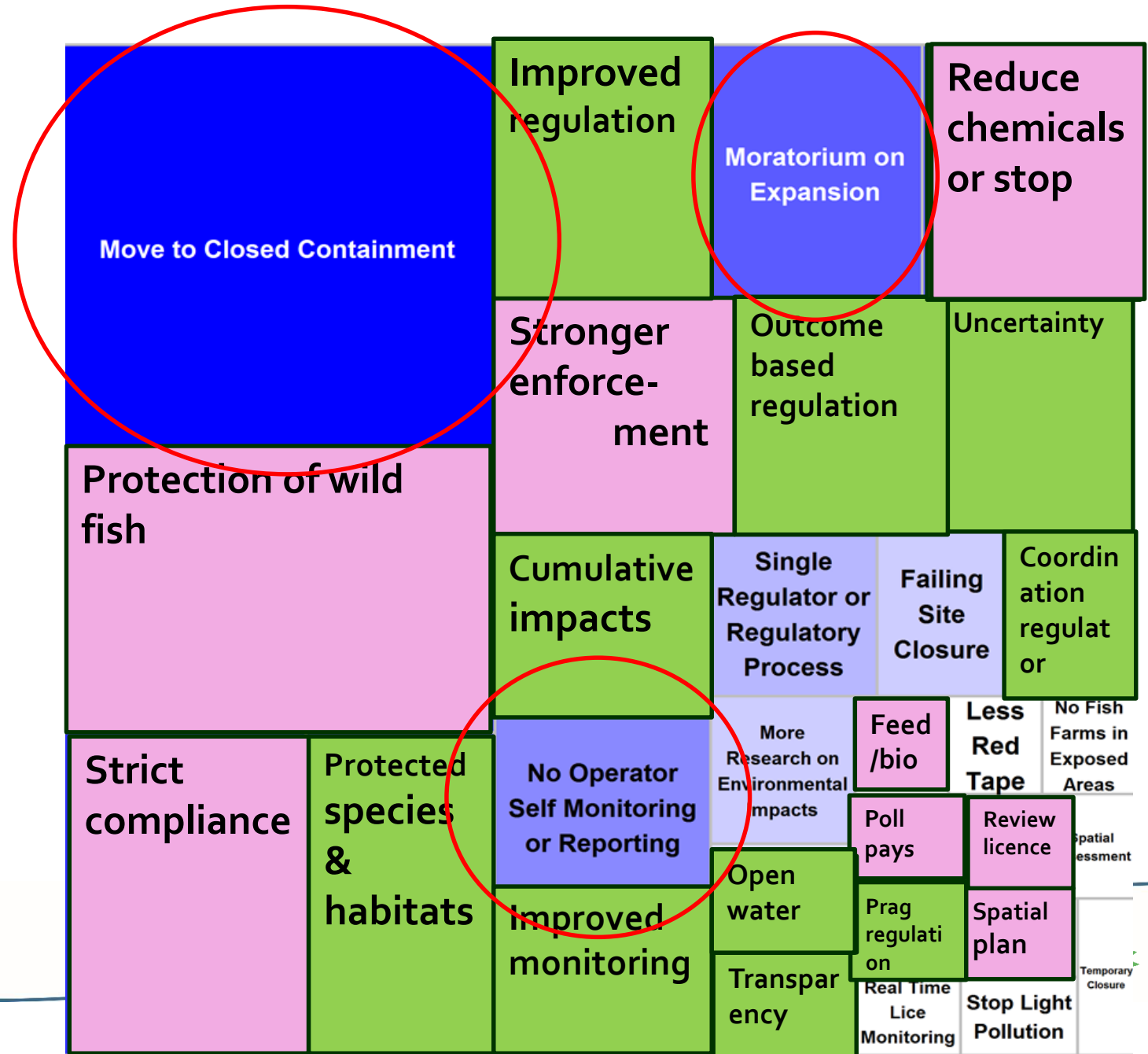
Charging consultation



November 2018 consultation Feedback

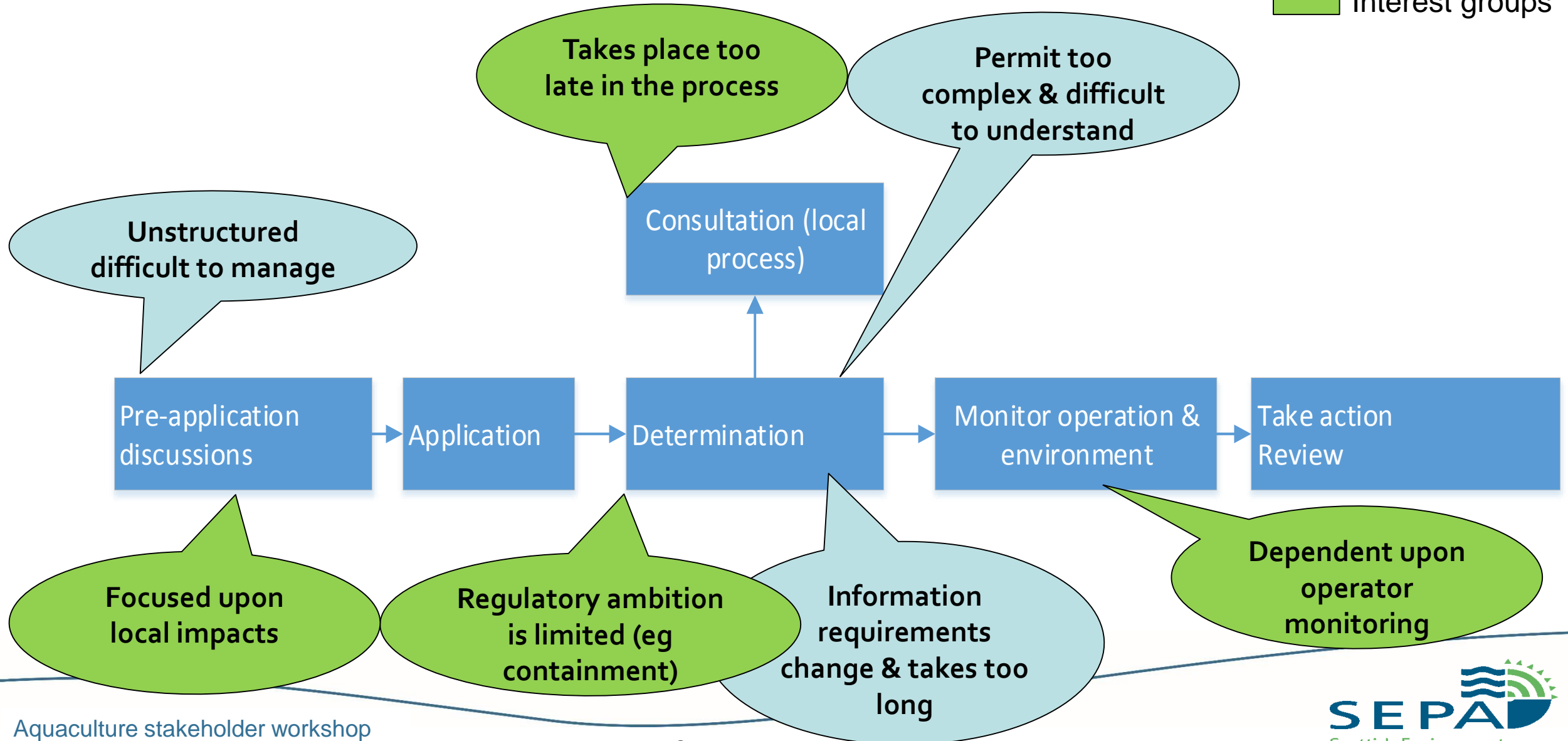
Move to Closed Containment		Improved Regulation	Moratorium on Expansion	No or Reduced Chemical Use		
		Stronger Enforcement	Outcome Based Regulation	Uncertainty Managed with Precautionary Principle		
Protection of Wild Fish		Cumulative Impacts in a Water Body	Single Regulator or Regulatory Process	Failing Site Closure	Improved Coordination Between Regulators	
			No Operator Self Monitoring or Reporting	More Research on Environmental Impacts	Feed Limits	Less Red Tape
Strict Compliance	Protection of Protected Species & Areas	Improved Monitoring	Move to Open Water Sites	Polluter Pays	Review of All Licences	Spatial Assessment
			Transparency in Regulatory Outcomes	Pragmatic Regulation	Spatial Planning	Temporary Closure
				Real Time Lice Monitoring	Stop Light Pollution	

What will we achieve by end of June 2020



Current framework

- Operators
- Interest groups



Future framework

