

Water Situation Report

22nd July 2021

HEADLINE

Helmsdale and Naver have been raised to Significant Scarcity.

Wick, Cree, Doon, Ayr and Irvine along with Outer Hebrides have been raised to Moderate Scarcity.

Findhorn, Ythan, Clyde and Arran have been raised to Alert.

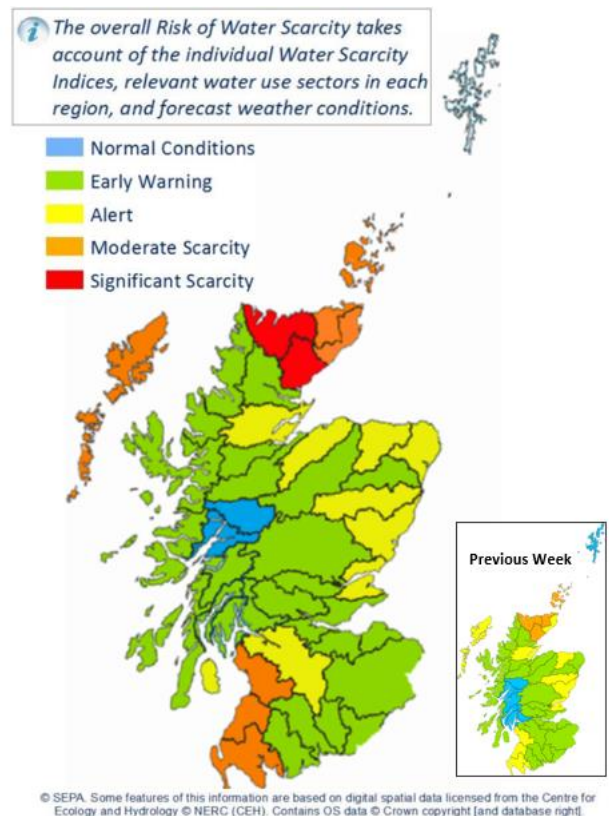
Early Warning is in place across the rest of the country with the exception of Loch Linnhe and Lochy which remain in normal conditions.

Situation Summary

Dry ground conditions and low river levels are widespread across Scotland following a week of limited or no rainfall across the country.

Helmsdale and the Naver areas have been raised to Significant Scarcity and Cree, Wick, Doon, Ayr and Irvine along with the Outer Hebrides have been raised to Moderate Scarcity level. The deterioration is due to a combination of prolonged dry soil moisture and low surface water flows.

Findhorn, Ythan, Clyde and Arran are now at Alert level and large areas with Argyll and Bute along with the Leven catchment are now in Early Warning due to dry soil conditions and low river flows.



Issues with private water supplies have been reported in South Ayrshire and Arran.

Due to a problem with data availability in Shetland, the Water Scarcity level for Shetland has changed from Normal Conditions to No Data.

Very little rainfall is forecast for Scotland over this coming weekend. Although some rain showers are forecast across East of Scotland next Monday, the situation is most likely to worsen.

Groundwater levels are falling as normal for the summer and so far remain within the normal range for the time of year.

SEPA is monitoring the situation closely and coordinating steps to manage water resources in line with Scotland's National Water Scarcity Plan which is available on SEPA's website: <https://www.sepa.org.uk/environment/water/water-scarcity/>.

Advice for water users

Water sources used for irrigating farm land are at risk of becoming limited in the Alert and Moderate areas. We are urging farmers in these areas, especially if taking water from burns and small rivers, to:

- Only irrigate when, and only as much as, absolutely necessary.
- Make sure irrigation equipment isn't leaking.
- Try to irrigate at night to reduce evaporation losses.
- Explore how you and your neighbours in the same river catchment could avoid irrigating at the same time.
- Consider whether you could switch to using groundwater rather than river water if conditions worsen. If you would need a new borehole to do this, your local SEPA office will be able to help and advise.

Managers of golf courses are asked to do the same.

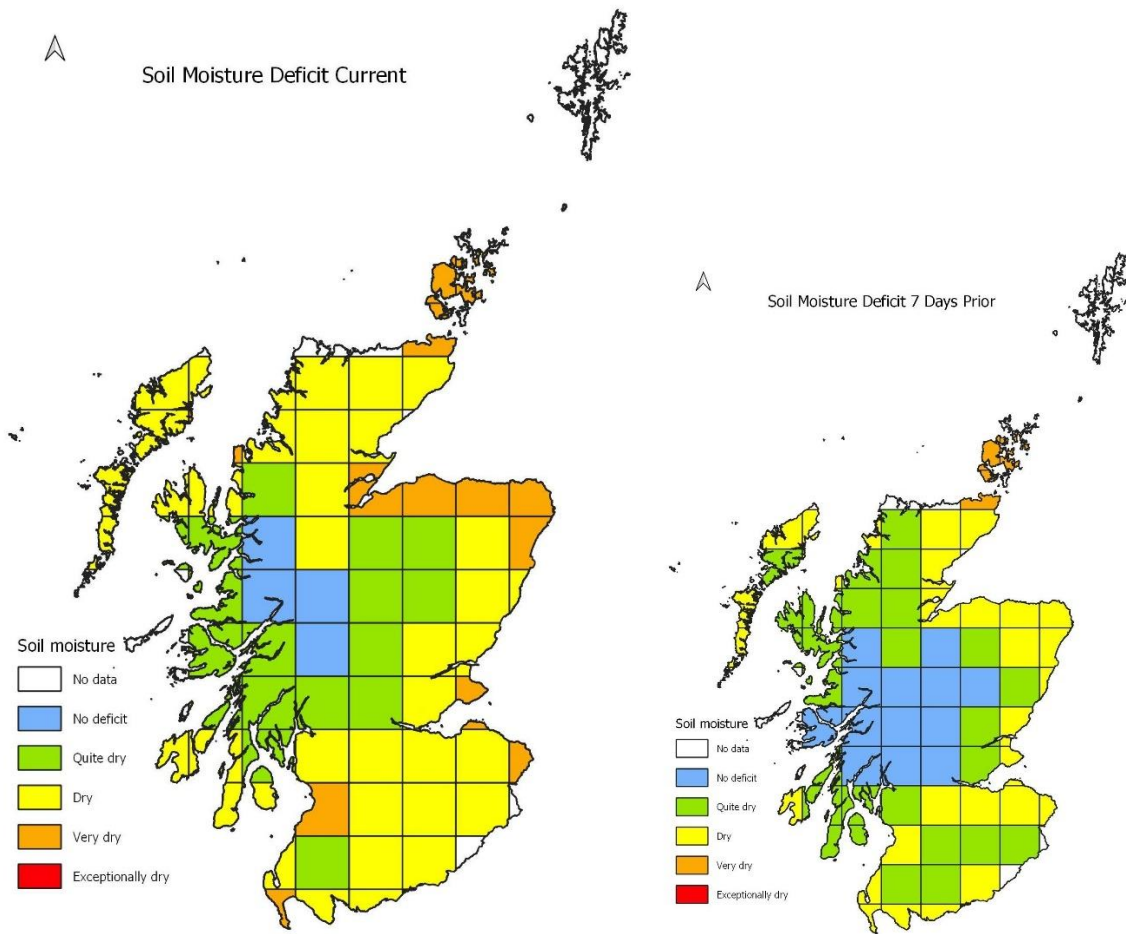
For the most up to date advice please see: [Advice for abstractors](#).

Water abstractors with concerns about meeting licence conditions or wishing to discuss contingency measures should get in touch at the following e-mail address [water scarcity mailbox](#).

Weather forecast (22/07/21)

Largely dry for the rest of the week, perhaps some light drizzle at times in the far north and east, and an outside chance of an isolated shower over high ground on Friday. Showery outbreaks of rain on Monday, these most likely across eastern Scotland, and perhaps turning heavy later in the day.

Further details are available in the following figures:



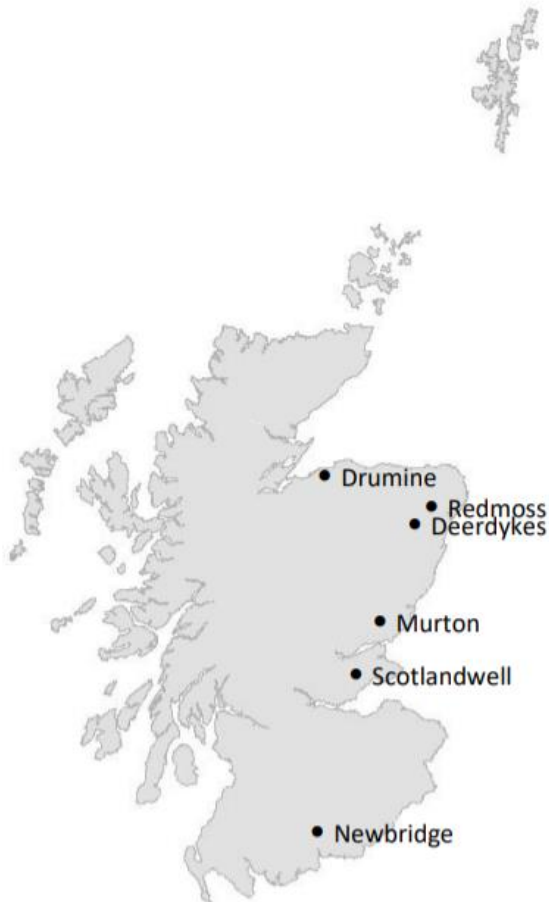
These maps depict the current latest Soil Moisture Deficit (21st July 2021) and 7 days prior for comparison. Based on the MORECS data obtained from the Met Office.



Natural water storage situation

In each river catchment there is some degree of water storage, which can maintain river flows even when it is not raining. This natural water storage is mainly held in lochs and groundwater. When natural storage has been depleted it will take a lot of rainfall for levels to recover.

21st July 2021

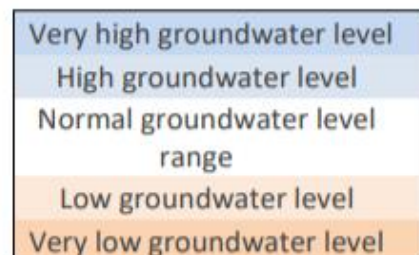


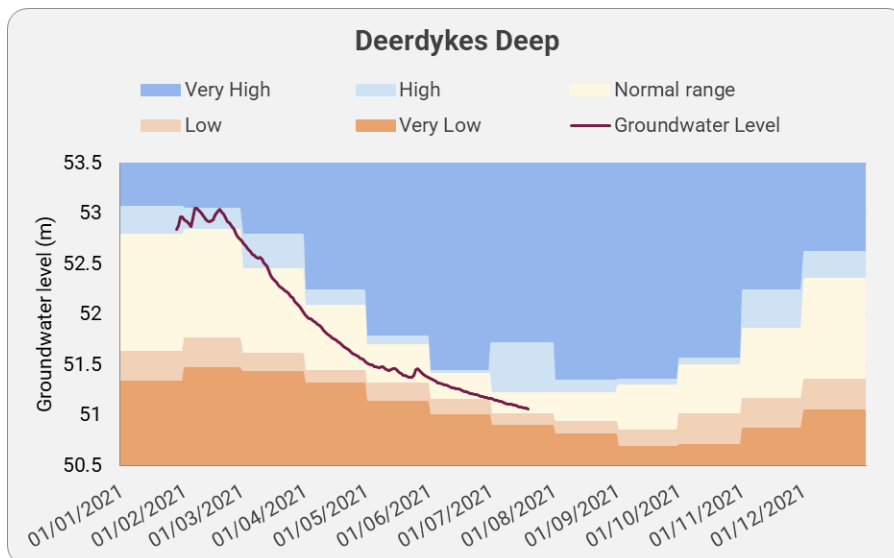
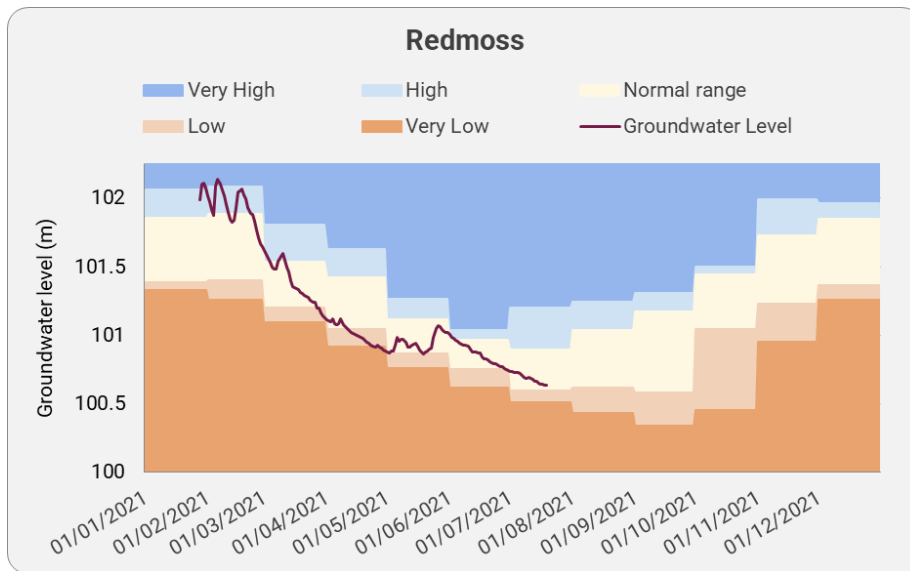
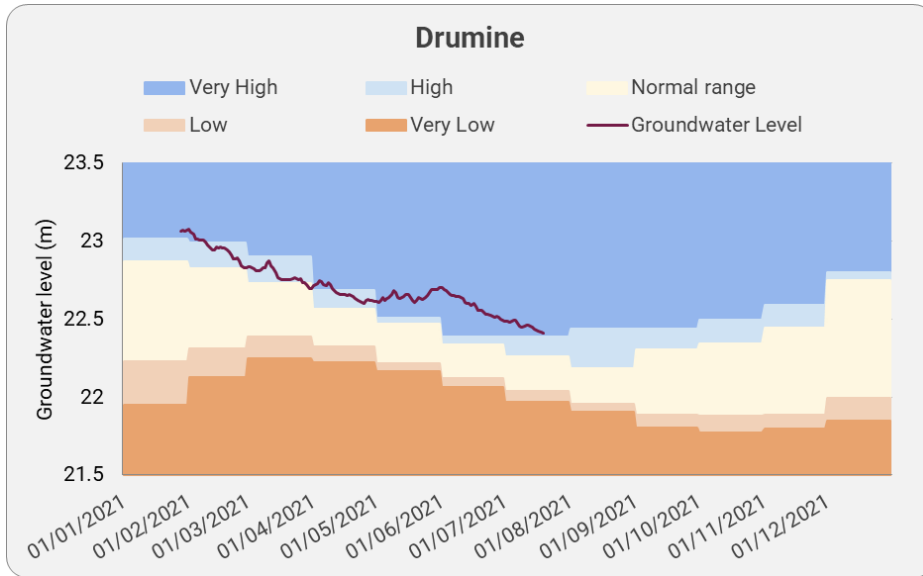
Groundwater levels are still all within the normal or high range for the time of year.

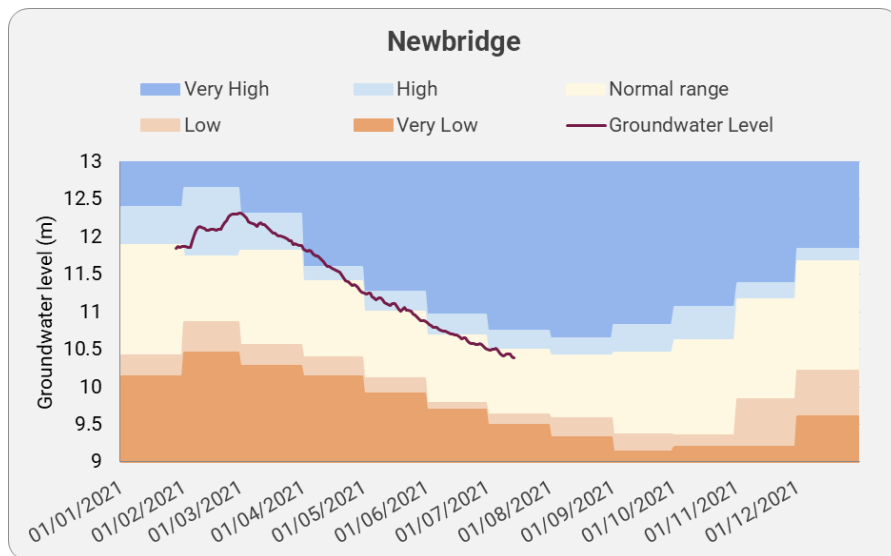
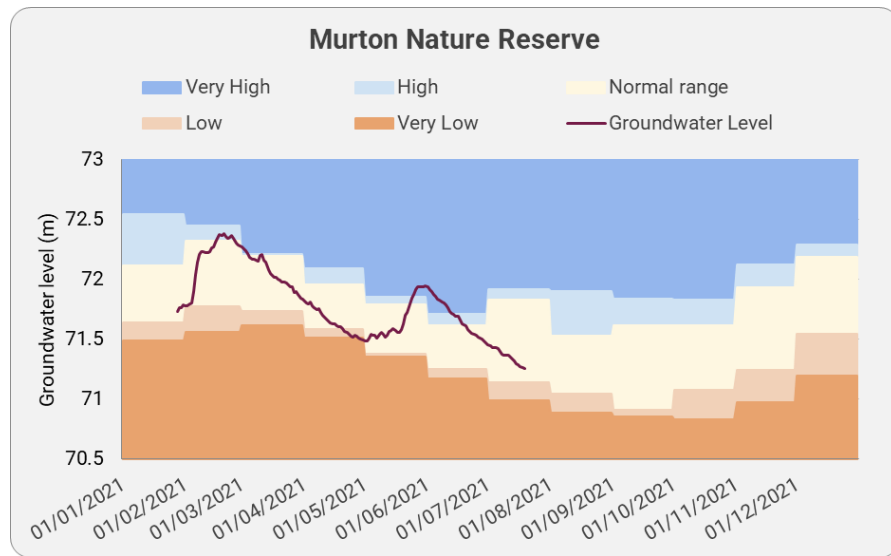
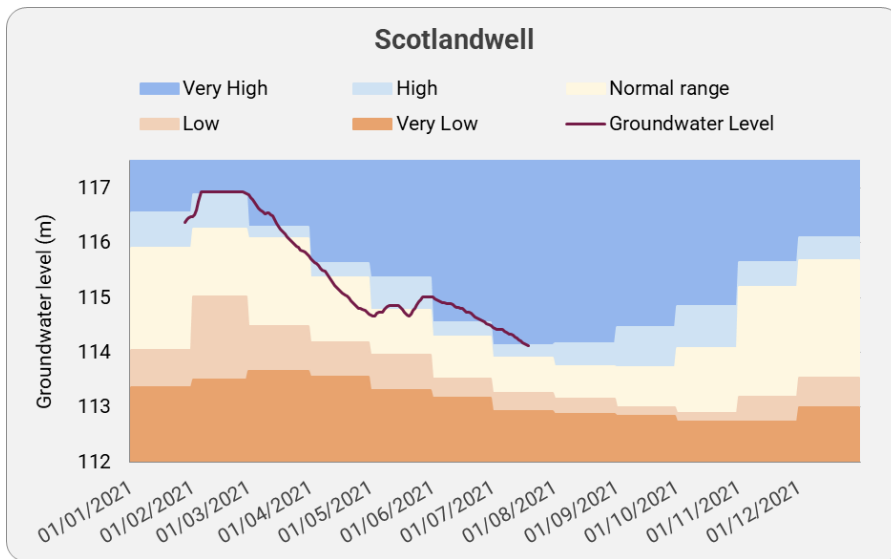
We have up to date data for 11 groundwater level monitoring sites, spread across the east and south-west of the country, giving a good picture of the current situation.

Loch level data is not currently available.

The following charts show the trend in groundwater level (GWL) since start of the year at selected monitoring sites (see map above). The black line shows the recorded groundwater level. This is plotted over level trend bands, which are based on the long-term record of mean monthly level values.







For information on accessing this document in an alternative format or language please either contact SEPA by telephone on 03000 99 66 99 or by email to

equalities@sepa.org.uk

If you are a user of British Sign Language (BSL) the Contact Scotland BSL service gives you access to an online interpreter enabling you to communicate with us using sign language.

<http://contactscotland-bsl.org/>

www.sepa.org.uk

Strathallan House, Castle Business Park, Stirling, FK9 4TZ