

# Water Scarcity Report

14<sup>th</sup> October 2021



## HEADLINES

There has been further recovery across Scotland this week due to recent rainfall, with all areas being at either Normal Conditions or Early Warning.

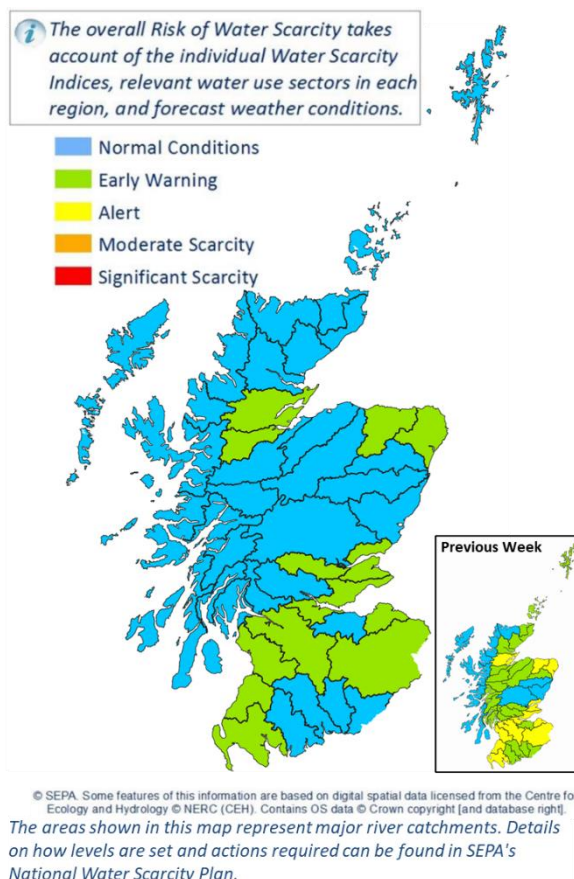
Above average rainfall is required to improve loch levels and groundwater storage, in those areas still in Early Warning.

## Situation Summary

Due to recent rainfall, there has been further improvement in river levels across most of Scotland.

Above average rainfall is required to offset the storage deficit in lochs and groundwater in those areas still in Early Warning.

SEPA is monitoring the situation closely and coordinating steps to manage water resources in line with Scotland's National Water Scarcity Plan which is available on SEPA's website:



<https://www.sepa.org.uk/environment/water/water-scarcity/>.

You can help us by reporting any evidence you see of water scarcity. For details of information that would be useful to us and where to send it see: [Water scarcity in your area | Scottish Environment Protection Agency \(SEPA\)](#).

## Advice for water users

Scottish Water are asking customers to use water wisely in and around their homes. More information can be found on the Scottish Water website

<https://www.scottishwater.co.uk/Your-Home/Save-Water>

Water abstractors with concerns about meeting licence conditions or wishing to discuss contingency measures should get in touch at the following e-mail address

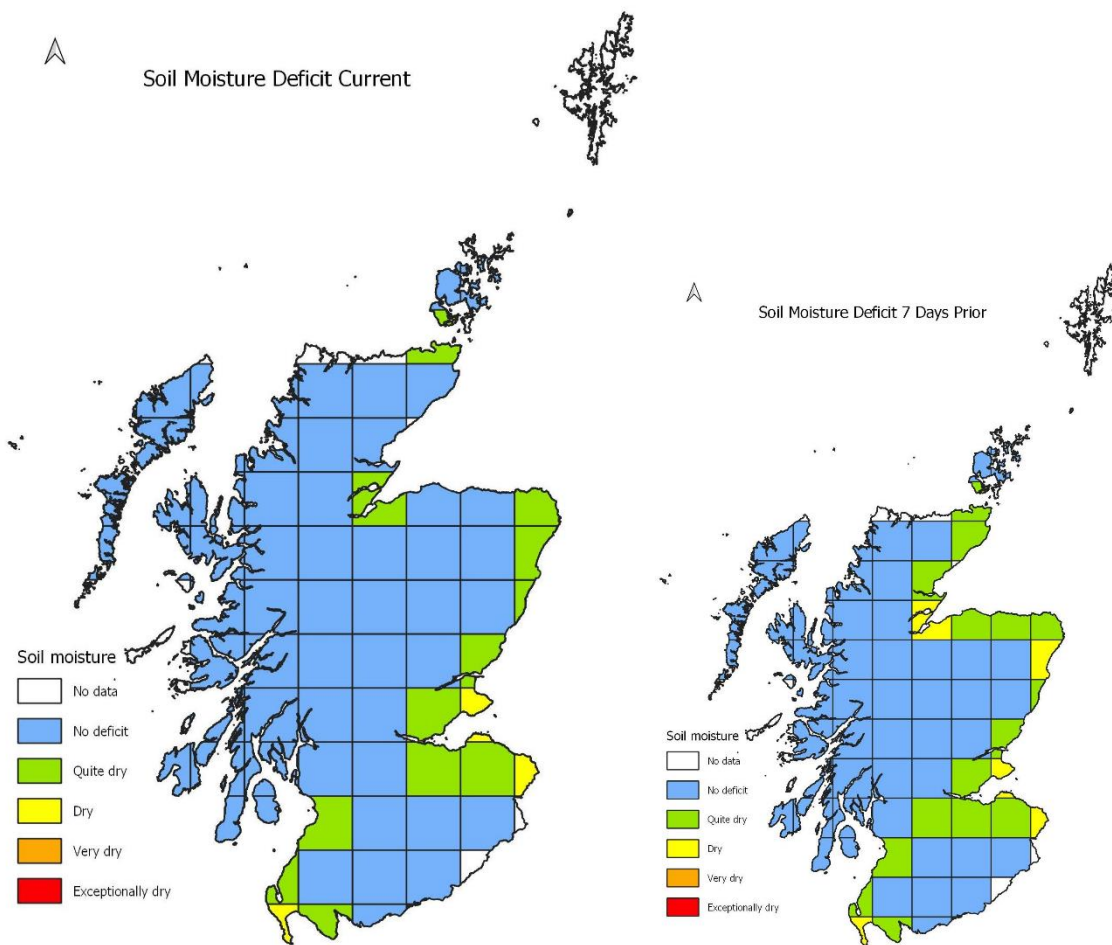
[WaterScarcity@sepa.org.uk](mailto:WaterScarcity@sepa.org.uk)

## Weather forecast (14/10/21)

Bands of rain spread south on Thursday with cooler, fresher conditions following for Friday. A lot of sunshine and mostly dry except for a few showers for the far North on Friday. A dry bright start on Saturday but an area of rain spreading east and becoming windy too. Wet and windy for the Northwest Highlands on Sunday but dry elsewhere. An unsettled start to the new week with further cloudy, wet and windy weather expected.

At a seasonal timescale, models suggest that October to December is more likely to be wet than dry, and there is more than double the chance of higher than average temperatures.

Further details are available in the following figures:

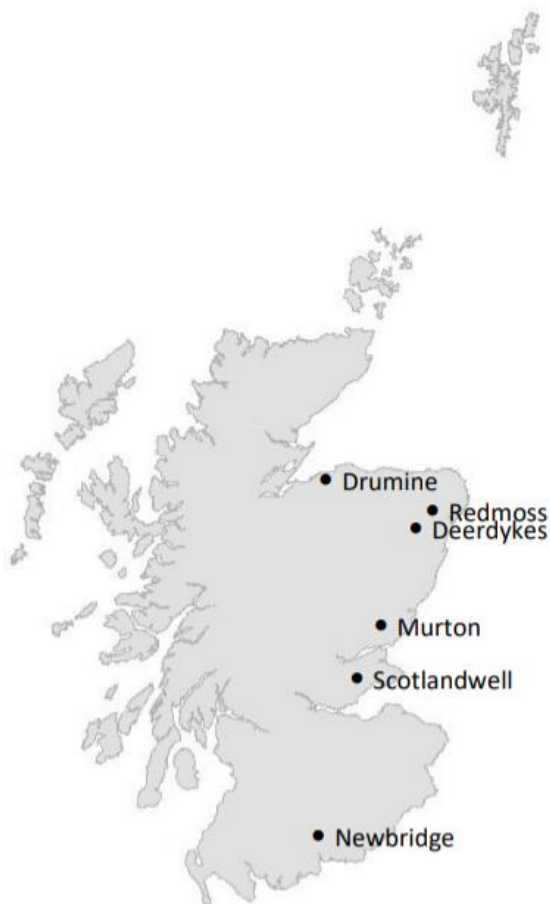


These maps depict the current latest Soil Moisture Deficit (12<sup>th</sup> October 2021) and seven days prior for comparison. Based on the MORECS data obtained from the Met Office.



## Natural water storage situation

In each river catchment there is some degree of water storage, which can maintain river flows even when it is not raining. This natural water storage is mainly held in lochs and groundwater. When natural storage has been depleted it will take a lot of rainfall for levels to recover.



12<sup>th</sup> October 2021

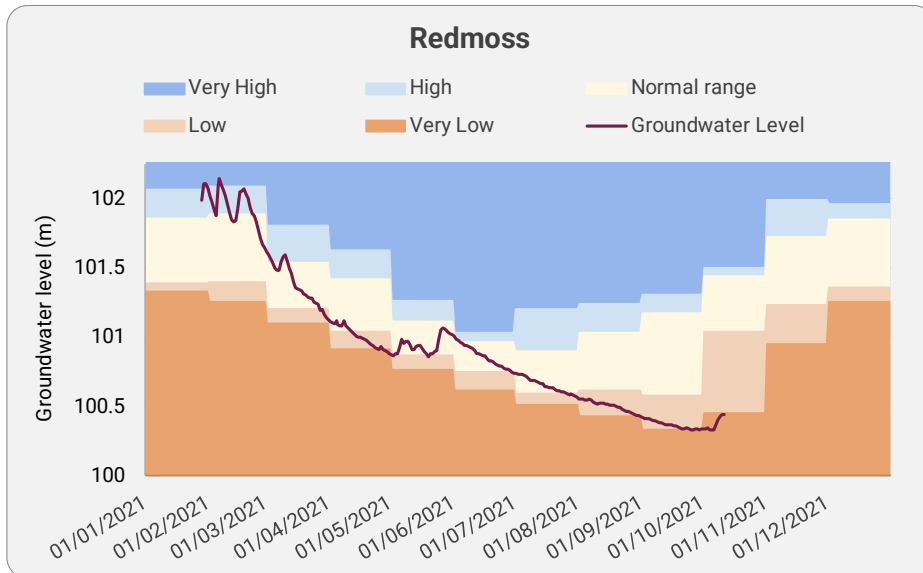
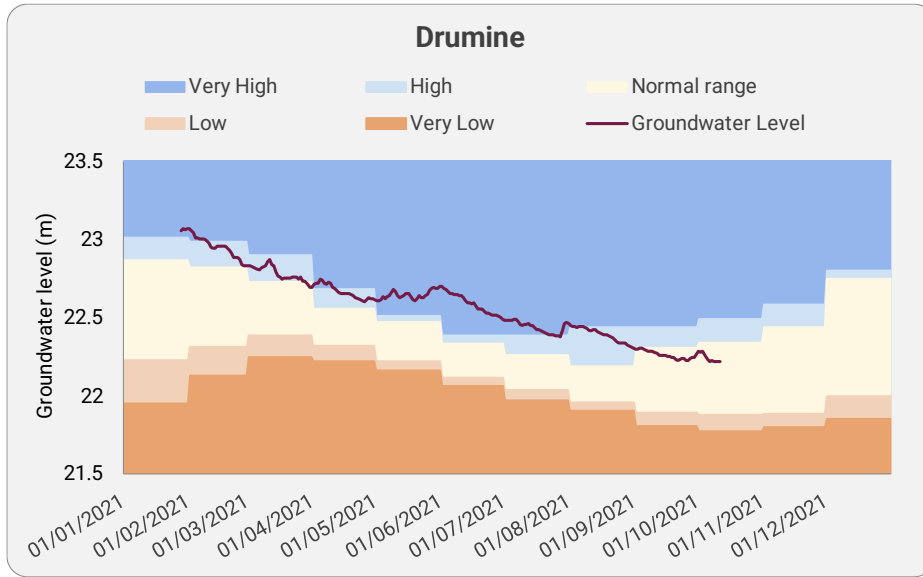
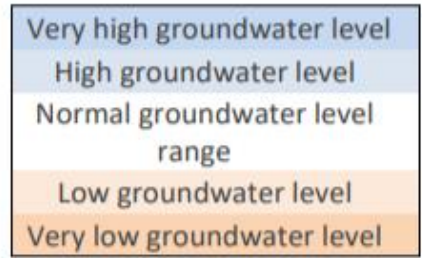
Groundwater levels across the country, have seen a slight recovery in the last week, due to recent rainfall. However they remain low in Aberdeenshire and Angus for the time of year.

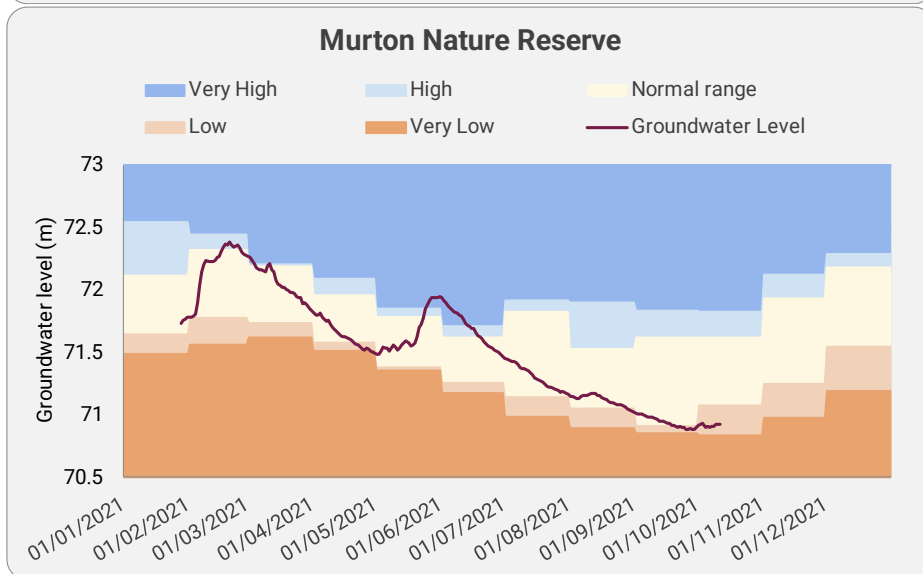
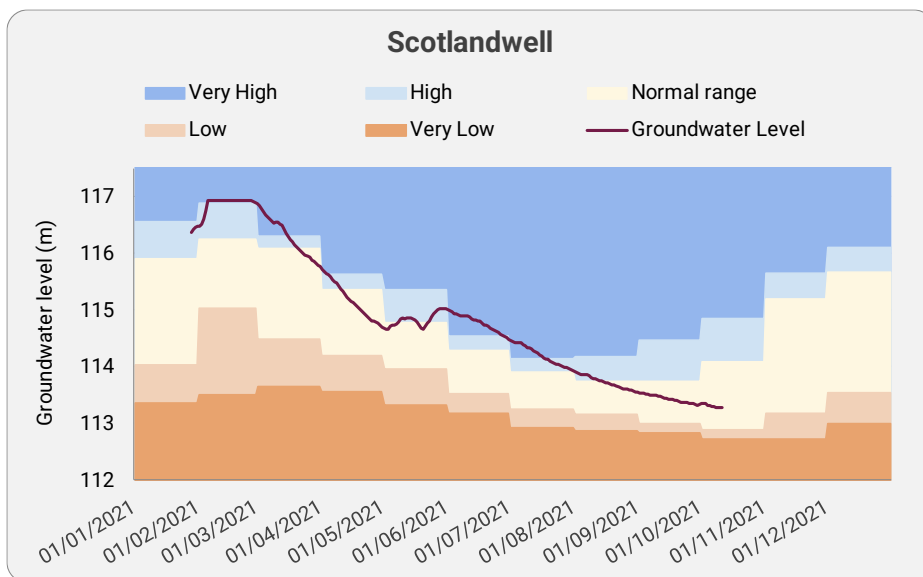
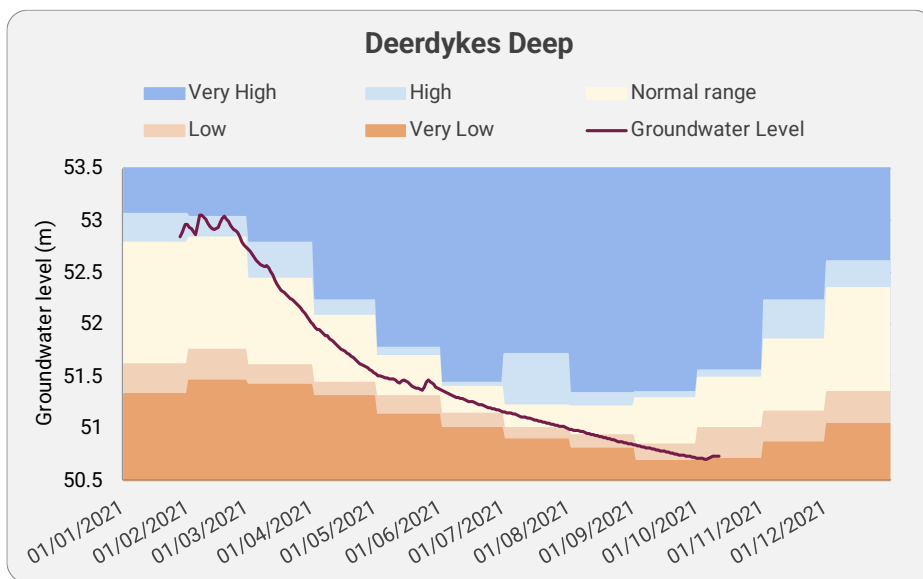
Groundwater levels in other areas remain within the normal range.

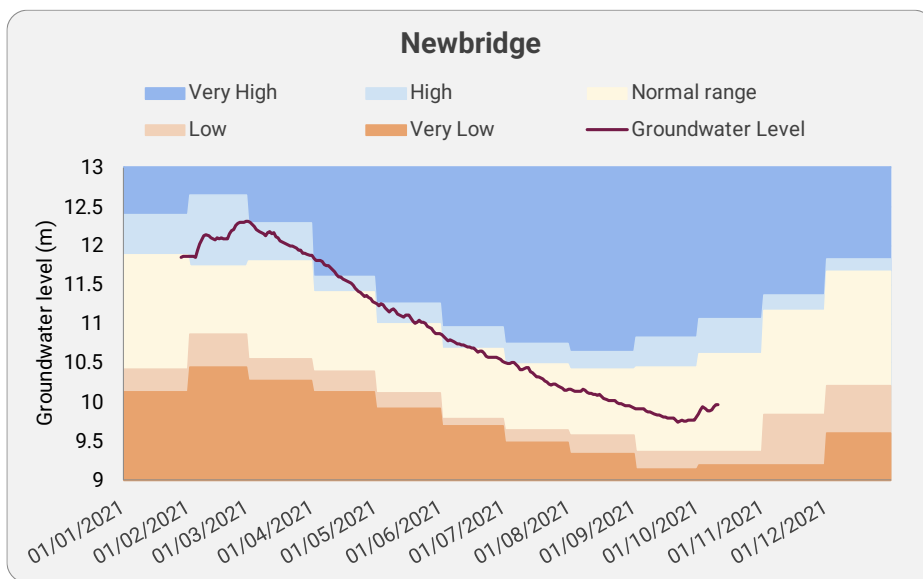
We have up to date data for 11 groundwater level monitoring sites, spread across the east and south-west of the country, giving a good picture of the current situation.

Loch level data is not currently available.

The following charts show the trend in groundwater level (GWL) since start of the year at selected monitoring sites (see map above). The black line shows the recorded groundwater level. This is plotted over level trend bands, which are based on the long-term record of mean monthly level values.







For information on accessing this document in an alternative format or language please either contact SEPA by telephone on 03000 99 66 99 or by email to [equalities@sepa.org.uk](mailto:equalities@sepa.org.uk)

If you are a user of British Sign Language (BSL) the Contact Scotland BSL service gives you access to an online interpreter enabling you to communicate with us using sign language.

<http://contactscotland-bsl.org/>

[www.sepa.org.uk](http://www.sepa.org.uk)

Strathallan House, Castle Business Park, Stirling, FK9 4TZ