

# Water Scarcity Report

21<sup>st</sup> October 2021



## HEADLINES

**Recovery has continued this week, with more areas recovering to Normal Conditions.**

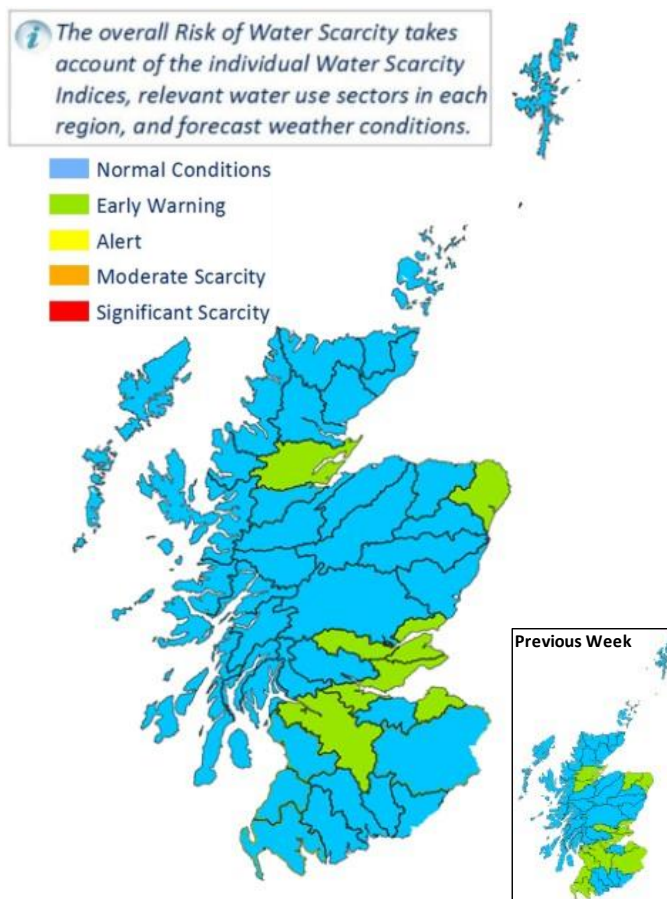
**Some areas remain at Early Warning. In these areas, longer-term deficits persist.**

### Situation Summary

Recent recovery has continued this week, with more areas recovering to Normal Conditions: the Beaulieu area, the Deveron catchment in the north-east, the Tweed catchment and the south-west.

Some areas remain at Early Warning: the Conon area, the Ythan catchment in the north-east, and some areas of the central belt.

In areas still at Early Warning, long-term river flow indices and the storage situation show that longer-term deficits persist. A period of above-average rainfall is required to offset these deficits. If the coming winter does not deliver this rainfall, the risk of water scarcity next summer will be higher, and a scarcity situation could develop more quickly.



© SEPA. Some features of this information are based on digital spatial data licensed from the Centre for Ecology and Hydrology © NERC (CEH). Contains OS data © Crown copyright [and database right].

*The areas shown in this map represent major river catchments. Details on how levels are set and actions required can be found in SEPA's National Water Scarcity Plan.*

SEPA is monitoring the situation closely and coordinating steps to manage water resources in line with Scotland's National Water Scarcity Plan which is available on SEPA's website:

<https://www.sepa.org.uk/environment/water/water-scarcity/>.

You can help us by reporting any evidence you see of water scarcity. For details of information that would be useful to us and where to send it see: [Water scarcity in your area | Scottish Environment Protection Agency \(SEPA\)](#).

### **Advice for water users**

Scottish Water are asking customers to use water wisely in and around their homes. More information can be found on the Scottish Water website

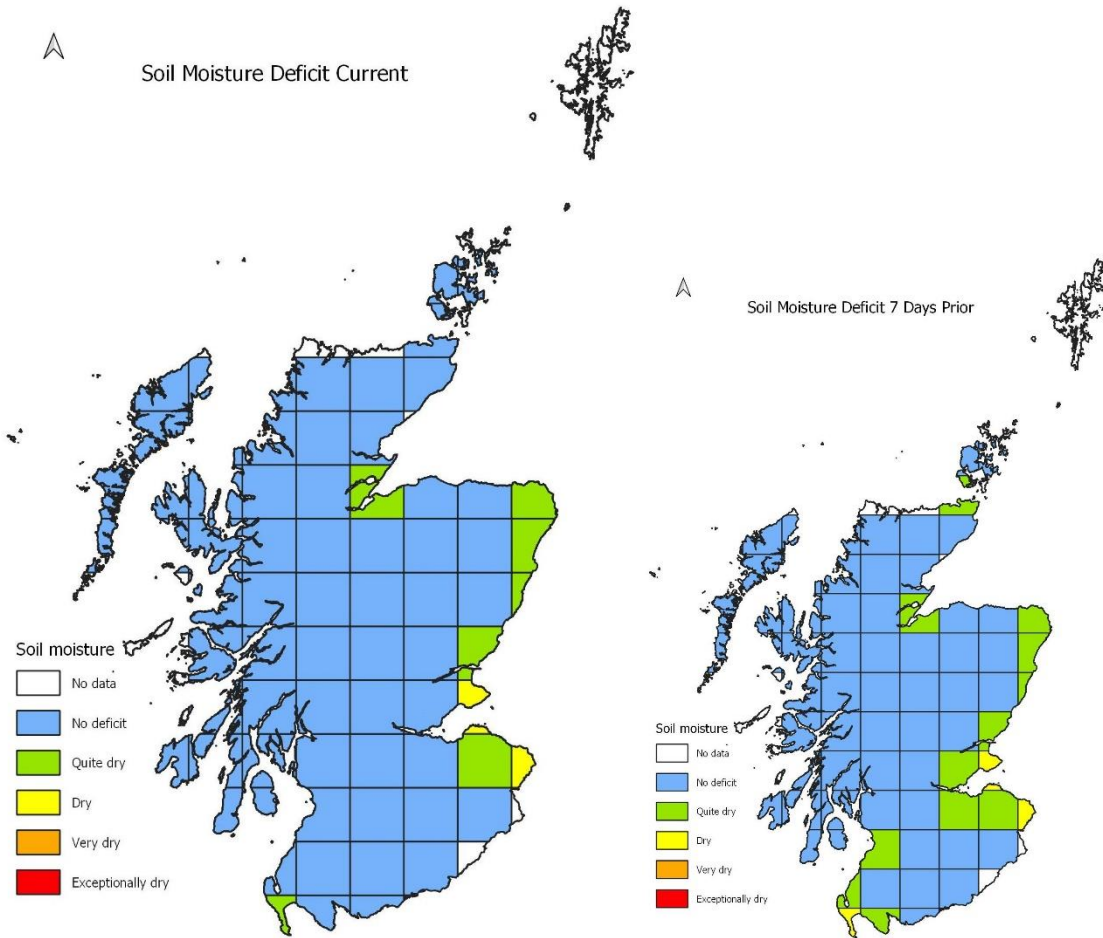
<https://www.scottishwater.co.uk/Your-Home/Save-Water>

### **Weather forecast (20/10/21)**

A cold and showery north to north-west flow dominates on Thursday, but weakens on Friday as pressure builds from the west. Return of milder conditions from Saturday as rain bands cross the country from the west, then a mixture of sunshine and showers for Sunday. Becoming more settled and colder early next week, with showers, wintry on higher ground.

At a seasonal timescale, models suggest that October to December is more likely to be wet than dry, and there is more than double the chance of higher-than-average temperatures.

**Further details are available in the following figures:**



**These maps depict the current latest Soil Moisture Deficit (19<sup>th</sup> October 2021) and seven days prior for comparison. Based on the MORECS data obtained from the Met Office.**



### Natural water storage situation

In each river catchment there is some degree of water storage, which can maintain river flows even when it is not raining. This natural water storage is mainly held in lochs and groundwater. When natural storage has been depleted it will take a lot of rainfall for levels to recover.

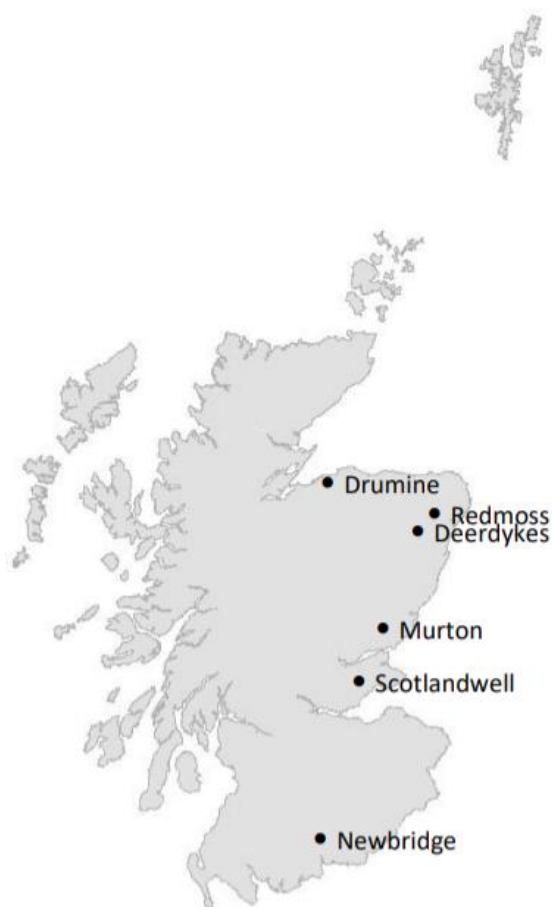
19<sup>th</sup> October 2021

Groundwater levels in Aberdeenshire and Angus remain low for the time of year.

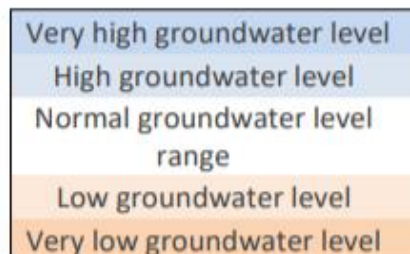
Groundwater levels in other areas remain within the normal range.

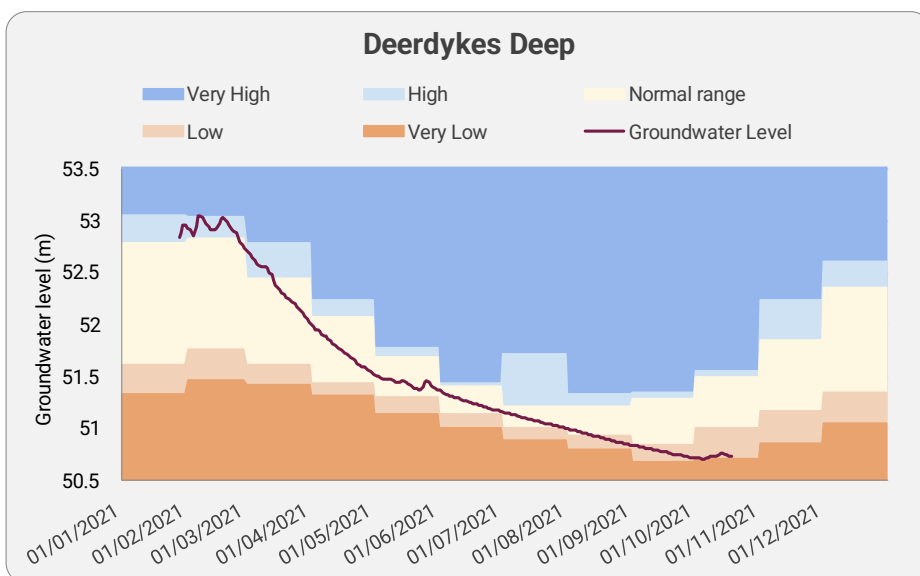
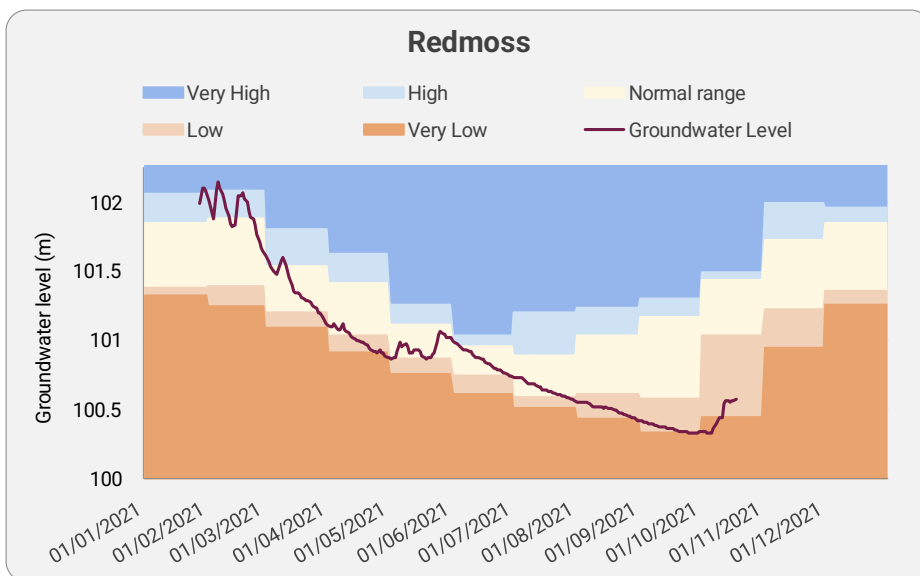
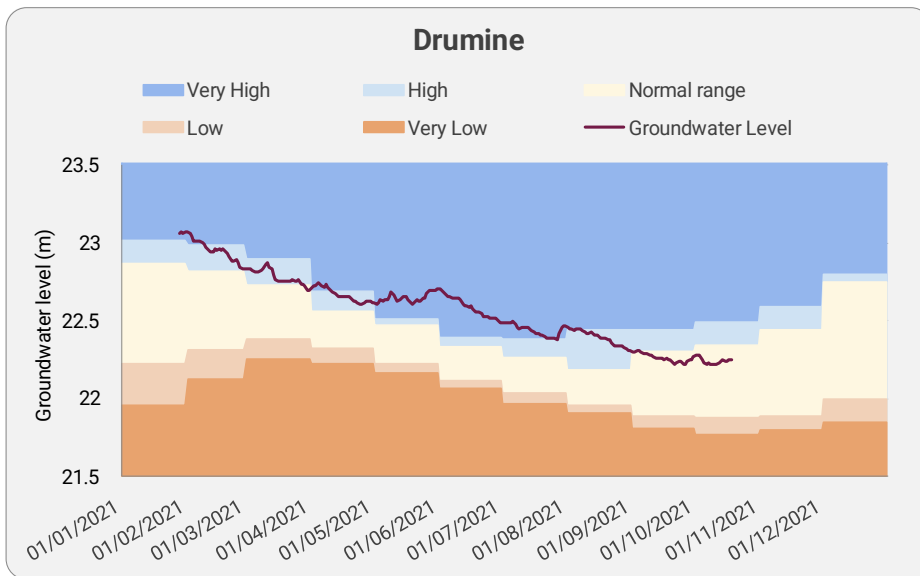
We have up to date data for 11 groundwater level monitoring sites, spread across the east and south-west of the country, giving a good picture of the current situation.

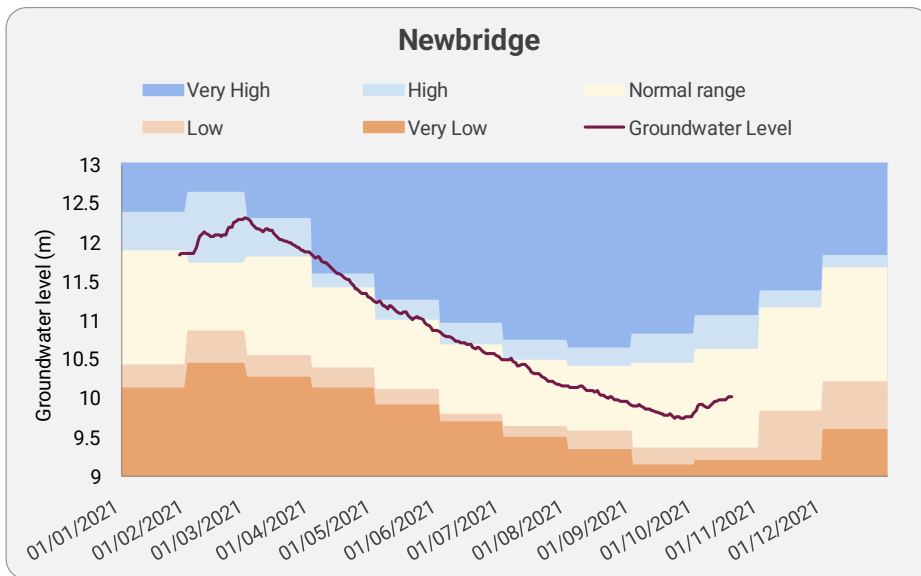
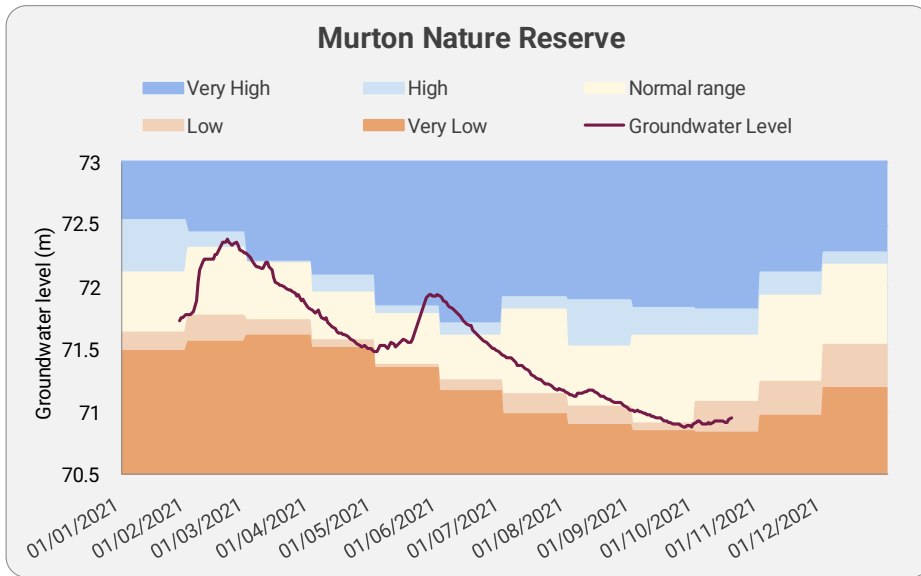
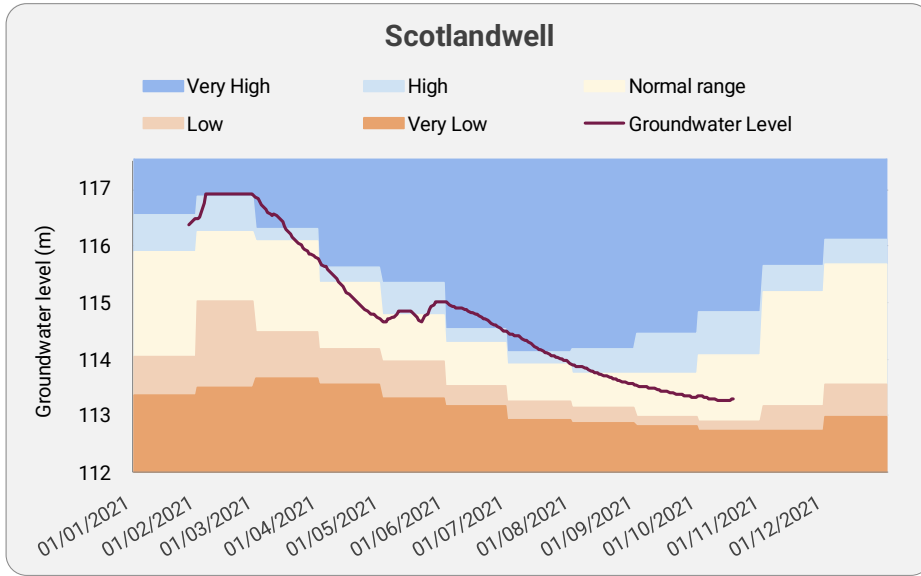
Loch level data is not currently available.



The following charts show the trend in groundwater level (GWL) since start of the year at selected monitoring sites (see map above). The black line shows the recorded groundwater level. This is plotted over level trend bands, which are based on the long-term record of mean monthly level values.







For information on accessing this document in an alternative format or language please either contact SEPA by telephone on 03000 99 66 99 or by email to

[equalities@sepa.org.uk](mailto:equalities@sepa.org.uk)

If you are a user of British Sign Language (BSL) the Contact Scotland BSL service gives you access to an online interpreter enabling you to communicate with us using sign language.

<http://contactscotland-bsl.org/>

[www.sepa.org.uk](http://www.sepa.org.uk)

Strathallan House, Castle Business Park, Stirling, FK9 4TZ