

Bathing Water Profile for Barassie

Troon, Scotland

Current water classification <https://www2.sepa.org.uk/BathingWaters/Classifications.aspx>

Today's water quality forecast <http://apps.sepa.org.uk/bathingwaters/Predictions.aspx>

Description Barassie is a long, wide and mostly flat, sandy beach with views of the Isle of Arran and the Firth of Clyde. It lies to the north of Troon Harbour and is popular for a wide range of water sports including kite surfing, windsurfing and sailing. At low tide there is a vast area for visitors explore, but when the tide comes in, water covers most of the beach.

The beach is separated from the main road and the town of Barassie by a wide grassy area. It is a popular place for family picnics.



Site details	Local authority South	Ayrshire Council
	Year of designation	2023
	Water sampling location	NS 32398 32414

Catchment description

The catchment area draining into Barassie bathing water covers around 7 square kilometres. It comprises of rolling countryside with a low-lying sandy strip to the west and hills with elevations of up to 145 metres to the east. A predominantly suburban area lies in the flatter western half and is of much lower elevations (average of 0–30 metres).

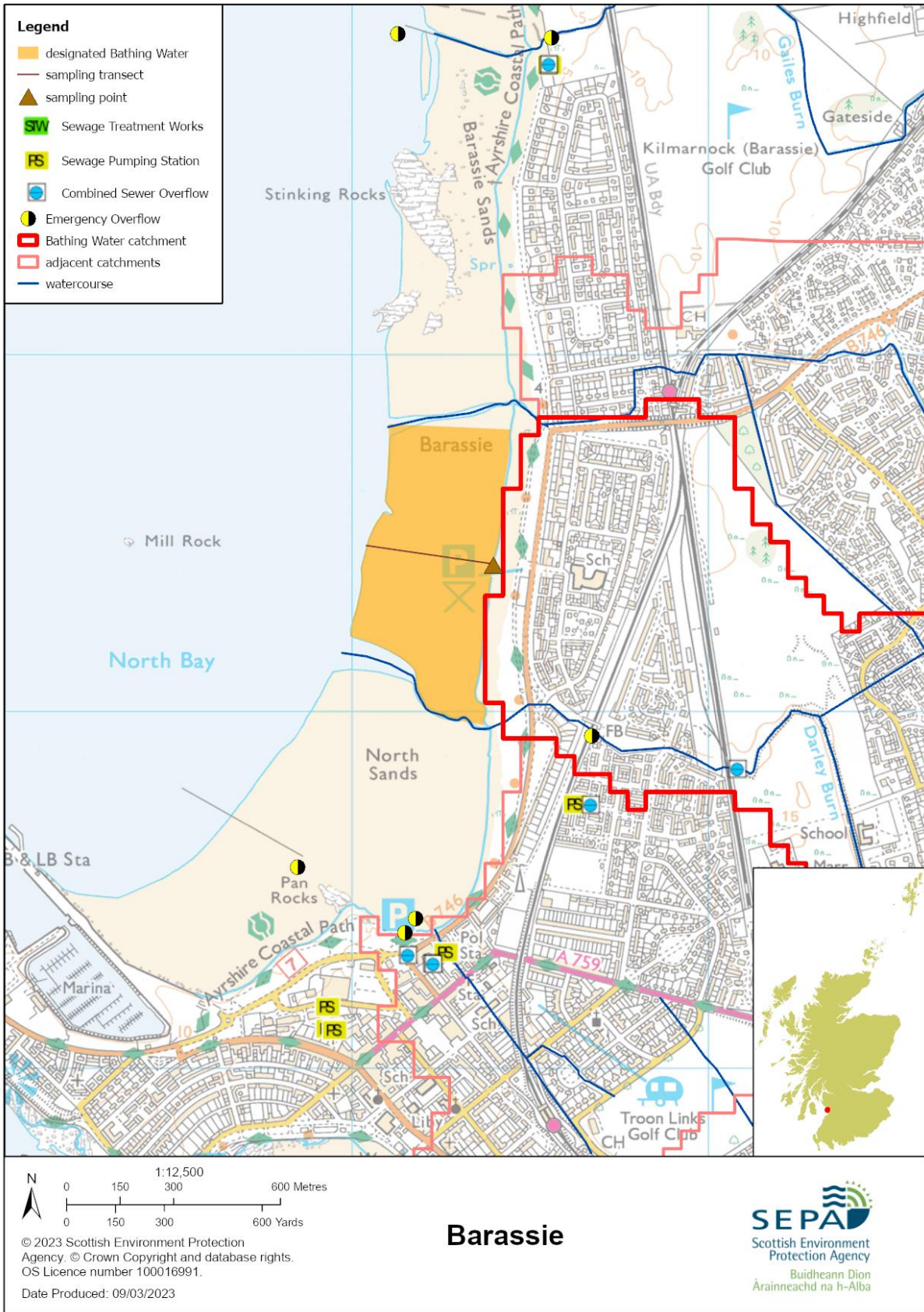
The catchment is predominantly rural, with agriculture the major land use. A small but significant portion of the bathing water catchment is suburban (residential) including the villages of Barassie, Muirhead and Loans.

Risks to water quality

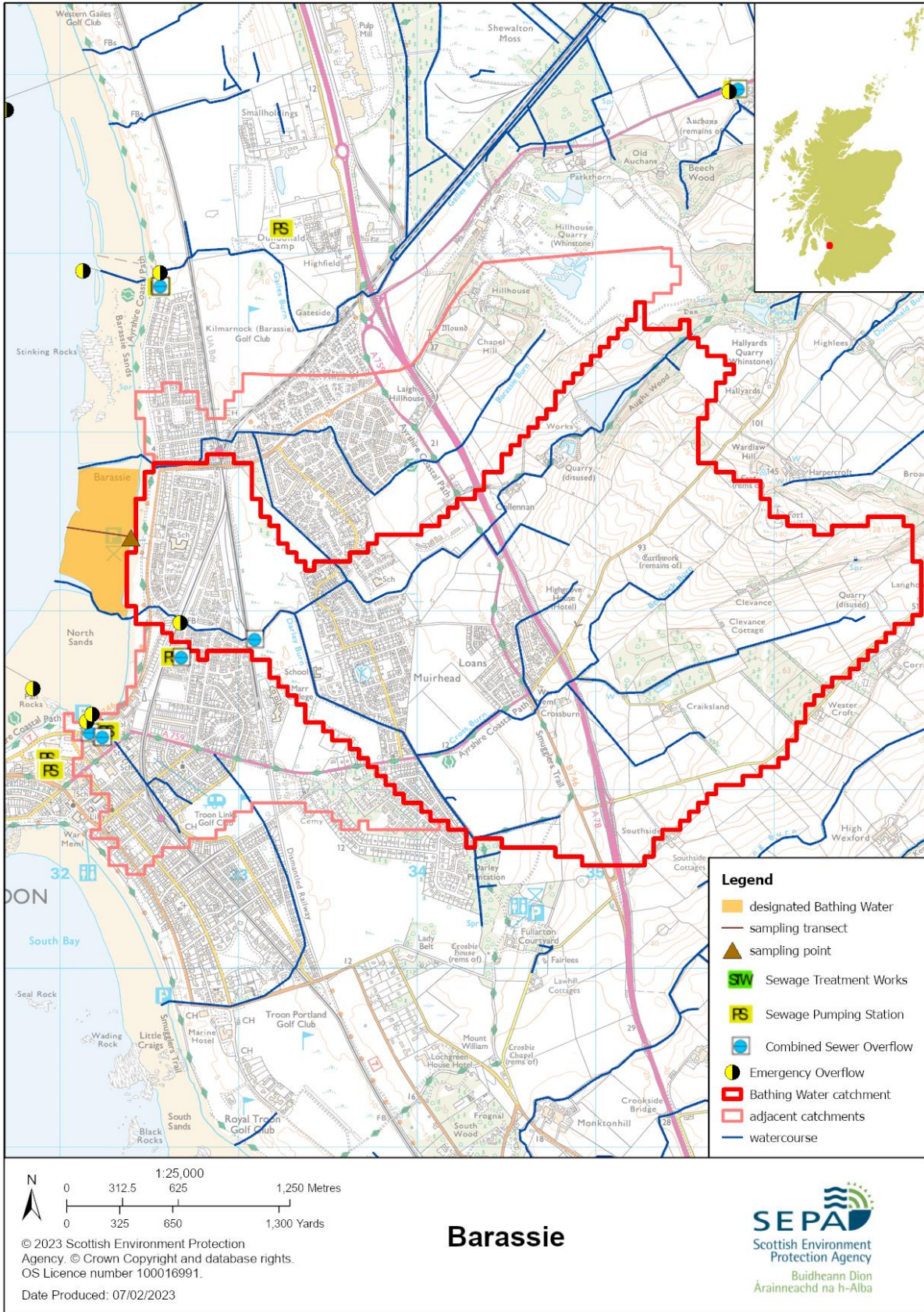
Risks and sources of wet weather driven short term pollution at this bathing water include sewer overflows, surface water discharges and agricultural run-off,

There is a risk that water pollution may occur after heavy rainfall. **Bathing is not advised during or 1-2 days after heavy rainfall. This is due to the risk to bathers' health from water pollution.**

Map 1: Barassie bathing water



Map 2: Catchment draining into Barassie bathing water



Improving bathing water quality

Improving diffuse pollution from agricultural sources

Diffuse pollution from agricultural sources is the result of rain driven events causing cumulative inputs of pollutants to rivers and streams. Our current evidence does not indicate that the small rural burns in the catchment are a significant source of rural diffuse pollution.

Most of the farms within the Barassie bathing water catchment support livestock. SEPA intends visit farms in the catchment over the next 12 months to identify possible diffuse pollution source and agree with the land manager mitigation measures to reduce likely impact of diffuse pollution on the bathing water.

Improving pollution from sewage and other discharges

Scottish Water provides most wastewater collection and treatment services in Scotland.

There are no continuous discharges of sewage to Barassie bathing water under normal circumstances. Sewage from the area is pumped to Meadowhead STW, where it is treated and discharged to Irvine Bay via long sea outfall.

Under wet weather conditions, there is a risk to bathing water quality from combined sewer overflows (CSOs). Under rare, abnormal circumstances there is a risk from emergency discharges of sewage from the sewerage system.

Urban run-off and surface waters discharge into the Darley and Barassie Burns. These have the potential to impact on the bathing water due to sewage contamination from cross-connections.

Cyanobacteria (blue-green algae)

Marine waters are not at risk of cyanobacteria overproduction.

Algae

Current information suggests that this bathing water is not at risk of excessive growth of macroalgae (seaweed) or phytoplankton.

Jellyfish

There is a possibility of increased numbers of jellyfish in the water during summer months. This is a naturally occurring phenomenon. Most species common to the UK are harmless. The Marine Conservation Society advises to 'look but don't touch'.

Responding to pollution incidents

Please use our 24 hour hotline (0800 80 70 60) to report pollution. SEPA will investigate the incident and contact other relevant organisations. That may include Scottish Ministers, Scottish Water, the local authority and the relevant health board. Where necessary, measures will be put in place to resolve the problem.

If beach users or bathers are considered to be at risk, the local authority will warn the public by erecting signs at the bathing water. Information will also be available on our website.

SEPA will investigate whenever our sampling identifies pollution.

Beach users are encouraged to use the bins provided or to take litter home. Beach cleaning and litter clean-up is maintained by South Ayrshire Council for this bathing water.

Contact details and information sources

<p>SEPA Ayr office</p> <p>31 Miller Road Ayr Ayrshire KA7 2AX 01292 294000</p> <p>www.sepa.org.uk</p>	<p>South Ayrshire Council</p> <p>Burns House Burns Statue Square Ayr KA7 1UT 01292 618222</p> <p>environmental.health@south-ayrshire.gov.uk www.south-ayrshire.gov.uk</p>	<p>Keep Scotland Beautiful</p> <p>01786 471333</p> <p>beach@ksbscotland.org.uk www.keepsotlandbeautiful.org</p>
<p>Scottish Government</p> <p>Victoria Quay, Edinburgh, EH6 6QQ</p> <p>0131 244 0396</p> <p>eqcat@scotland.gsi.gov.uk www.scotland.gov.uk/Topics/Environment/Water/15561/bathingwaters</p>		

Version number:	Date:	Next review due:
1.0	February 2023	