

## Bathing Water Profile for Lower Largo

Lower Largo, Scotland

Current water classification <https://www2.sepa.org.uk/BathingWaters/Classifications.aspx>

Today's water quality forecast <http://apps.sepa.org.uk/bathingwaters/Predictions.aspx>

**Description** Lower Largo Beach is located in the pretty village of Lower Largo on the coast of Fife. The village and beach sit to the north of the Firth of Forth and this is an attractive spot with a long and interesting maritime history.

The beach is made up of a good-sized stretch of soft sand and you will find rocks and pools further down the shoreline. There are also splendid views from the beach over the Firth of Forth.



<b>Site details</b>	Local authority	Fife Council
	Year of designation	2023
	Water sampling location	NO 42154 02536

### Catchment description

The catchment area draining into the Lower Largo bathing water covers approx. 2.6 km<sup>2</sup>. It comprises of countryside descending steadily southwards to the coast from the prominent, steep hill of Largo Law (elevation 290 metres), which is a local landmark. The only suburban area lies in the flatter southern portion and is of much lower elevation (average of 0–50 metres).

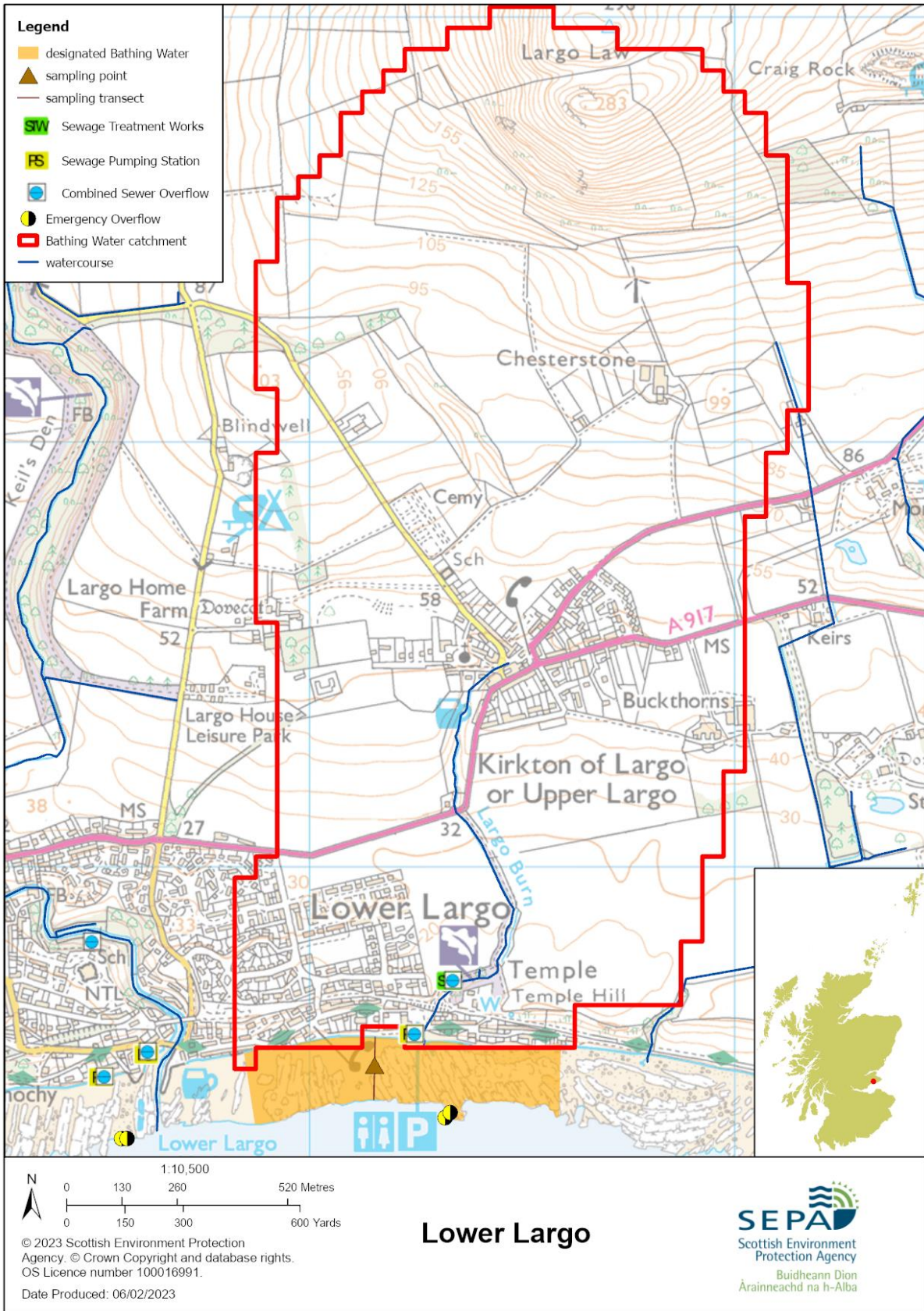
The catchment is predominantly rural with agriculture a significant land use. A small proportion of the bathing water catchment is residential, comprising the villages of Lower Largo and Upper Largo.

### Risks to water quality

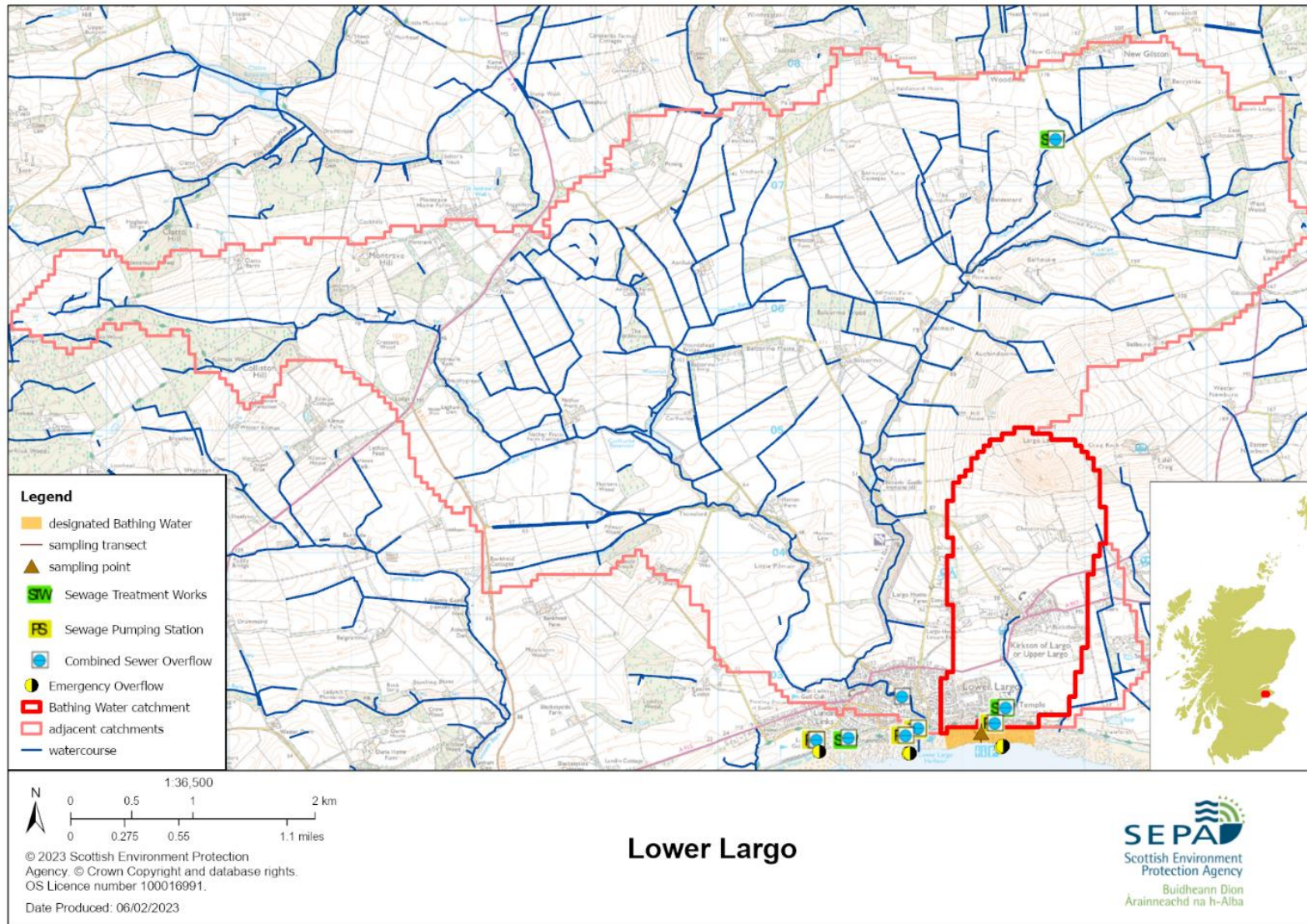
The principal pollution risks at this bathing water are from sewerage sources.

There is a risk that water pollution may occur after heavy rainfall. **Bathing is not advised during or 1-2 days after heavy rainfall. This is due to the risk to bathers' health from water pollution.**

Map 1: Lower Largo bathing water



Map 2: Catchment draining into Lower Largo bathing water



## **Improving bathing water quality**

### **Improving diffuse pollution from agricultural sources**

Diffuse pollution from agricultural sources is the result of rain driven events causing cumulative inputs of pollutants to rivers and streams. Our current evidence does not indicate that the Keil and Largo Burns are a significant source of rural diffuse pollution.

Most of the farms within the Lower Largo bathing water catchment support mixed livestock and a little arable farming. SEPA intends visiting all farms in the catchment over the next 12 months which spread organic fertilizers and or have livestock. These visits will be used to identify possible diffuse pollution source and agree with the land manager mitigation measures to reduce likely impact of diffuse pollution on the bathing water.

### **Improving pollution from sewage and other discharges**

Scottish Water provides most wastewater collection and treatment services in Scotland.

The Lower Largo network is almost entirely a combined sewerage system and as such, there are a number of Scottish Water assets within the catchment which have the potential to impact on bathing water quality.

Lower Largo WwTW is a primary treatment works, which discharges via an outfall to Largo Bay.

### **Cyanobacteria (blue-green algae)**

Marine waters are not at risk of cyanobacteria overproduction.

### **Algae**

Current information suggests that this bathing water is not at risk of excessive growth of macroalgae (seaweed) or phytoplankton.

### **Jellyfish**

There is a possibility of increased numbers of jellyfish in the water during summer months. This is a naturally occurring phenomenon. Most species common to the UK are harmless. The Marine Conservation Society advises to 'look but don't touch'.

### **Responding to pollution incidents**

Please use our 24 hour hotline (0800 80 70 60) to report pollution. SEPA will investigate the incident and contact other relevant organisations. That may include Scottish Ministers, Scottish Water, the local authority and the relevant health board. Where necessary, measures will be put in place to resolve the problem.

If beach users or bathers are considered to be at risk, the local authority will warn the public by erecting signs at the bathing water. Information will also be available on our website.

SEPA will investigate whenever our sampling identifies pollution.

Beach users are encouraged to use the bins provided or to take litter home. Beach cleaning and litter clean-up is maintained by Fife Council for this bathing water.

## Contact details and information sources

<p><b>SEPA Glenrothes office</b></p> <p>Pentland Court The Saltire Centre Glenrothes KY6 2DA 01592 776910 <a href="http://www.sepa.org.uk">www.sepa.org.uk</a></p>	<p><b>Fife Council</b></p> <p>Fife House North Street Glenrothes Fife KY7 5LT 08451 55 00 00 <a href="mailto:fife.council@fife.gov.uk">fife.council@fife.gov.uk</a> <a href="http://www.fife.gov.uk">www.fife.gov.uk</a></p>	<p><b>Keep Scotland Beautiful</b></p> <p>01786 471333 <a href="mailto:beach@ksbscotland.org.uk">beach@ksbscotland.org.uk</a> <a href="http://www.keepsotlandbeautiful.org">www.keepsotlandbeautiful.org</a></p>
<p><b>Scottish Government</b></p> <p>Victoria Quay, Edinburgh, EH6 6QQ 0131 244 0396 <a href="mailto:egcat@scotland.gsi.gov.uk">egcat@scotland.gsi.gov.uk</a> <a href="http://www.scotland.gov.uk/Topics/Environment/Water/15561/bathingwaters">www.scotland.gov.uk/Topics/Environment/Water/15561/bathingwaters</a></p>		

Version number:	Date:	Next review due:
1.0	February 2023	