



How to ensure that your Fishery Management Plan is delivering RBMP and FRM objectives



Morgane Gillet
RBMP coordinator

FRM: Policy drivers for change

Structural

Restoration of natural features of catchment, including wetlands, forests and floodplains.

Clearance and repair works to rivers

Walls, embankments and other defences

Barriers, barrages and other dams or storage structures

Drainage infrastructures,

Non Structural

Flood warning

Public awareness raising campaigns

Planning system and planning decisions

Emergency response

Relocation

Flood insurance

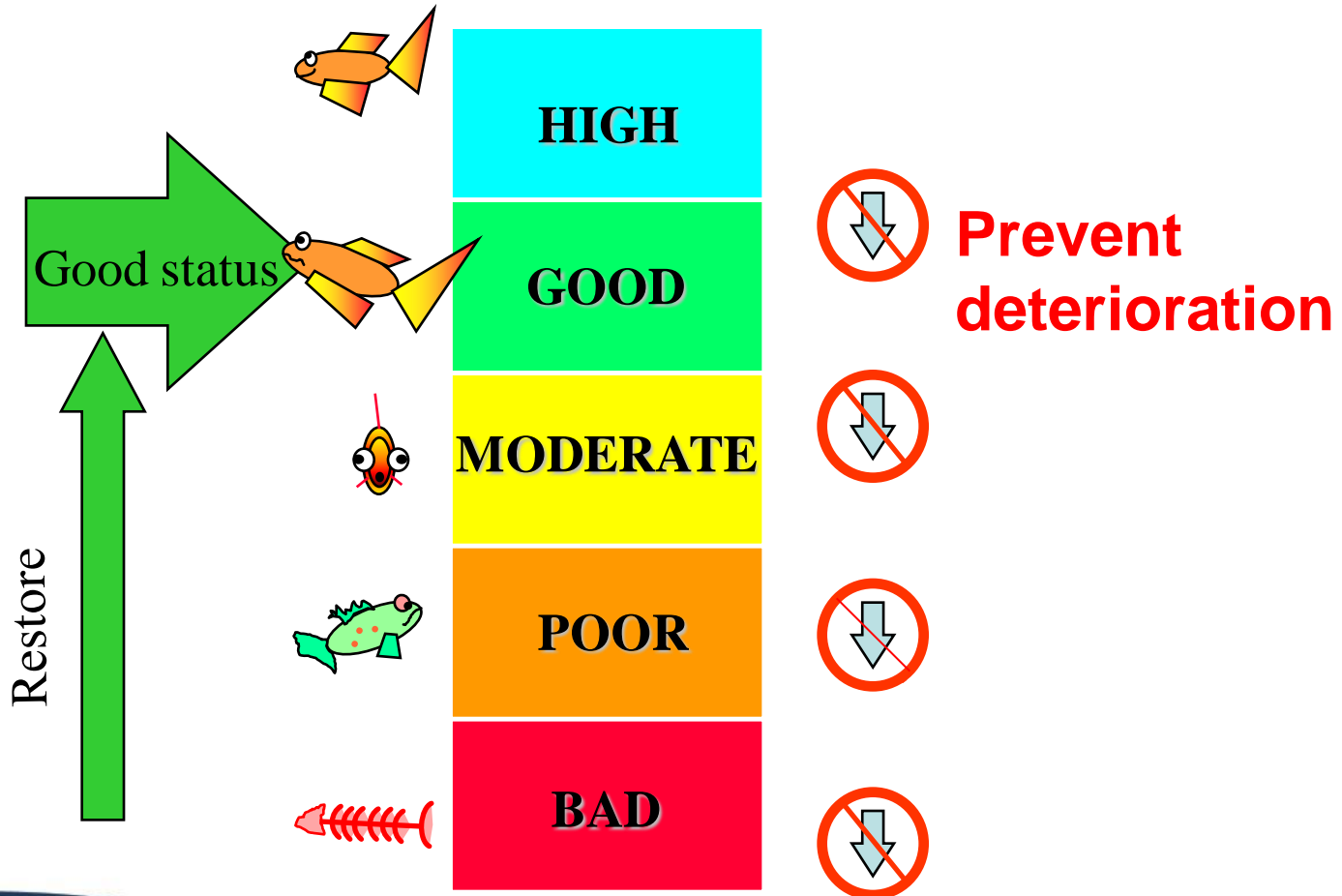
Compensation

Flood proofing buildings

Temporary defences

nd) Act 2009

The RBMP Objectives



Year	2008	2015	2021
Status	Poor	Poor	Good

HIGH

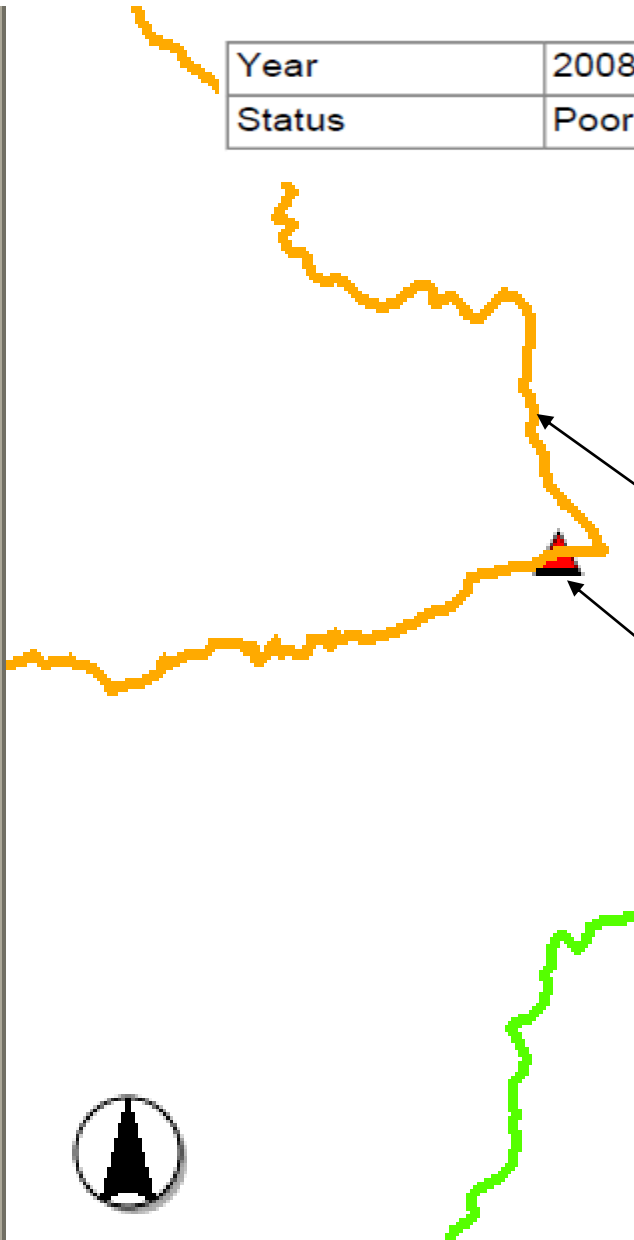
GOOD

MODERATE

POOR

BAD

Pressure	As a Result of Measure	Assessment Parameter Funding	Objective Owner
Point Source Pollution	Sewage disposal	Unknown Organics	Good by 2015
	Change timing or frequency of discharge	Agreed	Scottish Water
Morphological Alterations		Fish passage	Poor by 2015
	Removal of barriers or provision of mechanisms to enable fish migration	Projected	Operator



RBMP Programme of Measures

River Basin Management Planning Process

Non – regulatory

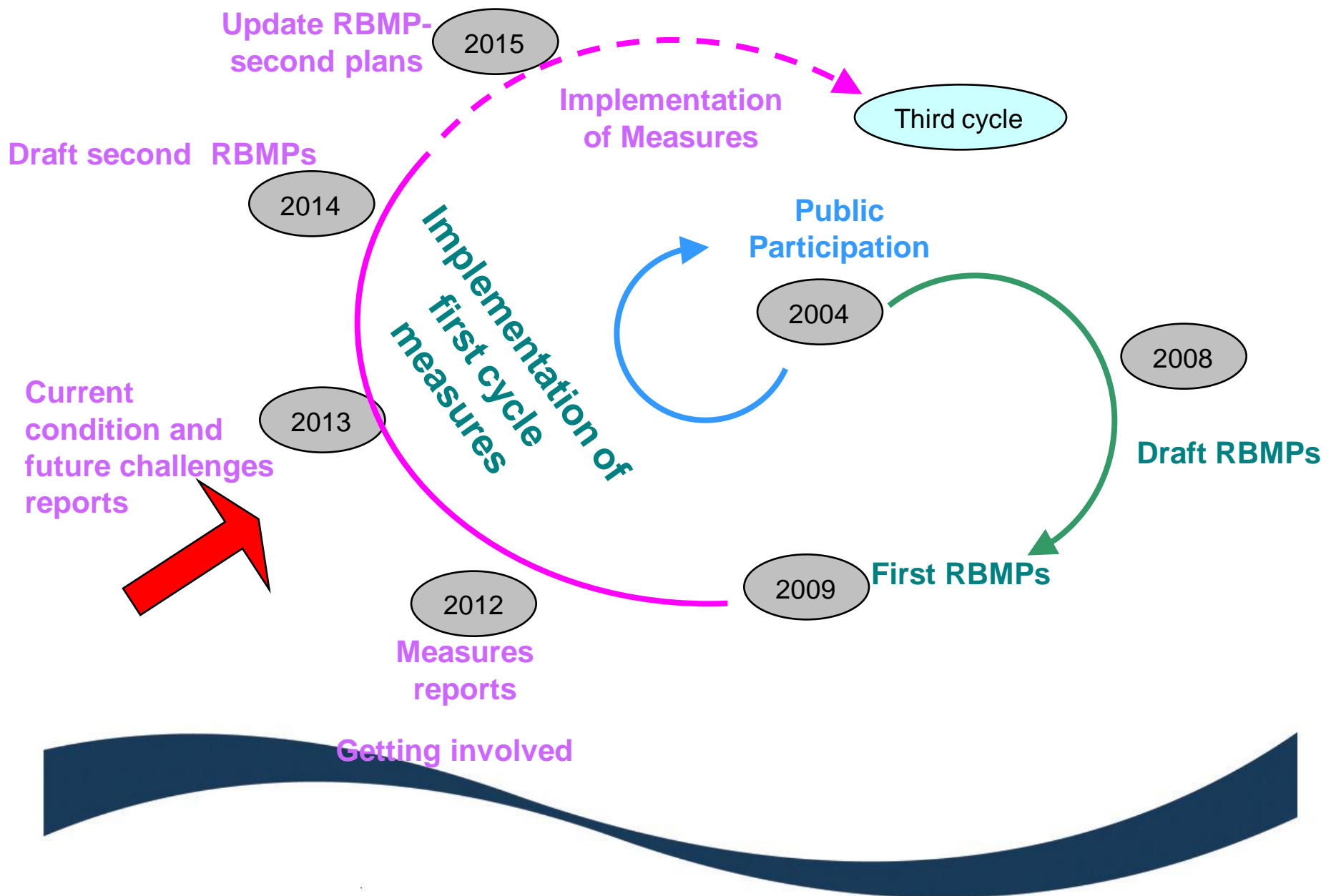
- Rural Development contracts
- Restoration Fund
- Other economic incentive
- Formal education and training
- Campaigning and awareness raising
- Accreditation scheme
- Measures Delivery Plan/Voluntary agreement
- International agreement (ie OSPAR)

Regulatory

- CAR 2005 –
 - Water Resources Reviews
 - Point Source Reviews
- NVZ Action Programmes
- PPC 2005
- EPA 1990
- FEPA
- Planning Regulations
- WML
- Forestry Commission Felling licence
- International Maritime legislation

Programme of Measures

The RBMP cycle



Current condition and challenges for the future

Current condition” (characterisation)

“Challenges for the future” –
Significant Water Management
Issues (SWMI)

Inventory of emissions for priority
substances

Annexes; details on methods used to
calculate risk etc

Links between RBMP/FRM and fisheries management plans



The river basin management plan for the
Scotland river basin district 2009–2015
Summary

Flood Risk Management
(Scotland) Act 2009:
Delivering Sustainable Flood Risk
Management

FLOOD
AREA

A photograph of a river flowing through a green landscape with a forested hillside in the background. The text "Fisheries Management Plan" is overlaid in white.

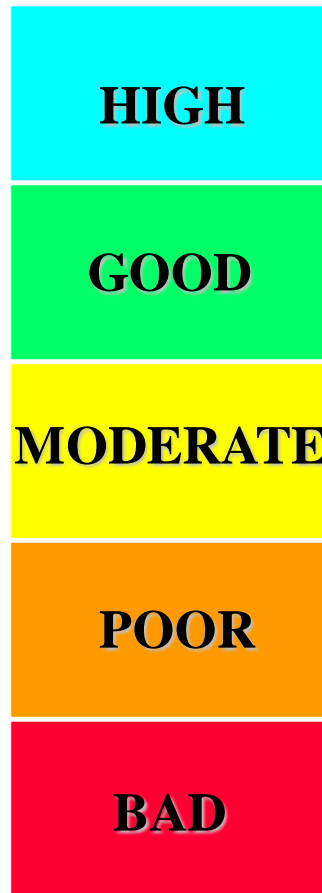
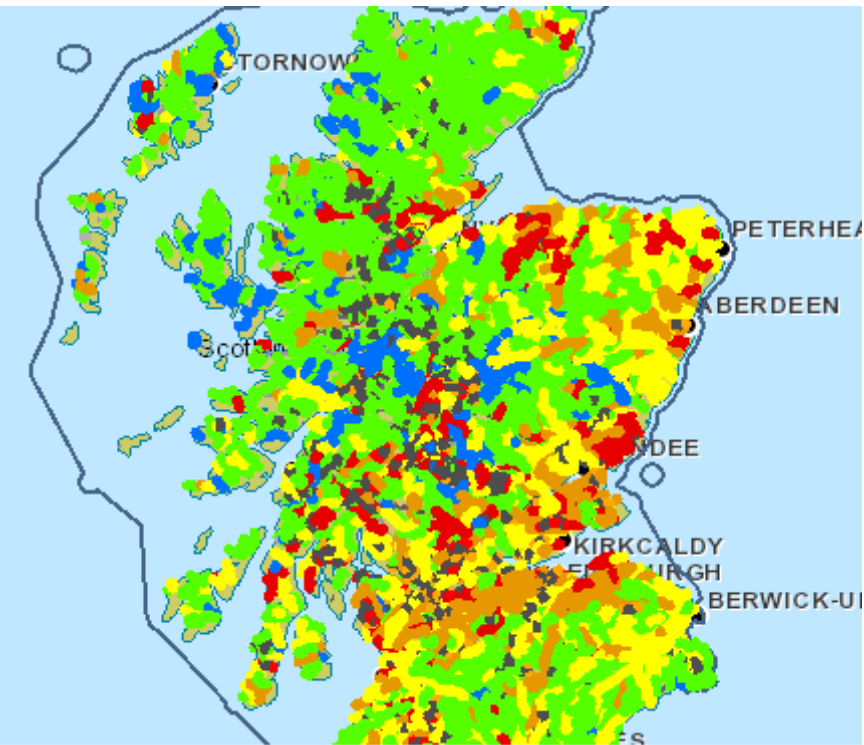
**Fisheries
Management
Plan**

Species and habitat management

- Natural flood management
- Improving the physical conditions of water environment
- Mitigation of fish barriers
- Promoting water quality
- Management of INNS
- ...



Using WFD & FRM Data



New
Risk Assessment
published in
Dec 2013

FRM data
available
on
website

Where to find the latest classification

Home News Publications Consultations Application forms Vacancies

About us You are here: Scottish Environment Protectio > Water > Monitoring and classification > Classification > Cl

Classification results

SEPA produces an annual classification for all the water bodies in Scotland; this is used for:

- Regulatory decisions;
- Targeting action to improve the environment;
- Tracking progress with SEPA and Scottish Government objectives;
- Informing the public and partners on the state of the environment.

The classification is produced using samples from a range of years, ending in December of the classific samples are analysed, the data checked, and the classification results calculated, checked and publish the following year.

To download a file with all the results for each water category, click on the links below.

Note, the river files are particularly large

River	Loch	Estuaries	Coastal	Groundwater
2007	2007	2007	2007	2007
2008	2008	2008	2008	2008
2009	2009	2009	2009	2009
2010	2010	2010	2010	2010
2011	2011	2011	2011	2011

The information gathered from monitoring and classification is available on SEPA's interactive mapping

- Water
 - >> Bathing waters
 - >> Diffuse pollution
 - >> Hydropower
 - >> Marine Science
 - >> Monitoring and classification
 - Monitoring
 - Classification
 - How does classification work?
 - **Classification results**
 - Long term water quality
 - Previous classification

Where to find RBMP information

Home	News	Publications	Consultations	Application forms	Vacancies
------	------	--------------	---------------	-------------------	-----------

- About us
- Air
- Climate change
- Flooding
- Land
- Planning
- Radioactive substances
- Waste
- Water**
- » Bathing waters
- » Diffuse pollution
- » Hydropower
- » Marine Science
- » Monitoring and classification
- » Protected areas
- » **Water environment fund**
- » **River basin planning**
- Scotland
- Solway Tweed
- National Advisory Group
- Area Advisory Groups

You are here: [Scottish Environment Protection Agency](#) > [Water](#) > [River basin planning](#)

River basin planning

Delivering the first river basin management plans

Interim reports describing progress in the implementation of the planned programme of measures for the first river basin management plans are now available.

- [Solway Tweed measures report](#)
- [Scotland measures report](#)

These summary reports, for both the Scotland and Solway Tweed river basin districts, are based on information submitted to the Commission by SEPA and the Environment Agency. They outline the work currently underway to meet targets set to improve the water environment by 2015.

The measures consist of a combination of regulatory measures, individual initiatives and multi benefit delivery through partnership working.

It is recognised that improvement in condition may take time to manifest itself. The current condition of the water environment in relation to its target condition will be assessed and published at the end of 2013 in the 'Current Condition and Challenges for the Future' report.

Maintained momentum and action are required as we move towards the second cycle of river basin planning (2015-2021). In particular, increased effort and resource is required to progress measures needed to improve the physical characteristics of our water environments and work to tackle most diffi-

Related Items

[Interactive map application](#)

[Interactive map application - Help page](#)

[RBMP data download](#)

[Water Environment Fund](#)

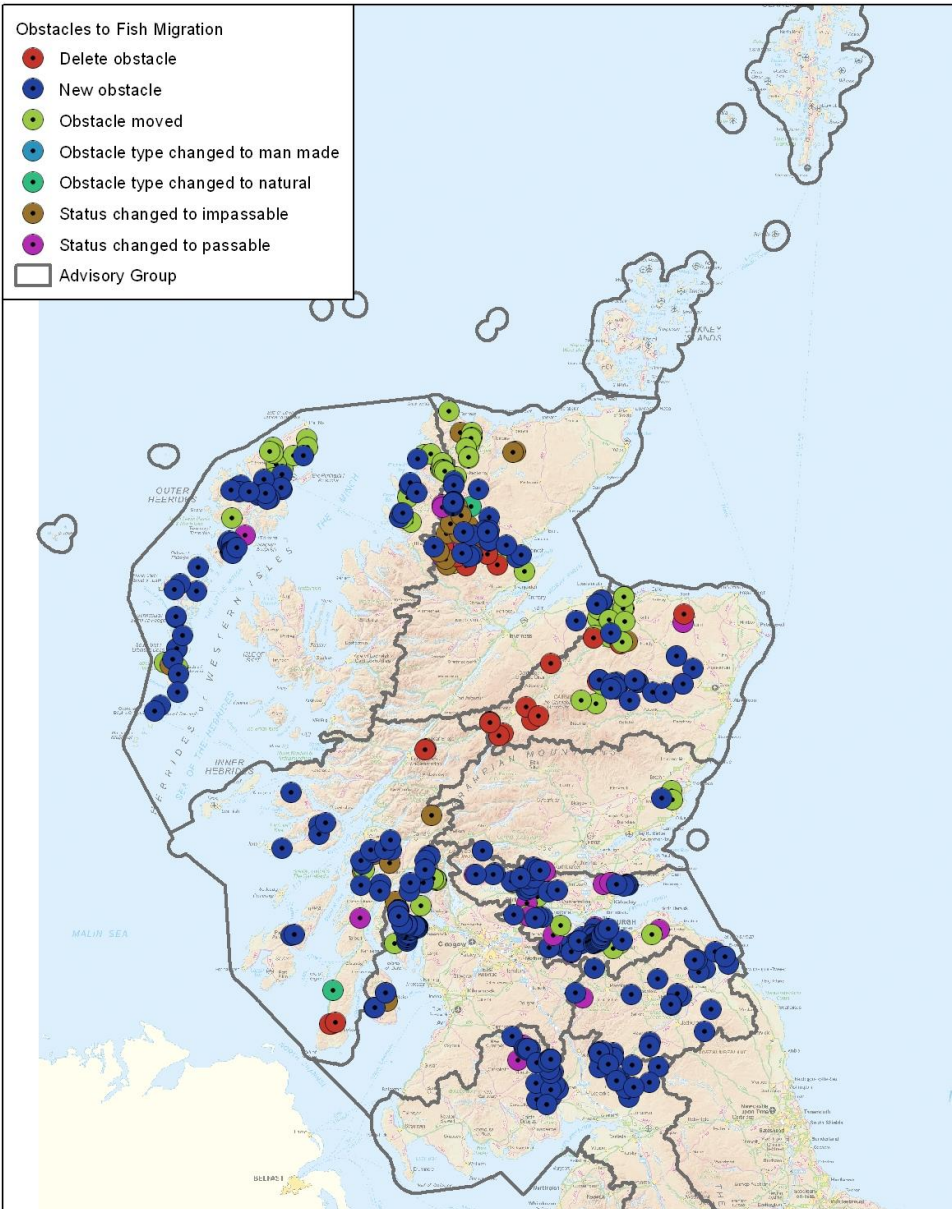
[Your questions answered leaflet \(551k\)](#)

[Early basin planning work](#)

Exchange of data

Obstacles to Fish Migration

- Delete obstacle
- New obstacle
- Obstacle moved
- Obstacle type changed to man made
- Obstacle type changed to natural
- Status changed to impassable
- Status changed to passable
- Advisory Group



Edits to Obstacles to Fish
Migration Dataset
Winter 2010/2011



© 2010 Scottish Environment Protection Agency. Some features of this map are based on digital spatial data licensed from the Centre for Ecology and Hydrology. © CEH. Includes material based upon Ordnance Survey mapping with permission of H.M. Stationery Office. © Crown Copyright. Licence number 100016991. Helpdesk ref: N/A. Produced: 8/3/2011

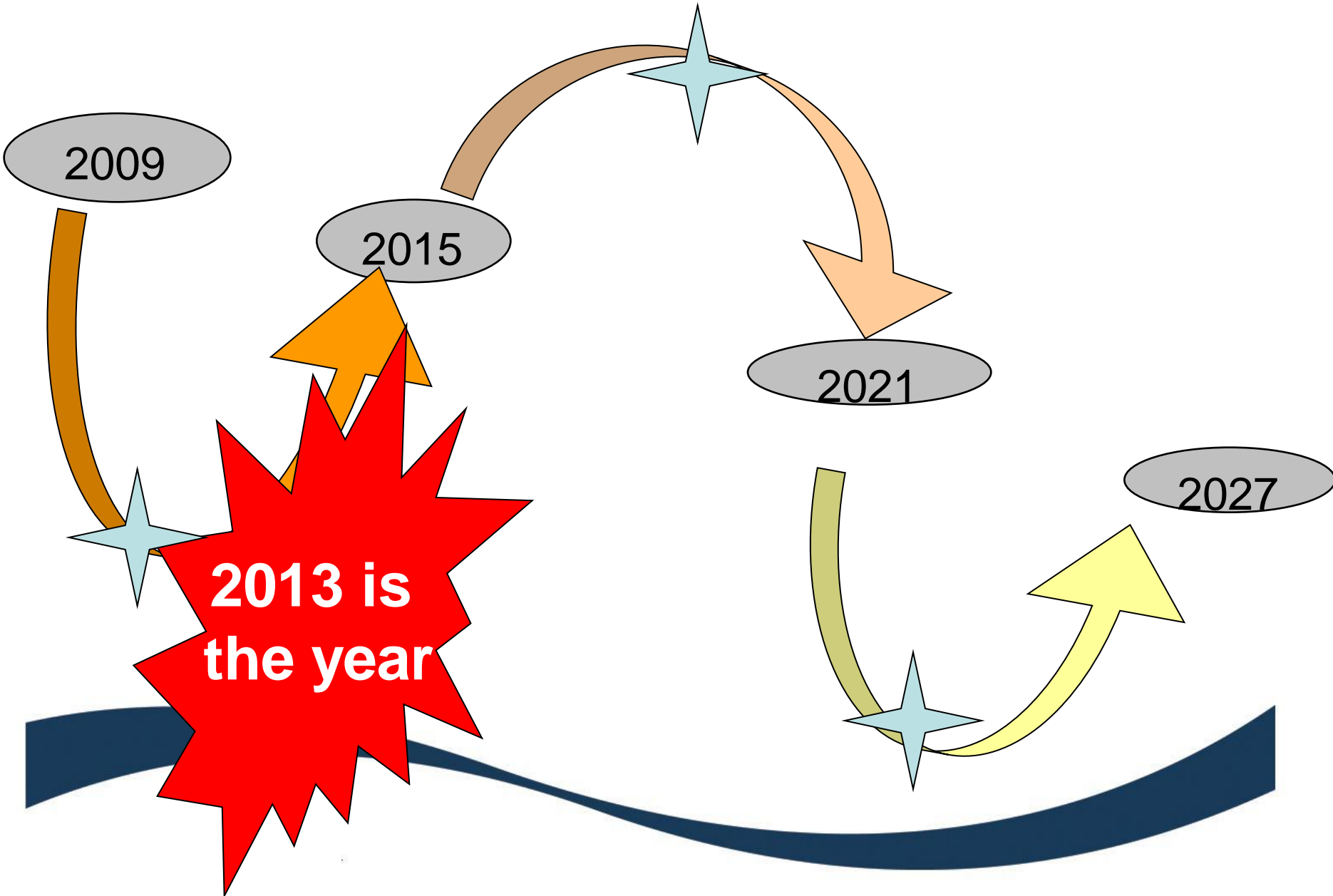
2013 is
the year

Projects

- **Ensure links with RBMP & FRM objectives**
- **Partnership working through AAG and LAG**



The RBMP cycles: prioritisation



When updating your fisheries management plan....



**2013 is
the year**



Think RBMP



Think FRM



- **Julie Bhatti- Argyll and Lochaber coordinator**
- **Eilidh Johnston- North east, Shetland and Orkney coordinator**
- **Morgane Gillet – West highland and North Highland Coordinator**



What about your plan?

