

RBMP update – Implementing the first plans



- **Regulatory work – CAR reviews**
- **Restoration plan – now published**
- **Invasive non native species plan - coming shortly**
- **Water Environment Fund Unit**
- **Tayside Lochs / Lintrathan**
- **Priority catchment work**

Tay priority catchment

Farm visits

2013 = 80 farm visits

Water body	Notes
East Pow and trib of East Pow	Visits complete Free soil testing and nutrient budgeting to be completed
Cambusmichael Burn	1 farm remaining
St Martins Burn	2 farms remaining
Ordie Burn	Majority completed end September
Shochie Burn	Scheduled for October
Coupar/Kinnochtry	Visits expected to be scheduled over Autumn/Winter period
Burrelton	
Meikle	
Kerbet etc	

Awareness raising

South Esk priority catchment

- **170 farms visited initially**
- **~100 identified as needing revisits**
- **70 revisits completed to date**
- **Good progress - 50% reduction GBR breaches**
- **Difficult conditions - exceptional rainfall events gave rise to very significant soil erosion in some places**

Before and after...



Before and after...



Before and after ...





06/02/2013



Pilot catchments - overview



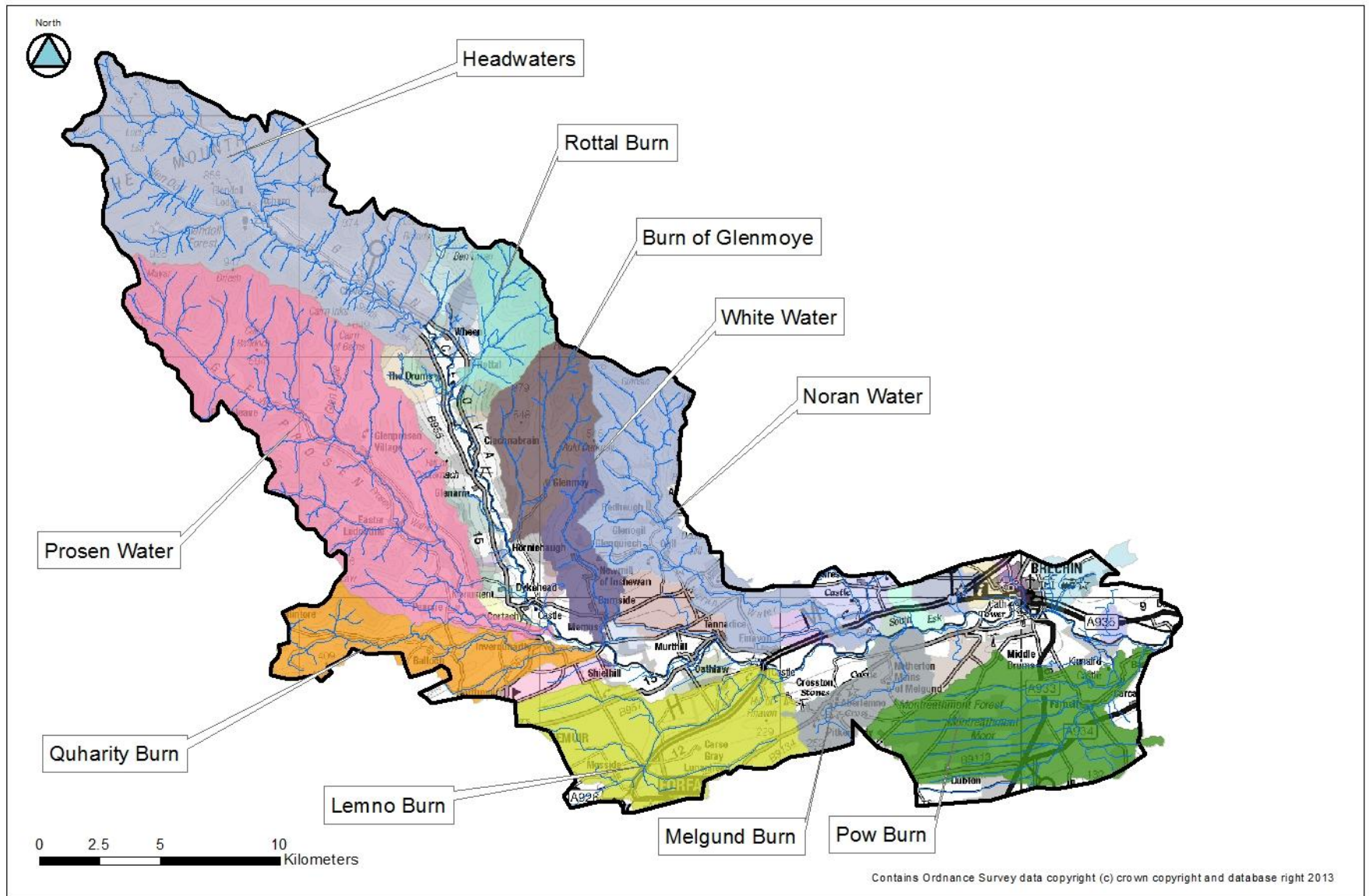
- Morphology/natural flood management AND multiple benefits
- River Dee, River South Esk, River Nith, Glazert Water
- 3 phases:
 1. Scoping opportunities (March-October 2013)
 2. Land manager engagement/detailed design
(October 2013 – March 2015)
 3. Implementation
(April 2015 – March 2016)

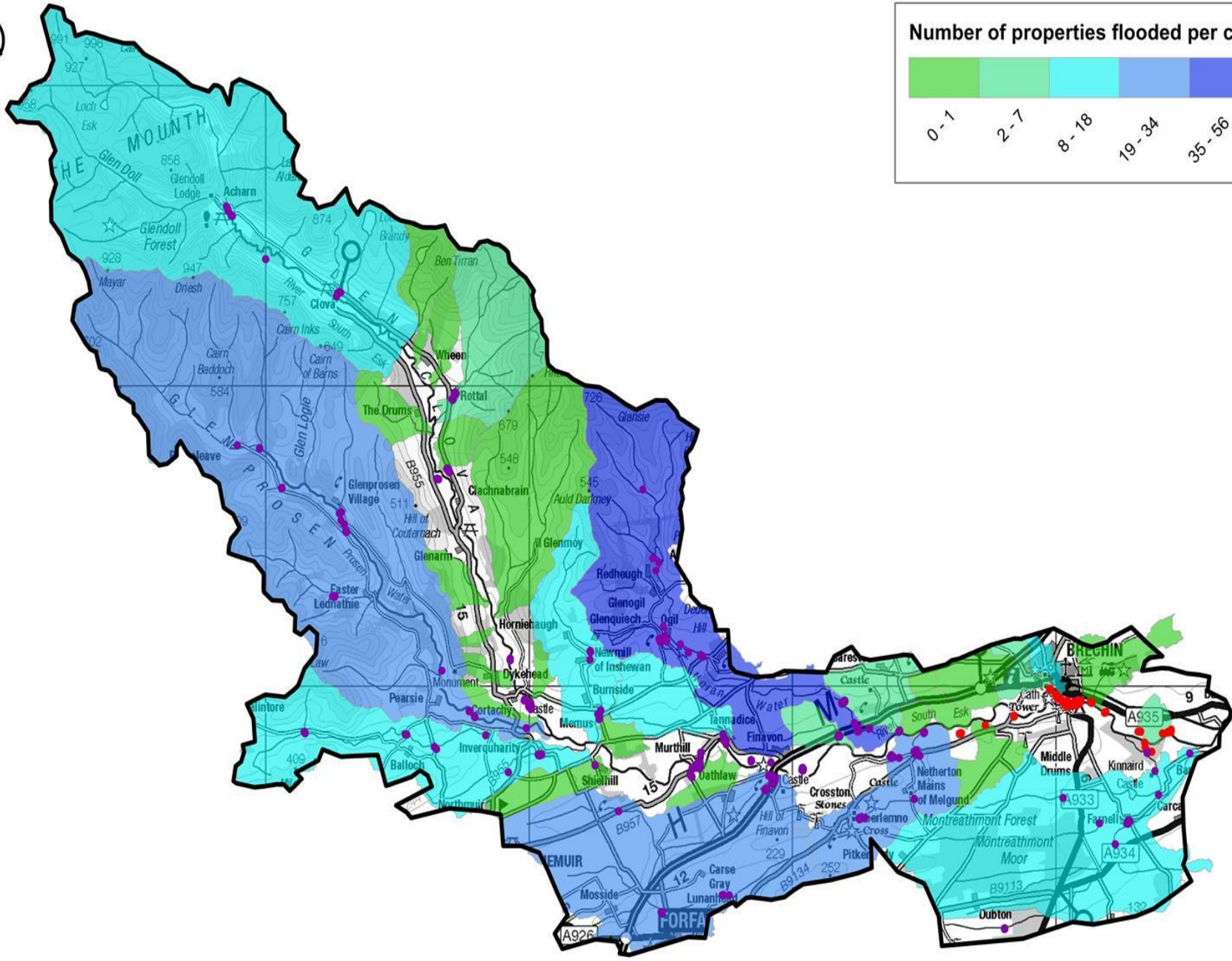
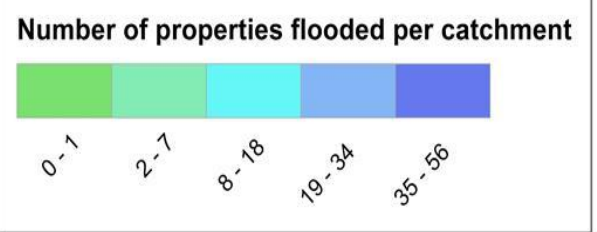
Further information

http://www.sepa.org.uk/water/river_basin_planning/implementing_rbmp.aspx

What we'll get from phase 1

- **Catchment characterisation - hydrological and geomorphological (desk and field based)**
- **Identified restoration reaches/options which deliver for RBMP, NFM, or both**
- **New targeted approach to prioritise**
- **Prioritised list of options**
- **Stakeholder engagement**
- **Expert judgement – final list**







Legend

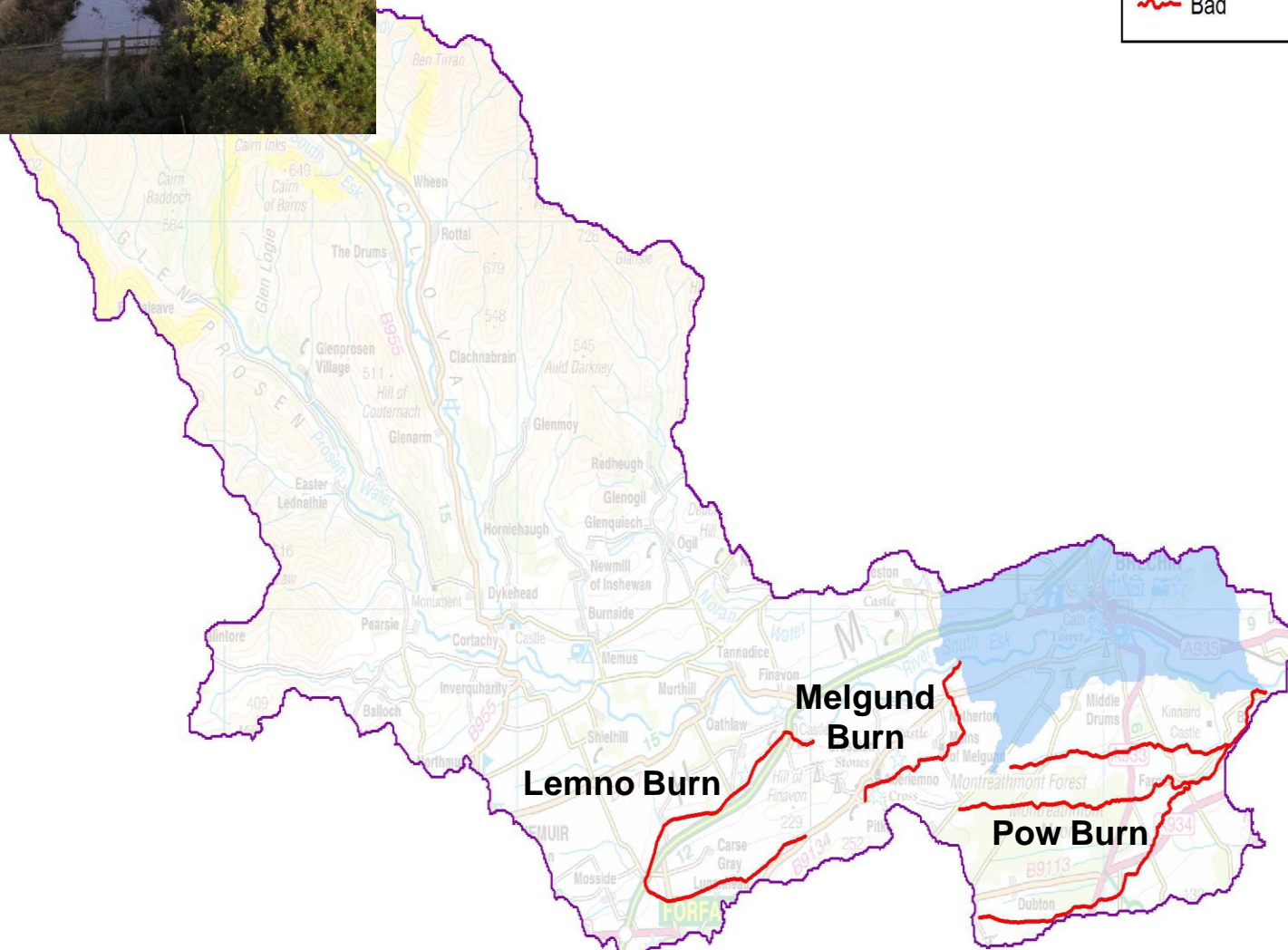
 Potential Vulnerable Areas

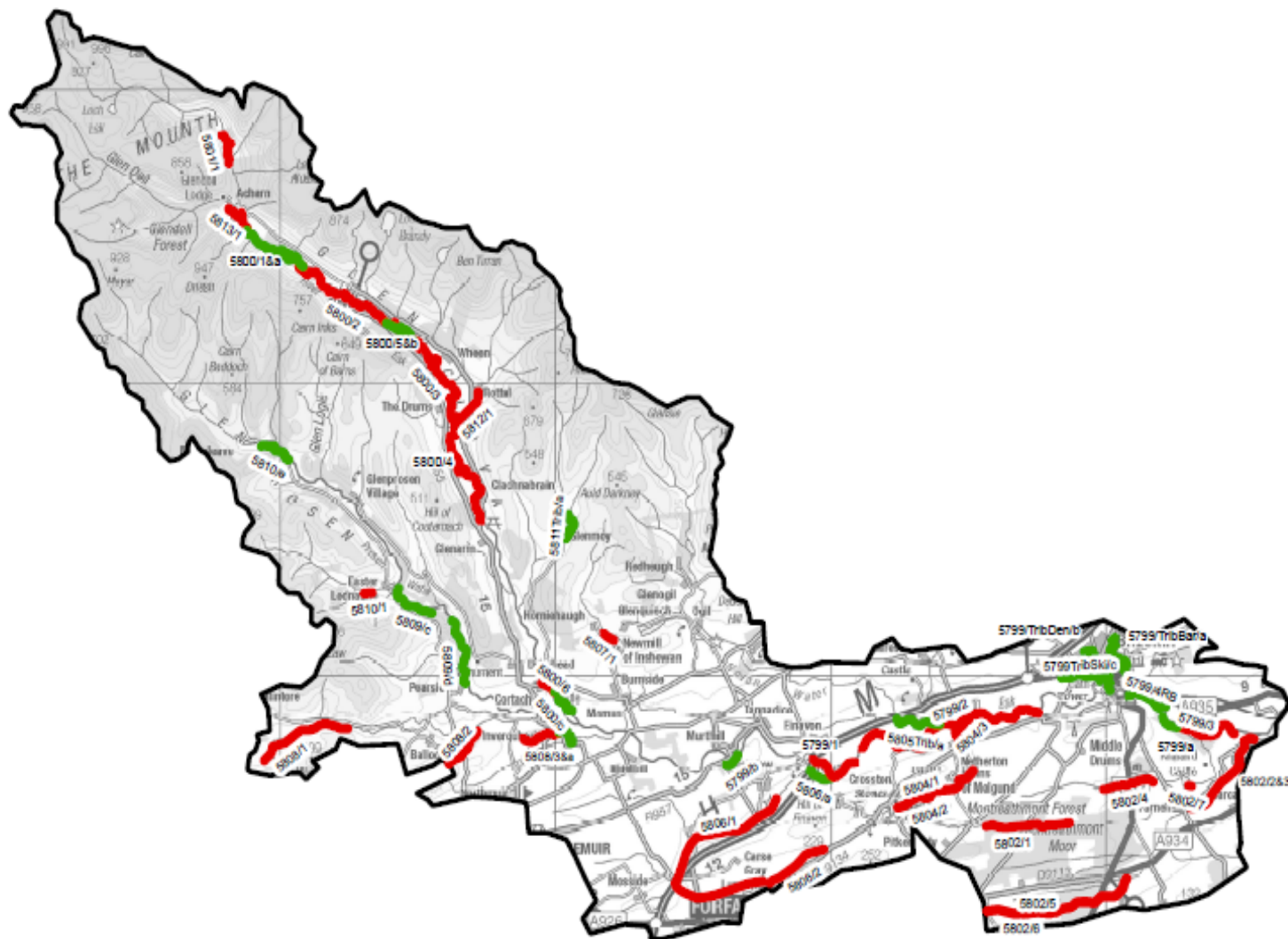
Morphology (2011 classification)

 Moderate

 Poor

 Bad





Potential reaches

Sniffer restoration reaches



ALL POTENTIAL REACHES FOR
RESTORATION

River South Esk
upstream of
Gella Bridge
gauging station

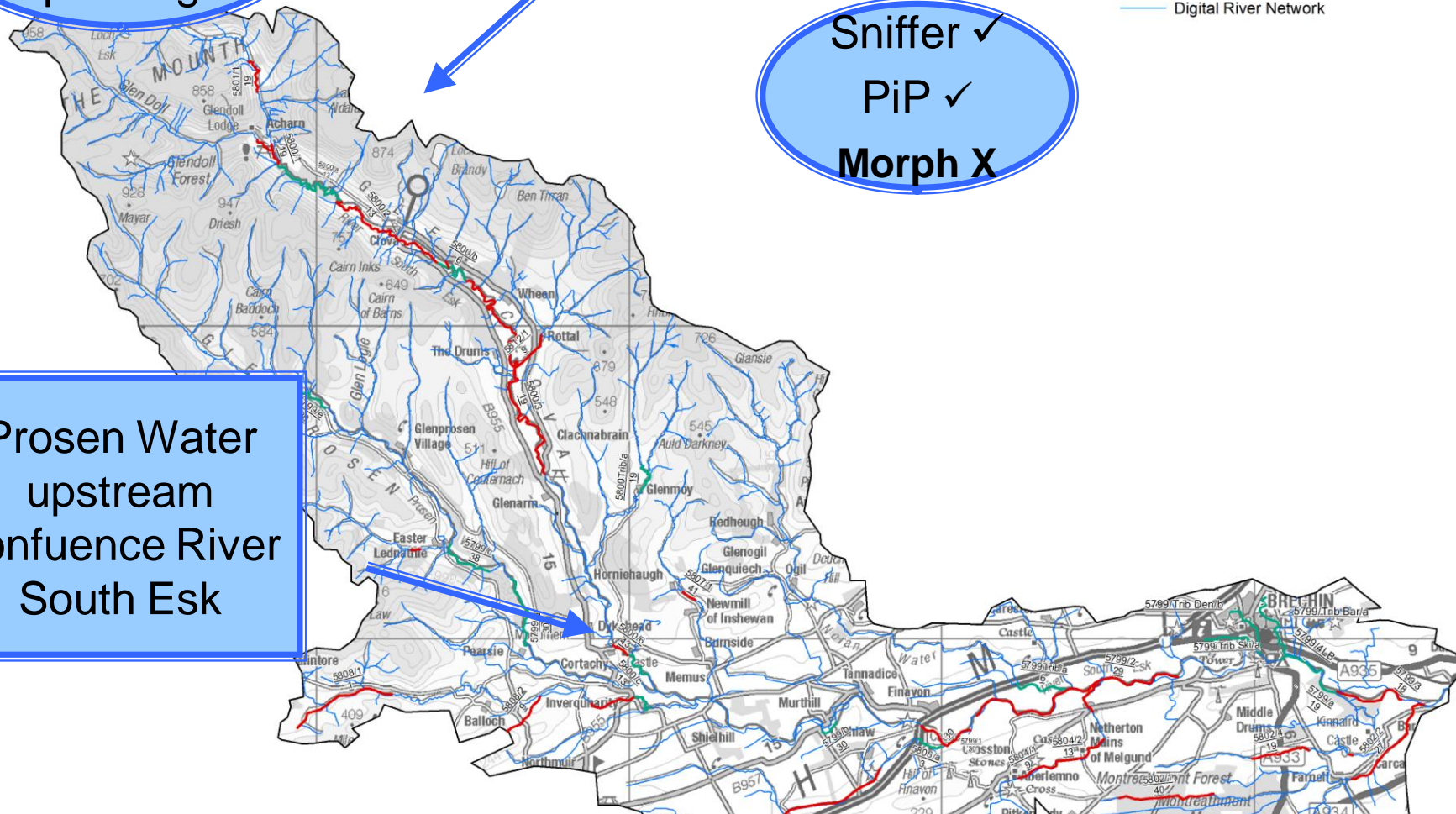
Riparian
improvement
& flood plain
planting

Sniffer ✓
PiP ✓
Morph X

Prosen Water
upstream
confluence River
South Esk

Legend

- Sniffer Restoration Reaches
- Additional Pilot Study Restoration Reaches
- Digital River Network



- **Consider prioritised lists: internally/externally**
- **Vital to link with existing initiatives: Sniffer / Pearls in Peril / priority catchment work / proposed forestry planting work in Glen Clova**
- **Consider HMWB/GEP requirements**
- **Agree options to progress**
- **Align land manager engagement with existing initiatives**