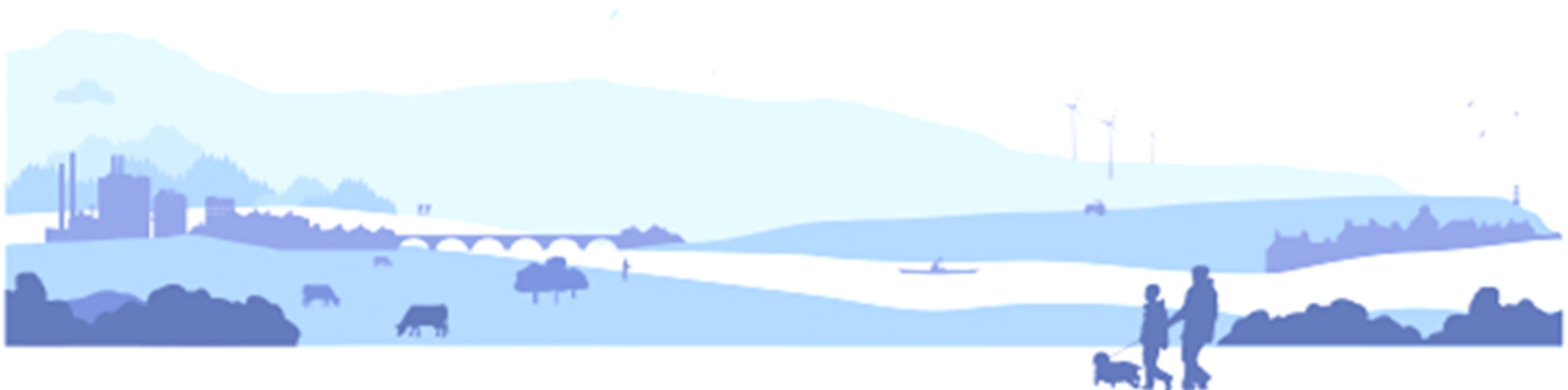


26 September 2014

Improving the physical condition of the water environment

David Harley
Water & Land Manager



What do we mean by Physical Condition?

Realignment



Embankments



**Urban pressures:
bank protection,
bed protection,
culvert**



Bank protection



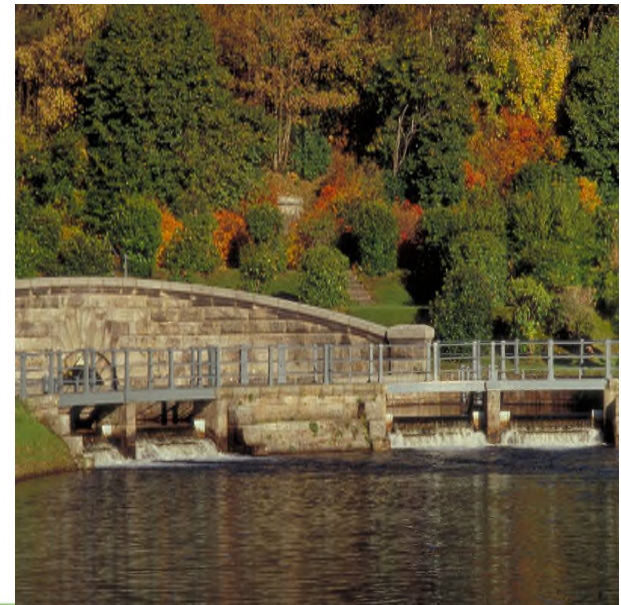
First cycle approach to improving physical condition

- Opportunistic 
- Supplementary plan
- Pilot catchment project



Step change needed

- More strategic & planned approach
- Scenarios for different levels of ambition



Physical condition of bed and banks

Baseline scenario	<ul style="list-style-type: none">• No step change in approach• 80% water bodies impacted by morphology		
Period	2 nd cycle	3 rd cycle	Post 2027
No. water bodies targeted for physical condition restoration	24	37	240

Physical condition of bed and banks

Proposed Step change 1 scenario

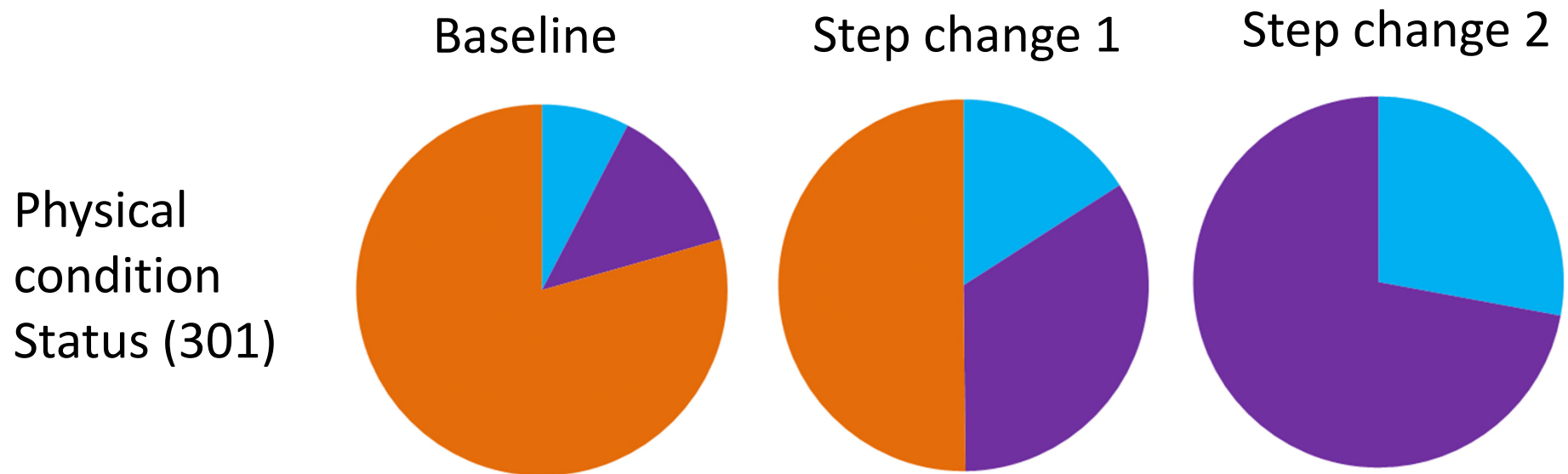
- Improve delivery framework & increased capacity
- 50% of affected water bodies left until post 2027

	2 nd cycle	3 rd cycle	Post 2027
No. water bodies targeted for physical condition restoration	48	102	151

Proposed Step change 2 scenario

- Improve delivery framework & increase capacity
- Maximises no. water bodies reaching good by 2027
- High risk of non-delivery due to administrative challenge of managing very large work programme

	2 nd cycle	3 rd cycle	Post 2027
No. water bodies targeted for physical condition restoration	84	217	n/a



Good by 2021

Good by 2027

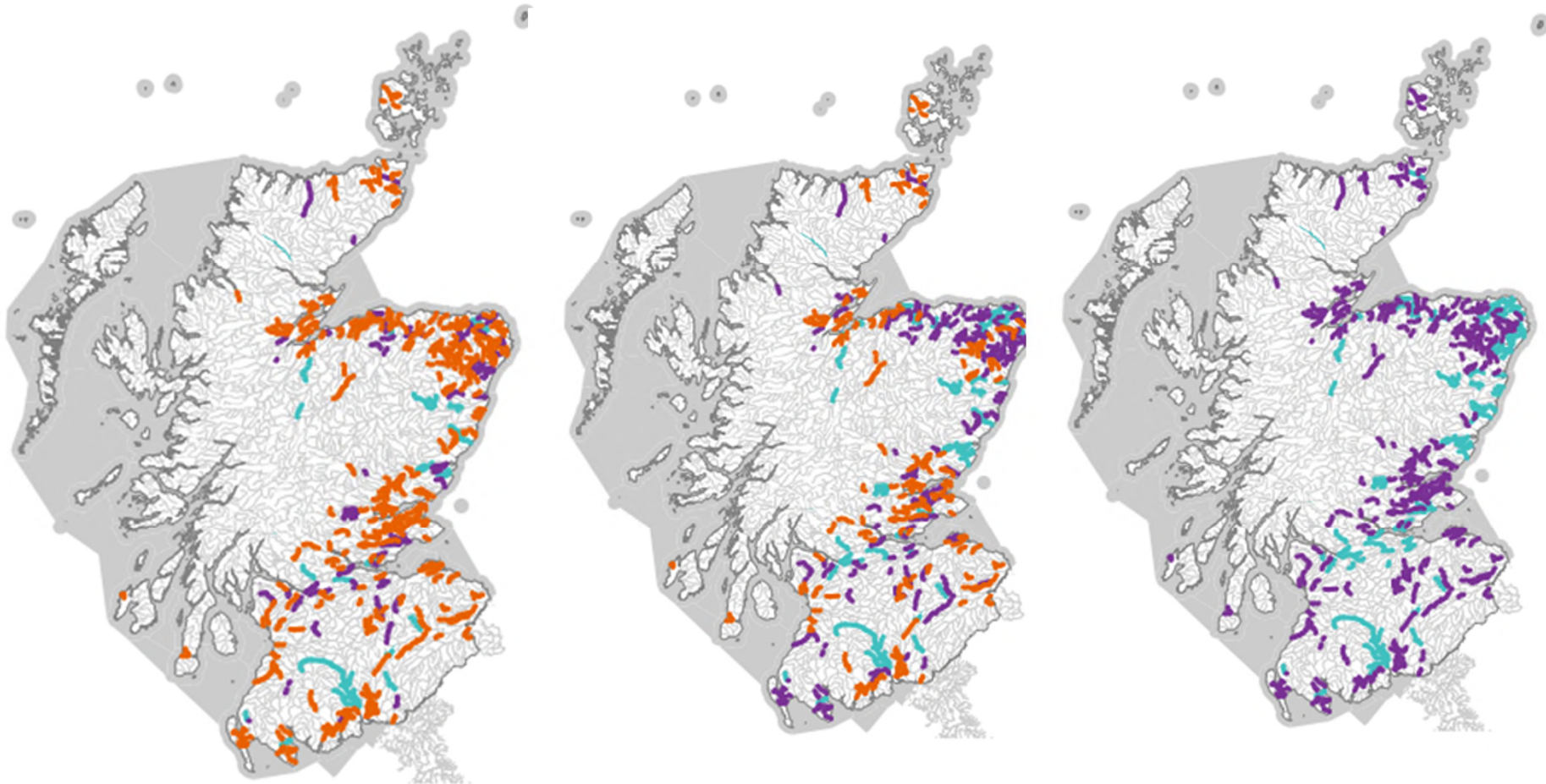
Less stringent objective

**Physical
condition
Status (301)**

Baseline

Step change 1

Step change 2



Good by 2021

Good by 2027

Less stringent objective

Aim of engagement during consultation

- Priority areas for others
- Potential for multiple benefits
- Potential partners



Physical condition of bed and banks

- Route map to where effort should be focused - iterative (informed by pilot catchments)
- May change following 2nd cycle programme of investigations & scoping studies
- Parallel Government consultation on improved delivery framework
- Successful delivery will require all parties to play their part, not least land managers