

RAFTS Barrier Prioritisation Programme, the Water Environment Fund and River Basin Management Planning

Rob Mitchell: rob@rafts.org.uk

Fish & Fisheries Advisory Group
Perth
30/10/2013

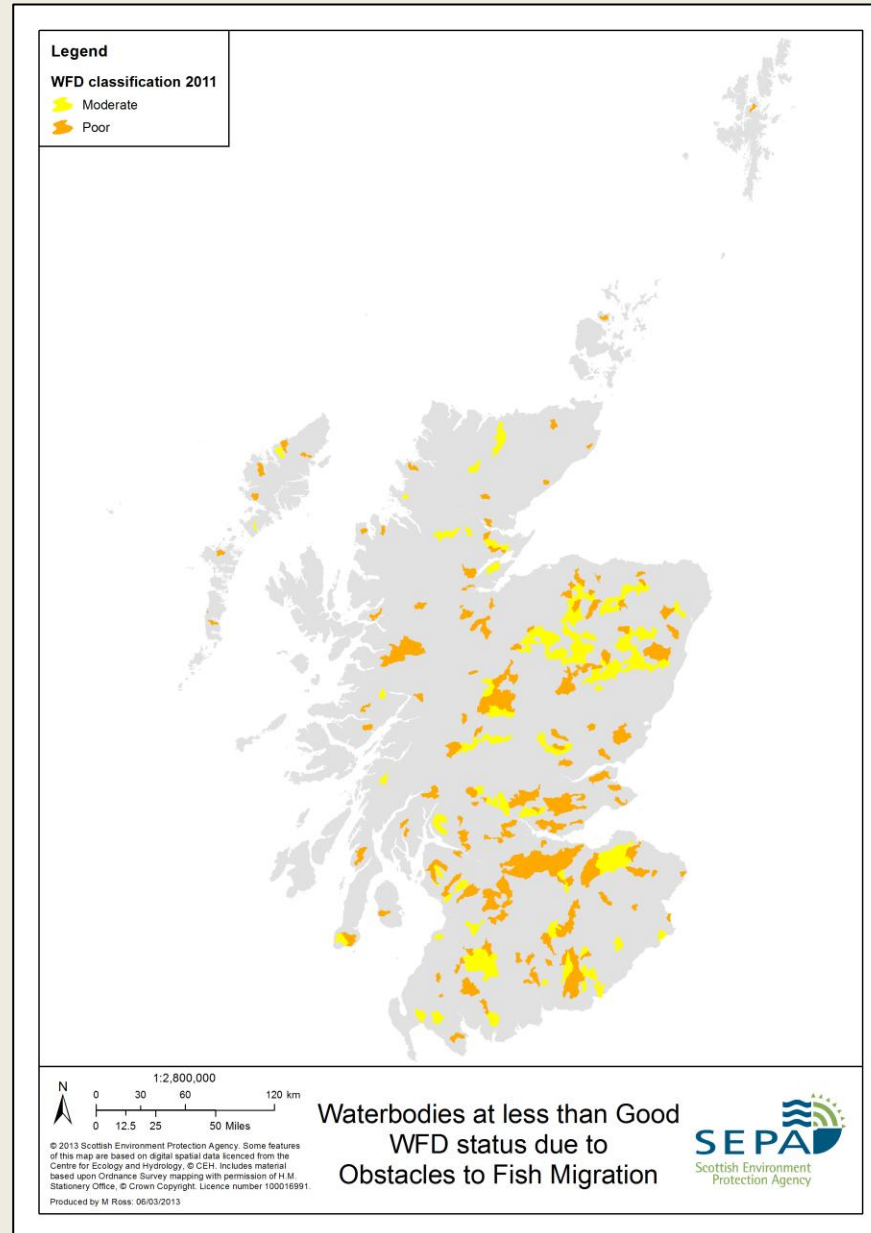
What is the problem?

- Legacy of the Industrial Revolution – ‘abandoned’ weirs
- SEPA estimates 1800 unlicensed dams/weirs in Scotland
- Barriers to upstream/downstream migration of salmonids and other species
- Limits river connectivity and reduces habitat corridor linkage.



Impact on WFD Classification

Map illustrating the effect
of barriers on WFD
Classification
(SEPA)



Scale of the problem: need to prioritise

Map showing
SEPA barriers
data for Ayrshire
Rivers Trust



Aims of the Programme

- RAFTS/SEPA/Trusts to identify most important barriers/barrier combinations.
- Maximise improvements to WFD classification.
- Feed into development stage for second River Basin Management Plans.
- Ultimately, deliver a prioritised barrier assessment, easement and removal programme making best use of resources and organisational expertise.

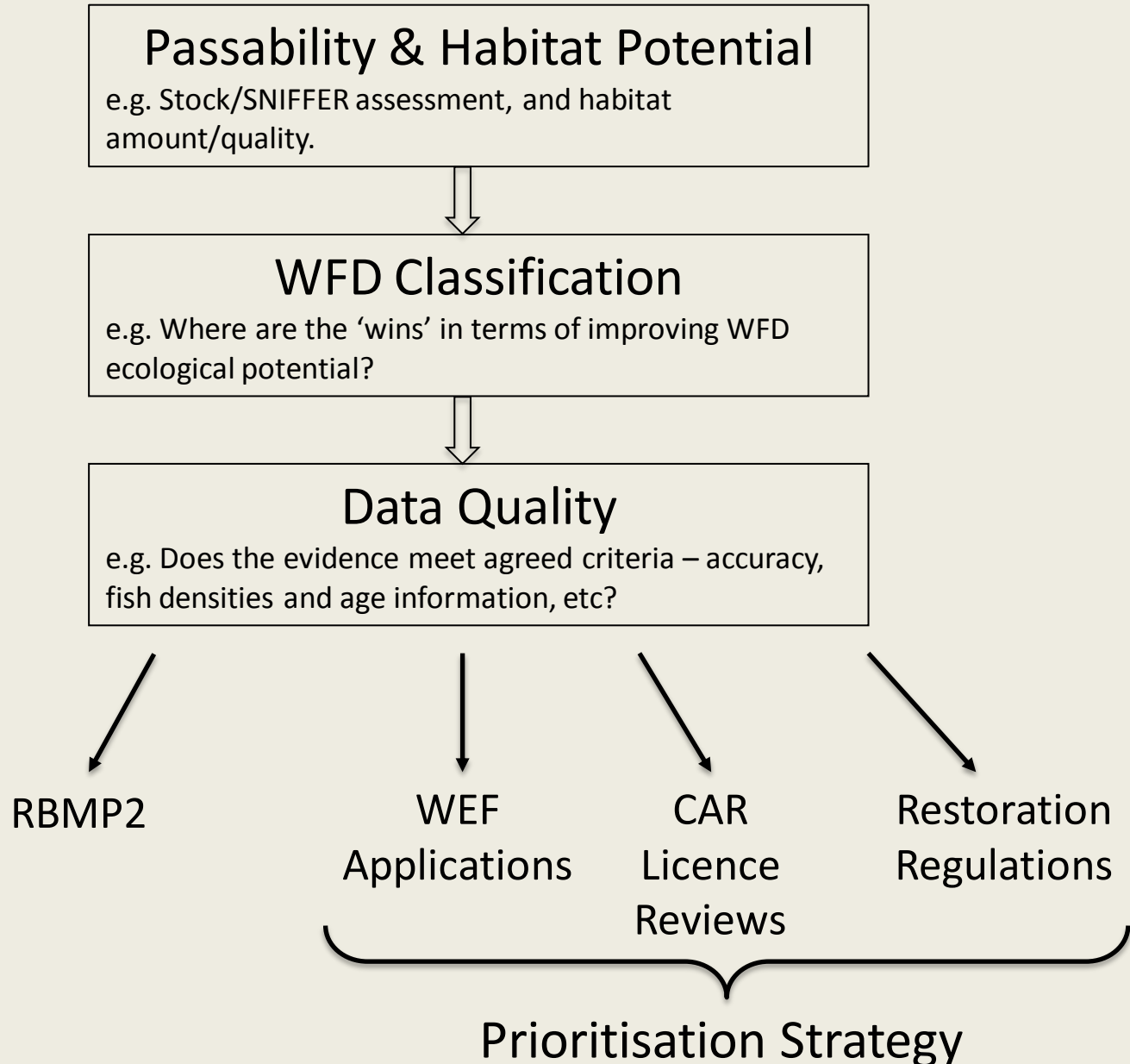


RBMP Objective Setting

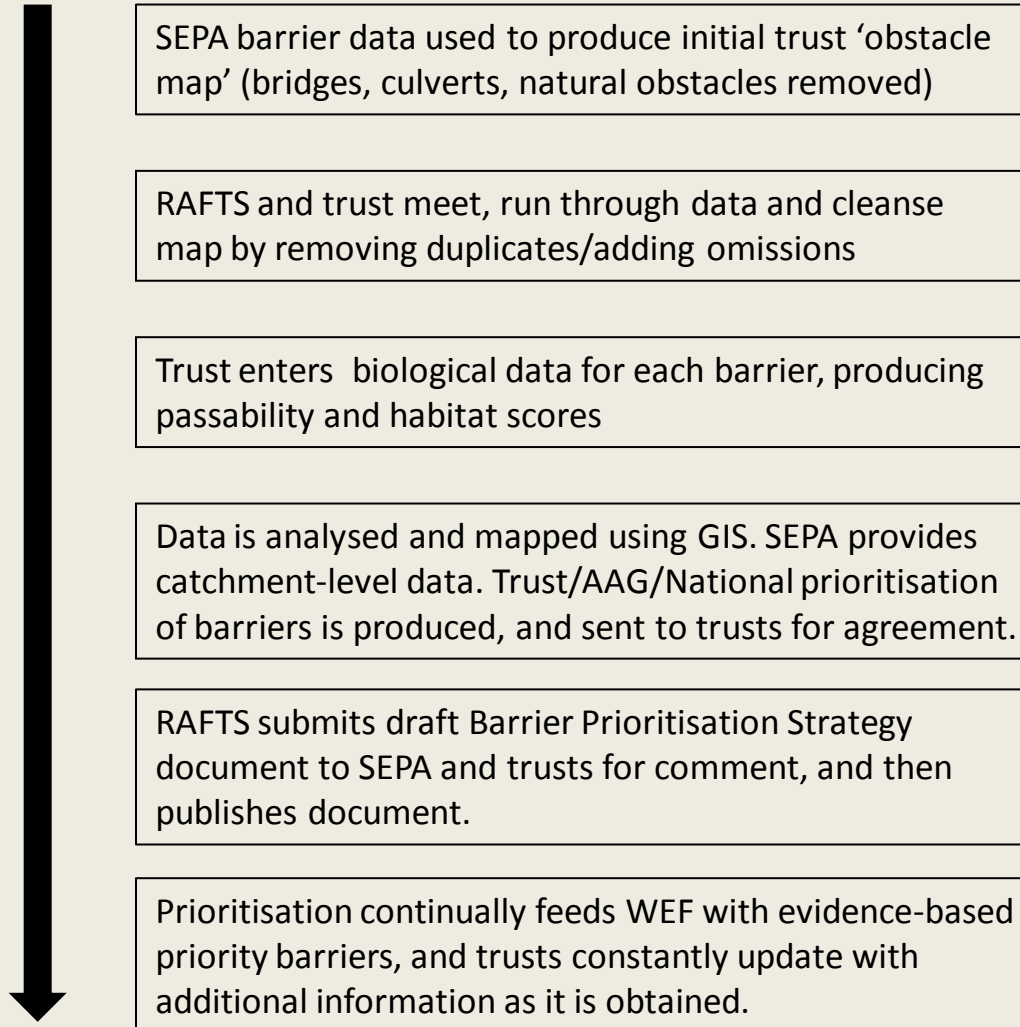
The RBMP Restoration Plan states that prioritisation is taking account of the:

- improvement in ecological status of water bodies which would be achieved if the barrier was addressed;*
- area of habitat which would become accessible;*
- quality of that habitat for fish production;*
- likely importance of the fish population concerned in environmental, social and economic terms;*
- potential multiple benefits associated with the overall improvement in ecological status, including recreation, sport and amenity.*

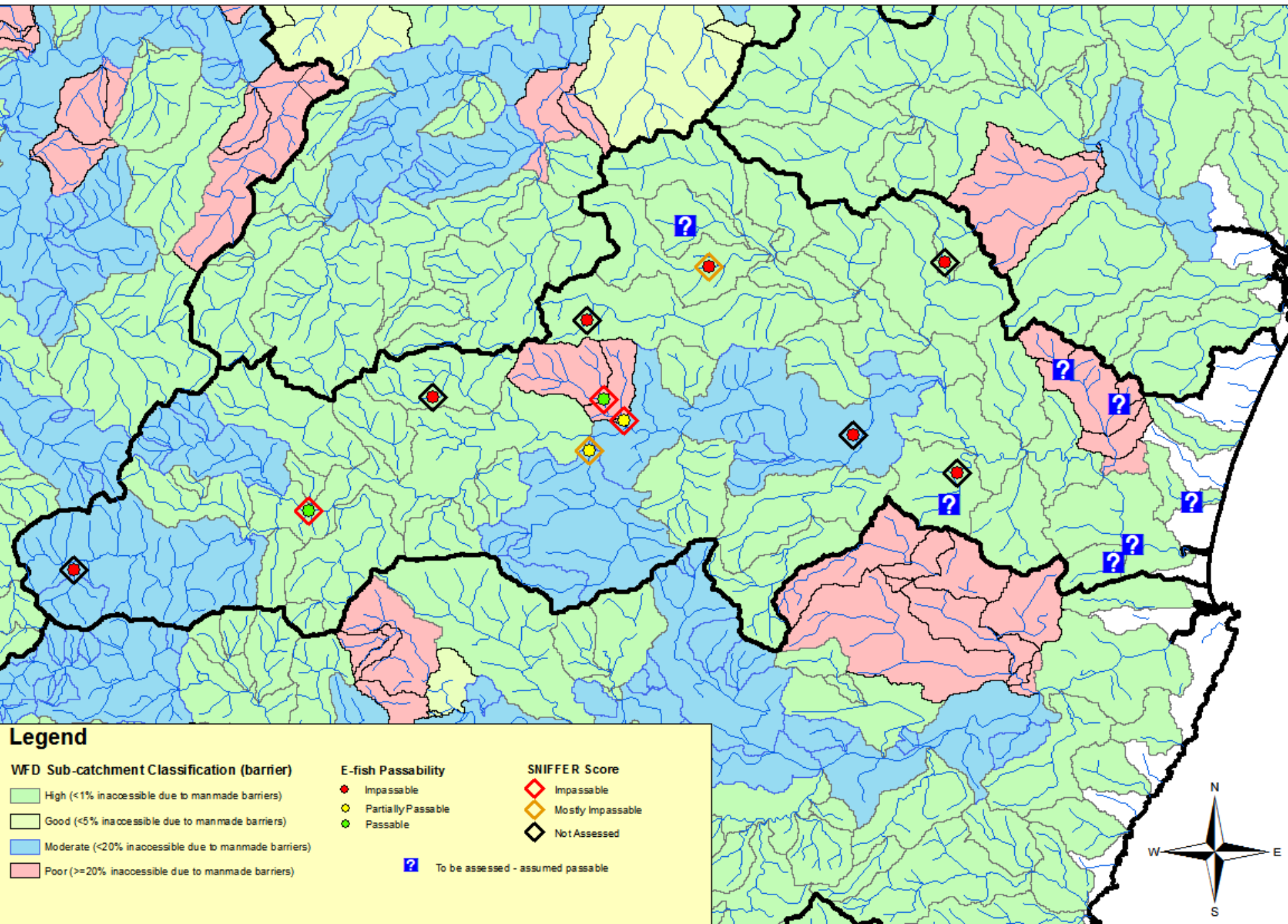
Prioritisation Steps



Prioritisation Process Flow



River Don Trust Priority Barrier Map



Legend

WFD Sub-catchment Classification (barrier)

- High (<1% inaccessible due to manmade barriers)
- Good (<5% inaccessible due to manmade barriers)
- Moderate (<20% inaccessible due to manmade barriers)
- Poor (>=20% inaccessible due to manmade barriers)

E-fish Passability

- Impassable
- Partially Passable
- Passable

SNIFFER Score

- Impassable
- Mostly Impassable
- Not Assessed

? To be assessed - assumed passable



Next Steps

- 3rd October – RAFTS completed project roll-out across Scotland.
- At present - Results being analysed and validated by trusts.
- November - SEPA analyses top priority data in GIS layer form and provides 'affected catchment area' data by barrier.
- End of 2013 - draft Barrier Prioritisation Strategy Document (incorporating methodology and all priority site results) distributed for comment. Final version in early 2014.
- Most importantly, move away from process to practicality.....

Challenges

- RAFTS and Trusts – maintain a throughput of applications to the SEPA Water Environment Fund.
- RAFTS and SEPA – work closely to harmonise the process with CAR licence reviews and vice versa.
- RAFTS and Trusts – prioritise barriers ineligible for WEF or outside the scope of CAR: restoration regulations?
- Combine all of the above to assess, ease and/or remove the most important barriers in an ongoing programme delivering maximum environmental benefit in cost effective manner.

Questions/Discussion